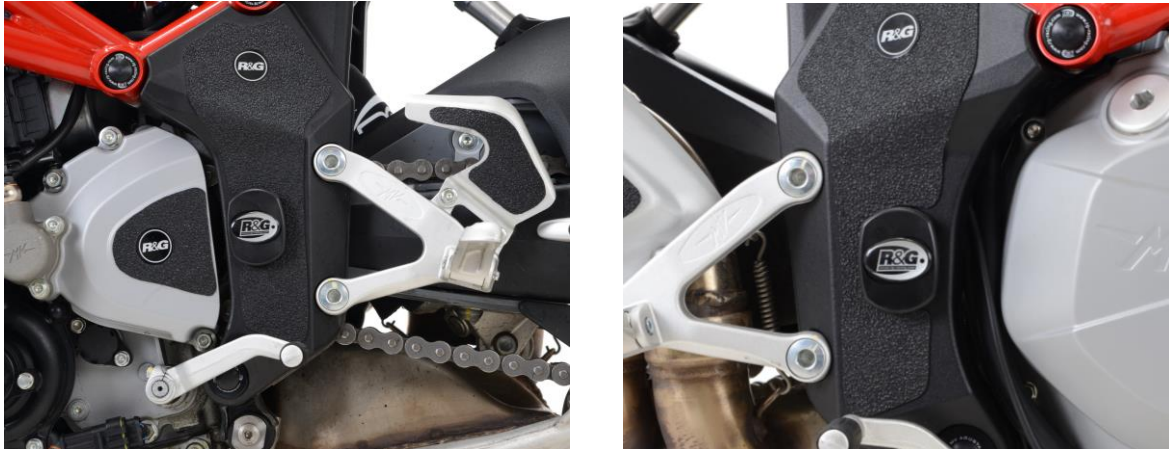




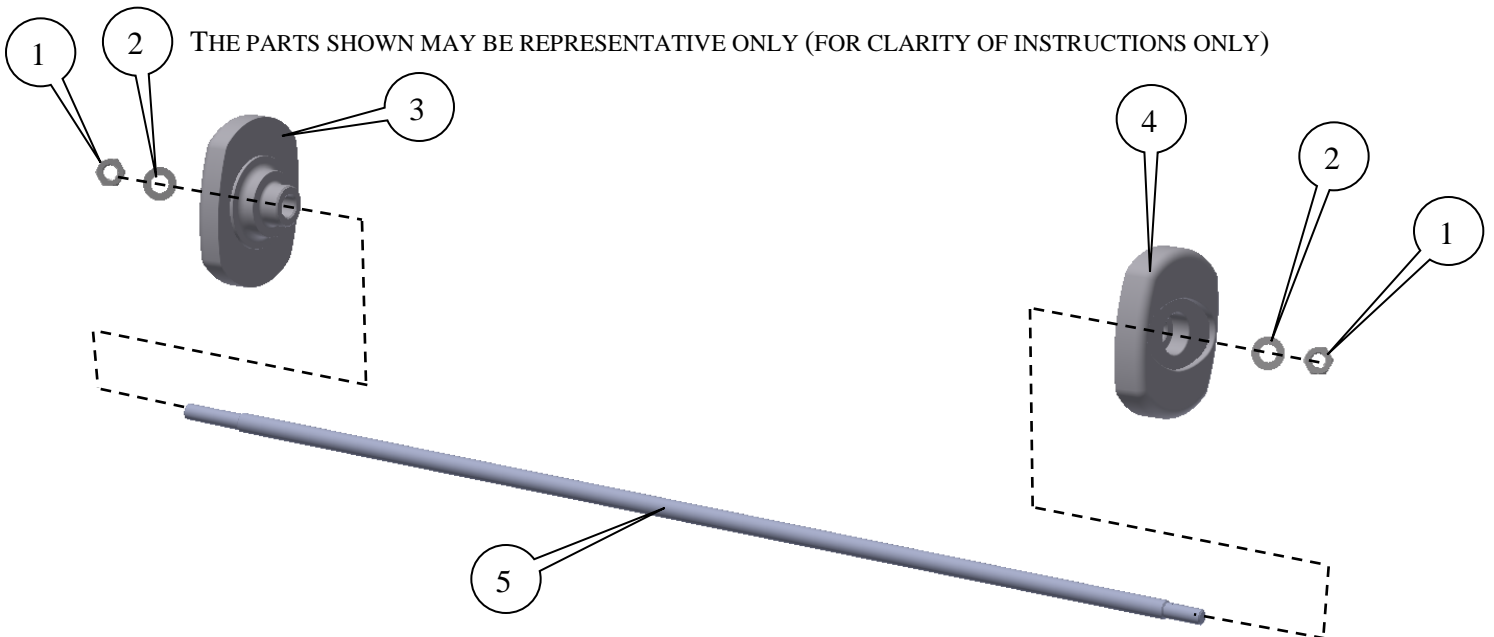
FITTING INSTRUCTIONS FOR FI0123 FRAME INSERTS
MV AGUSTA BRUTALE 1090 2013-



THIS KIT CONTAINS THE ITEMS PICTURED AND LABELLED BELOW.
DO NOT PROCEED UNTIL YOU ARE SURE ALL PARTS ARE PRESENT.

Please note that the way the kit is packed does not necessarily represent the way of mounting to the bike

Please note that in cases where kits are packed with a plastic tube separating components on the spindle bar (this tube should be discarded).





LEGEND

ITEM 1 = M5 NYLOC NUTS (x2).

ITEM 2 = M5 WASHERS (x2).

ITEM 3 = FRAME INSERT (LEFT HAND SIDE=B0517) (x1).

ITEM 4 = FRAME INSERT (RIGHT HAND SIDE=B0518) (x1).

ITEM 5 = SPINDLE BAR (SB0116=339mm LONG) (x1).

TOOLS REQUIRED

- Socket set to include 2x 8mm sockets and wrenches

FITTING INSTRUCTIONS

- Fit one nut and washer (items 1 and 2) onto the spindle bar (item 5) and engage one nut so the plastic insert of the nut is fully engaged.
- Feed the spindle bar with the nut and washer fitted through the thicker frame insert (item 3=B0517) so the nut and washer go into the counter bore of the frame insert.
- Feed this assembly through the frame/swingarm pivot from the left hand side of bike.
- Place the remaining thinner frame insert (item 4=B0518) over the exposed end of the spindle bar on the other side of the bike.
- Fit the remaining washer and nut from the kit onto the exposed thread and tighten until both nuts are engaged in the nylon and equal amounts protrude from either side. *Do not overtighten – the nyloc nuts will hold it tight.*
- Fit the bubble stickers into the recess on both frame inserts.

ISSUE 1 21/04/2016 (NSY)

CONSUMER NOTICE

The catalogue description and any exhibition of samples are only broad indications of the Products and R&G may make design changes which do not diminish their performance or visual appeal and supplying them in such state shall conform to the order. The Buyer acknowledges no representation or warranty (other than as to title) has been given or will apply to the Products other than those in R&G's order or confirmation and the Buyer confirms it has chosen the Products as being of merchantable quality and suitable for its particular purposes. Where R&G fits the Products or undertakes other services it shall exercise reasonable skill and care and rectify any fault free of charge unless the workmanship has been disturbed. The Buyer is responsible for ensuring that the warranty on the motorcycle is not affected by the fitting of the Products. On return of any defective Products R&G shall at its option either supply a replacement or refund the purchase money but shall not be liable if the Products have been modified or used or maintained otherwise than in accordance with R&G's or manufacturer's instructions and good engineering practice or if the defect arises from accident or neglect. Other than identified above and subject to R&G not limiting its liability for causing death and personal injury, it shall not be liable for indirect or consequential loss and otherwise its liability shall be limited to the amounts paid by the Buyer for the Products or the fitting or service concerned. These terms do not affect the Buyer's statutory rights.

R&G RACING RETURNS POLICY (NON-FAULTY GOODS)

Returns must be pre-authorized (if not pre-authorized the return will be rejected). Goods may only be returned direct to us if they were purchased direct from us (customer must prove if necessary). Otherwise to be returned to original vendor. Goods must be in resellable condition, in the opinion of R&G Racing. All returns are subject to a 25% restocking and handling fee (25% of the gross value exc. P&P – at the prevailing price at time of purchase). The customer must pay any and all carriage charges. No returns of discontinued products, unless within 14 days of purchase. This policy does not affect your statutory rights and does not refer to faulty goods.

R&G Racing

Unit 1, Shelley's Lane, East Worldham, Alton, Hampshire, GU34 3AQ

Tel: +44 (0)1420 89007 Fax: +44 (0)1420 87301 www.rg-racing.com Email: info@rg-racing.com



NOTICE DE MONTAGE POUR FI0123 INSERTS DE CADRE
MV AGUSTA BRUTALE 1090 2013-

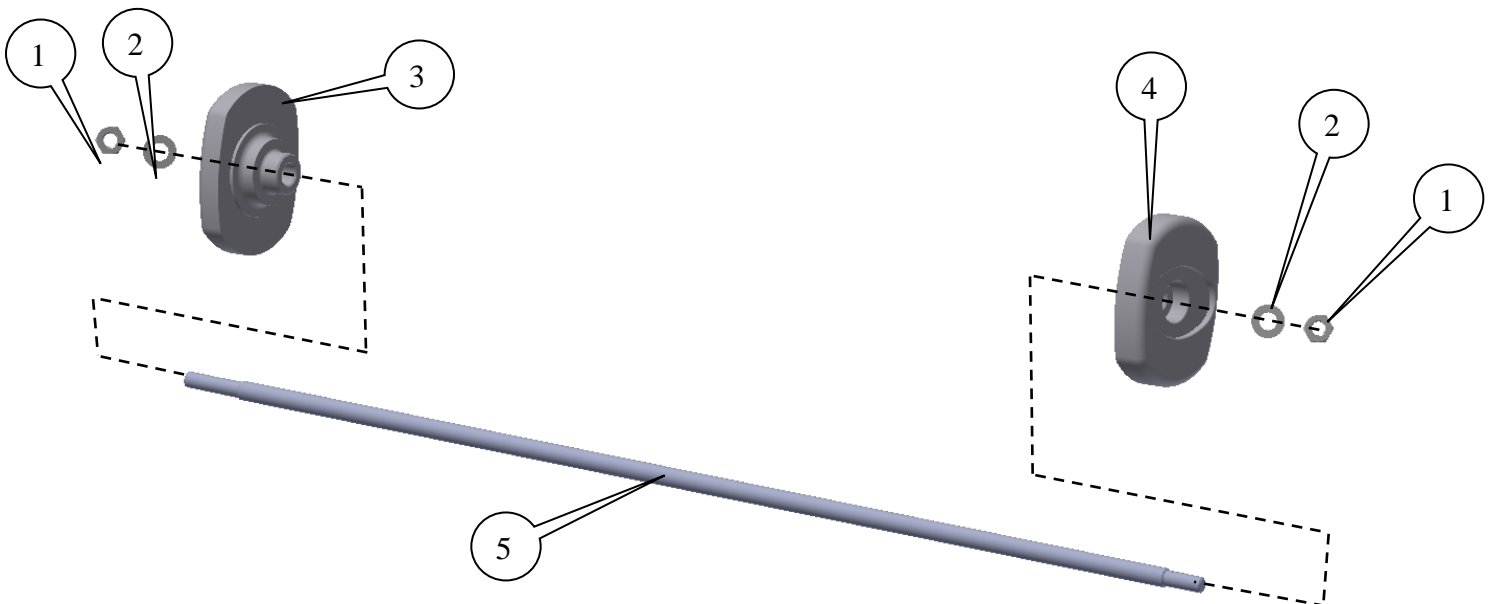


LE KIT CONTIENT LES ARTICLES EXPOSES CI-DESSOUS, VERIFIER QUE TOUTES LES PIECES SOIENT PRESENTES AVANT DE PROCEDER AU MONTAGE.

La façon dont le kit est emballé ne correspond pas forcément à la façon de monter les pièces sur la moto.

Notez que si les kits sont emballés avec un tube en plastic qui sépare les composants sur l'axe, ce tube doit être jeté.

LES PARTIES PRESENTEES PEUVENT ETRE UNIQUEMENT REPRESENTATIVES (POUR LA CLARTE DES INSTRUCTIONS UNIQUEMENT)





LEGENDE

- ARTICLE 1 = M5 ECROUS (x2).
ARTICLE 2 = M5 RONDELLES (x2).
ARTICLE 3 = INSERT CADRE (COTE GAUCHE=B0517) (x1).
ARTICLE 4 = INSERT CADRE (COTE DROIT=B0518) (x1).
ARTICLE 5 = AXE (SB0116=339mm DE LONG) (x1).

OUTILS REQUIS

- Clés à douille 2x 8mm

INSTRUCTIONS DE MONTAGE

- Insérer un écrou et une rondelle (articles 1 et 2) sur l'axe (article 5) et engager l'écrou de façon à ce que l'écrou soit complètement engagé.
- Passer l'axe avec écrou et rondelle dans l'insert de cadre le plus épais (article 3=B0517) pour que l'écrou et la rondelle se placent dans l'alésage de l'insert de cadre.
- Passer l'ensemble dans le pivot de cadre/bras oscillant du côté gauche de la moto.
- Placer l'insert de cadre plus fin (article 4=B0518) sur l'extrémité de l'axe de l'autre côté de la moto.
- Insérer la rondelle restante et l'écrou du kit sur le filetage et serrer jusqu'à ce que les 2 écrous soient engagés dans le nylon et que les longueurs dépassantes de chaque côté soient égales. *Ne pas trop bloquer – les écrous fixent l'ensemble.*
- Monter les stickers de caoutchouc dans le creux des 2 inserts de cadre.

ISSUE 1 21/04/2016 (NSY)

CONSUMER NOTICE

The catalogue description and any exhibition of samples are only broad indications of the Products and R&G may make design changes which do not diminish their performance or visual appeal and supplying them in such state shall conform to the order. The Buyer acknowledges no representation or warranty (other than as to title) has been given or will apply to the Products other than those in R&G's order or confirmation and the Buyer confirms it has chosen the Products as being of merchantable quality and suitable for its particular purposes. Where R&G fits the Products or undertakes other services it shall exercise reasonable skill and care and rectify any fault free of charge unless the workmanship has been disturbed. The Buyer is responsible for ensuring that the warranty on the motorcycle is not affected by the fitting of the Products. On return of any defective Products R&G shall at its option either supply a replacement or refund the purchase money but shall not be liable if the Products have been modified or used or maintained otherwise than in accordance with R&G's or manufacturer's instructions and good engineering practice or if the defect arises from accident or neglect. Other than identified above and subject to R&G not limiting its liability for causing death and personal injury, it shall not be liable for indirect or consequential loss and otherwise its liability shall be limited to the amounts paid by the Buyer for the Products or the fitting or service concerned. These terms do not affect the Buyer's statutory rights.

R&G RACING RETURNS POLICY (NON-FAULTY GOODS)

Returns must be pre-authorized (if not pre-authorized the return will be rejected). Goods may only be returned direct to us if they were purchased direct from us (customer must prove if necessary). Otherwise to be returned to original vendor. Goods must be in resellable condition, in the opinion of R&G Racing. All returns are subject to a 25% restocking and handling fee (25% of the gross value exc. P&P – at the prevailing price at time of purchase). The customer must pay any and all carriage charges. No returns of discontinued products, unless within 14 days of purchase. This policy does not affect your statutory rights and does not refer to faulty goods.

R&G Racing

Unit 1, Shelley's Lane, East Worldham, Alton, Hampshire, GU34 3AQ

Tel: +44 (0)1420 89007 Fax: +44 (0)1420 87301 www.rg-racing.com Email: info@rg-racing.com