



FITTING INSTRUCTIONS FOR CG0024BK
HEAVY-DUTY CHAIN GUARD
HONDA CRF1100L AFRICA TWIN 2020-
(INCLUDING ADVENTURE SPORTS MODELS)



THIS KIT CONTAINS THE ITEMS PICTURED AND LABELLED OVER PAGE.

SOME PARTS MAY BE SHOWN FOR CLARITY OF INSTRUCTIONS ONLY.

DO NOT PROCEED UNTIL YOU ARE SURE ALL PARTS ARE PRESENT.

PLEASE READ ALL INSTRUCTIONS BEFORE PROCEEDING.

**IF IN ANY DOUBT WHEN FITTING OUR PRODUCTS, CONSULT ONE OF OUR DEALERS
OR HAVE FITTED BY A QUALIFIED TECHNICIAN.**

PLEASE NOTE THAT THE WAY THE KIT IS PACKED DOES NOT NECESSARILY REPRESENT THE WAY OF
MOUNTING TO THE BIKE.

IN THE EVENT OF RUBBER WASHERS BEING USED TO HOLD COMPONENTS ONTO BOLTS,
THESE RUBBER WASHERS CAN BE THROWN AWAY.

DIGITAL COPIES OF THESE INSTRUCTIONS ARE AVAILABLE FROM:

WWW.RG-RACING.COM

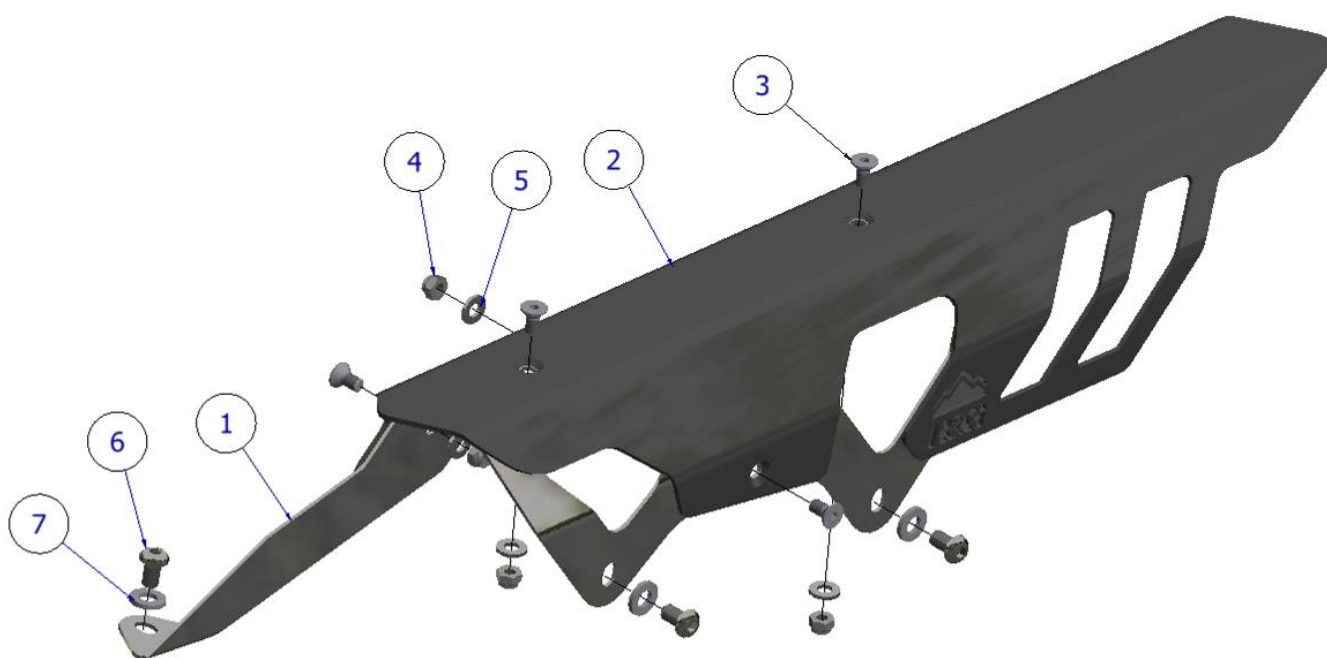


<u>TOOLS REQUIRED</u>	<u>GENERAL TORQUE SETTINGS</u>
<ul style="list-style-type: none"> • 10mm A/F SPANNER • 4 & 5mm A/F ALLEN TOOL 	<p>M4 BOLT = 8Nm</p> <p>M5 BOLT = 12Nm</p> <p>M6 BOLT = 15Nm</p> <p>M8 BOLT = 20Nm</p> <p>M10 BOLT = 40Nm</p> <p>M12 BOLT = 40Nm</p>

LEGEND

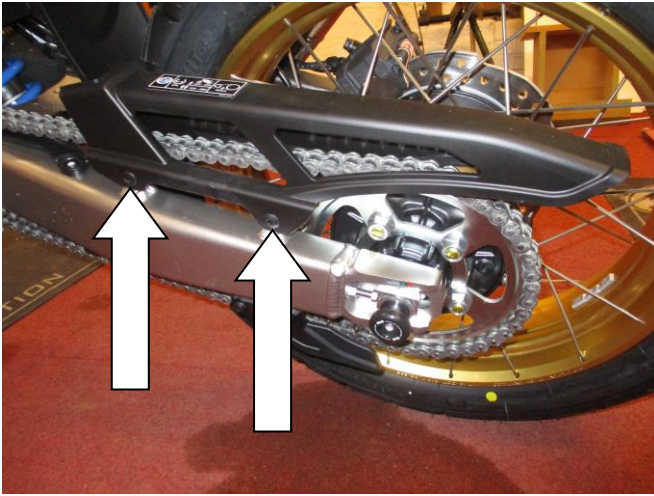
ITEM NO.	DESCRIPTION	QTY
ITEM 1	SMW0170 CHAIN GUARD BRACKET STAINLESS STEEL	1
ITEM 2	SMW0171 CHAIN GUARD ALUMINIUM	1
ITEM 3	M5x0.80x10.00mm COUNTERSINK BOLT	4
ITEM 4	M5x0.80 NYLOC NUT	4
ITEM 5	M5 WASHER Ø=11mm	4
ITEM 6	M6x1.00x10.00mm BUTTON-HEAD BOLT	3
ITEM 7	M6 WASHER Ø=13.5mm	3

ASSEMBLY EXPLODED VIEW

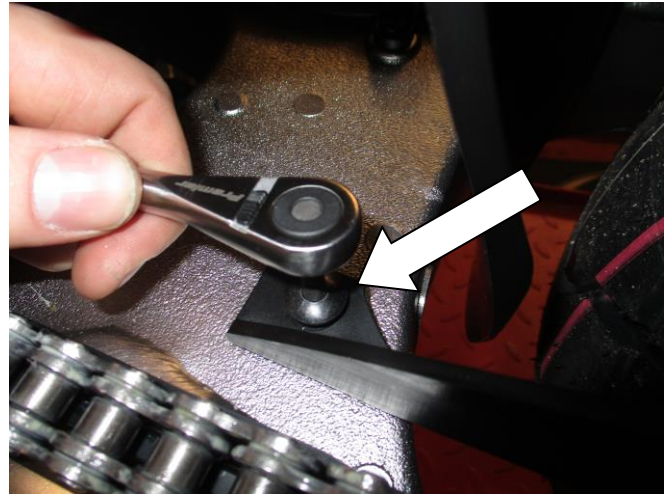




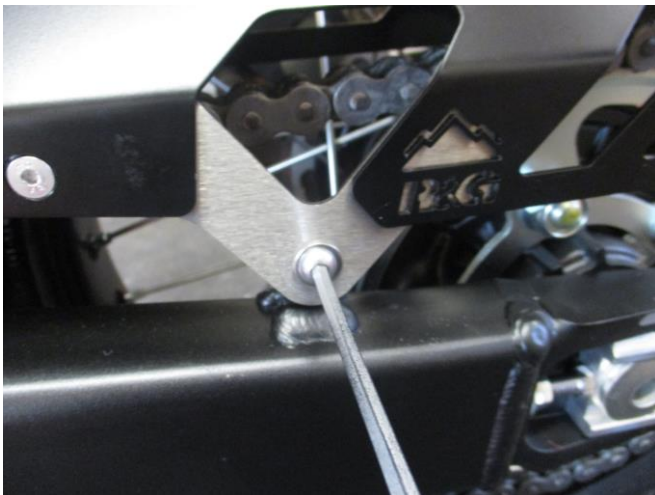
FITTING PICTURES



Picture 1



Picture 2



Picture 3



Picture 4

FITTING INSTRUCTIONS

- Remove the 3x bolts securing the original plastic guard using a 5mm Allen tool, as shown in pictures 1 and 2, then remove the guard.
- Pre-assemble the R&G chain guard according to the diagram on page 2, by sliding the main guard (**item 2**) over the mounting bracket (**item 1**), then securing together with the 4x M5 countersink bolts (**item 3**), M5 nuts (**item 4**) and M5 washers (**item 5**). Use a 10mm spanner to hold the nuts while tightening the bolts using a 4mm Allen tool.
- Offer the R&G chain guard assembly up to the original mounting points on the swingarm, then secure with the 3x M6 bolts (**item 6**) and M6 washers (**item 7**) using a 4mm Allen tool, as shown in pictures 3 and 4.
- Check tightness of all fixings during periodic chain maintenance.

R&G Racing

Unit 1, Shelley's Lane, East Worldham, Alton, Hampshire, GU34 3AQ

Tel: +44 (0)1420 89007 Fax: +44 (0)1420 87301 www.rg-racing.com Email: info@rg-racing.com



ISSUE 1 – 30/03/2020 (FB)

CONSUMER NOTICE

The catalogue description and any exhibition of samples are only broad indications of the Products and R&G may make design changes which do not diminish their performance or visual appeal and supplying them in such state shall conform to the order. The Buyer acknowledges no representation or warranty (other than as to title) has been given or will apply to the Products other than those in R&G's order or confirmation and the Buyer confirms it has chosen the Products as being of merchantable quality and suitable for its particular purposes. Where R&G fits the Products or undertakes other services it shall exercise reasonable skill and care and rectify any fault free of charge unless the workmanship has been disturbed. The Buyer is responsible for ensuring that the warranty on the motorcycle is not affected by the fitting of the Products. On return of any defective Products R&G shall at its option either supply a replacement or refund the purchase money but shall not be liable if the Products have been modified or used or maintained otherwise than in accordance with R&G's or manufacturer's instructions and good engineering practice or if the defect arises from accident or neglect. Other than identified above and subject to R&G not limiting its liability for causing death and personal injury, it shall not be liable for indirect or consequential loss and otherwise its liability shall be limited to the amounts paid by the Buyer for the Products or the fitting or service concerned. These terms do not affect the Buyer's statutory rights.

R&G RACING RETURNS POLICY (NON-FAULTY GOODS)

Returns must be pre-authorized (if not pre-authorized the return will be rejected). Goods may only be returned direct to us if they were purchased direct from us (customer must prove if necessary). Otherwise to be returned to original vendor. Goods must be in re-sellable condition, in the opinion of R&G Racing. All returns are subject to a 25% restocking and handling fee (25% of the gross value exc. P&P – at the prevailing price at time of purchase). The customer must pay any and all carriage charges. No returns of discontinued products, unless within 14 days of purchase. This policy does not affect your statutory rights and does not refer to faulty goods.

R&G Racing

Unit 1, Shelley's Lane, East Worldham, Alton, Hampshire, GU34 3AQ

Tel: +44 (0)1420 89007 Fax: +44 (0)1420 87301 www.rg-racing.com Email: info@rg-racing.com



NOTICE DE MONTAGE POUR CG0024BK
PROTECTION DE CHAÎNE LOURDE
HONDA CRF1100L AFRICA TWIN 2020-
(INCLUS MODÈLES SPORTS AVENTURE)



CE KIT CONTIENT LES ARTICLES ILLUSTRÉS ET ÉTIQUETES SUR LA PAGE.

CERTAINES PARTIES PEUVENT ÊTRE PRÉSENTES UNIQUEMENT POUR LA CLARTÉ DES INSTRUCTIONS.

NE PAS PROCÉDER AU MONTAGE TANT QUE VOUS N'ÊTES PAS SÛR QUE TOUTES LES PIÈCES SOIENT PRÉSENTES.

VEUILLEZ LIRE TOUTES LES INSTRUCTIONS AVANT DE CONTINUER.

EN CAS DE DOUTE LORS DU MONTAGE DE NOS PRODUITS, CONSULTEZ UN DE NOS REVENDUEURS OU FAITES APPEL À UN TECHNICIEN QUALIFIÉ.

VEUILLEZ NOTER QUE LA FAÇON DONT LE KIT EST EMBALLÉ NE REPRÉSENTE PAS NECESSAIREMENT LA MANIÈRE DE LE MONTER SUR LA MOTO.

SI DES RONDELLES EN CAOUTCHOUC SONT UTILISÉES POUR MAINTENIR LES COMPOSANTS SUR LES BOULONS, ELLES PEUVENT ÊTRE JETÉES.

NOTICE DISPONIBLE AU TÉLÉCHARGEMENT SUR : WWW.RG-RACING.COM

R&G Racing

Unit 1, Shelley's Lane, East Worldham, Alton, Hampshire, GU34 3AQ

Tel: +44 (0)1420 89007 Fax: +44 (0)1420 87301 www.rg-racing.com Email: info@rg-racing.com

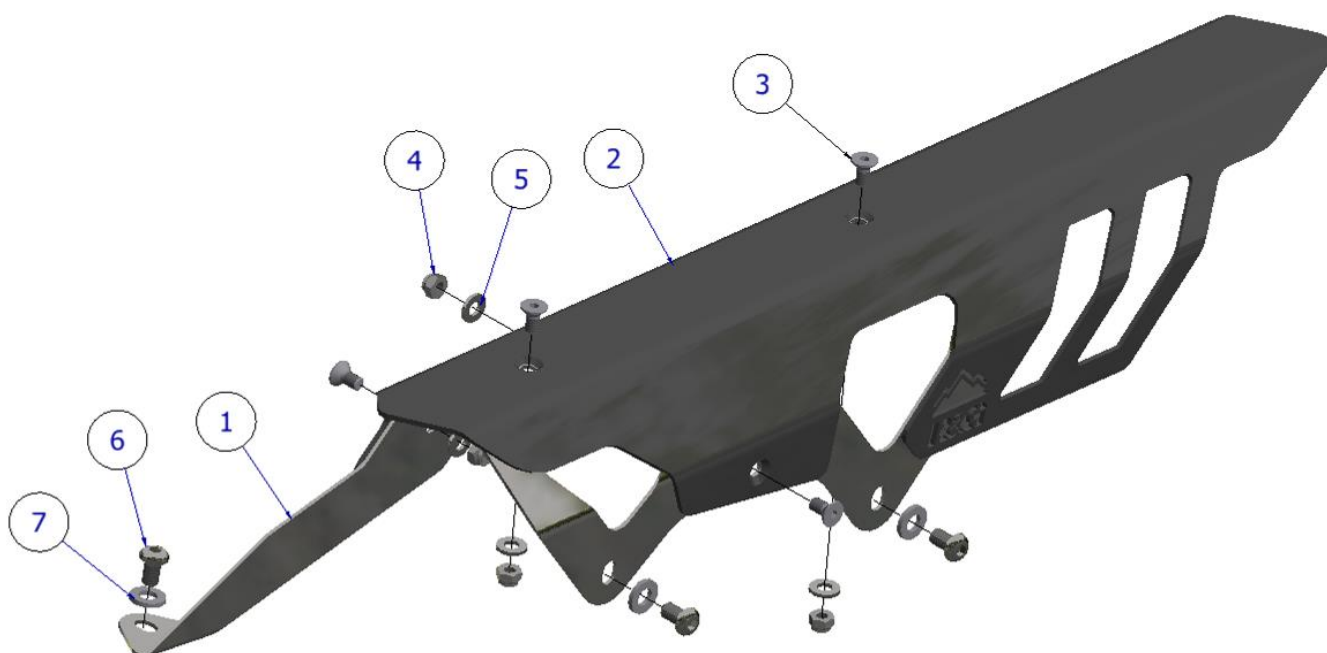


<u>OUTILS REQUIS</u>	<u>VALEURS DE SERRAGE</u>
<ul style="list-style-type: none"> • CLÉ À MOLETTE 10mm • CLÉS ALLEN 4 & 5mm 	M4 BOULON = 8Nm M5 BOULON = 12Nm M6 BOULON = 15Nm M8 BOULON = 20Nm M10 BOULON = 40Nm M12 BOULON = 40Nm

LÉGENDE

ARTICLE NO.	DESCRIPTION	QTÉ
ARTICLE 1	SMW0170 SUPPORT DE GARDE-CHAÎNE ACIER INOXYDABLE	1
ARTICLE 2	SMW0171 PROTECTION CHAÎNE ALUMINIUM	1
ARTICLE 3	M5x0.80x10.00mm BOULON	4
ARTICLE 4	M5x0.80 ÉCROU	4
ARTICLE 5	M5 RONDELLE Ø=11mm	4
ARTICLE 6	M6x1.00x10.00mm BOULON	3
ARTICLE 7	M6 RONDELLE Ø=13.5mm	3

SCHÉMA



R&G Racing

Unit 1, Shelley's Lane, East Worldham, Alton, Hampshire, GU34 3AQ

Tel: +44 (0)1420 89007 Fax: +44 (0)1420 87301 www.rg-racing.com Email: info@rg-racing.com



NOTICE DE MONTAGE

- Retirez les 3 boulons fixant la protection en plastique d'origine à l'aide d'une clé Allen de 5 mm, comme indiqué sur les photos 1 et 2, puis retirez la protection.
- Pré-assembler la protection chaîne R&G selon le schéma de la page 2, en faisant glisser le carter principal (article 2) sur le support de montage (article 1), puis le fixer avec les 4x boulons à tête fraisée M5 (article 3), écrous M5 (article 4) et rondelles M5 (article 5). Utilisez une clé de 10 mm pour maintenir les écrous tout en serrant les boulons à l'aide d'une clé Allen de 4 mm.
- Offrez la protection chaîne R&G sur les points de montage d'origine sur le bras oscillant, puis fixez-la avec les 3 boulons M6 (article 6) et les rondelles M6 (article 7) à l'aide d'une clé Allen de 4 mm, comme indiqué sur les photos 3 et 4.
- Vérifier le serrage de toutes les fixations lors de l'entretien périodique de la chaîne.

ISSUE 1 – 30/03/2020 (FB)