



FITTING INSTRUCTIONS FOR AB0033BK ADVENTURE BARS
SUZUKI V-STORM 250 2017



THIS KIT CONTAINS THE ITEMS PICTURED AND LABELLED BELOW.
DO NOT PROCEED UNTIL YOU ARE SURE ALL PARTS ARE PRESENT.

Please note that the way the kit is packed does not necessarily represent the way of mounting to the bike
Please note that in cases where kits are packed with rubber washers holding the components onto the bolt – *the rubber washers should be thrown away!*

THE PARTS SHOWN MAY BE REPRESENTATIVE ONLY (FOR CLARITY OF INSTRUCTIONS ONLY)

Digital copies of these instructions are available to download from www.rg-racing.com

R&G
Unit 1, Shelley's Lane, East Worldham, Alton, Hampshire, GU34 3AQ
Tel: +44 (0)1420 89007 Fax: +44 (0)1420 87301 www.rg-racing.com Email: info@rg-racing.com



GENERAL TORQUE SETTINGS

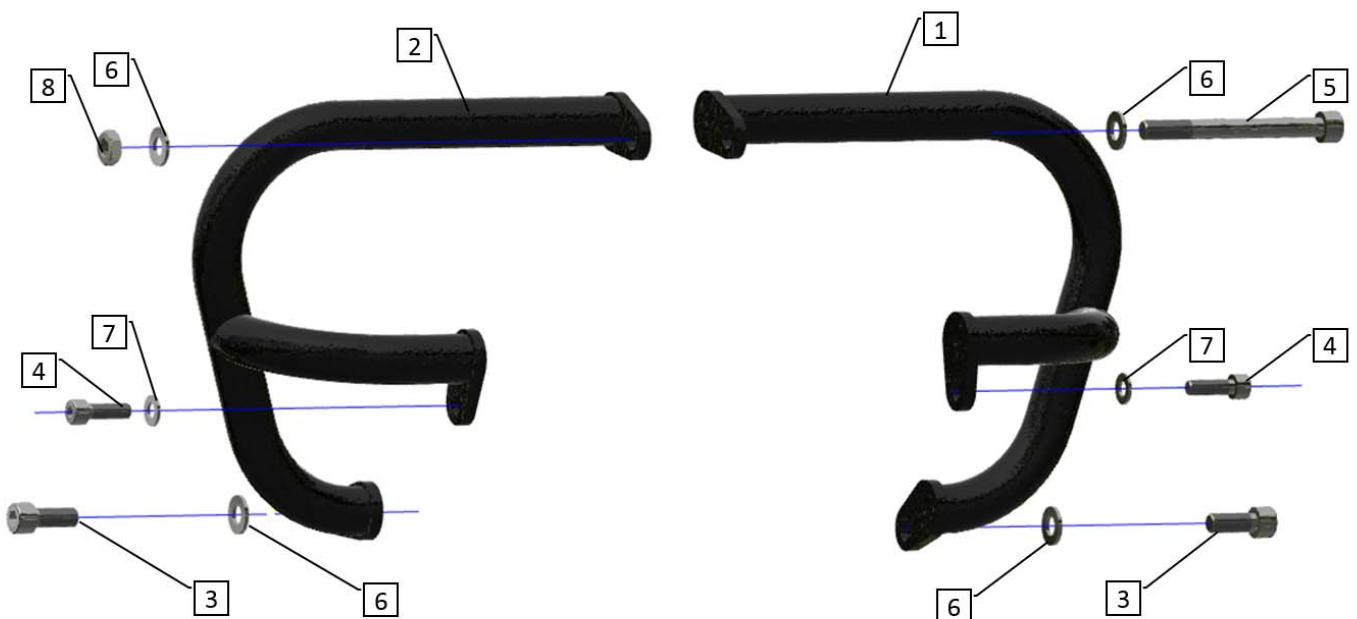
M4 BOLT = 8Nm
 M5 BOLT = 12Nm
 M6 BOLT = 15Nm
 M8 BOLT = 20Nm
 M10 BOLT = 40Nm

TOOLS REQUIRED

- Socket set and wrench.
- Torque wrench (up to 40Nm).
- Soft faced mallet.

THIS KIT INCLUDES:

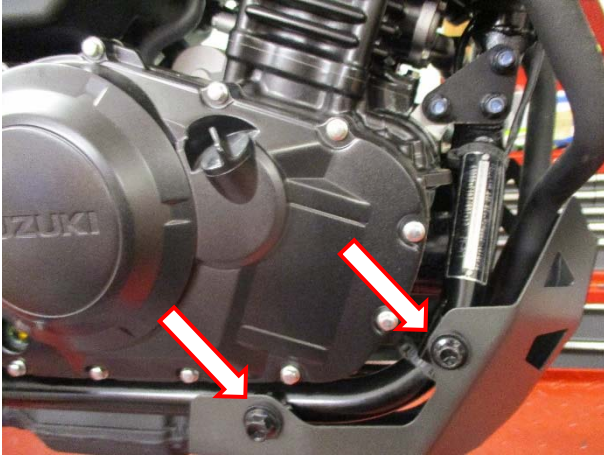
- 1) 1 x CB067 CRASH BAR LEFT BLACK
- 2) 1 x CB068 CRASH BAR RIGHT BLACK
- 3) 2 x M10 x 1.25 x 25mm LONG CAP HEAD BOLT
- 4) 2 x M8 x 1.25 x 25mm LONG CAP HEAD BOLT 8.8 GRADE (MID MOUNTS BOTH SIDES)
- 5) 1 x M10 x 1.25 x 100mm LONG CAP HEAD BOLT 8.8 GRADE (TOP MOUNT)
- 6) 4 x M10 x 19mm OD WASHERS
- 7) 2 x M8 x 16mm OD WASHERS
- 8) 1 X M10 x 1.25 NYLOC NUT
- 9) 2 x FLAT CAP (8mm) CAP HEAD BOLT HEAD BLANKING CAPS (NC0009)
- 10) 3 x FLAT CAP (10mm) CAP HEAD BOLT HEAD BLANKING CAPS (NC0010)



R&G

Unit 1, Shelley's Lane, East Worldham, Alton, Hampshire, GU34 3AQ

Tel: +44 (0)1420 89007 Fax: +44 (0)1420 87301 www.rg-racing.com Email: info@rg-racing.com



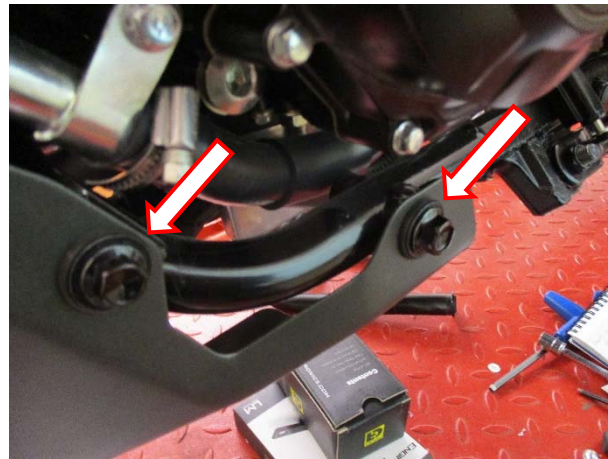
PICTURE 1



PICTURE 2



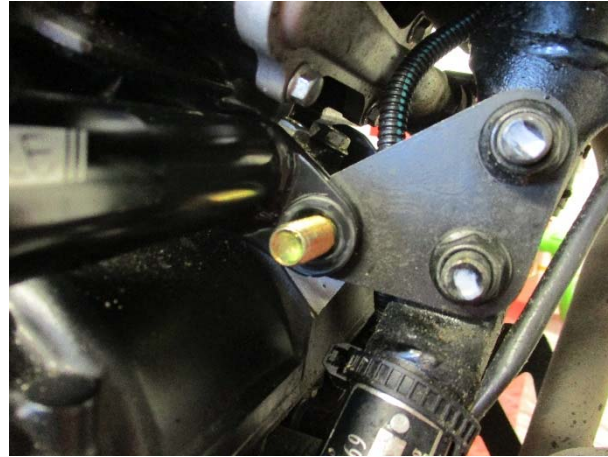
PICTURE 3



PICTURE 4



PICTURE 5



PICTURE 6



PICTURE 7



PICTURE 8

FITTING INSTRUCTIONS

- From the right hand side of the bike remove the two bolts arrowed in picture 1
- It is a good idea to support the engine at this point to prevent the engine moving to aide assembly.
- On the right hand side of the bike towards the front of the engine you will find a support plate, remove the lower nut on the engine support bar
- Remove the engine support bolt from the bracket as shown in picture 2 (a soft mallet and drift may be carefully used).
- Carefully offer the right-hand side adventure bar (item 2) into position shown in picture 3 and secure the two lower mounts in position using one M10 x 25mm bolt with M10 washer (items 3 and 6) in the lower mount and one M8 x 25 bolt with M8 washer (items 4 & 7) as shown in picture 3 so the adventure bar is loosely fitted to the bike.
- On the left hand side of the bike remove the two bolts arrowed in picture 4.
- Offer up the left hand adventure bar (item 1) to the bike and secure in the same way as the right hand side bar.
- The two upper mounts should now line up with the engine support plate mount
- From the left hand side, push the new engine support bolt (item 5) through the left adventure bar top mount, engine support plate and right hand side adventure bar mount as shown in pictures 5 and 6
- Wind the nyloc nut (item 8) onto the end of the support bar as shown in picture 7.
- Using an allen key to secure the engine bolt and correct socket, tighten the nyloc nut (please ensure threads are fully engaged with the plastic thread and correct torque is applied)
- Tighten the 4 mounting bolts on the left and right hand lower and mid mounts using the correct torque setting.
- Check engine bars are secure and all bolts have been torqued to the correct values
- Finally fit the 5 plastic nut caps (items 9 & 10) onto the mounting bolts as shown in picture 8.

ISSUE 1 05/09/18 (DM)

R&G

Unit 1, Shelley's Lane, East Worldham, Alton, Hampshire, GU34 3AQ
 Tel: +44 (0)1420 89007 Fax: +44 (0)1420 87301 www.rg-racing.com Email: info@rg-racing.com



CONSUMER NOTICE

The catalogue description and any exhibition of samples are only broad indications of the Products and R&G may make design changes which do not diminish their performance or visual appeal and supplying them in such state shall conform to the order. The Buyer acknowledges no representation or warranty (other than as to title) has been given or will apply to the Products other than those in R&G's order or confirmation and the Buyer confirms it has chosen the Products as being of merchantable quality and suitable for its particular purposes. Where R&G fits the Products or undertakes other services it shall exercise reasonable skill and care and rectify any fault free of charge unless the workmanship has been disturbed. The Buyer is responsible for ensuring that the warranty on the motorcycle is not affected by the fitting of the Products. On return of any defective Products R&G shall at its option either supply a replacement or refund the purchase money but shall not be liable if the Products have been modified or used or maintained otherwise than in accordance with R&G's or manufacturer's instructions and good engineering practice or if the defect arises from accident or neglect. Other than identified above and subject to R&G not limiting its liability for causing death and personal injury, it shall not be liable for indirect or consequential loss and otherwise its liability shall be limited to the amounts paid by the Buyer for the Products or the fitting or service concerned. These terms do not affect the Buyer's statutory rights.

R&G RETURNS POLICY (NON-FAULTY GOODS)

Returns must be pre-authorized (if not pre-authorized the return will be rejected). Goods may only be returned direct to us if they were purchased direct from us (customer must prove if necessary). Otherwise to be returned to original vendor. Goods must be in re-sellable condition, in the opinion of R&G. All returns are subject to a 25% restocking and handling fee (25% of the gross value exc. P&P – at the prevailing price at time of purchase). The customer must pay any and all carriage charges. No returns of discontinued products, unless within 14 days of purchase. This policy does not affect your statutory rights and does not refer to faulty goods.

R&G

Unit 1, Shelley's Lane, East Worldham, Alton, Hampshire, GU34 3AQ

Tel: +44 (0)1420 89007 Fax: +44 (0)1420 87301 www.rg-racing.com Email: info@rg-racing.com



**NOTICE DE MONTAGE POUR AB0033BK BARRES AVENTURE
SUZUKI V-STORM 250 2017**



Le kit contient les articles exposés ci-dessous, vérifier que toutes les pièces soient présentes avant de procéder au montage.

La façon dont le kit est emballé ne correspond pas forcément à la façon de monter les pièces sur la moto.

**LES PARTIES PRESENTEES PEUVENT ETRE UNIQUEMENT REPRESENTATIVES
(POUR LA CLARTE DES INSTRUCTIONS UNIQUEMENT)**

Notice disponible au téléchargement sur www.rg-racing.com

R&G

Unit 1, Shelley's Lane, East Worldham, Alton, Hampshire, GU34 3AQ
Tel: +44 (0)1420 89007 Fax: +44 (0)1420 87301 www.rg-racing.com Email: info@rg-racing.com



VALEURS DE SERRAGE RECOMMANDEES :

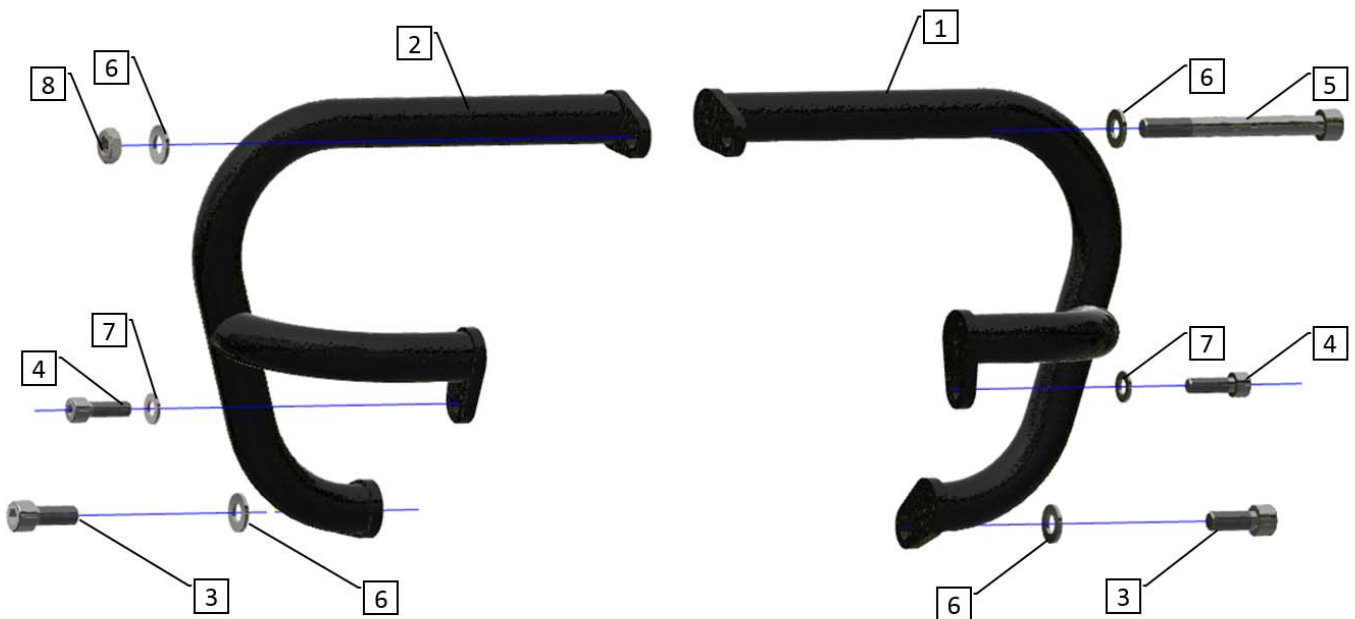
M4 BOULON = 8Nm
 M5 BOULON = 12Nm
 M6 BOULON = 15Nm
 M8 BOULON = 20Nm
 M10 BOULON = 40Nm
 M12 BOULON = 40Nm

OUTILS REQUIS

- Clé à cliquet + douilles.
- Clé dynamométrique (à 40Nm).
- Maillet à face douce.

LE KIT DOIT CONTENIR:

- 1) 1 x CB067 BARRE DE CRASH – CÔTÉ GAUCHE - NOIR
- 1) 1 x CB068 BARRE DE CRASH – CÔTÉ DROIT - NOIR
- 1) 2 x M10 x 1.25 x 25mm BOULON
- 1) 2 x M8 x 1.25 x 25mm BOULON GRADE 8.8 (SUPPORTS INTERMÉDIAIRES DES 2 CÔTÉS)
- 1) 1 x M10 x 1.25 x 100mm BOULON GRADE 8.8 (SUPPORT SUPÉRIEUR)
- 1) 4 x M10 x 19mm OD RONDELLES
- 1) 2 x M8 x 16mm OD RONDELLES
- 1) 1 X M10 x 1.25 ÉCROU
- 1) 2 x BOUCHON PLAT (8mm) BOUCHON D'OBTURATION DU BOULON (NC0009)
- 1) 3 x BOUCHON PLAT (10mm) BOUCHON D'OBTURATION DU BOULON (NC0010)



R&G

Unit 1, Shelley's Lane, East Worldham, Alton, Hampshire, GU34 3AQ

Tel: +44 (0)1420 89007 Fax: +44 (0)1420 87301 www.rg-racing.com Email: info@rg-racing.com

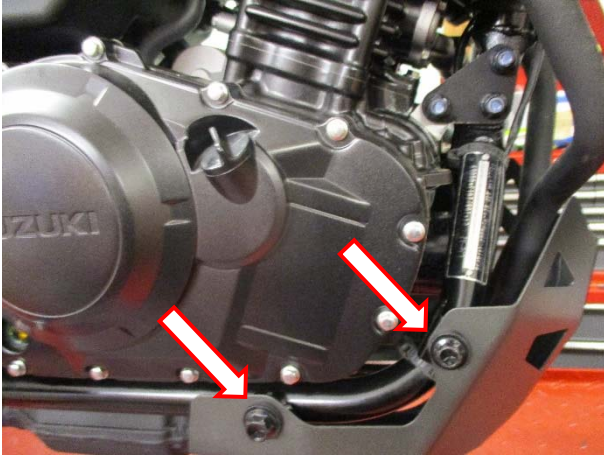


PHOTO 1

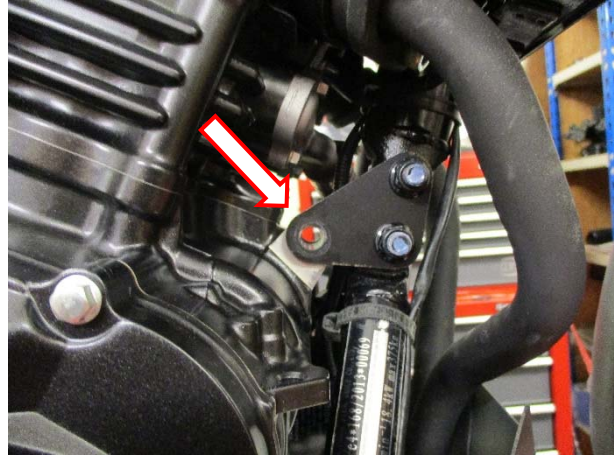


PHOTO 2



PHOTO 3

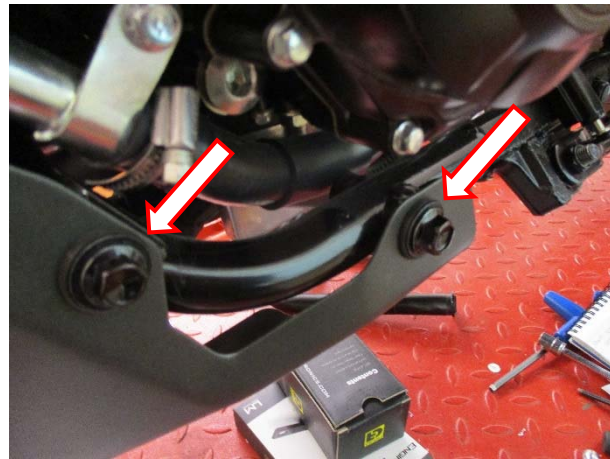


PHOTO 4

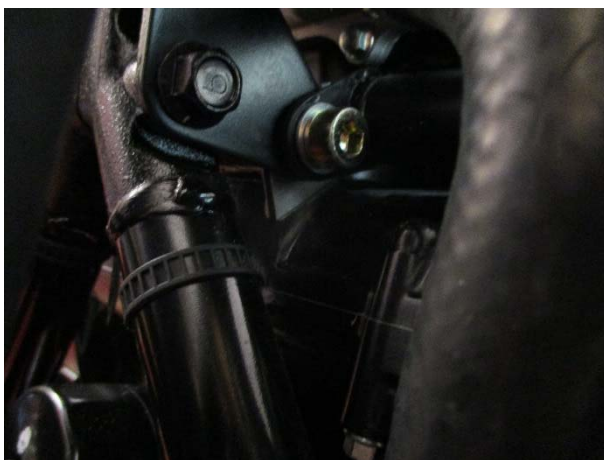


PHOTO 5

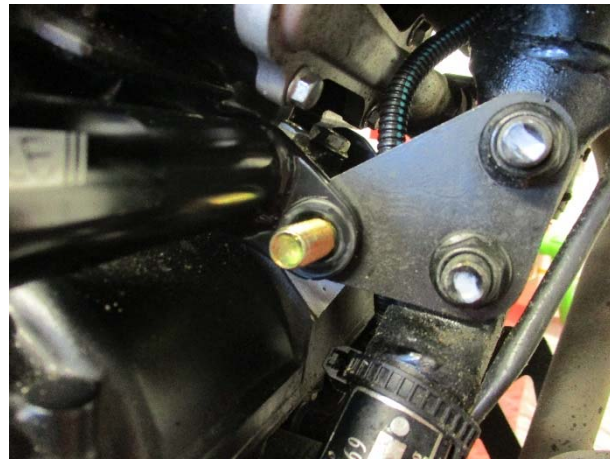


PHOTO 6



PHOTO 7



PHOTO 8

NOTICE DE MONTAGE:

- Du côté droit de la moto, enlever les 2 boulons indiqués sur la photo 1.
- Il est judicieux de supporter le moteur afin d'éviter que le moteur ne bouge, ce qui facilitera l'assemblage.
- Du côté droit de la moto, contre l'avant du moteur, vous trouverez une plaque de support, enlever l'écrou inférieur de la barre de support moteur.
- Enlever le boulon de support moteur du support, voir photo 2 (un maillet doux doit être utilisé, avec précaution).
- Monter la barre aventure du côté droit (article 2) en position, voir la photo 3 puis fixer les 2 supports inférieurs en position, en utilisant un boulon M10 x 25mm et une rondelle M10 (articles 3 et 6) sur le support inférieur et un boulon M8 x 25 muni d'une rondelle M8 (articles 4 & 7), voir la photo 3 de façon à ce que la barre aventure soit installée, mais pas serrée définitivement sur la moto.
- Du côté gauche de la moto, enlever les 2 boulons indiqués sur la photo 4.
- Monter la barre aventure du côté gauche (article 1) sur la moto, puis fixez la de la même façon que la barre du côté droit.
- Les 2 supports supérieurs doivent maintenant être alignés avec la plaque de fixation du support moteur.
- Du côté gauche, pousser le nouveau boulon de support moteur (article 5) dans le support supérieur de la barre aventure du côté gauche, la plaque de fixation et le support de barre aventure du côté droit, voir les photos 5 et 6.
- Tournez l'écrou (article 8) sur l'extrémité de de la barre de support, voir la photo 7.
- Utiliser une clé Allen ainsi qu'une clé adéquate pour fixer le boulon moteur, serrer l'écrou (veiller à ce que les filetages soient complètement engagés et que la valeur de serrage soit correcte).
- Serrer les 4 boulons de fixation 4 sur les supports intermédiaire et inférieurs du côté gauche et du côté droit, en respectant les valeurs de serrage adéquates.
- Vérifier que les barres moteur soient fixées et que tous les boulons aient été correctement serrés selon les valeurs recommandées.
- Insérer les 5 bouchons d'écrou (articles 9 & 10) sur les boulons de fixation, voir la photo 8.

ISSUE 1 05/09/18 (DM)

R&G

Unit 1, Shelley's Lane, East Worldham, Alton, Hampshire, GU34 3AQ
 Tel: +44 (0)1420 89007 Fax: +44 (0)1420 87301 www.rg-racing.com Email: info@rg-racing.com



CONSUMER NOTICE

The catalogue description and any exhibition of samples are only broad indications of the Products and R&G may make design changes which do not diminish their performance or visual appeal and supplying them in such state shall conform to the order. The Buyer acknowledges no representation or warranty (other than as to title) has been given or will apply to the Products other than those in R&G's order or confirmation and the Buyer confirms it has chosen the Products as being of merchantable quality and suitable for its particular purposes. Where R&G fits the Products or undertakes other services it shall exercise reasonable skill and care and rectify any fault free of charge unless the workmanship has been disturbed. The Buyer is responsible for ensuring that the warranty on the motorcycle is not affected by the fitting of the Products. On return of any defective Products R&G shall at its option either supply a replacement or refund the purchase money but shall not be liable if the Products have been modified or used or maintained otherwise than in accordance with R&G's or manufacturer's instructions and good engineering practice or if the defect arises from accident or neglect. Other than identified above and subject to R&G not limiting its liability for causing death and personal injury, it shall not be liable for indirect or consequential loss and otherwise its liability shall be limited to the amounts paid by the Buyer for the Products or the fitting or service concerned. These terms do not affect the Buyer's statutory rights.

R&G RETURNS POLICY (NON-FAULTY GOODS)

Returns must be pre-authorised (if not pre-authorised the return will be rejected). Goods may only be returned direct to us if they were purchased direct from us (customer must prove if necessary). Otherwise to be returned to original vendor. Goods must be in re-sellable condition, in the opinion of R&G. All returns are subject to a 25% restocking and handling fee (25% of the gross value exc. P&P – at the prevailing price at time of purchase). The customer must pay any and all carriage charges. No returns of discontinued products, unless within 14 days of purchase. This policy does not affect your statutory rights and does not refer to faulty goods.

R&G

Unit 1, Shelley's Lane, East Worldham, Alton, Hampshire, GU34 3AQ

Tel: +44 (0)1420 89007 Fax: +44 (0)1420 87301 www.rg-racing.com Email: info@rg-racing.com



MONTAGEANLEITUNG FÜR AB0033BK ADVENTURE STURZBÜGEL
SUZUKI V-STORM 250 2017



ALLE TEILE SIND UNTEN ABGEBILDET UND GEKENNZEICHNET. BEVOR SIE MIT DER MONTAGE BEGINNEN, ÜBERPRÜFEN SIE, DASS ALLE TEILE VORHANDEN SIND.

Hinweis: Die Verpackung der Teile stellt nicht die Reihenfolge der Montage dar.

DIE UNTEN ABGEBILDETEN TEILE DIENEN LEDIGLICH ZUR ERKLÄRUNG

Hinweis für Kits mit Plastikunterlegscheiben an den Schrauben – Diese Plastikunterlegscheiben werden nicht für den Einbau benötigt!

Eine digitale Version dieser Montageanleitung kann auf folgender Seite heruntergeladen werden:

www.rg-racing.com

R&G

Unit 1, Shelley's Lane, East Worldham, Alton, Hampshire, GU34 3AQ

Tel: +44 (0)1420 89007 Fax: +44 (0)1420 87301 www.rg-racing.com Email: info@rg-racing.com



ALLGEMEINE ANZUGSDREHMOMENTE:

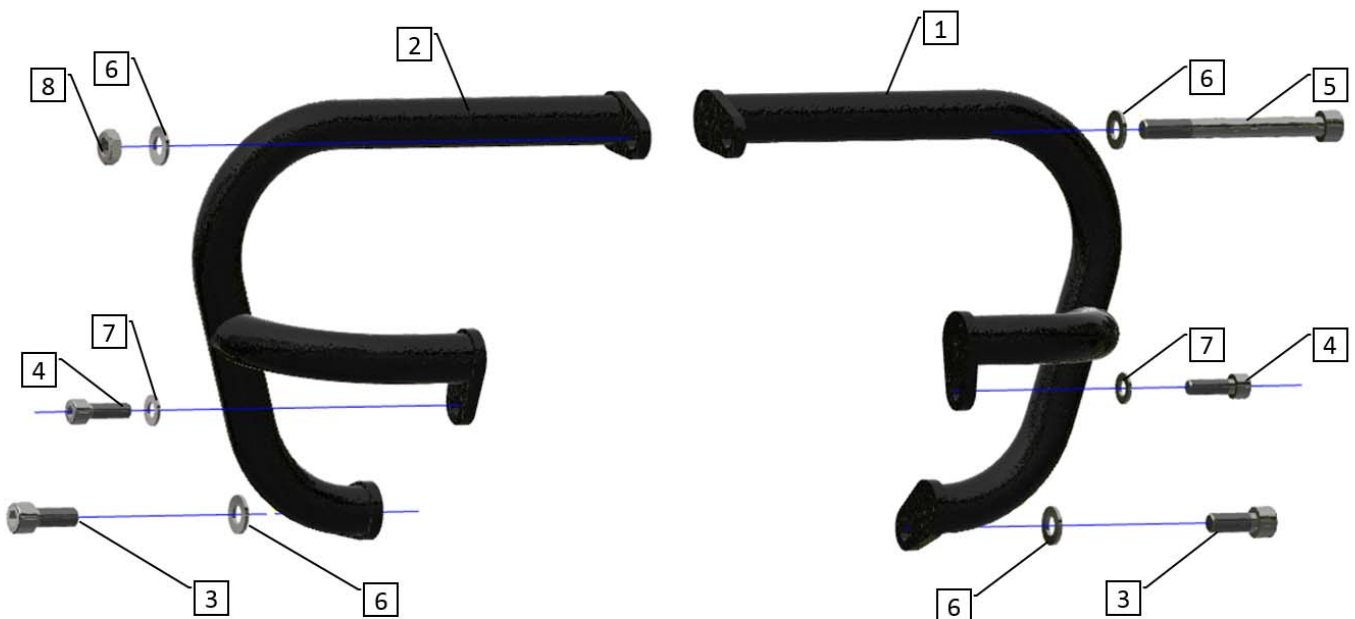
M4 SCHRAUBE = 8Nm
 M5 SCHRAUBE = 12Nm
 M6 SCHRAUBE = 15Nm
 M8 SCHRAUBE = 20Nm
 M10 SCHRAUBE = 40Nm

SIE BENÖTIGEN FOLGENDES WERZEUG

- Steckschlüsselsatz
- Drehmomentschlüssel (bis 40Nm)
- Schonhammer

LIEFERUMFANG:

- 21) 1 x CB067 STURZBÜGEL LINKS SCHWARZ
 22) 1 x CB068 STURZBÜGEL RECHTS SCHWARZ
 23) 2 x M10 x 1,25 x 25mm INBUSSCHRAUBE
 24) 2 x M8 x 1,25 x 25mm INBUSSCHRAUBE (MITTLERER HALTER AN BEIDEN SEITEN)
 25) 1 x M10 x 1,25 x 100mm INBUSSCHRAUBE (OBERER HALTER)
 26) 4 x M10 x 19mm UNTERLEGSSCHEIBE
 27) 2 x M8 x 16mm UNTERLEGSSCHEIBE
 28) 1 X M10 x 1,25 SELBSTSICHERNDE MUTTER
 29) 2 x FLACHE KAPPE (8mm) FÜR INBUSSCHRAUBEN (NC0009)
 30) 3 x FLACHE KAPPE (10mm) FÜR INBUSSCHRAUBEN (NC0010)



R&G

Unit 1, Shelley's Lane, East Worldham, Alton, Hampshire, GU34 3AQ

Tel: +44 (0)1420 89007 Fax: +44 (0)1420 87301 www.rg-racing.com Email: info@rg-racing.com

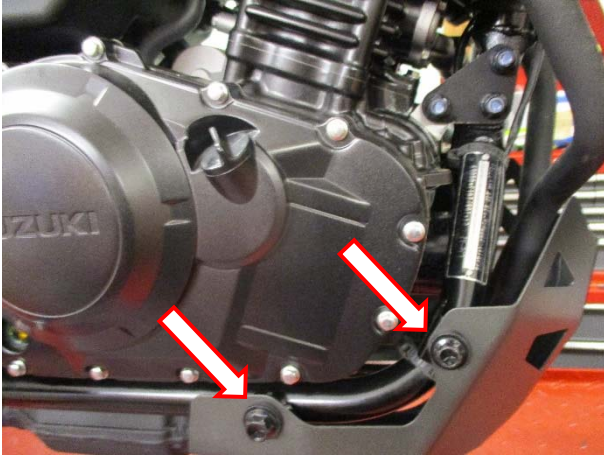


ABBILDUNG 1



ABBILDUNG 2



ABBILDUNG 3

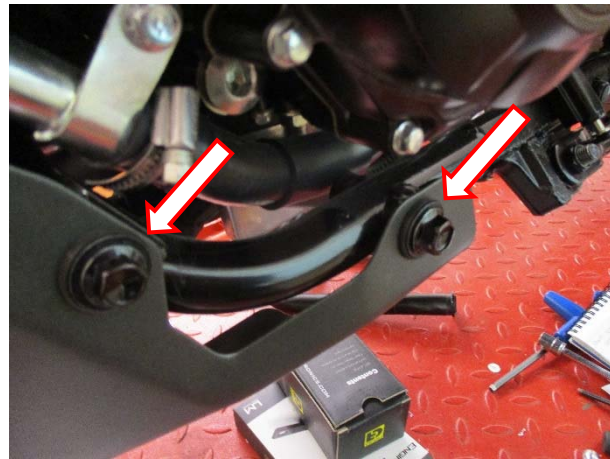


ABBILDUNG 4

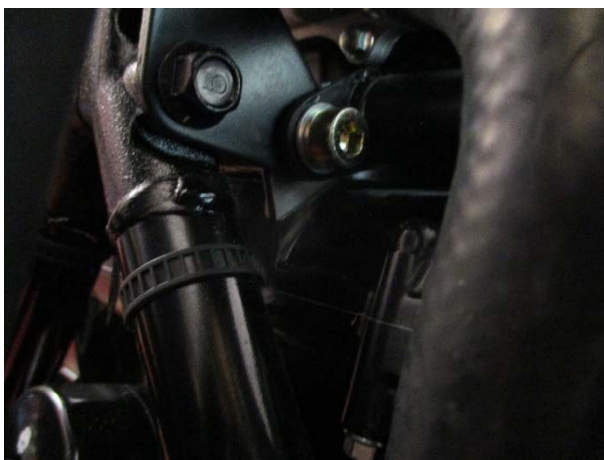


ABBILDUNG 5

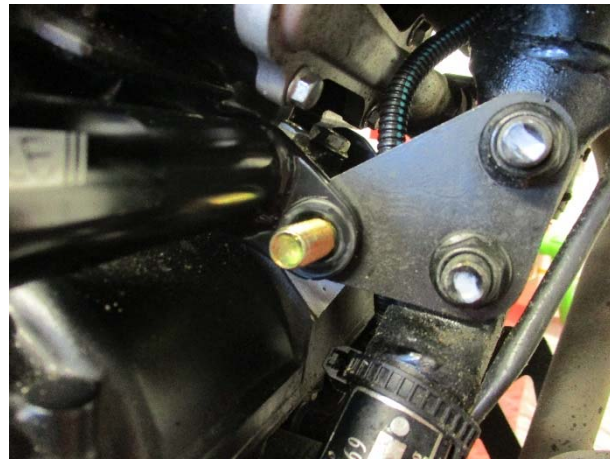


ABBILDUNG 6



ABBILDUNG 7



ABBILDUNG 8

MONTAGEANLEITUNG

- An der rechten Seite des Motorrades, die zwei Schrauben entfernen, die in Abbildung 1 gekennzeichnet sind.
- Es empfiehlt sich, den Motor zu diesem Zeitpunkt zu stützen - somit wird verhindert, dass der Motor sich während der Montage bewegen kann.
- An der rechten Seite des Motorrads, vorne am Motor, ist eine Schutzplatte – entfernen Sie die untere Mutter an der Motorhalterstange.
- Entfernen Sie die Schraube von der Halterung wie in Abbildung 2 abgebildet (evtl. einen Schonhammer vorsichtig benutzen).
- Den Adventure Sturzbügel für die rechte Seite (Artikel 2) vorsichtig in Position bringen wie in Abbildung 3 abgebildet, und die zwei unteren Halterungen in Position fixieren mit einer M10 x 25mm Schraube und M10 Unterlegscheibe (Artikel 3 & 6) in der unteren Halterung und einer M8 x 25 mm Schraube mit M8 Unterlegscheibe (Artikel 4 & 7) – siehe Abbildung 3 – sodass der Adventure Sturzbügel lose am Motorrad montiert ist.
- Entfernen Sie die zwei Schrauben an der linken Seite, die in Abbildung 4 gekennzeichnet sind.
- Den linken Adventure Sturzbügel (Artikel 1) am Motorrad anbringen (wie bei der Montage des rechten Sturzbügels).
- Die zwei oberen Halterungen sollten jetzt mit der Motor-Schutzplatte bündig sein.
- Von der linken Seite beginnend, die neue Motorstütz-Schraube (Artikel 5) durch die obere Halterung für den Adventure Sturzbügel, dann durch die Motorstützplatte und die Halterung für den rechten Adventure Sturzbügel– siehe Abbildungen 5 und 6.
- Die selbstsichernde Mutter (Artikel 8) am Ende der Motorhalterstange anbringen – siehe Abbildung 7.
- Mit einem Inbusschlüssel und einem entsprechenden Steckschlüssel, die selbstsichernde Mutter befestigen (bitte darauf achten, dass das Gewinde komplett eingerastet ist / das richtige Anzugsdrehmoment verwendet wurde).
- Ziehen Sie die vier Montageschrauben an den unteren und mittleren Halterungen an beiden Seiten des Motorrades mit dem empfohlenen Anzugsdrehmoment fest.
- Überprüfen Sie, dass die Sturzbügel sicher befestigt sind und alle Schrauben mit dem richtigen Anzugsdrehmoment festgezogen wurden.
- Montieren Sie die 5 Plastikkappen (Artikel 9 & 10) an den Montageschrauben wie in Abbildung 8 abgebildet.

R&G

Unit 1, Shelley's Lane, East Worldham, Alton, Hampshire, GU34 3AQ

Tel: +44 (0)1420 89007 Fax: +44 (0)1420 87301 www.rg-racing.com Email: info@rg-racing.com



AUSGABE 1 05/09/18 (DM)

CONSUMER NOTICE

The catalogue description and any exhibition of samples are only broad indications of the Products and R&G may make design changes which do not diminish their performance or visual appeal and supplying them in such state shall conform to the order. The Buyer acknowledges no representation or warranty (other than as to title) has been given or will apply to the Products other than those in R&G's order or confirmation and the Buyer confirms it has chosen the Products as being of merchantable quality and suitable for its particular purposes. Where R&G fits the Products or undertakes other services it shall exercise reasonable skill and care and rectify any fault free of charge unless the workmanship has been disturbed. The Buyer is responsible for ensuring that the warranty on the motorcycle is not affected by the fitting of the Products. On return of any defective Products R&G shall at its option either supply a replacement or refund the purchase money but shall not be liable if the Products have been modified or used or maintained otherwise than in accordance with R&G's or manufacturer's instructions and good engineering practice or if the defect arises from accident or neglect. Other than identified above and subject to R&G not limiting its liability for causing death and personal injury, it shall not be liable for indirect or consequential loss and otherwise its liability shall be limited to the amounts paid by the Buyer for the Products or the fitting or service concerned. These terms do not affect the Buyer's statutory rights.

R&G RETURNS POLICY (NON-FAULTY GOODS)

Returns must be pre-authorized (if not pre-authorized the return will be rejected). Goods may only be returned direct to us if they were purchased direct from us (customer must prove if necessary). Otherwise to be returned to original vendor. Goods must be in re-sellable condition, in the opinion of R&G. All returns are subject to a 25% restocking and handling fee (25% of the gross value exc. P&P – at the prevailing price at time of purchase). The customer must pay any and all carriage charges. No returns of discontinued products, unless within 14 days of purchase. This policy does not affect your statutory rights and does not refer to faulty goods.

R&G

Unit 1, Shelley's Lane, East Worldham, Alton, Hampshire, GU34 3AQ

Tel: +44 (0)1420 89007 Fax: +44 (0)1420 87301 www.rg-racing.com Email: info@rg-racing.com