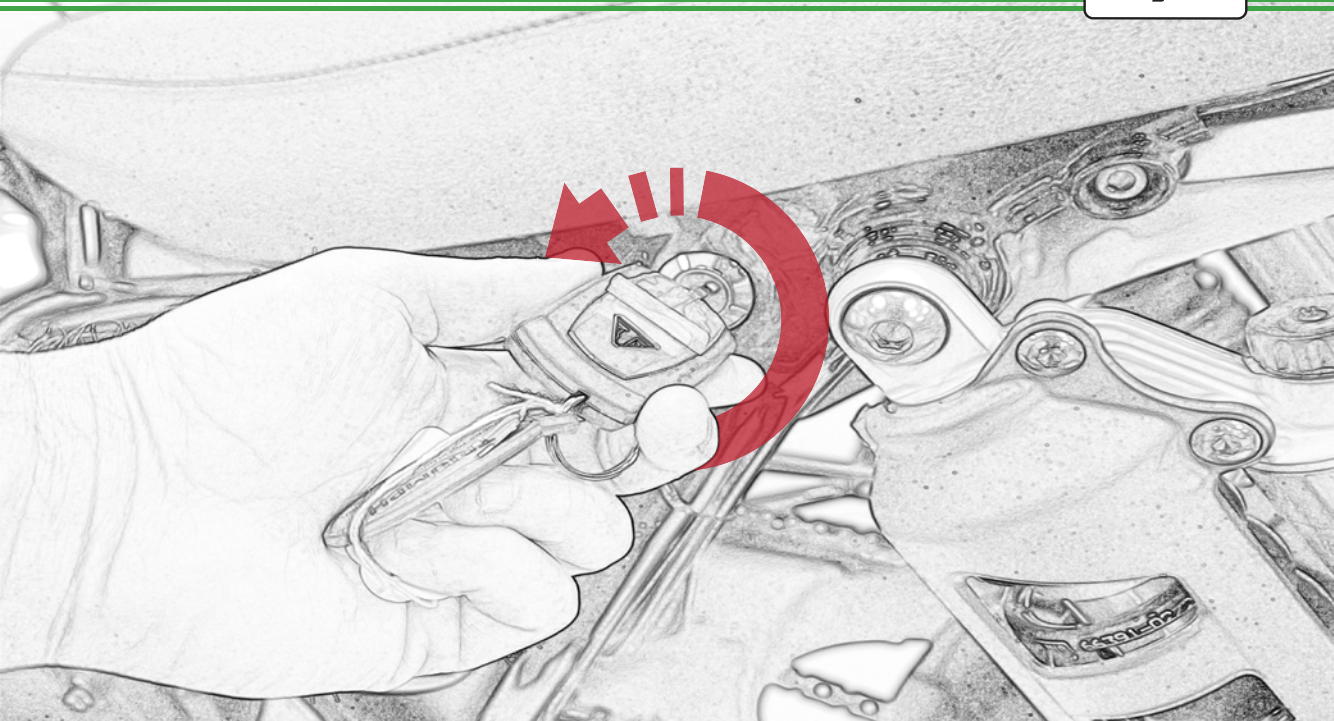
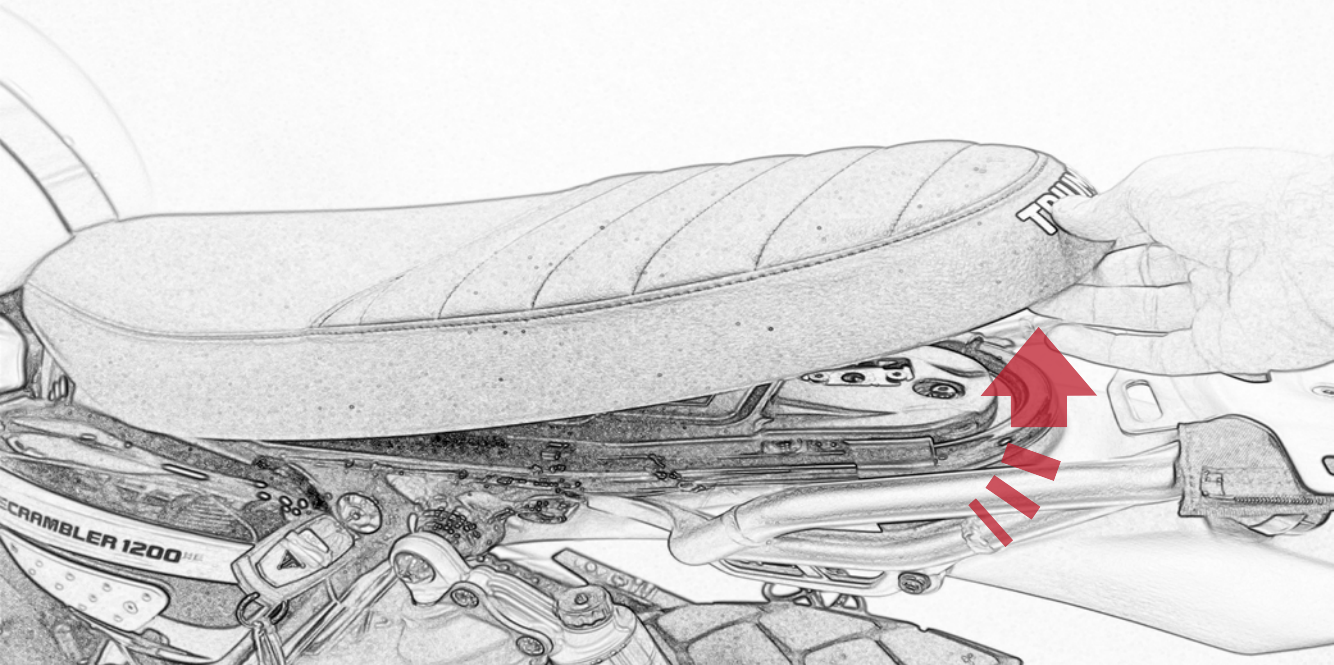


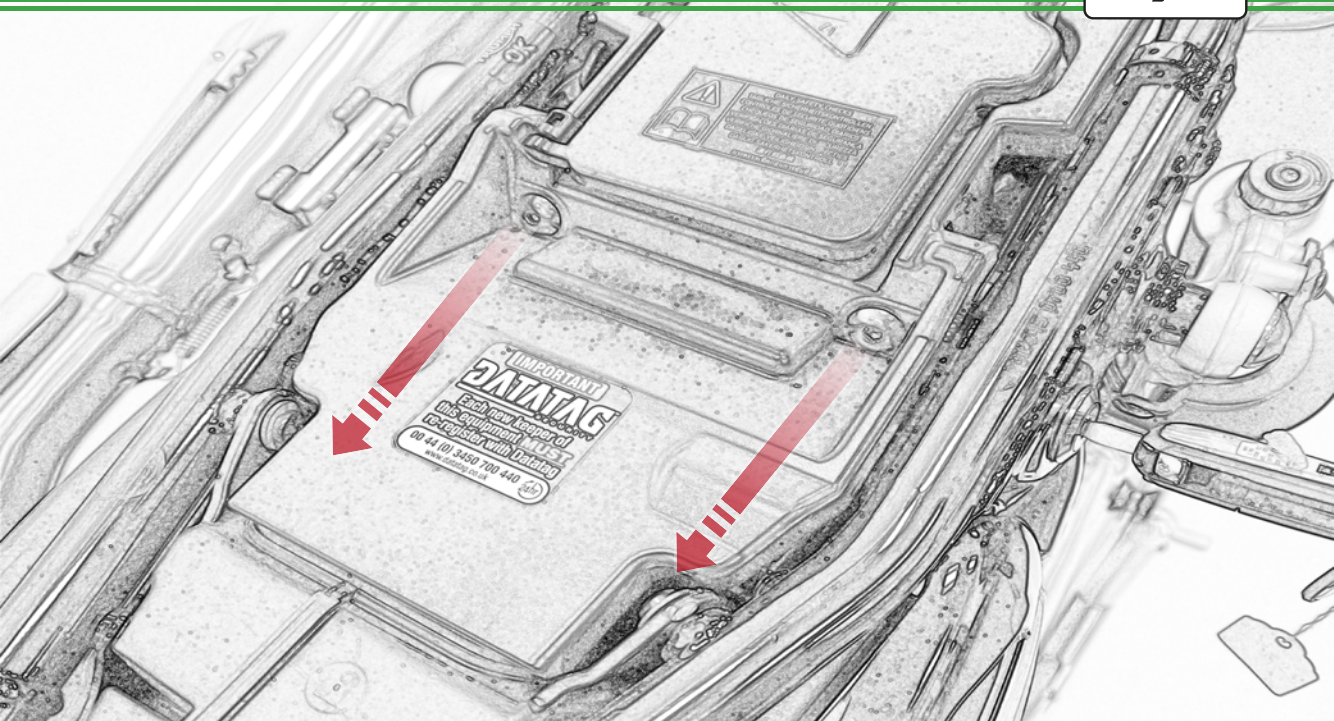


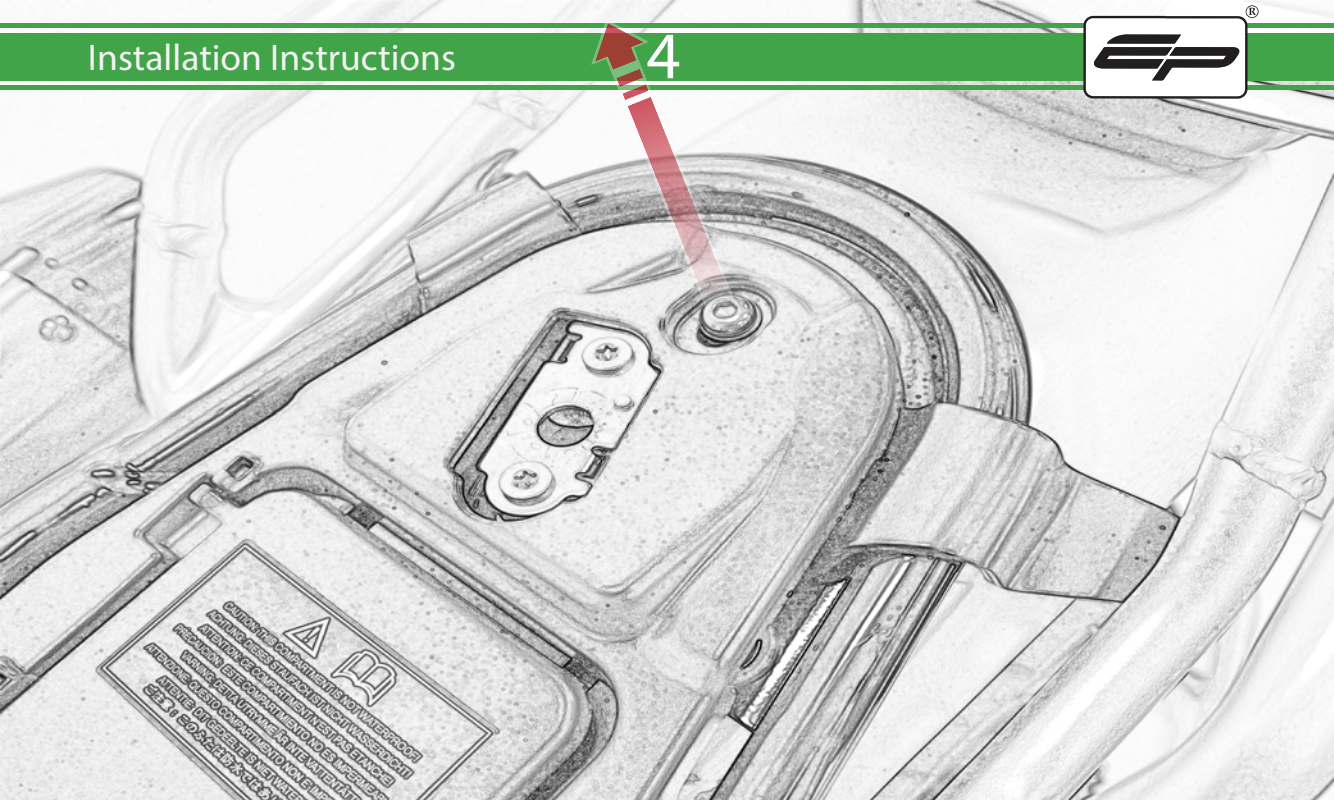
## Kit Contents PRN014766

- (A) 1 x EP Connector Type 10
- (B) 1 x Led Number Plate Light
- (C) 1 x Neoprene
- (D) 1 x Number Plate Light Block
- (E) 1 x Undertray
- (F) 1 x Main Bracket
- (G) 1 x Short Spacer
- (H) 1 x Longer Spacer
- (I) 2 x M4 x 12 Button Head Bolts
- (J) 2 x M4 x 25 Screws
- (K) 2 x M4 Flange Nuts
- (L) 4 x M6 Flange Nuts
- (M) 4 x M6 x 20 Button Head Bolts
- (N) 4 x M6 x 35 Button Head Bolts

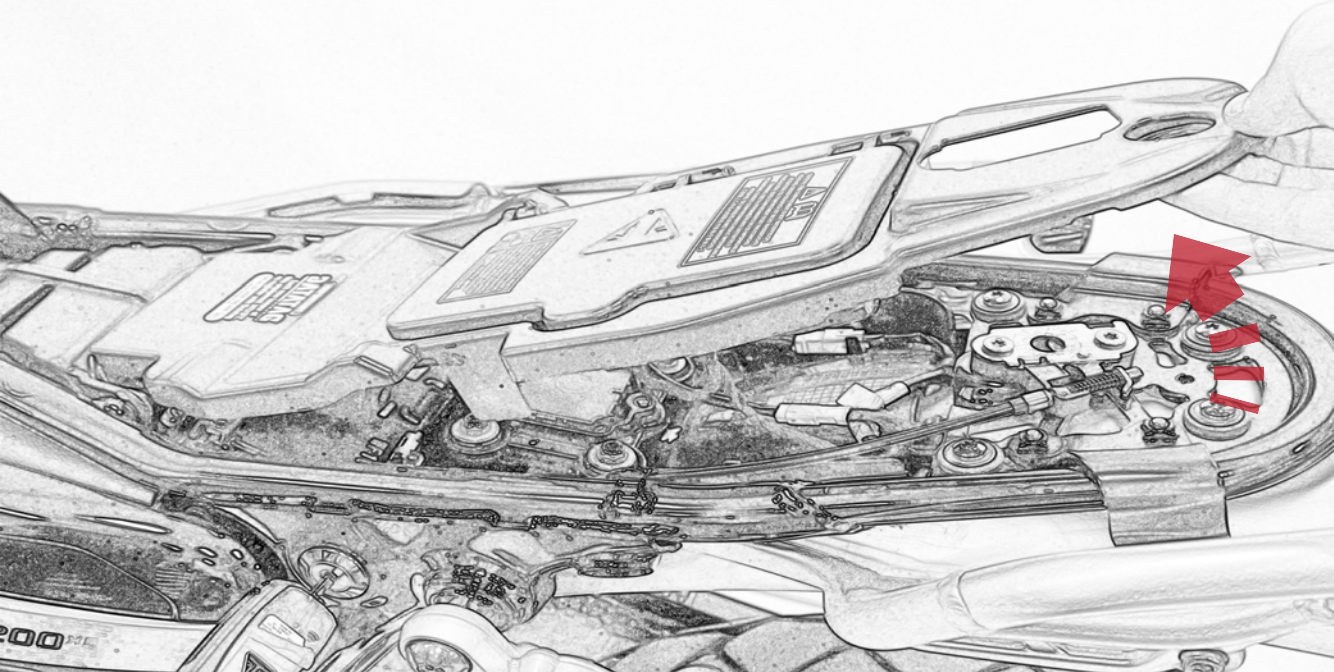


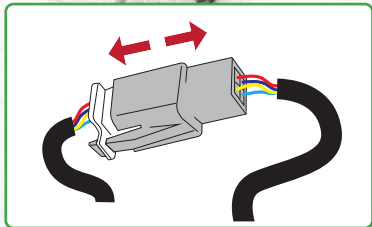
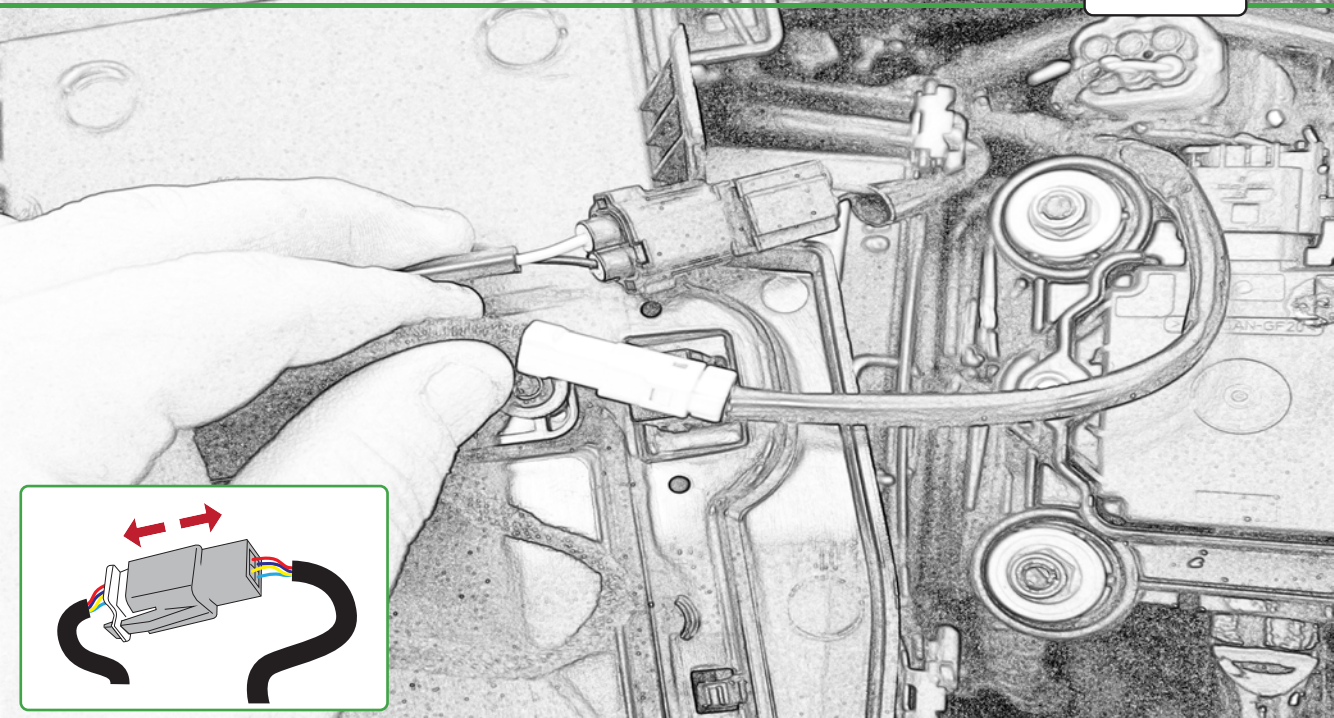






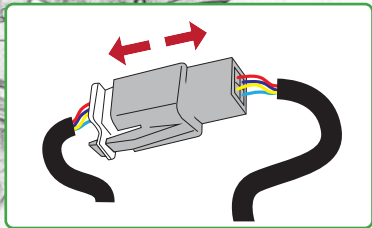
   
CAUTION: THIS COMPARTMENT IS NOT WATERPROOF.  
ATTENZIONE: QUESTO COMPARTIMENTO NON È STANDEBROOFT.  
PRECAUTION: THIS COMPARTMENT IS NOT WATERPROOF.  
AVVERTENZA: QUESTO COMPARTIMENTO NON È STANDEBROOFT.  
ATTENTION: CE COMPARTIMENT N'EST PAS ÉTANDEBROOFT.  
PRECAUTION: ESTE COMPARTIMENTO NÃO É ÀPROOF.  
ATTENZIONE: ESTE COMPARTIMENTO NÃO É ÀPROOF.  
ATTENZIONE: ESTE COMPARTIMENTO NÃO É ÀPROOF.  
ATTENZIONE: ESTE COMPARTIMENTO NÃO É ÀPROOF.

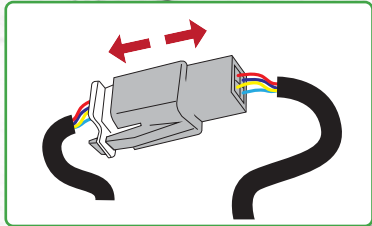


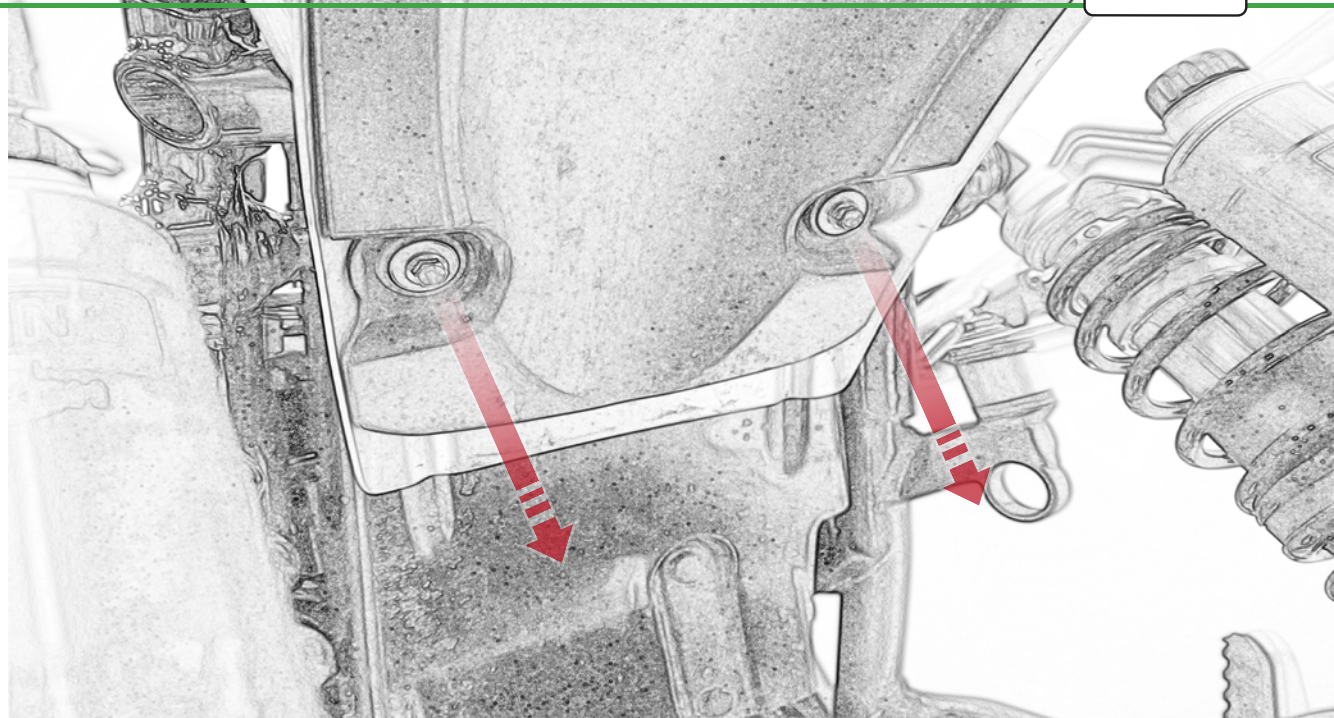


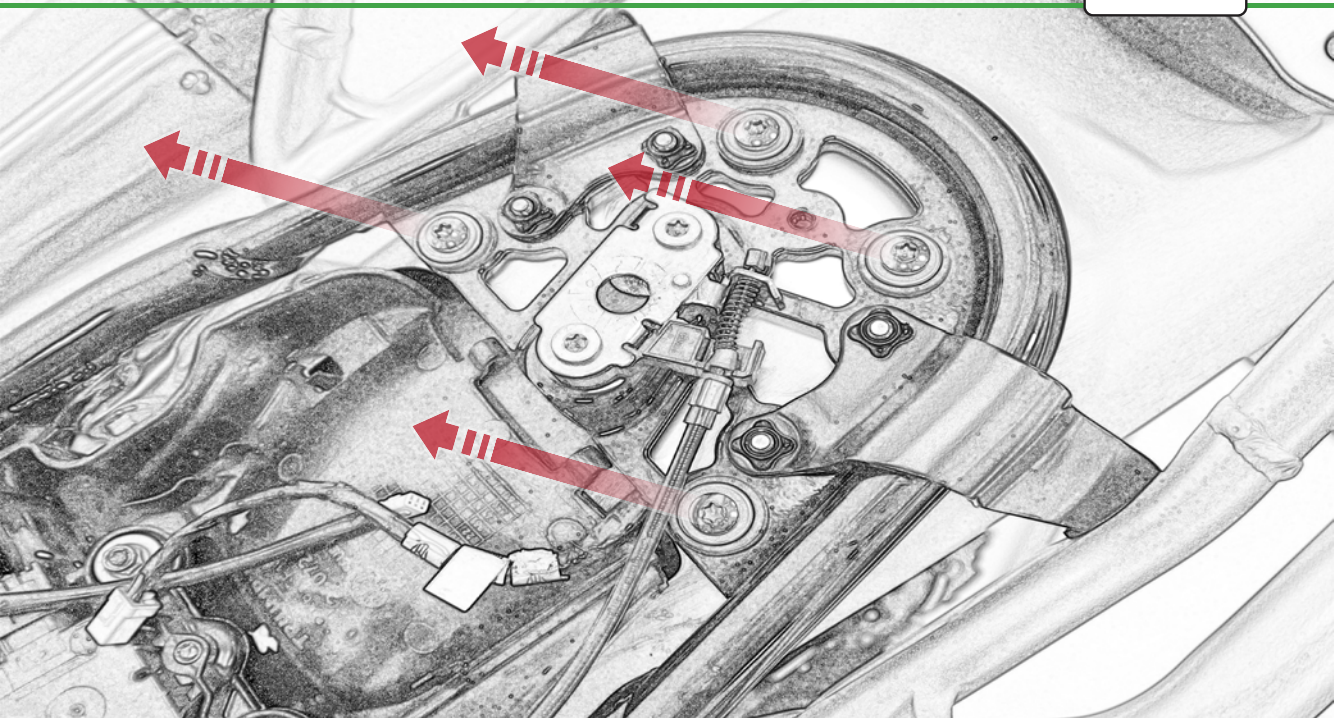


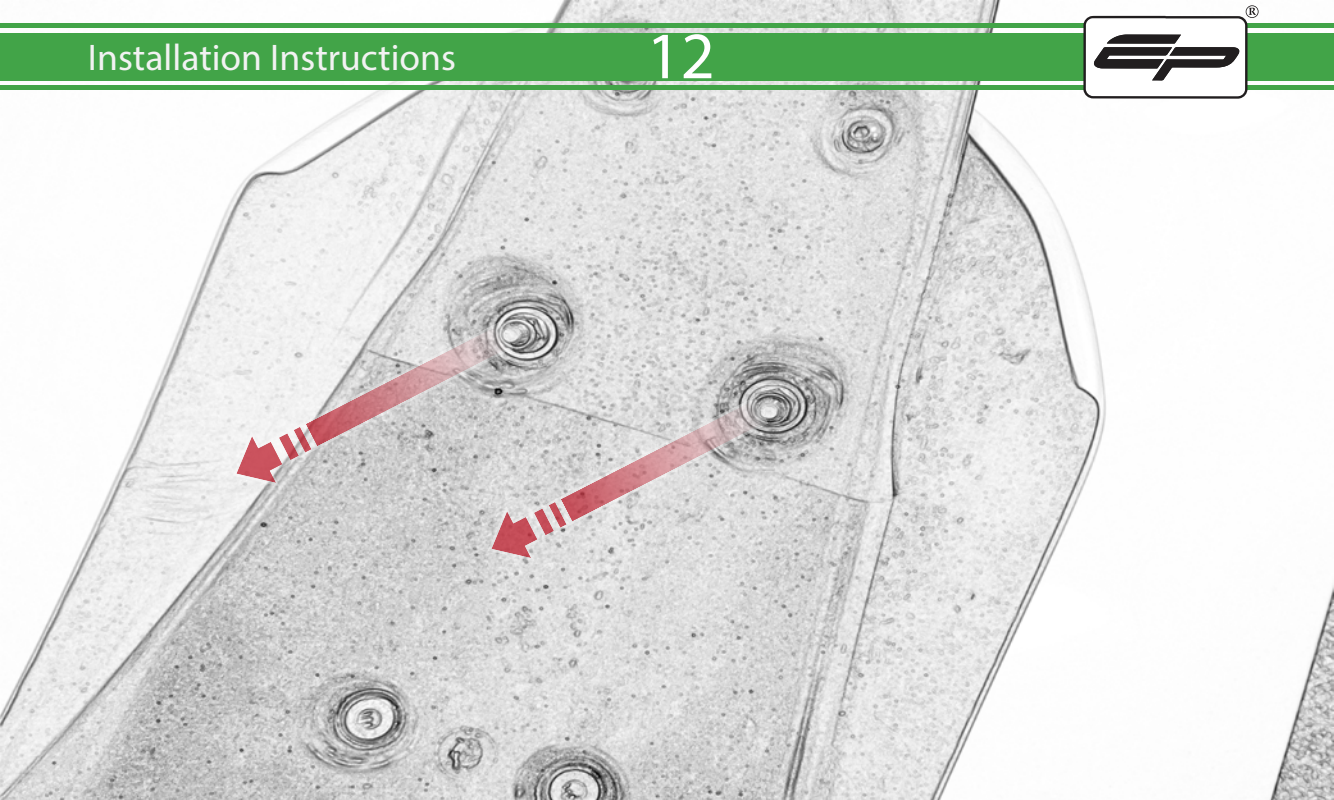


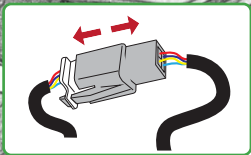
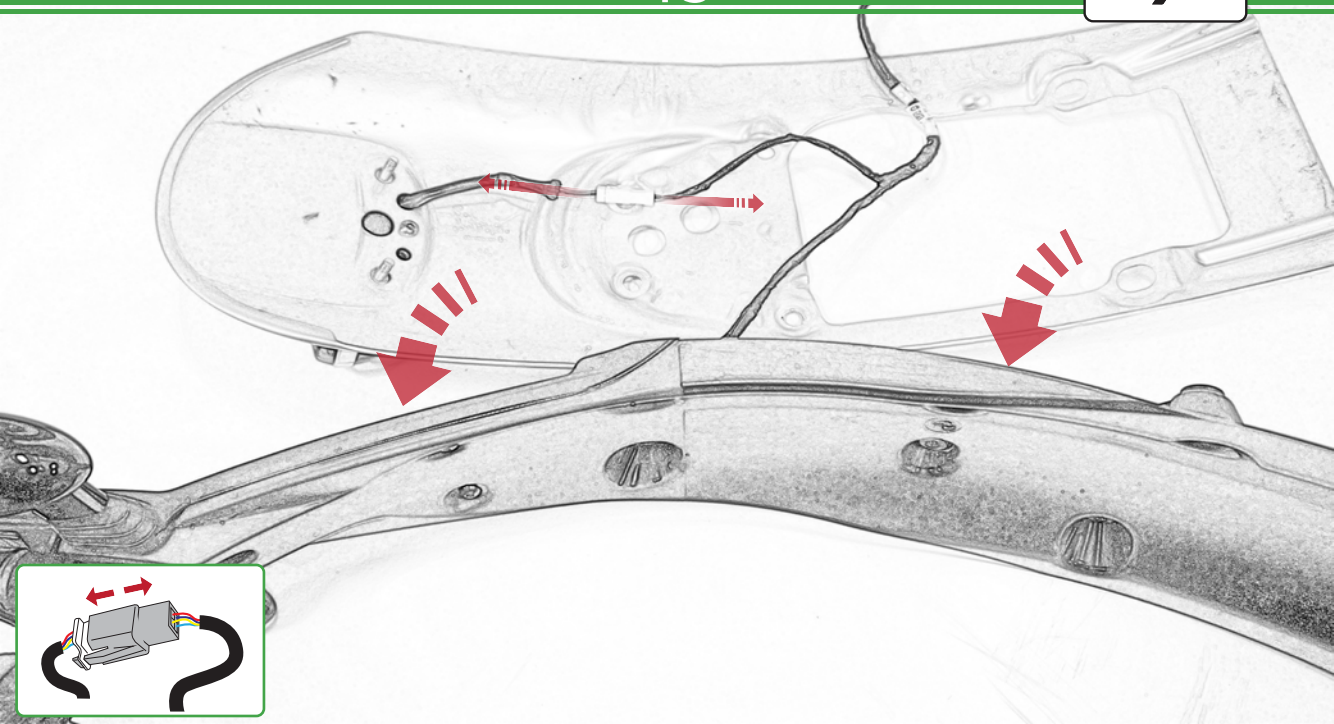


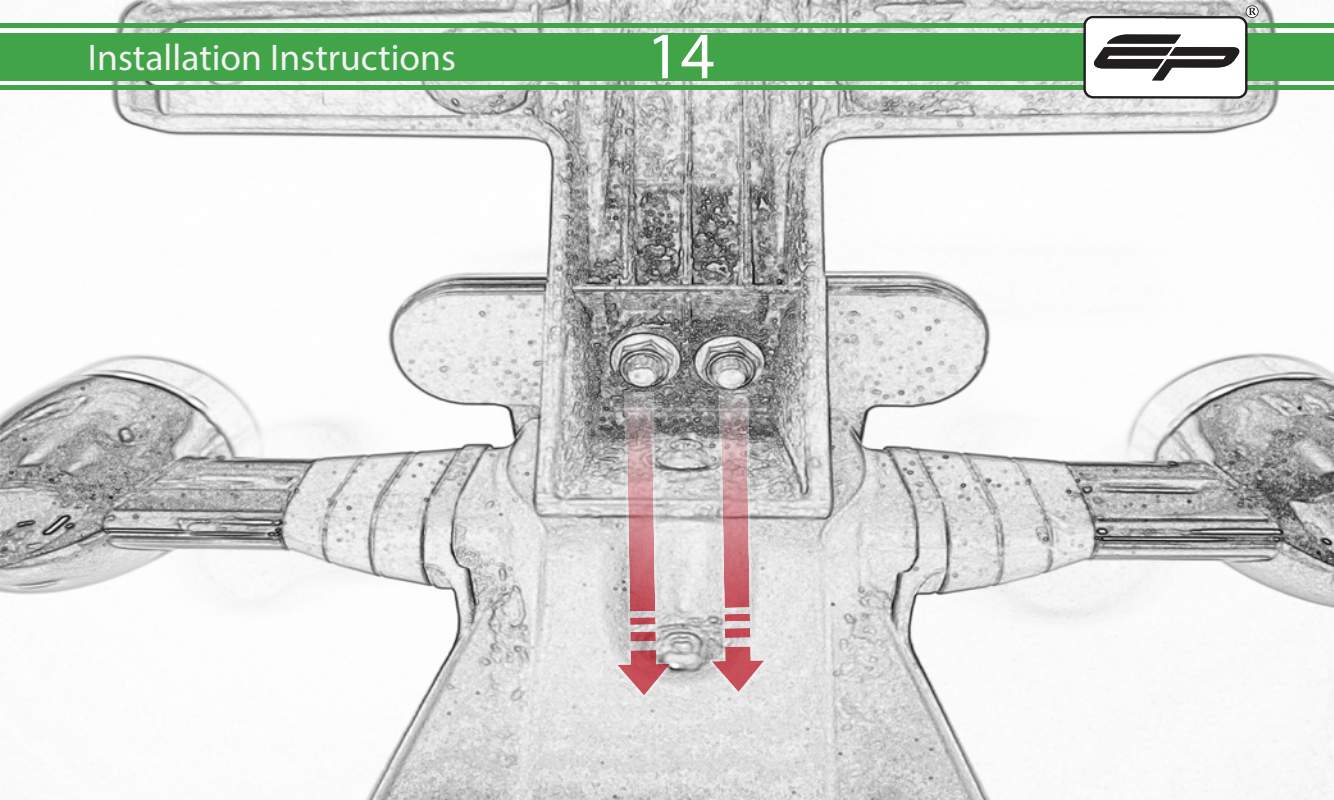


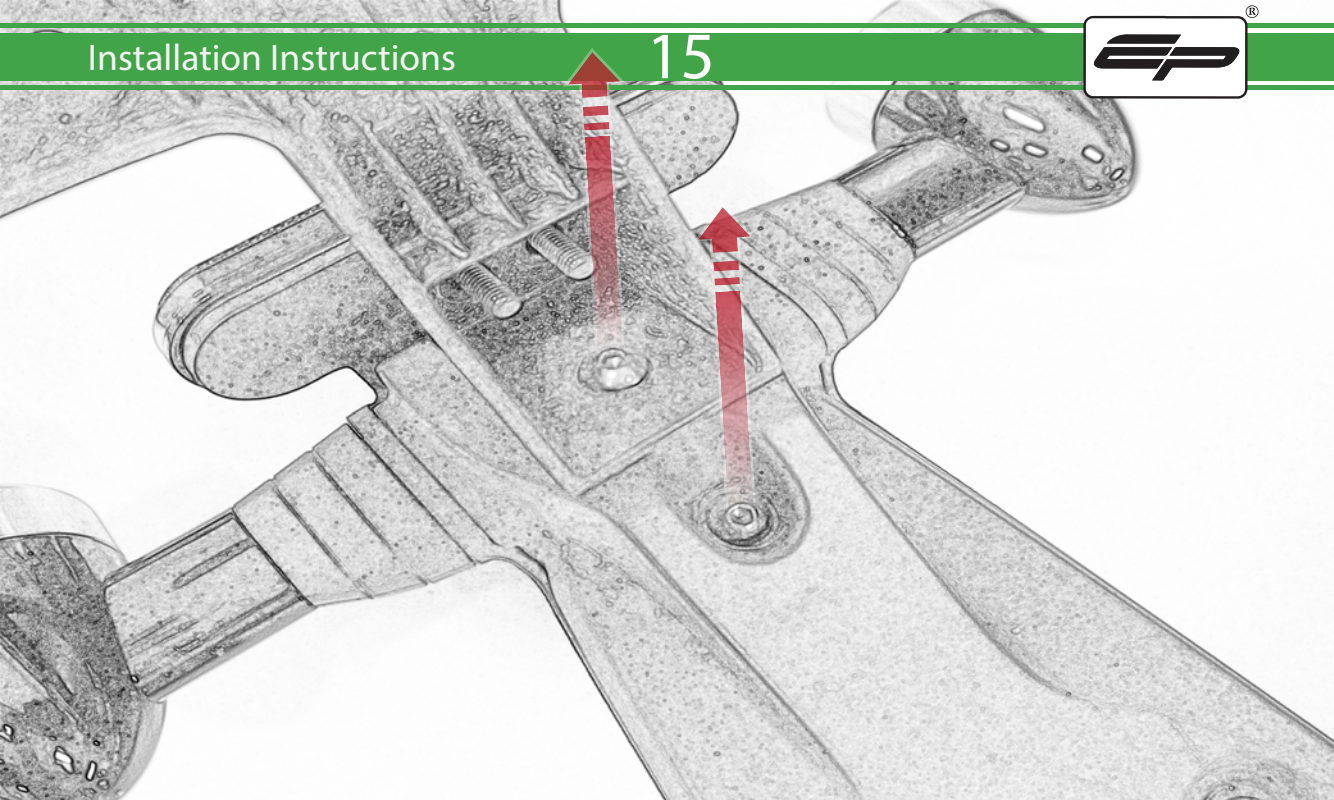




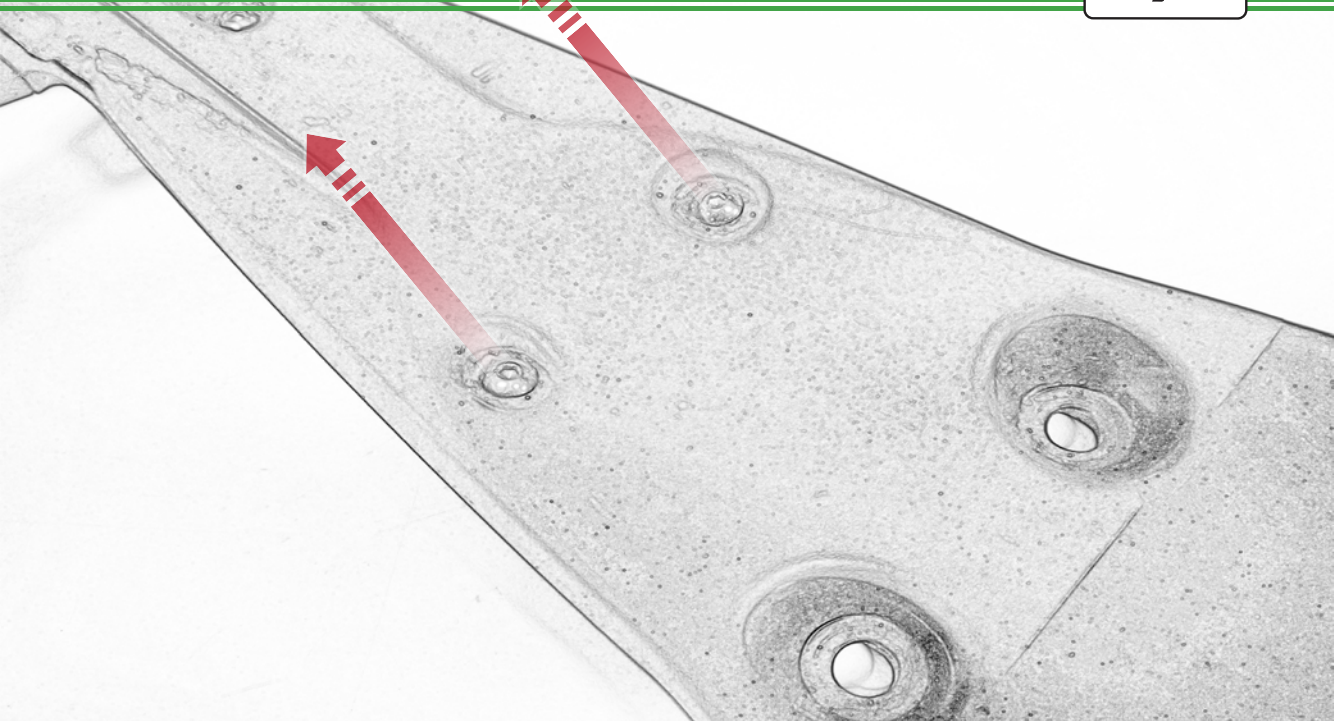


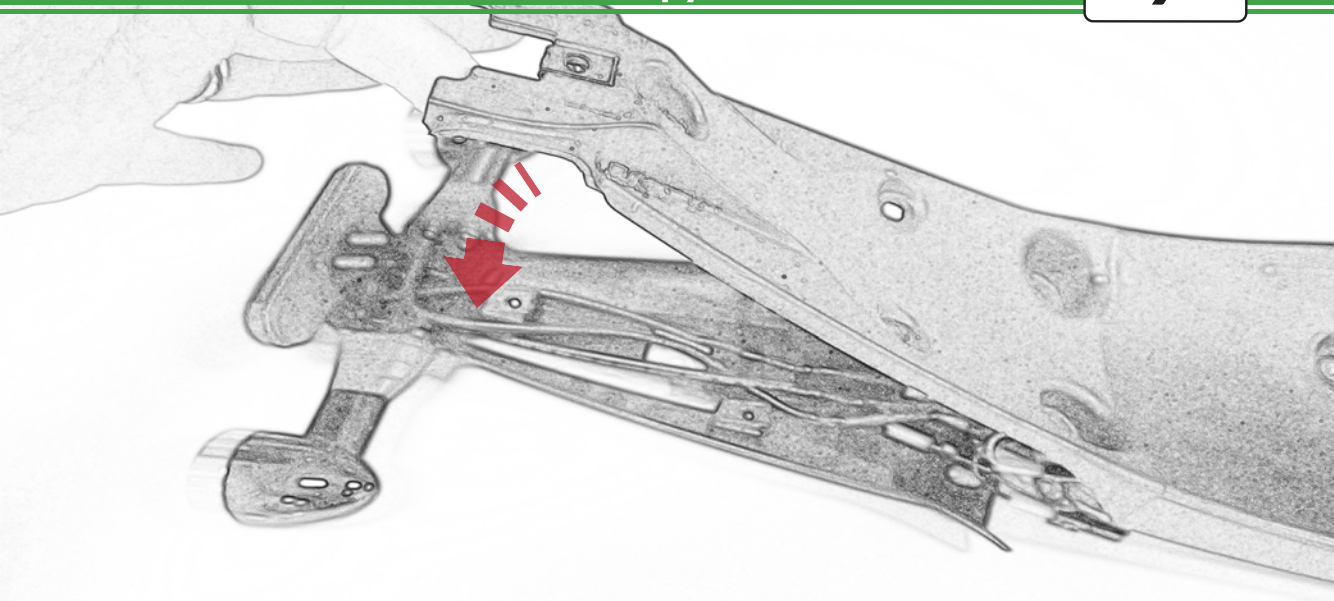


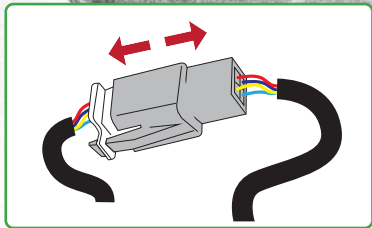
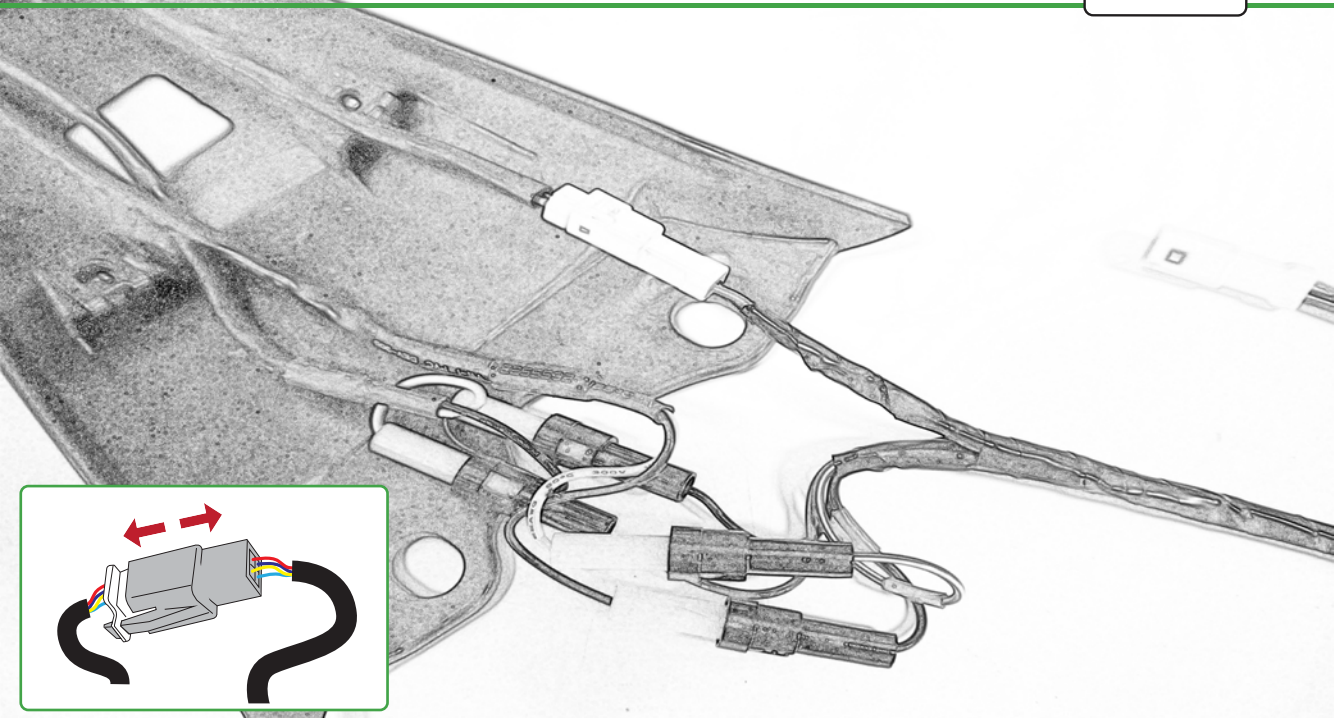


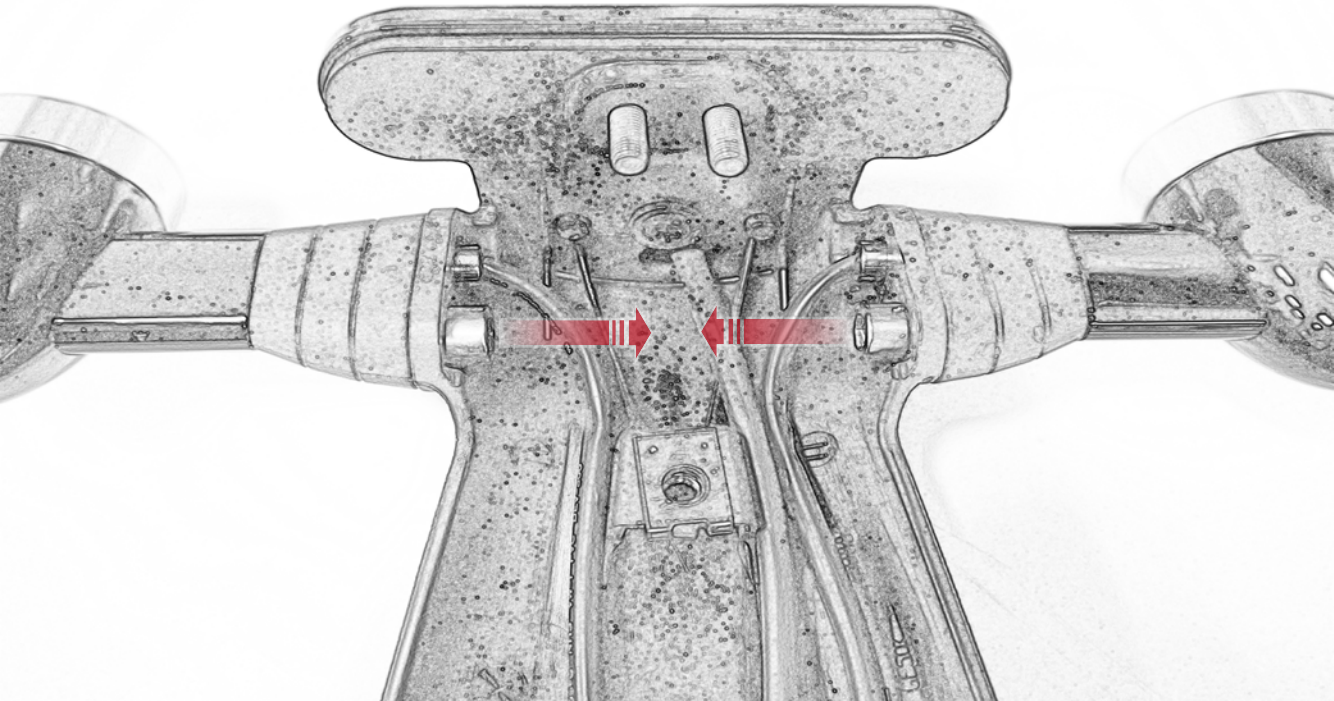


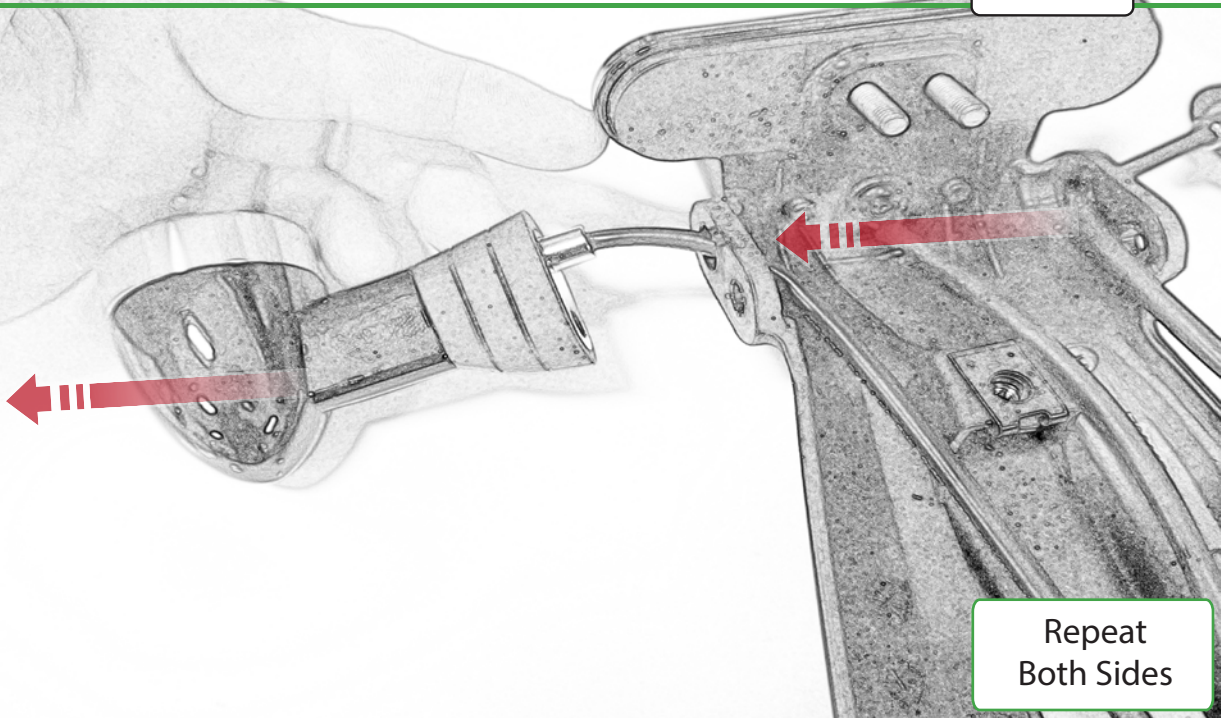








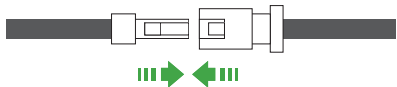
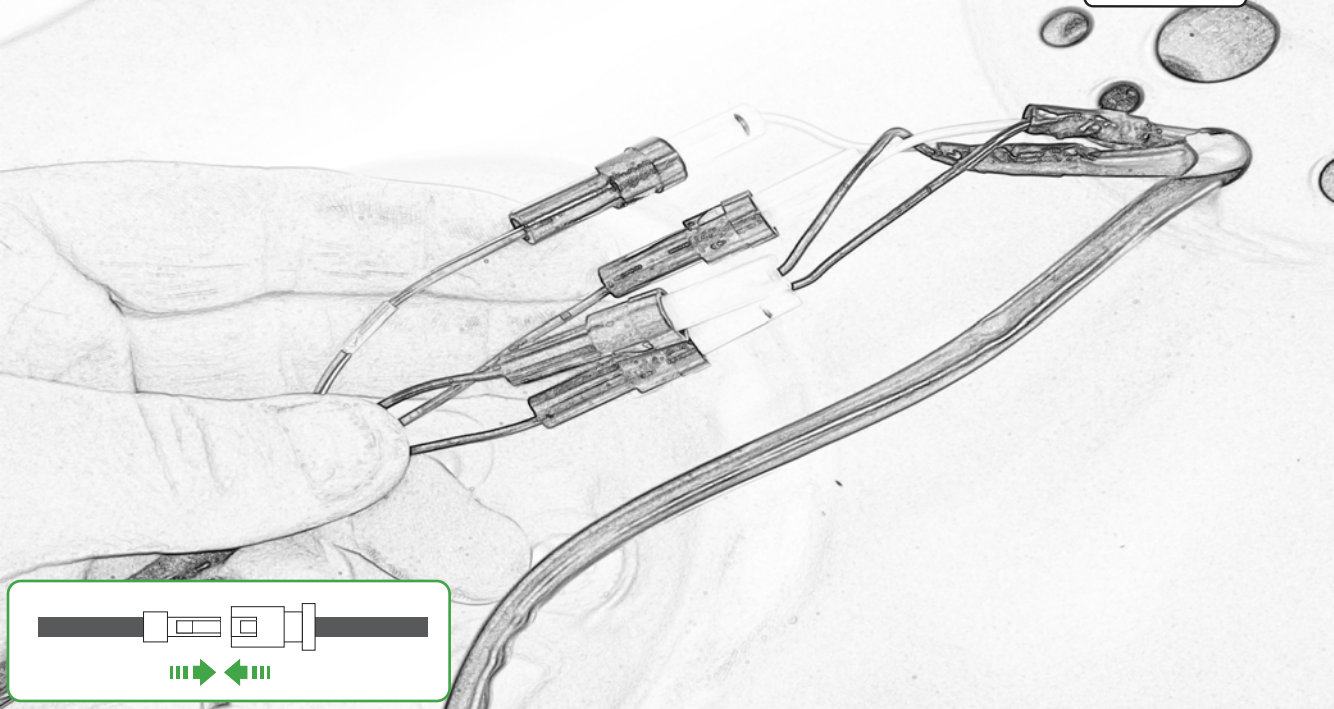


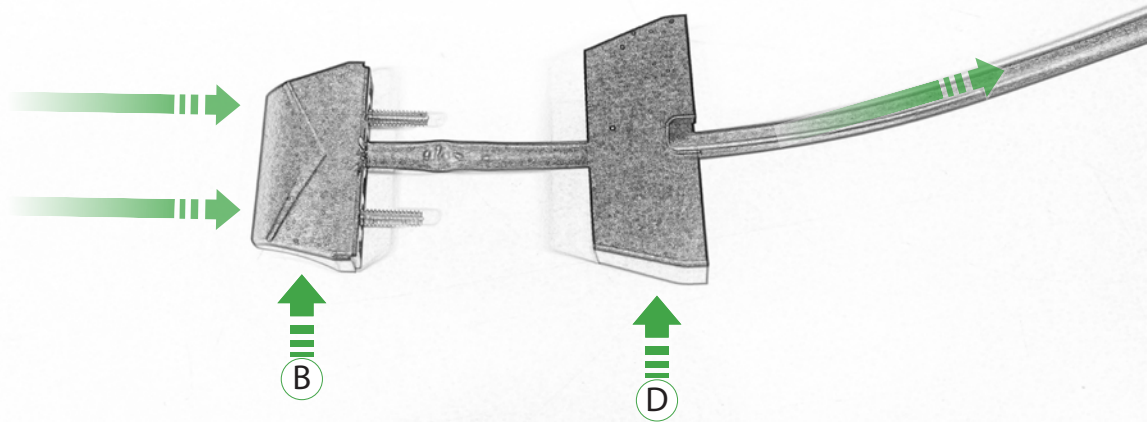


Repeat  
Both Sides

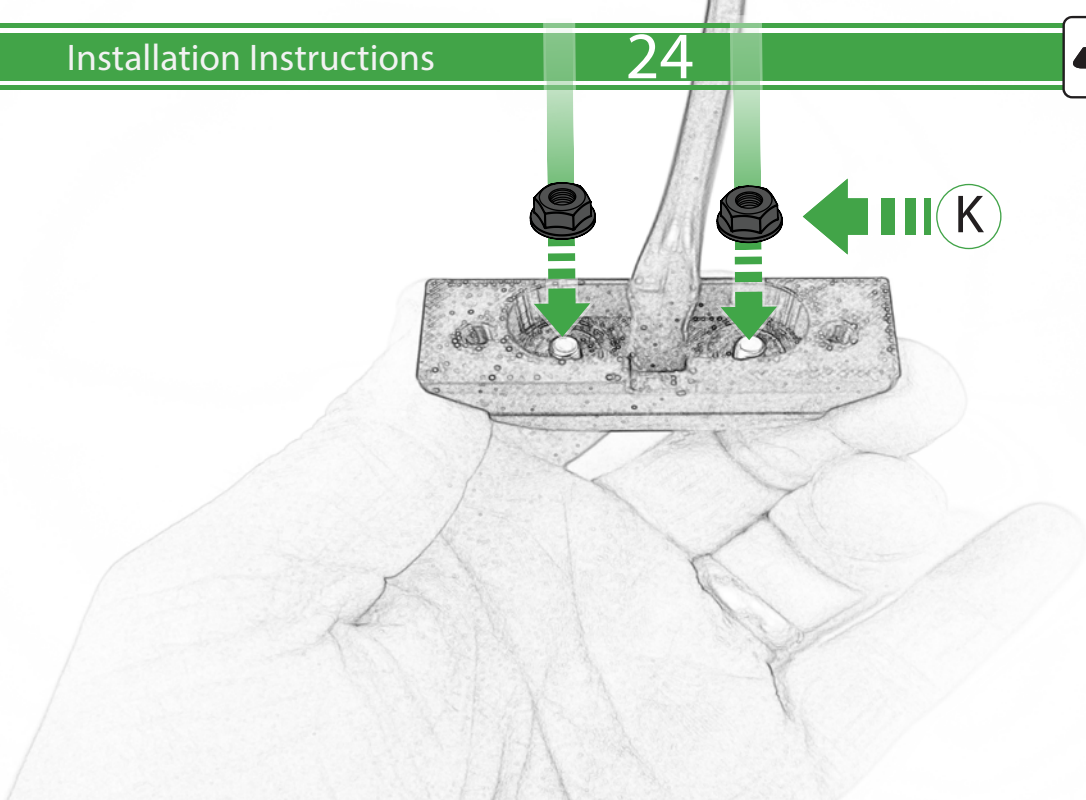


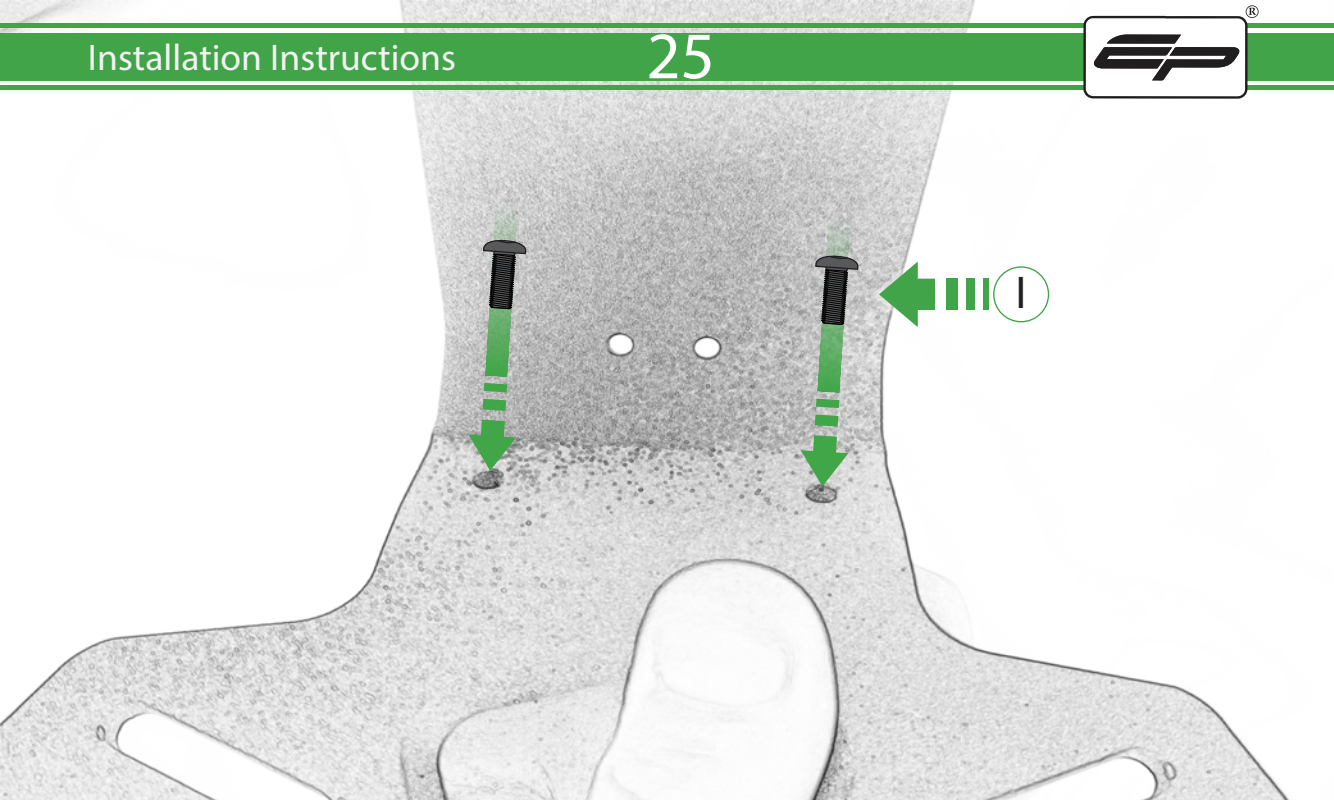
Install A9700145  
Relocation Kit

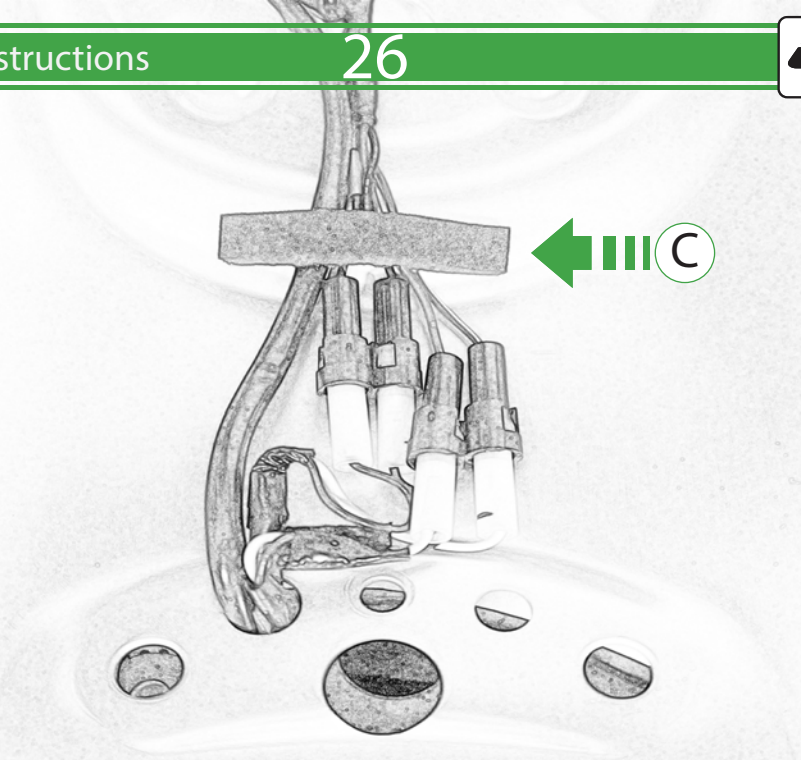




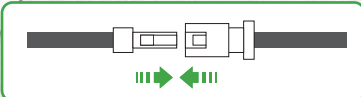
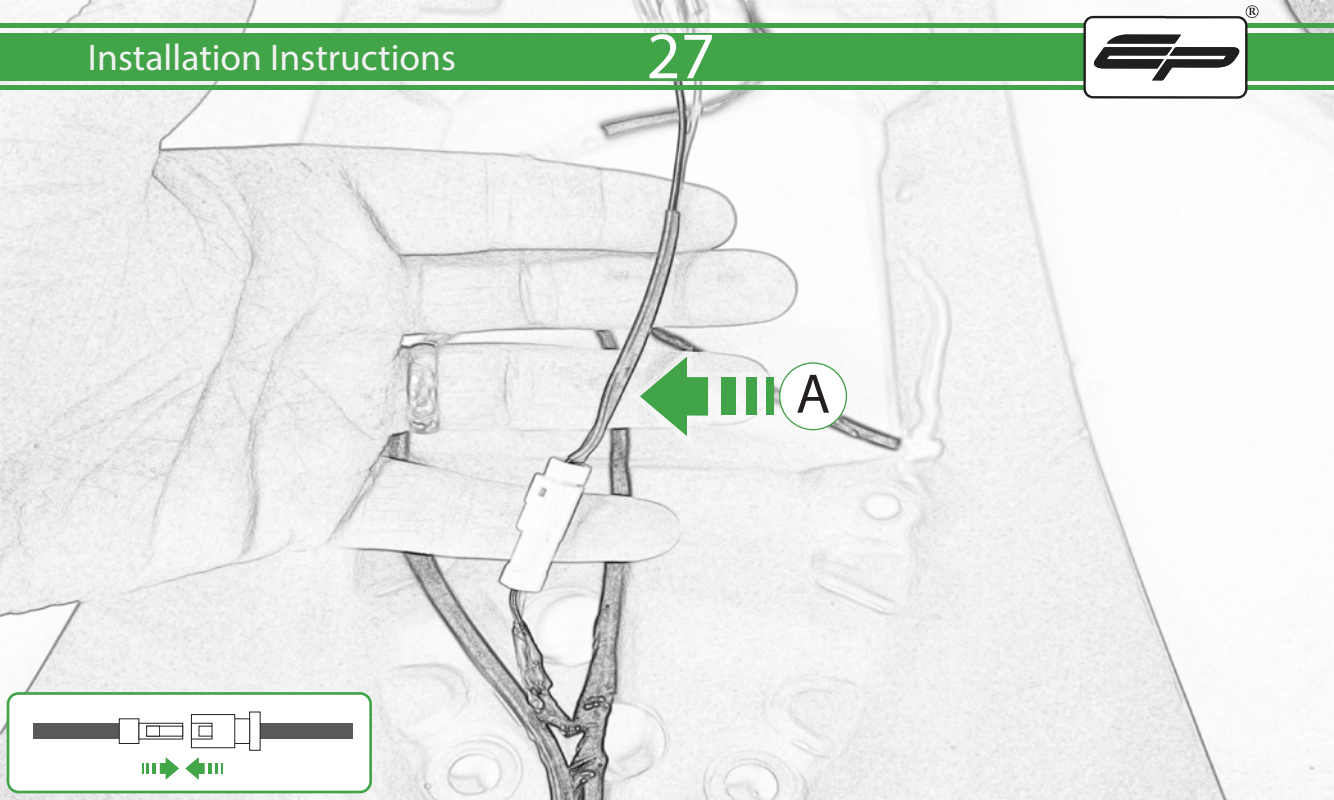


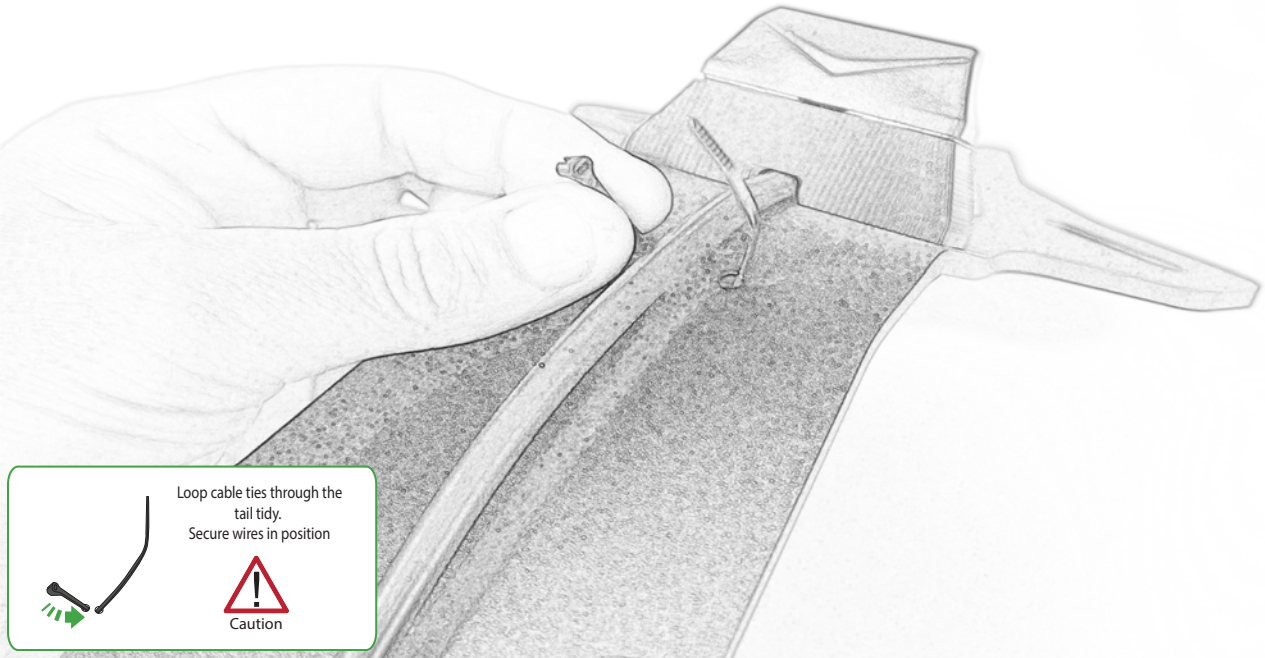






← C

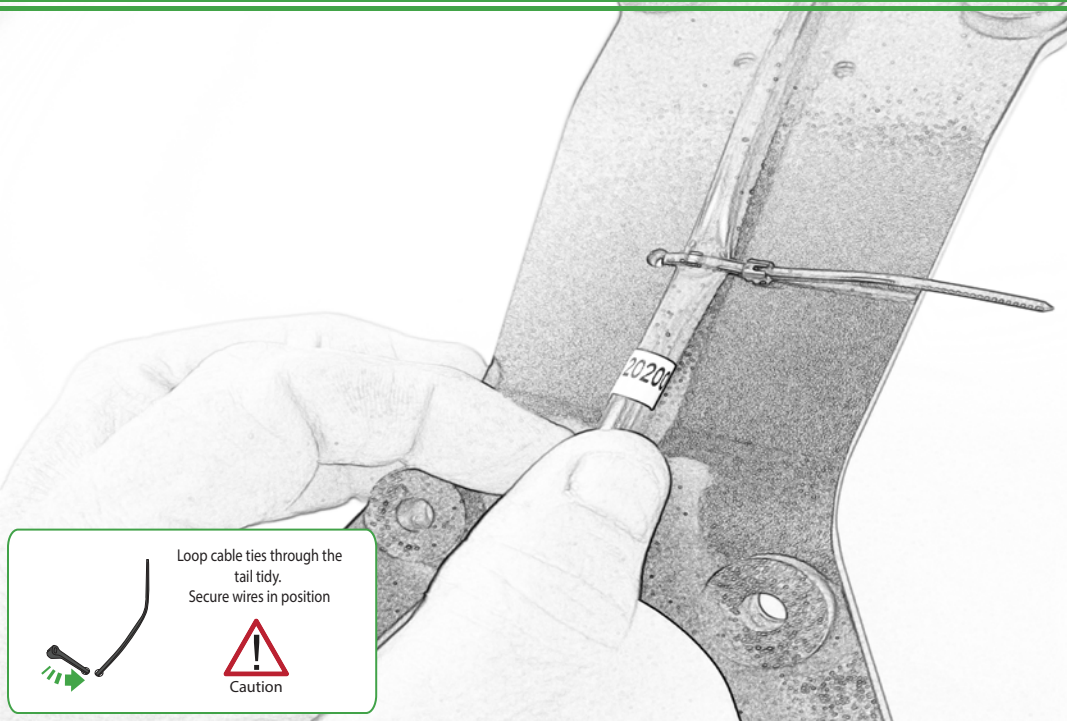




Loop cable ties through the  
tail tidy.  
Secure wires in position



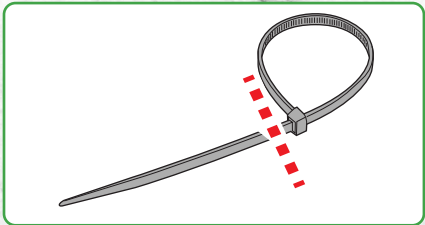
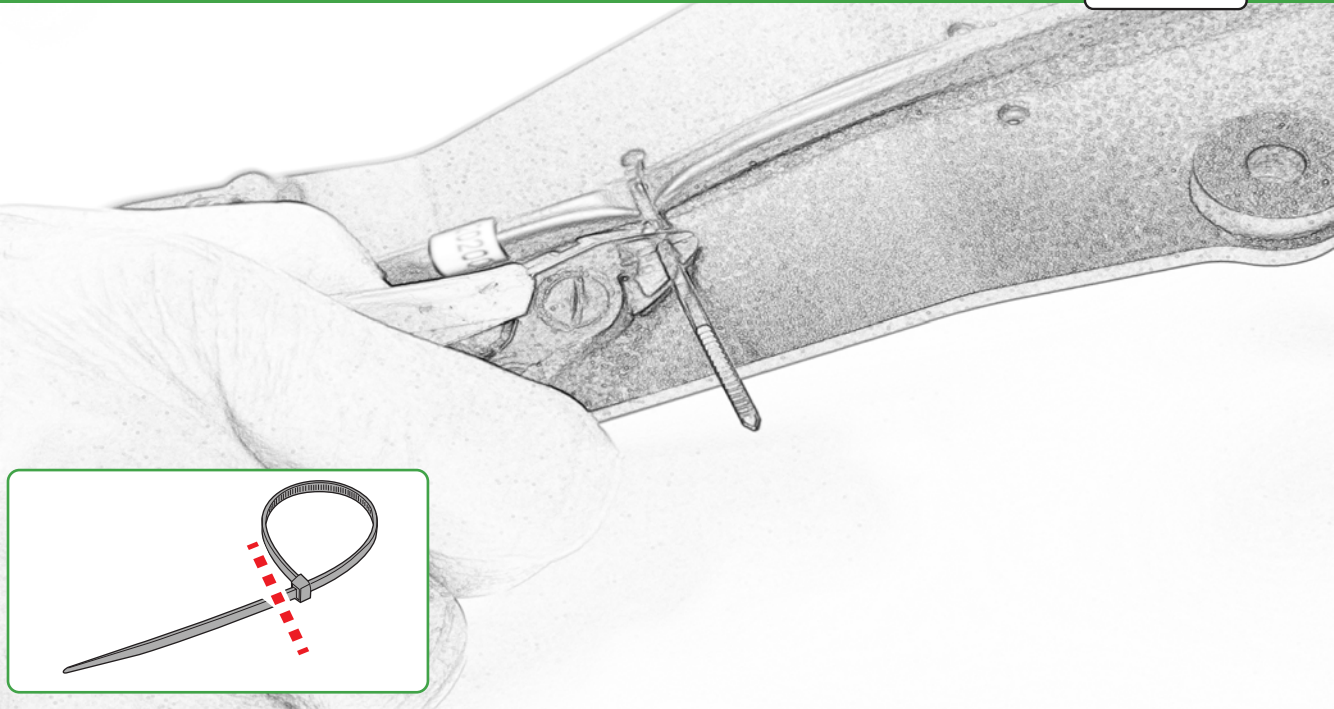
Caution

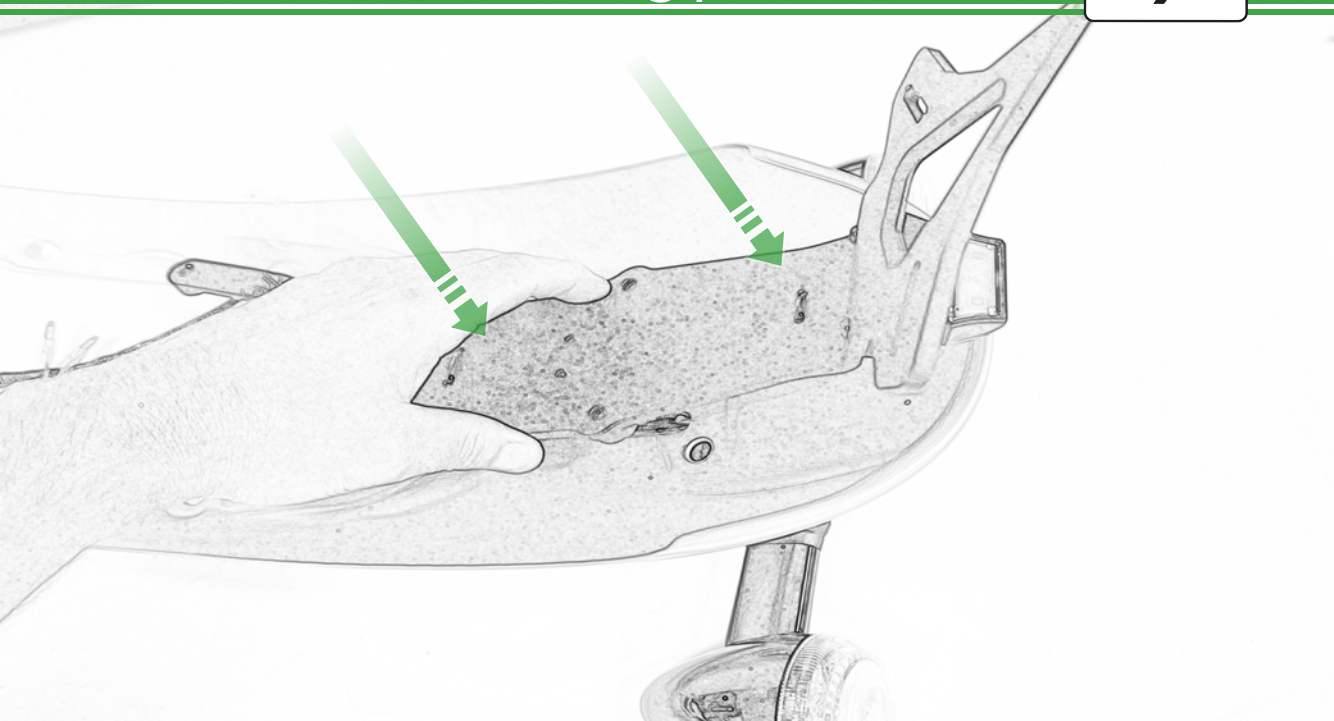


Loop cable ties through the tail tidy.  
Secure wires in position

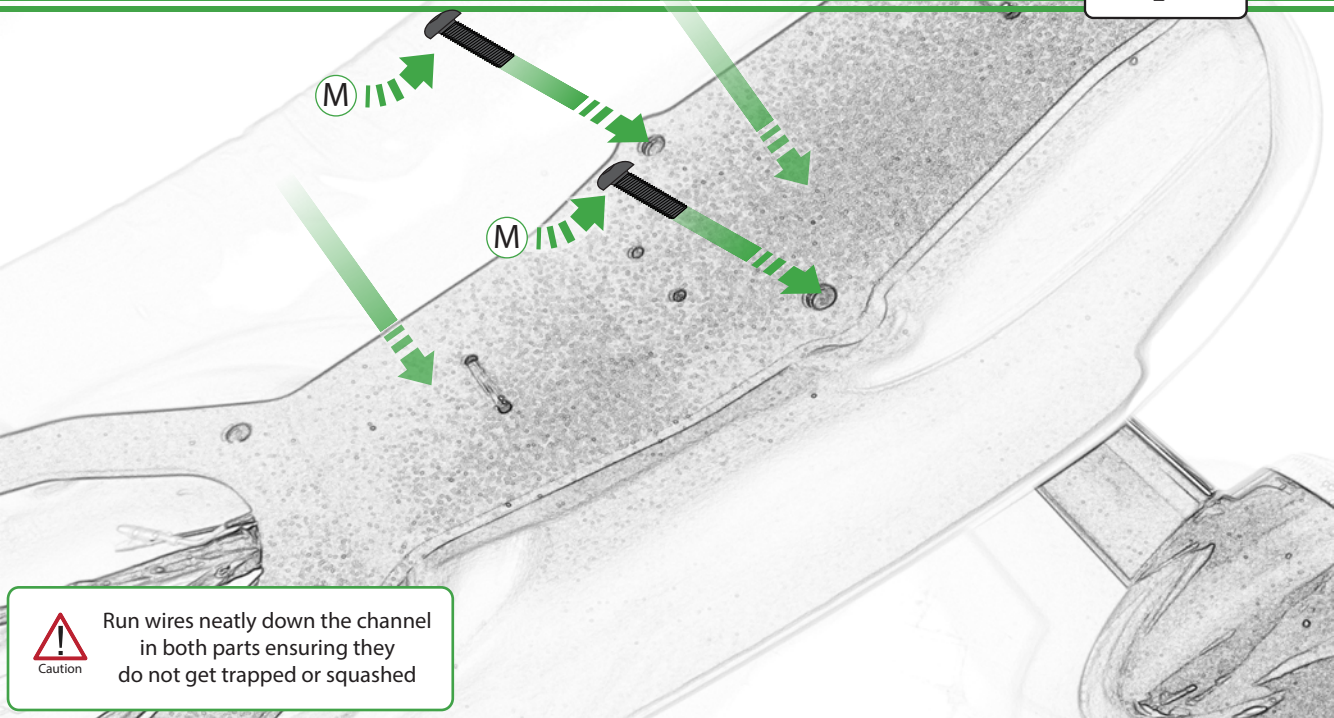


Caution



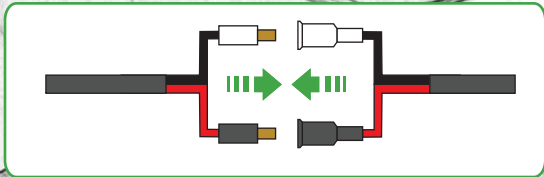
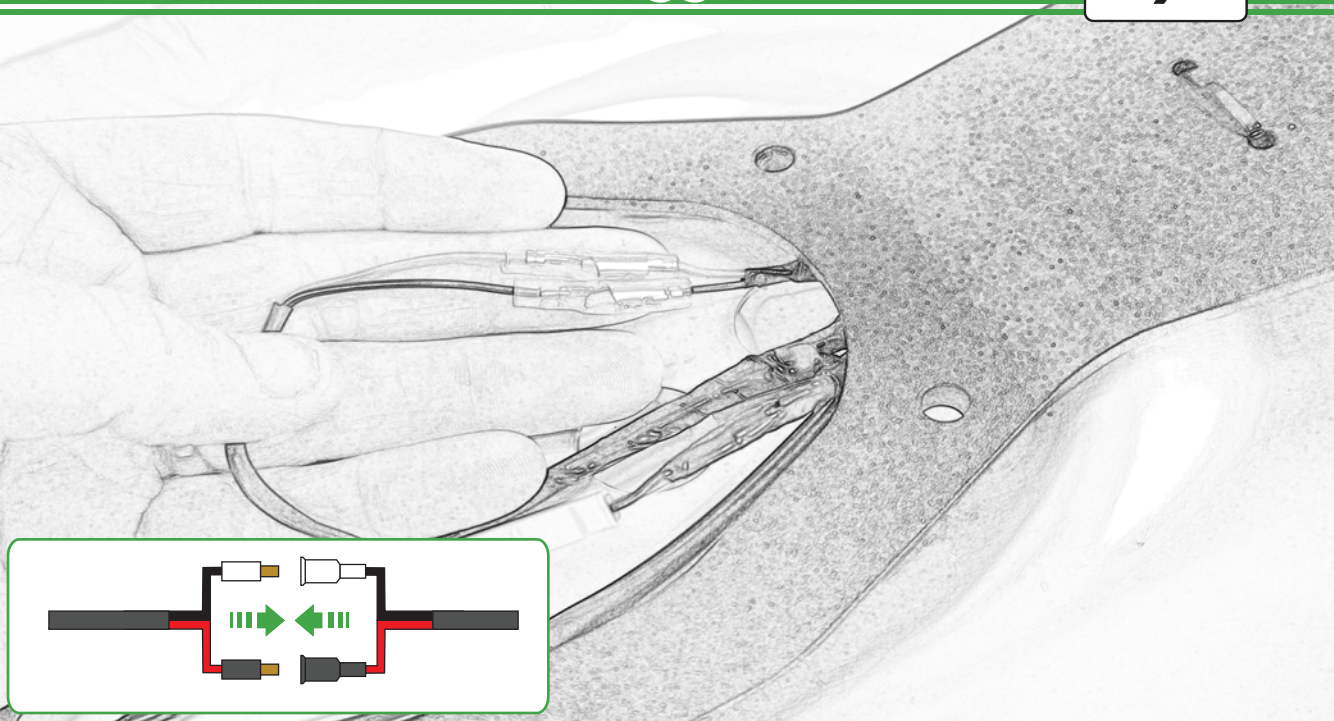


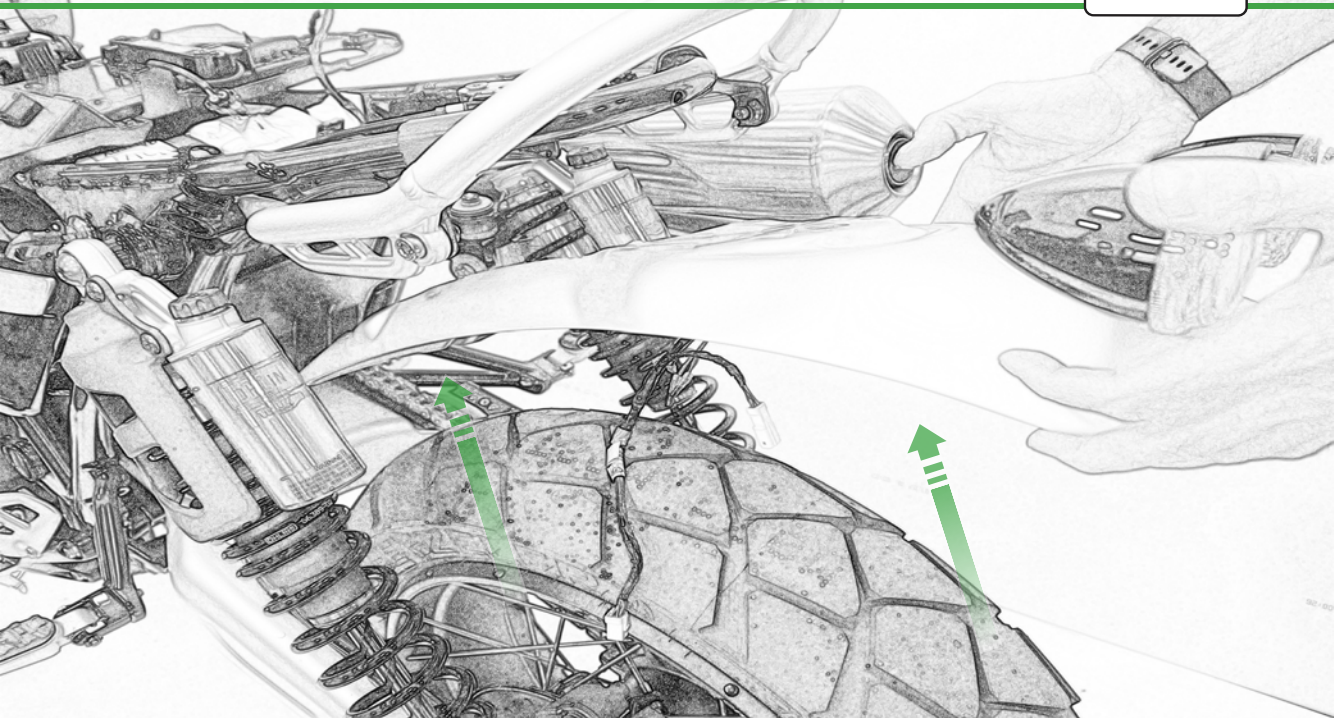


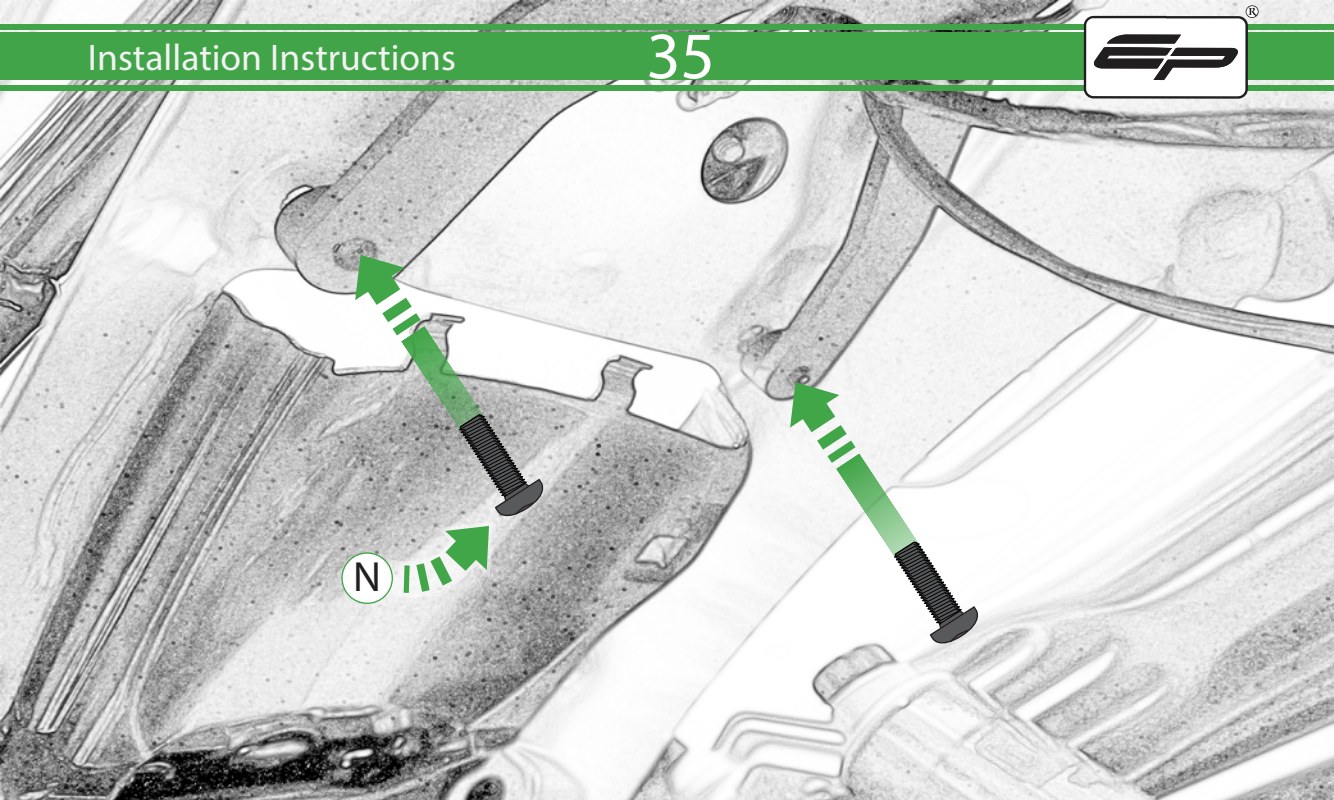


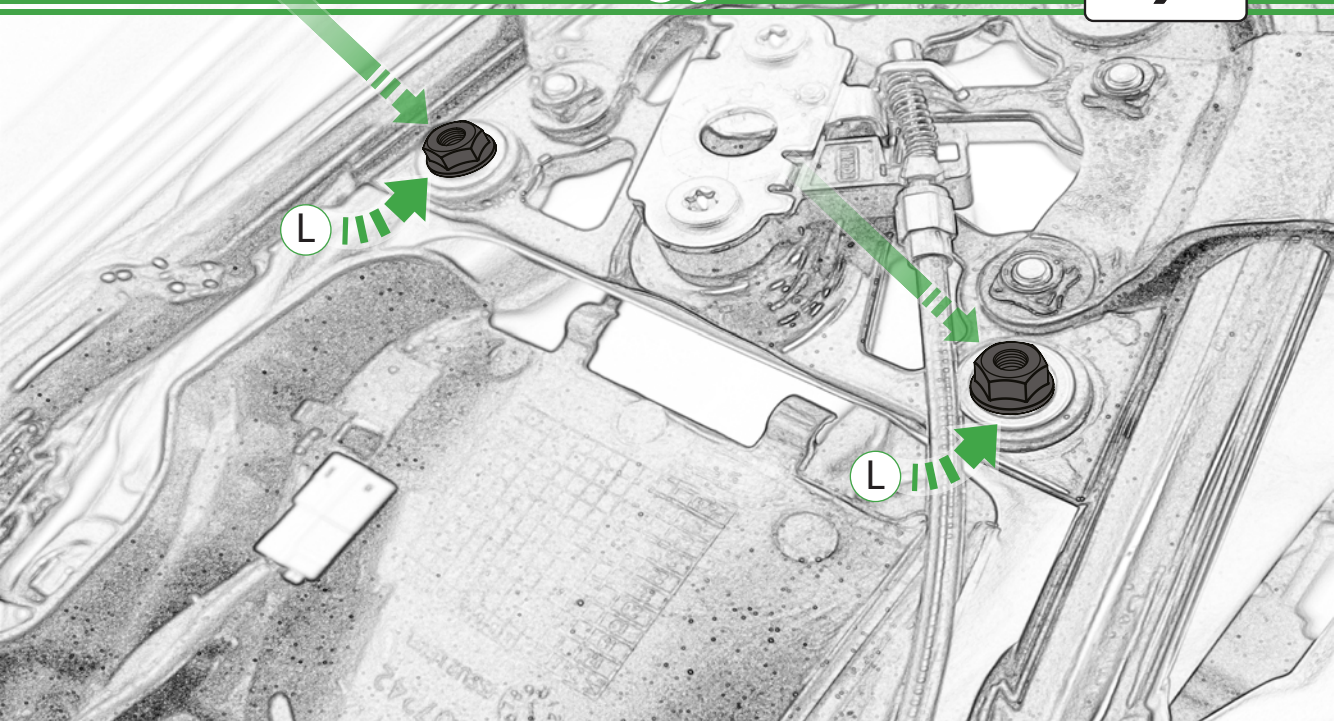
Caution

Run wires neatly down the channel in both parts ensuring they do not get trapped or squashed

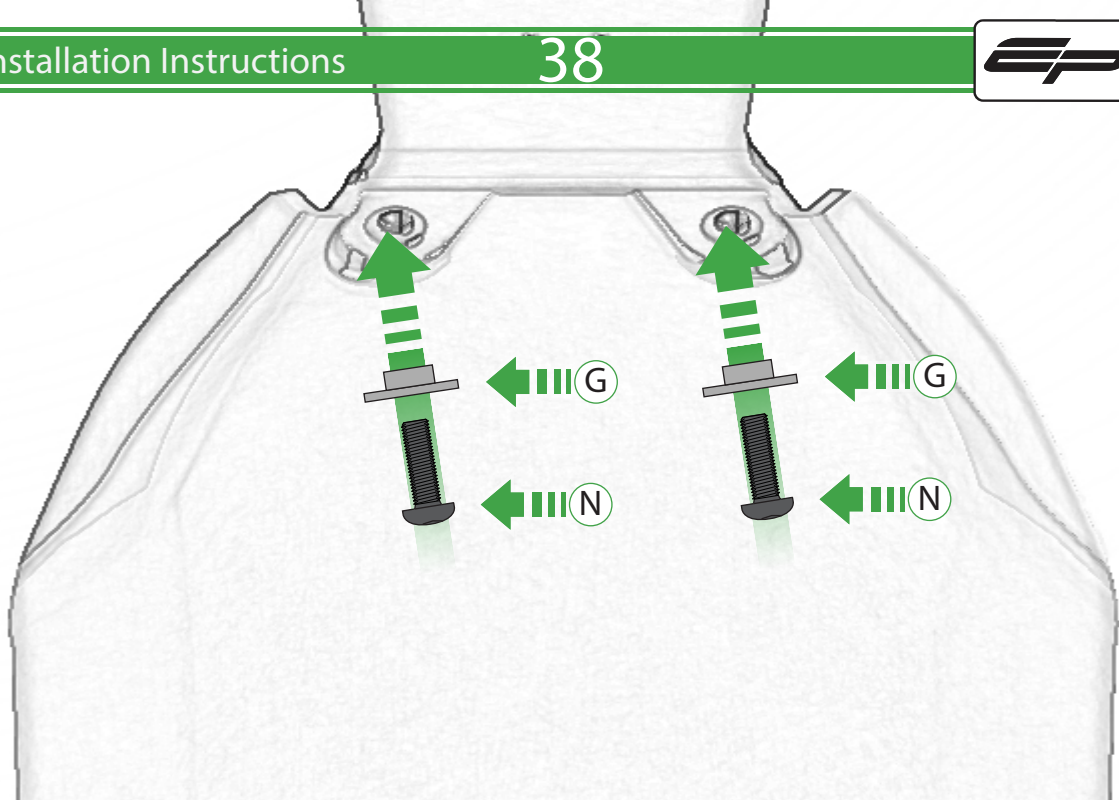


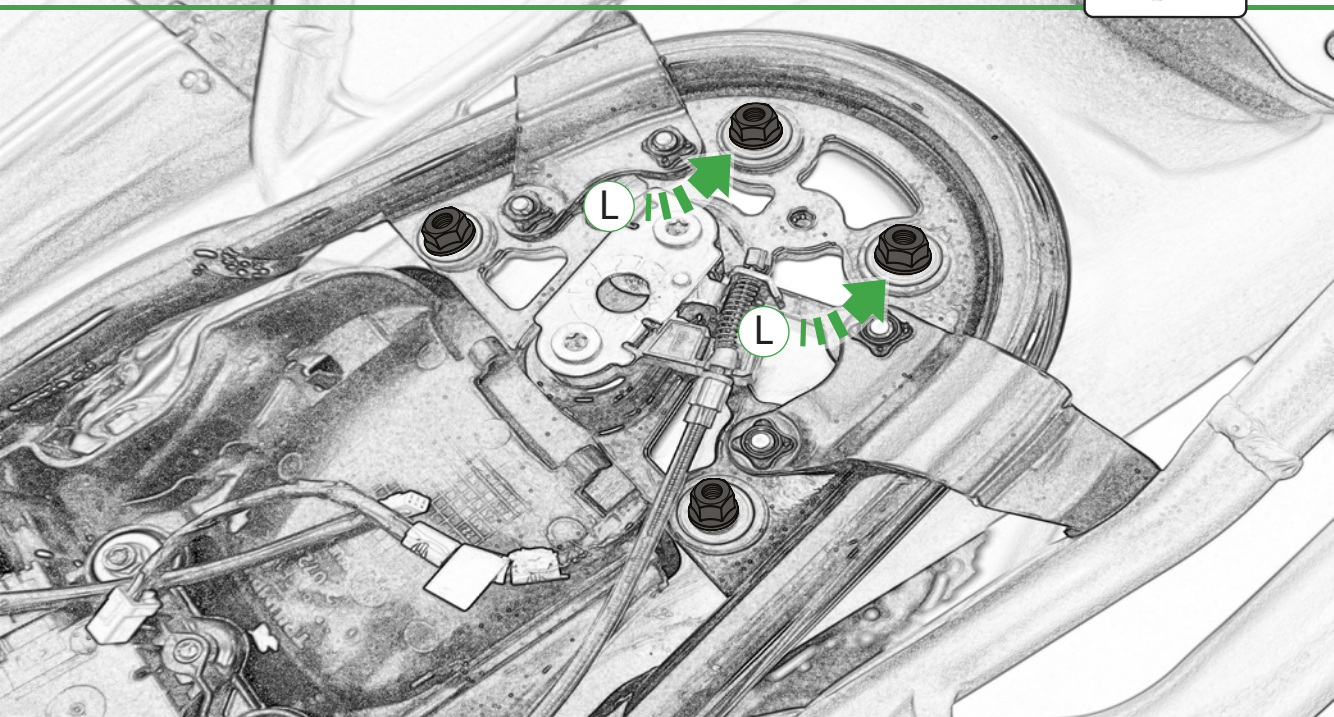




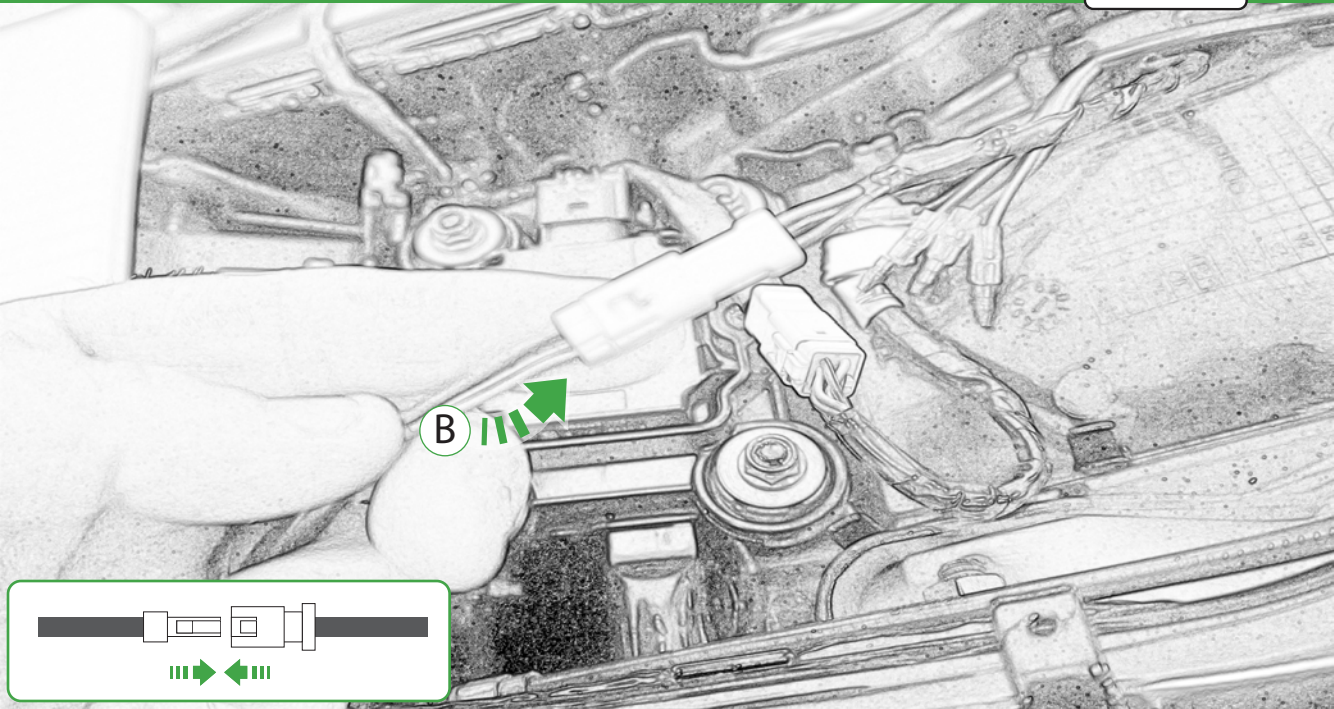




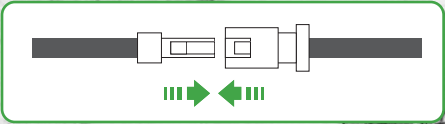


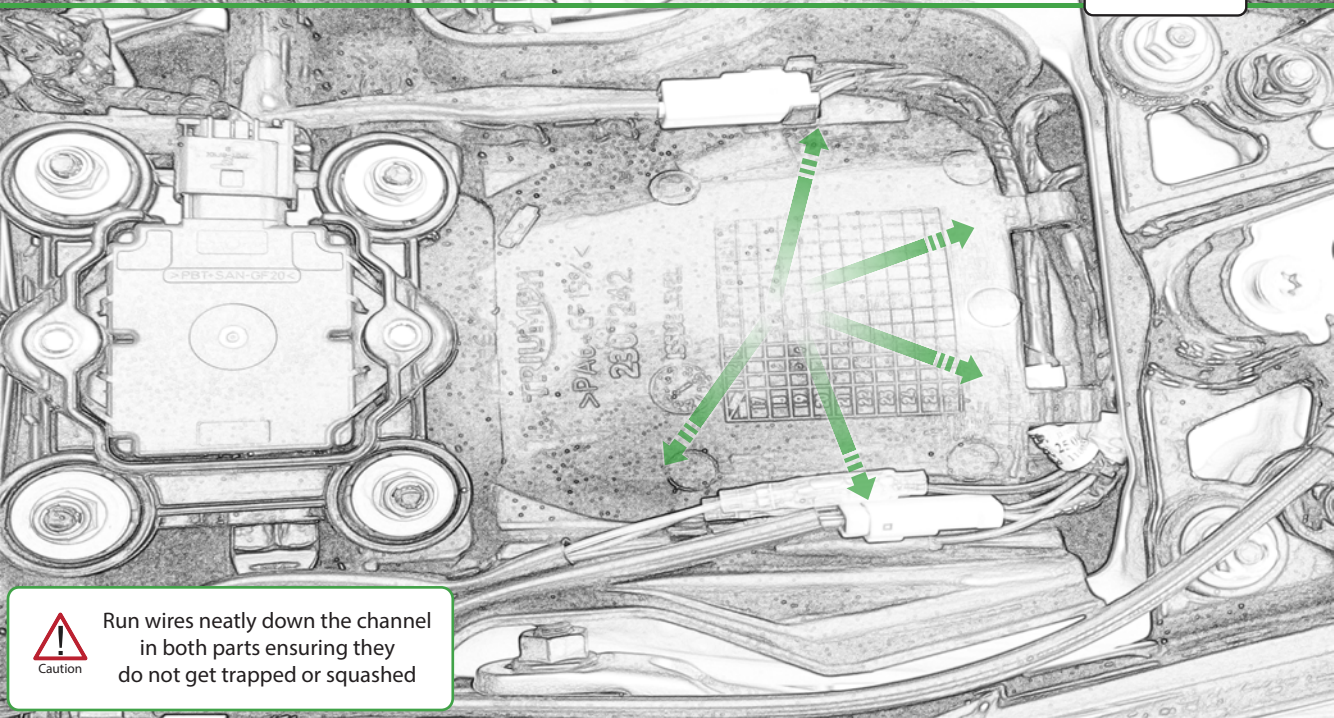




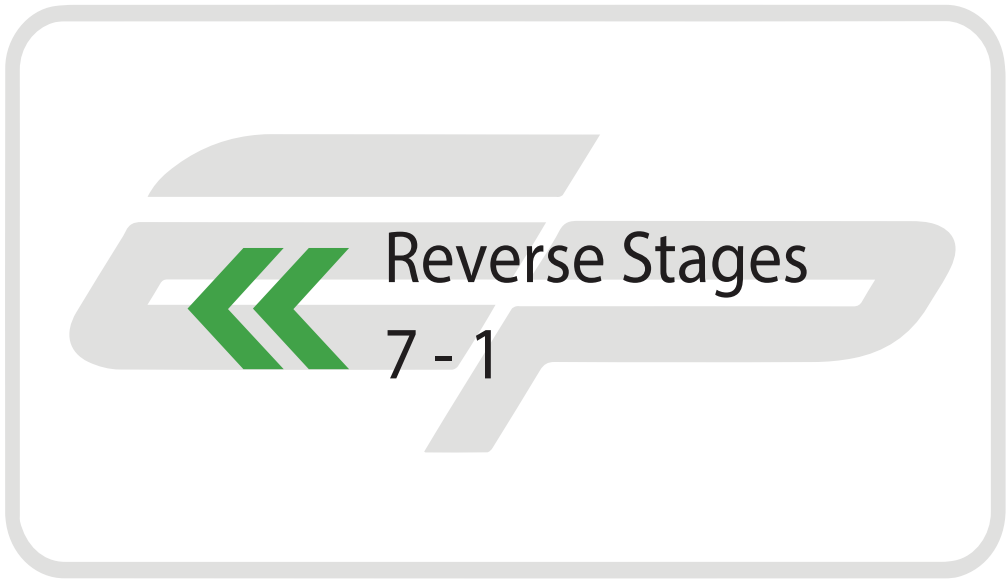


B





Run wires neatly down the channel in both parts ensuring they do not get trapped or squashed





## ESSENTIAL CHECKS



After installation of your tail tidy ensure that the licence plate does not contact the rear tyre when suspension is fully compressed.

Ensure all electrics including indicators, tail light, brake light and licence plate light lights are working correctly before riding the motorcycle.

It is recommended that periodic inspections are made to ensure that all fixings are fully tightend.

