



**EVOTECH**®  
P E R F O R M A N C E

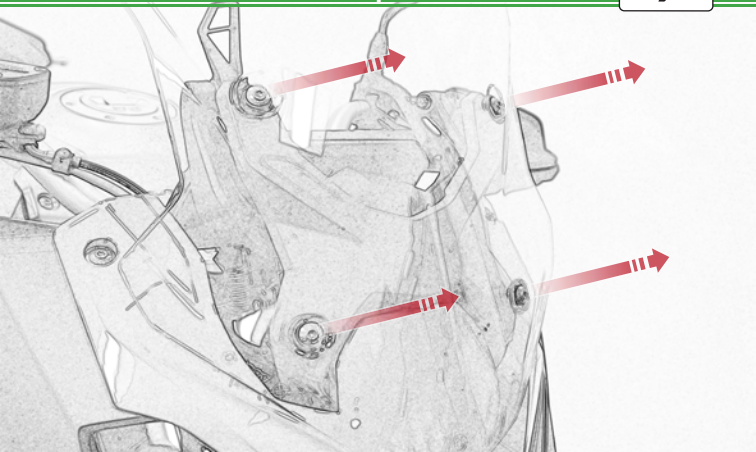
BMW F 900 XR / TE  
SP Connect Sat Nav Mount

Installation Instructions



## Kit Contents PRN014677-014913

- (A) 1 x M6 x 16 Countersunk Screw
- (B) 1 x Pivot Plate
- (C) 1 x SP Connect Plate
- (D) 1 x Spanner
- (E) 2 x M5 x 10mm Caphead Bolts
- (F) 2 x P-clips (No.1)
- (G) 2 x P-clips (No.2)
- (H) 2 x P-clips (No.3)
- (I) 2 x P-clips (No.4)
- (J) 2 x Lobe Screw
- (K) 2 x Locking Washer
- (L) 2 x M5 Black Washer
- (M) 2 x M4 x 5mm Button Head Bolts





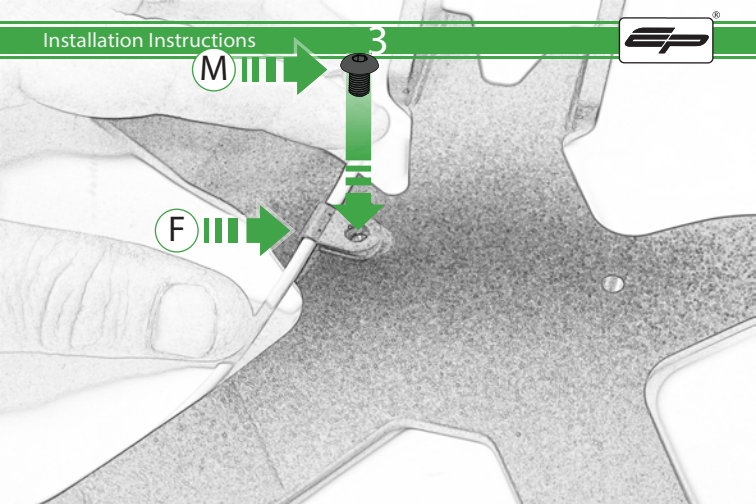
M

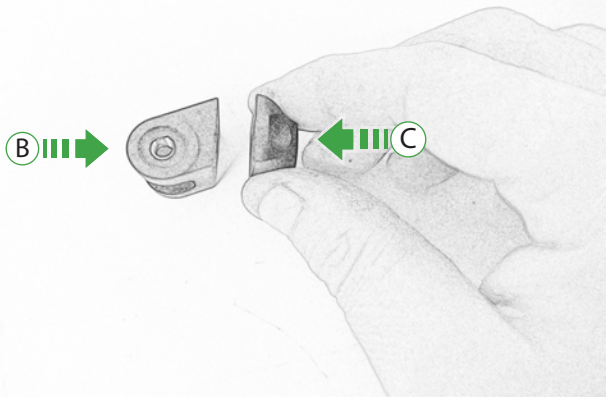


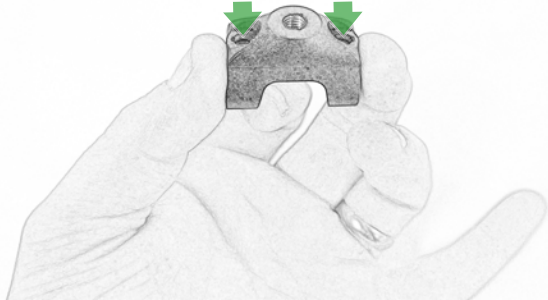
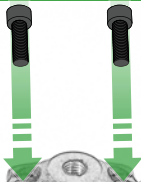
3

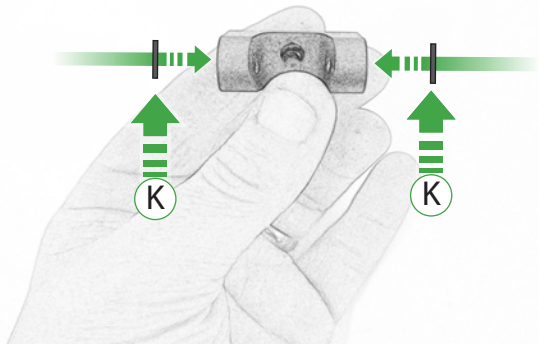


F

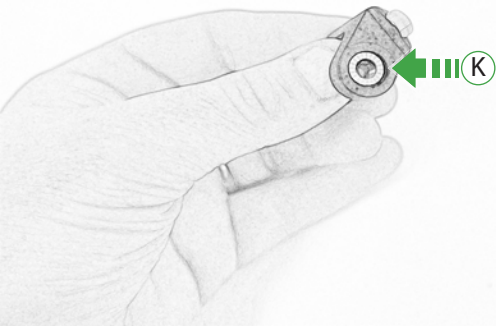


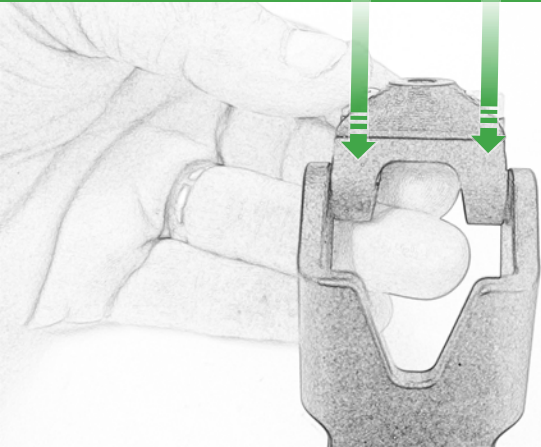


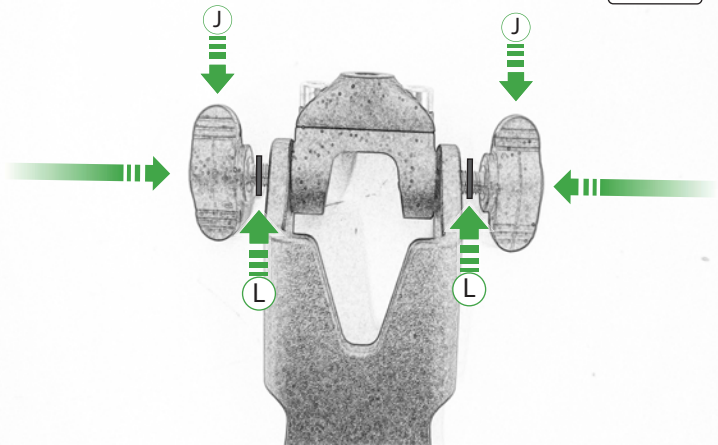


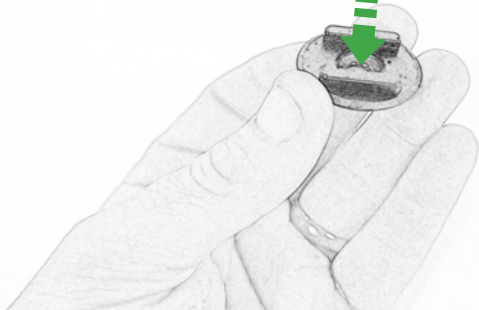


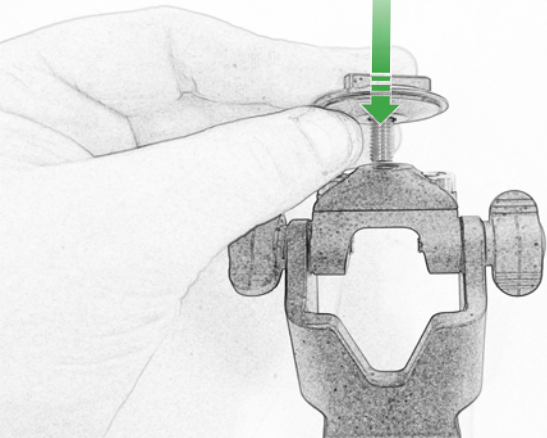


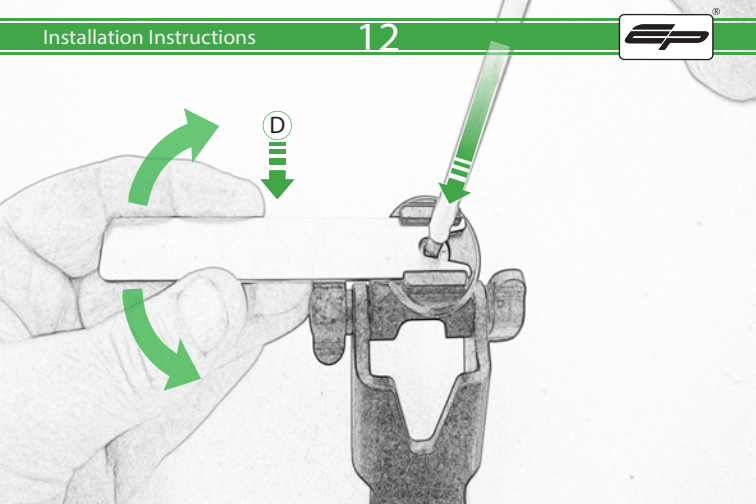


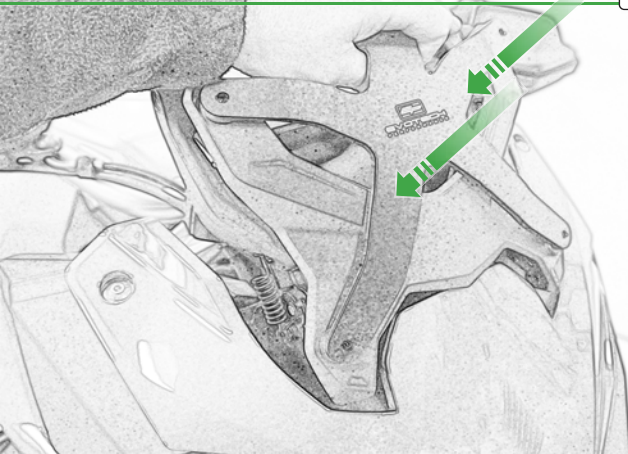


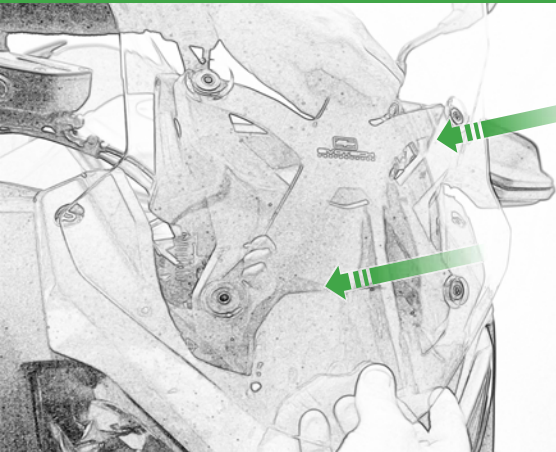




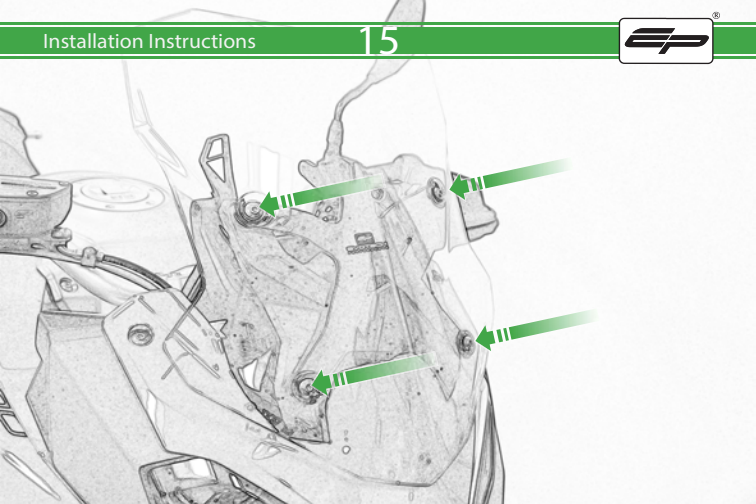














 **ESSENTIAL CHECKS** 

It is recommended that periodic inspections are made to ensure that all bolts are tightened to the specified torque settings.

Should the bike be involved in an accident a thorough inspection should be made and any components that have taken an impact, no matter how small, be replaced



**EVOTECH**®  
P E R F O R M A N C E

[www.evotech-performance.com](http://www.evotech-performance.com)