



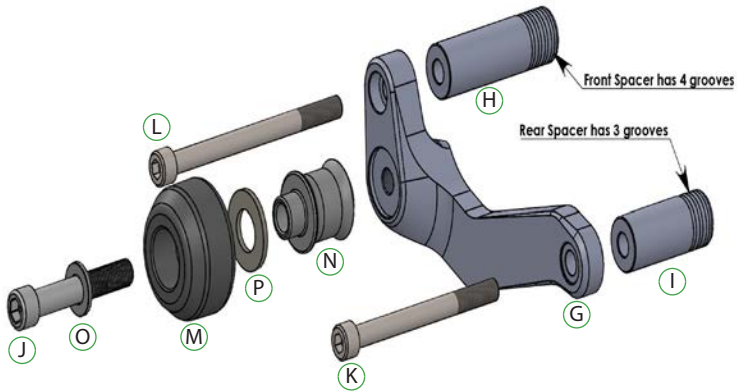
Kawasaki Ninja 400  
Crash Protection

Installation Instructions



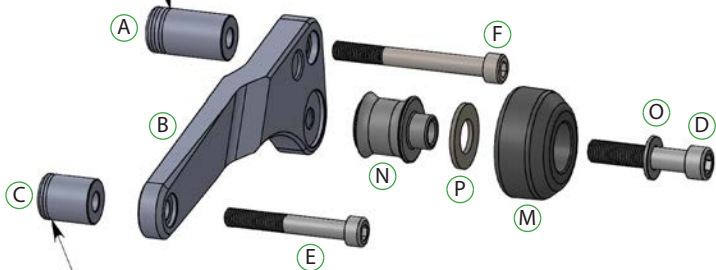
## Kit Contents PRN014024

- |                                  |                             |
|----------------------------------|-----------------------------|
| (A) 1 x R/H Bobbin Bracket       | (M) 2 x Bobbin Head         |
| (B) 1 x R/H Front Inner Spacer   | (N) 2 x Bobbin Stem         |
| (C) 1 x R/H Rear Inner Spacer    | (O) 2 x M12 Washer          |
| (D) 1 x M12 x 65mm Caphead Bolt  | (P) 2 x Polyurathane Washer |
| (E) 1 x M10 x 80mm Caphead Bolt  |                             |
| (F) 1 x M10 x 100mm Caphead Bolt |                             |
| (G) 1 x L/H Bobbin Bracket       |                             |
| (H) 1 x L/H Front Inner Spacer   |                             |
| (I) 1 x L/H Rear Inner Spacer    |                             |
| (J) 1 x M12 x 75mm Caphead Bolt  |                             |
| (K) 1 x M10 x 110mm Caphead Bolt |                             |
| (L) 1 x M10 x 130mm Caphead Bolt |                             |

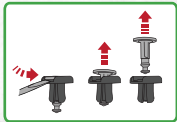
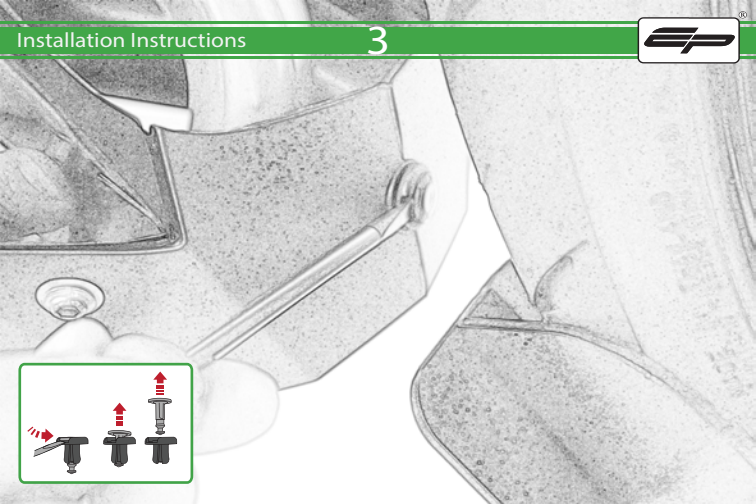


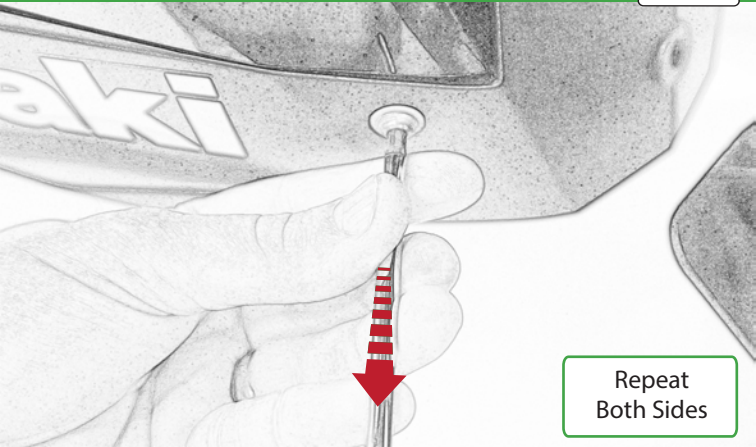


Front Spacer has 2 grooves

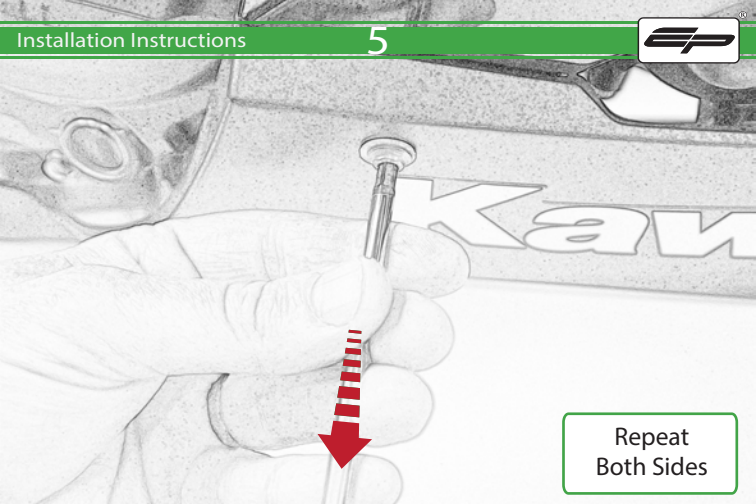


Rear Spacer has 1 groove





Repeat  
Both Sides

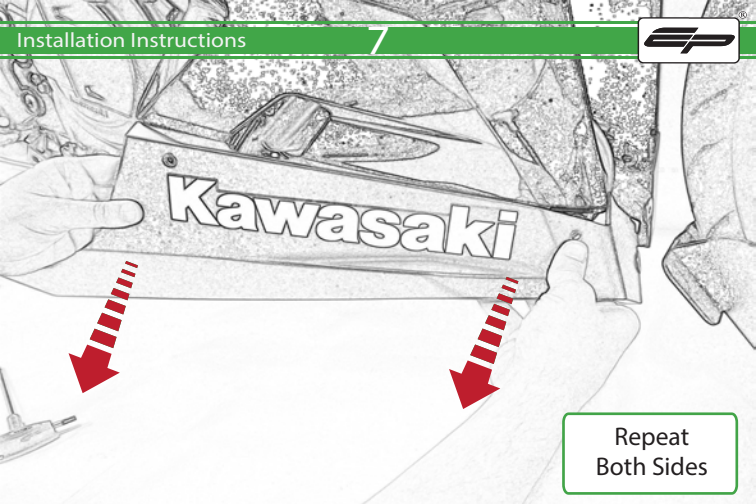


Repeat  
Both Sides



Repeat  
Both Sides





**Kawasaki**

Repeat  
Both Sides



RELEASE



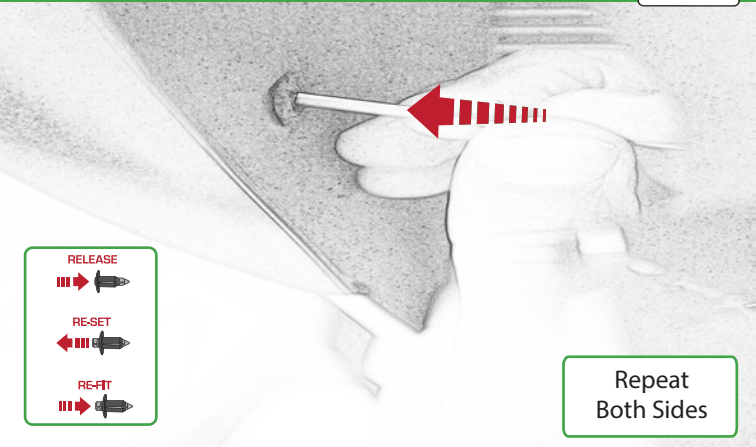
RE-SET



RE-FIT



Repeat  
Both Sides



RELEASE



RE-SET



RE-FIT



Repeat  
Both Sides



RELEASE



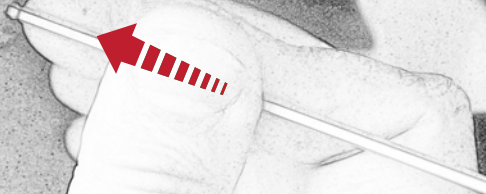
RE-SET



RE-FIT



Repeat  
Both Sides



RELEASE



RE-SET



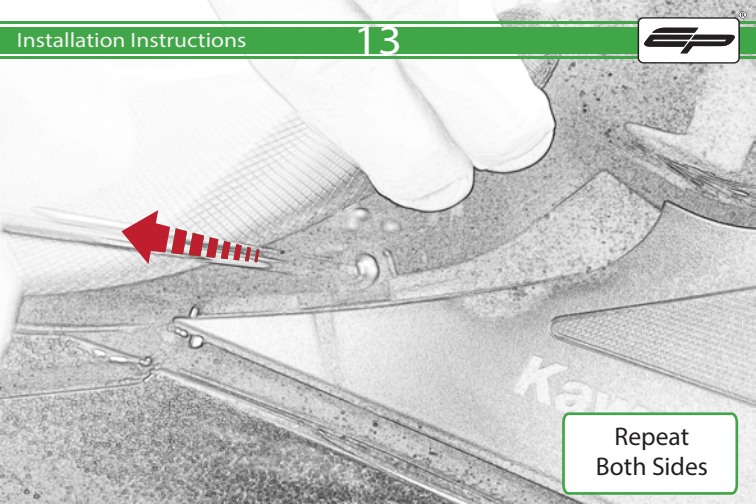
RE-FIT



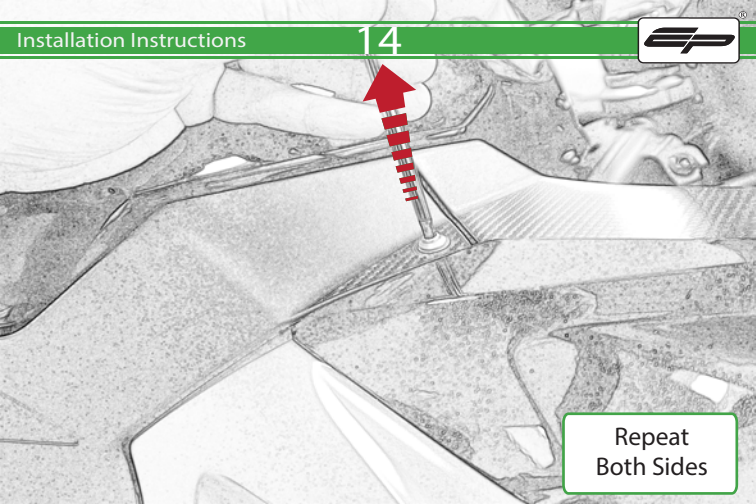
Repeat  
Both Sides



Repeat  
Both Sides

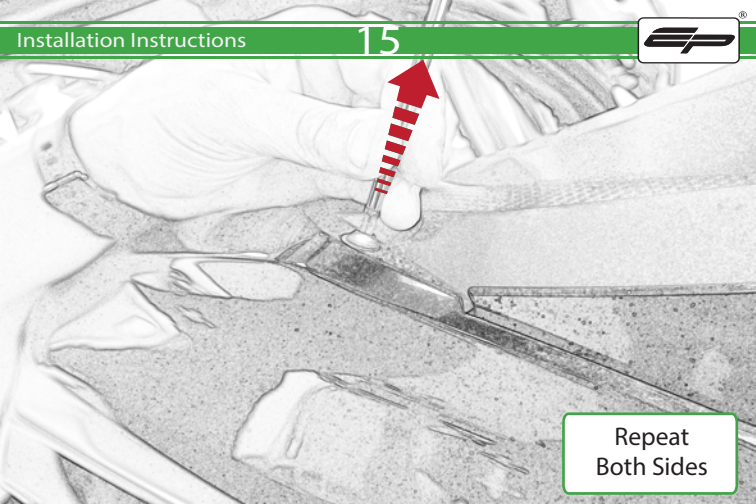


Repeat  
Both Sides

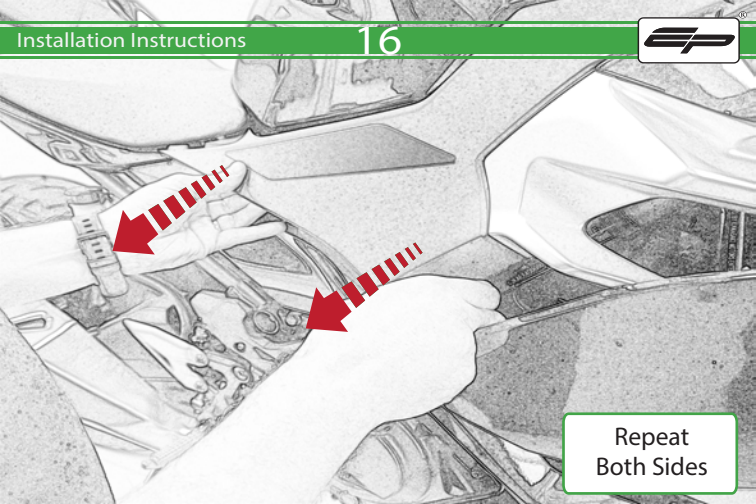


Repeat  
Both Sides

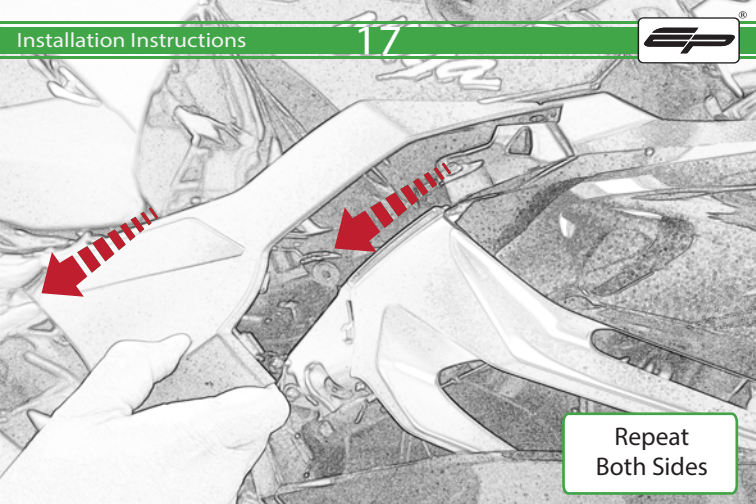




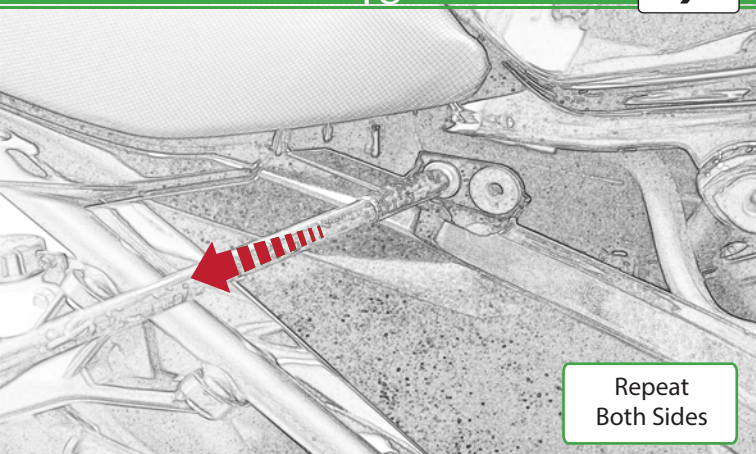
Repeat  
Both Sides



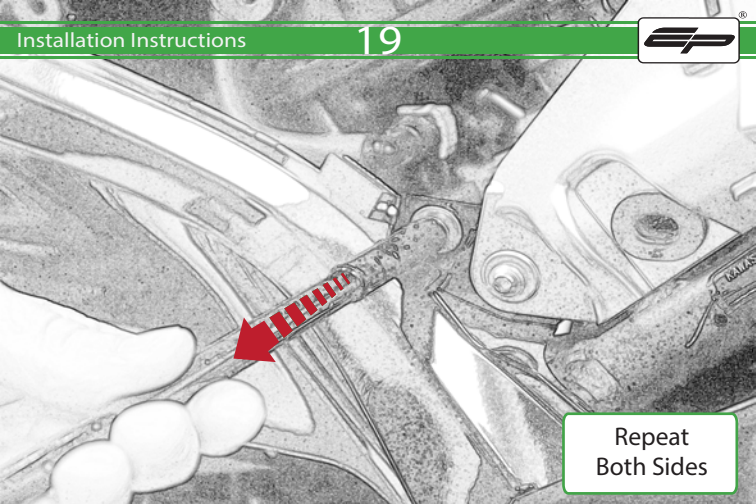
Repeat  
Both Sides



Repeat  
Both Sides



Repeat  
Both Sides



Repeat  
Both Sides



RELEASE



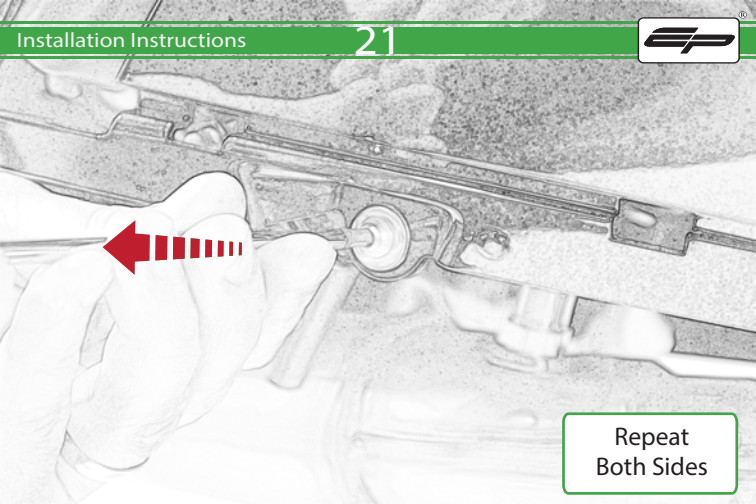
RE-SET



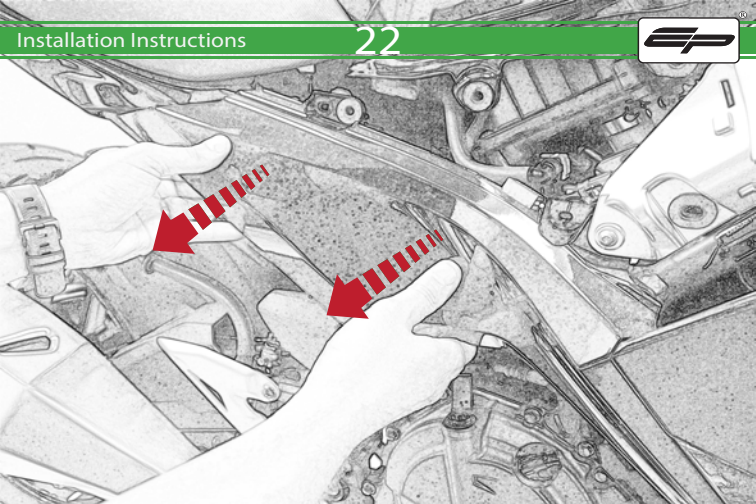
RE-FIT



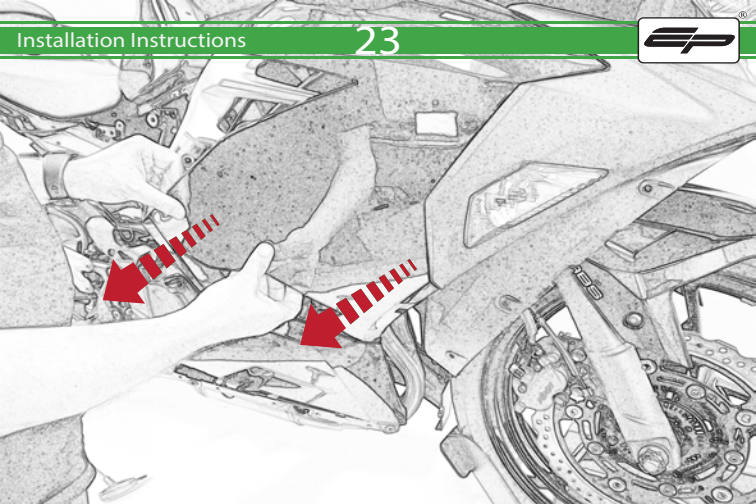
Repeat  
Both Sides

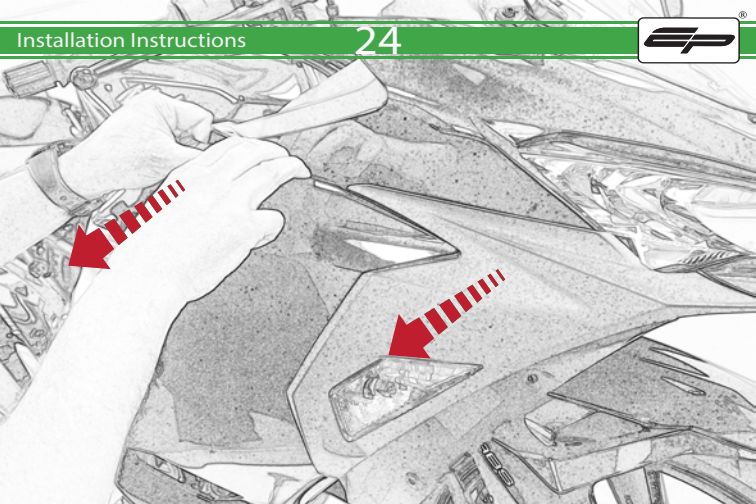


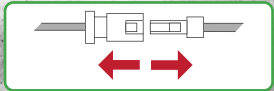
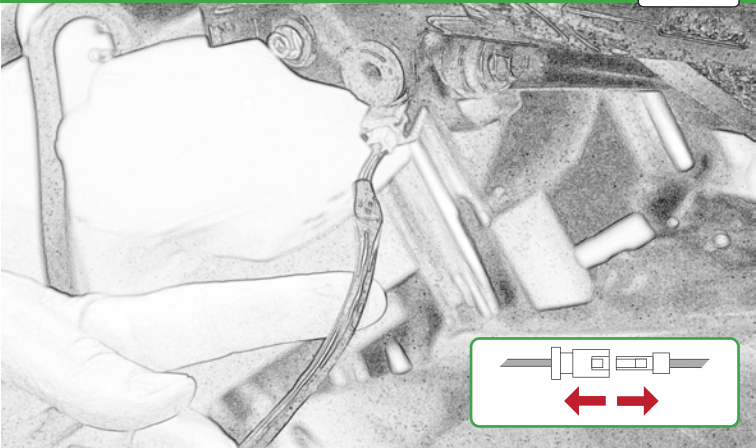
Repeat  
Both Sides

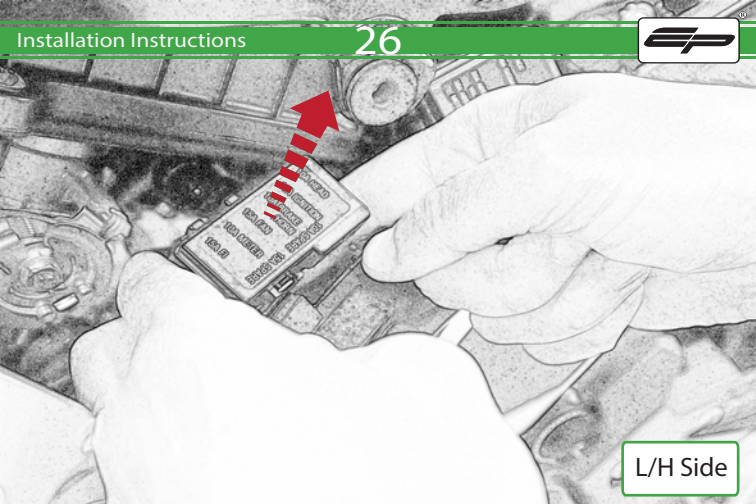




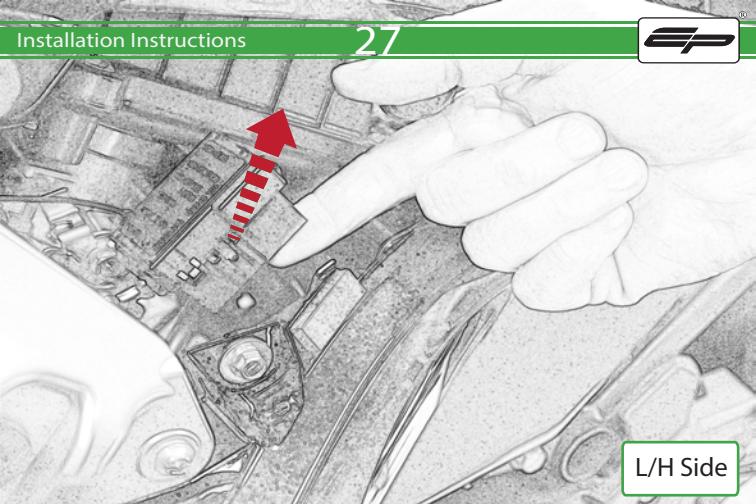




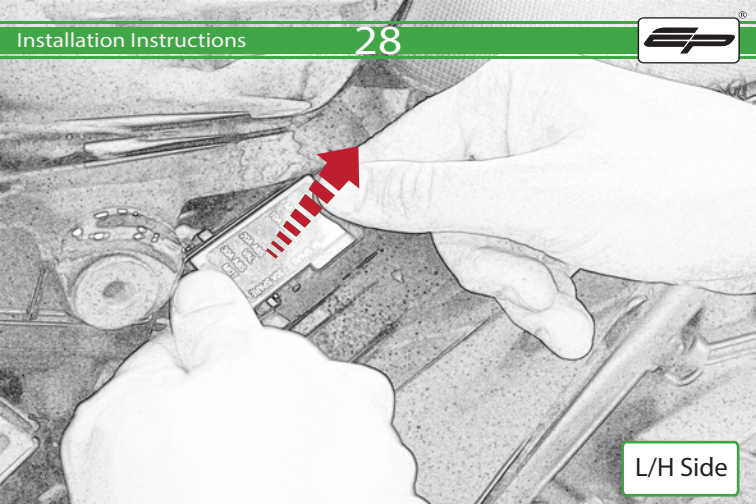




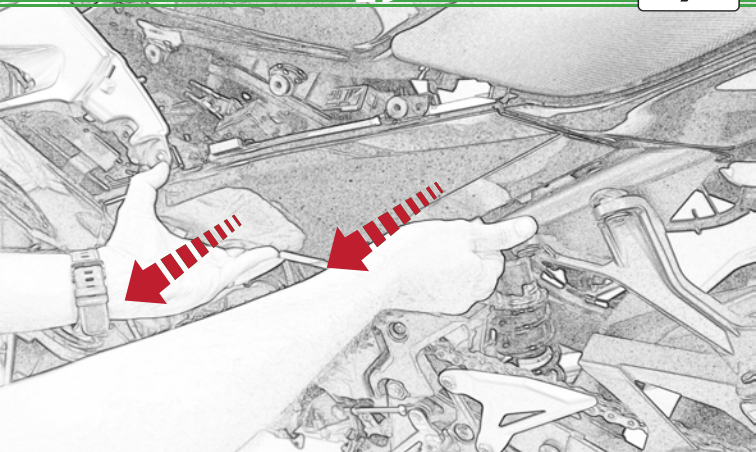
L/H Side

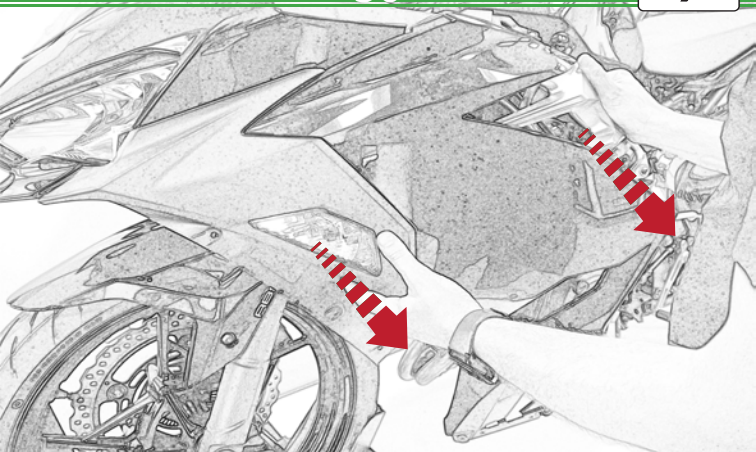


L/H Side

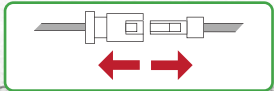
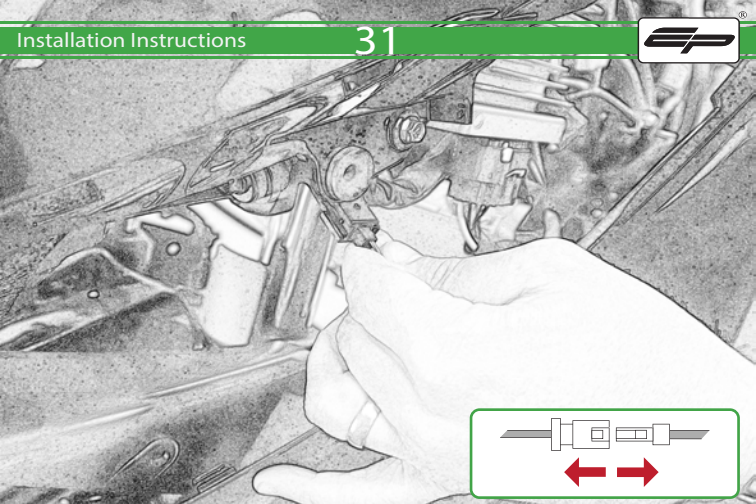


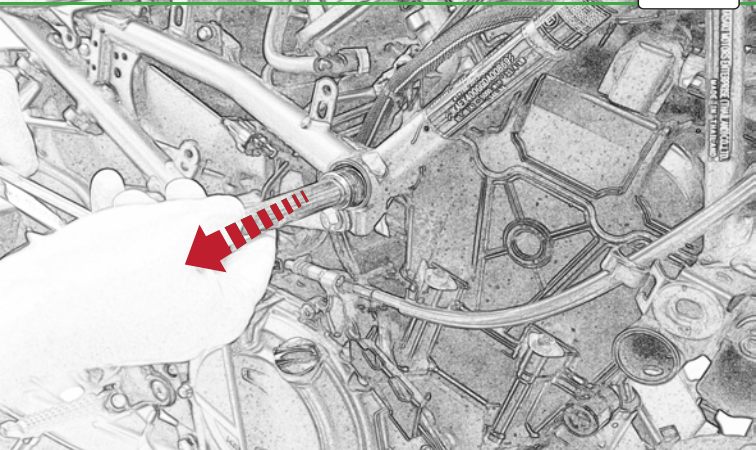
L/H Side

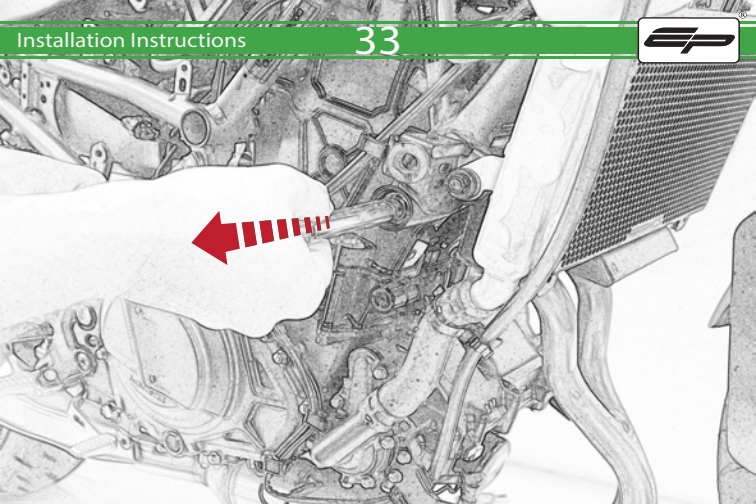


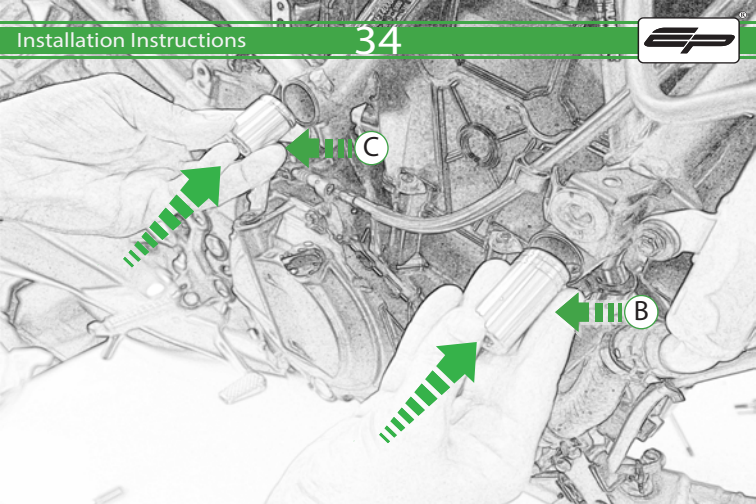






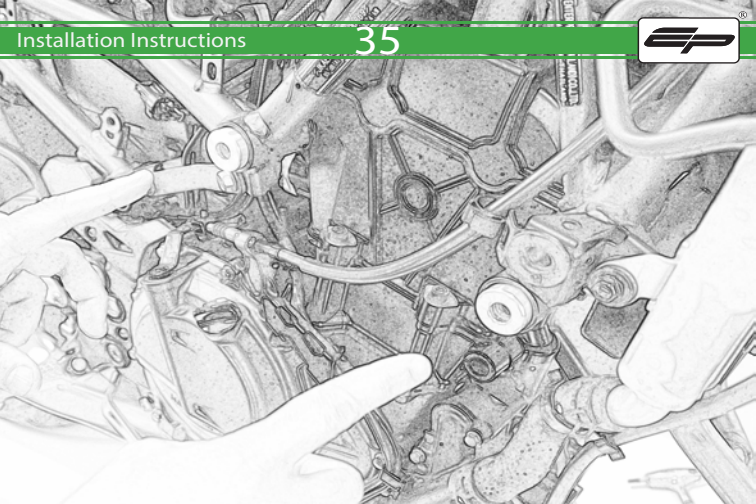


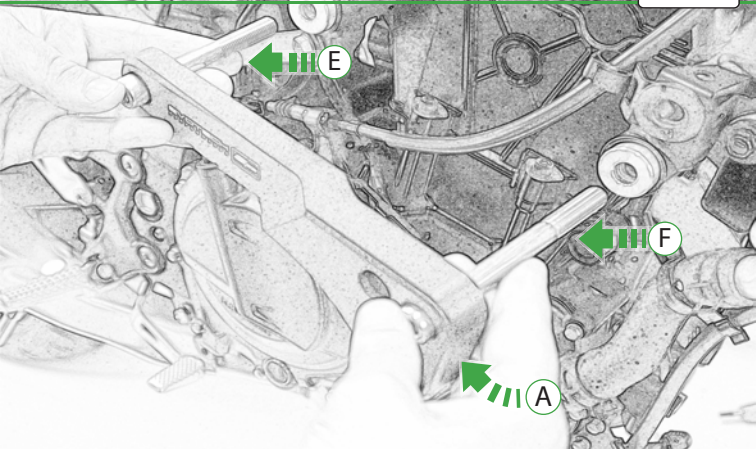




C

B

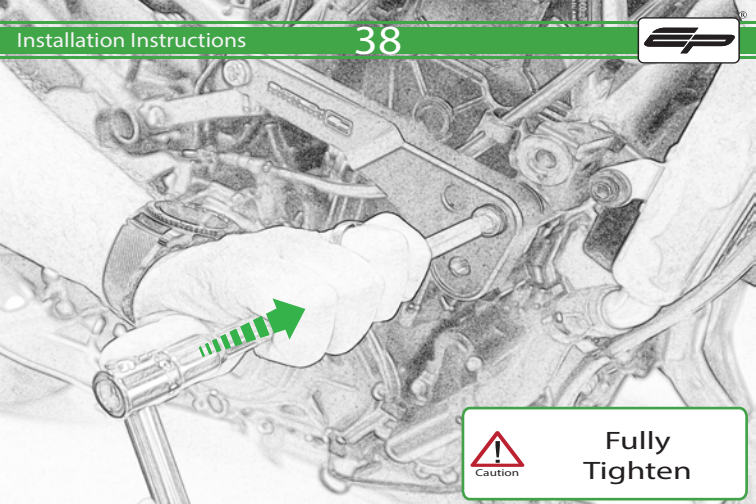






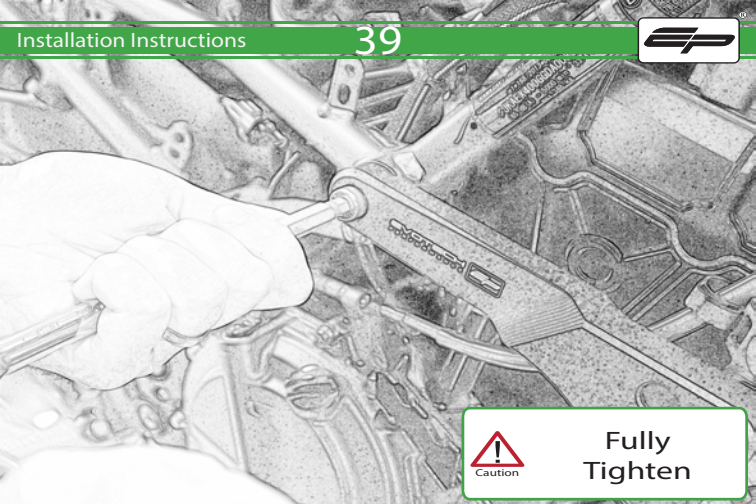
Caution

Do Not Fully Tighten

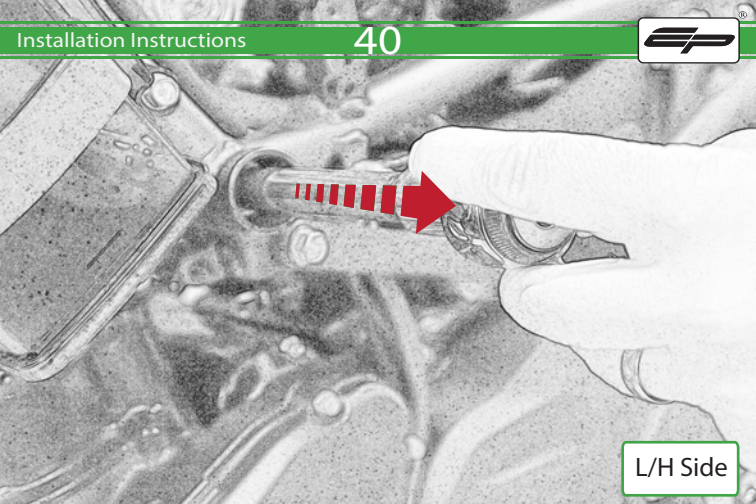


Fully  
Tighten

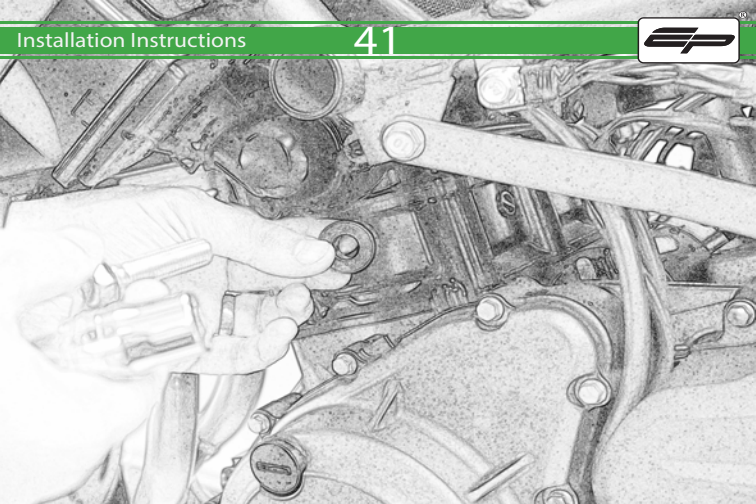


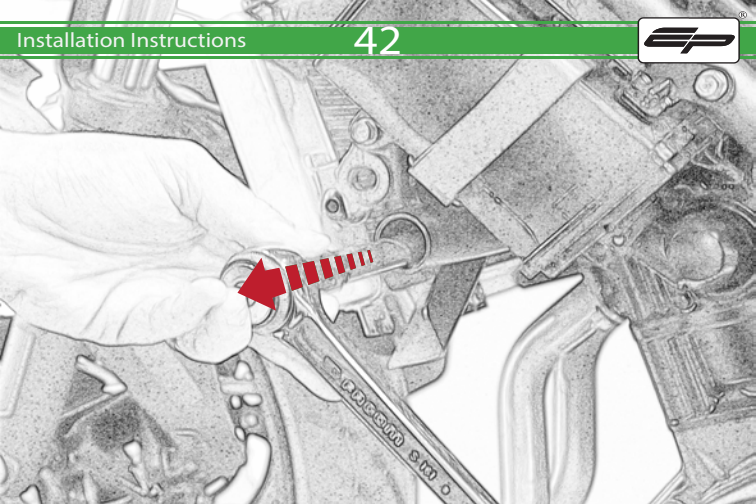


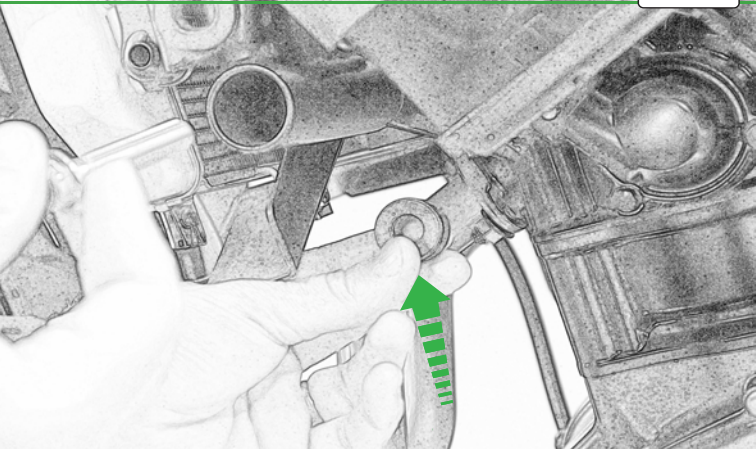
Fully  
Tighten

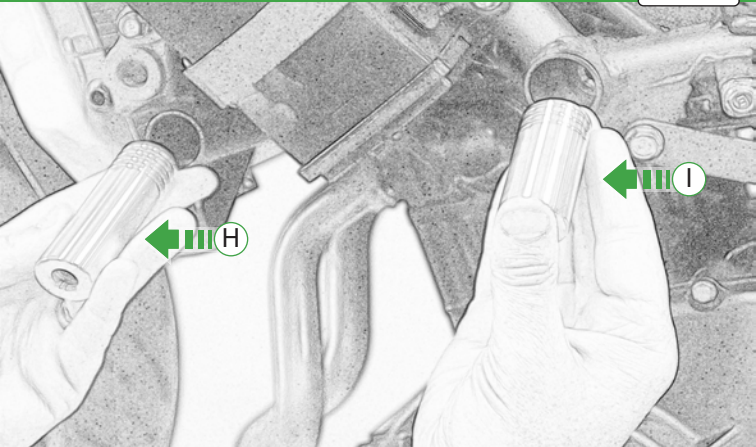


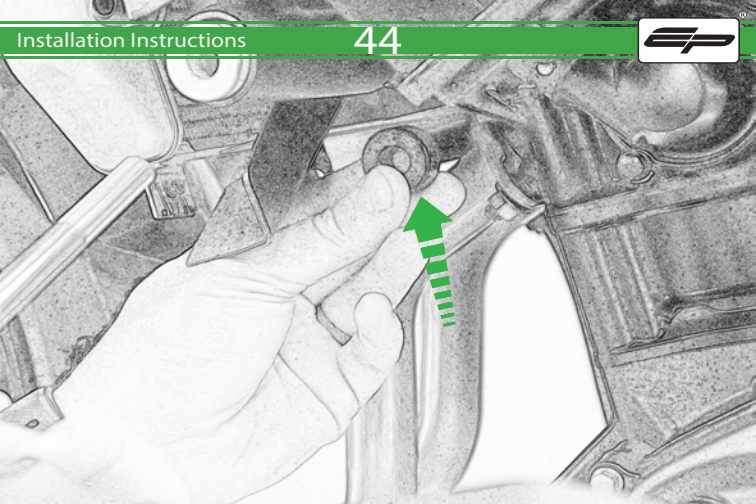
L/H Side

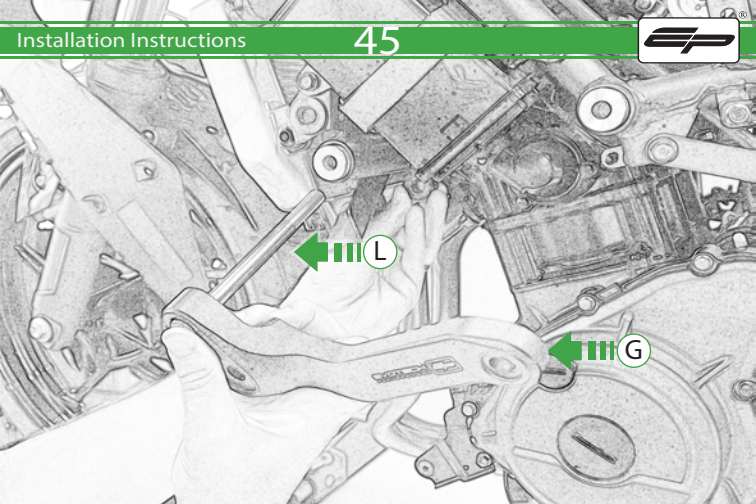








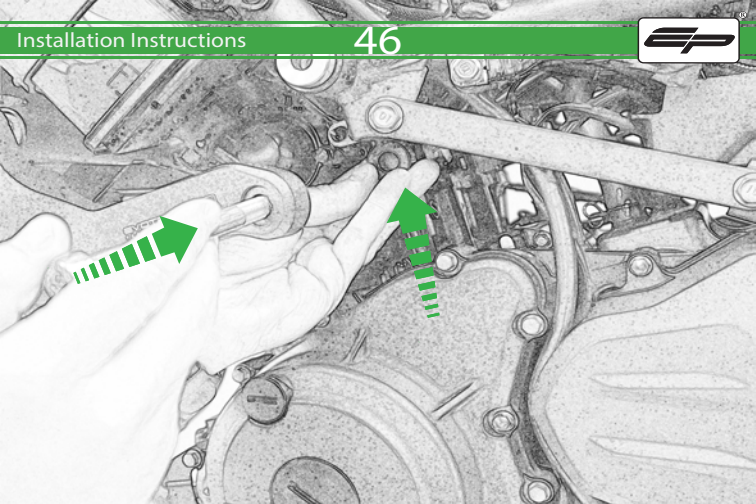


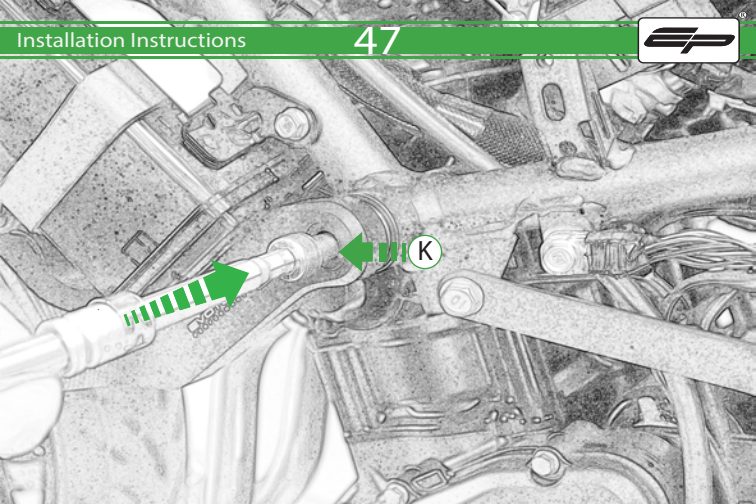


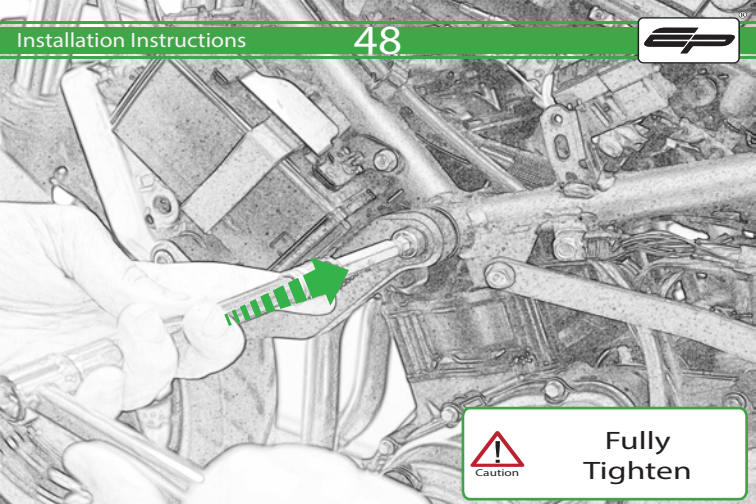
← L

← G

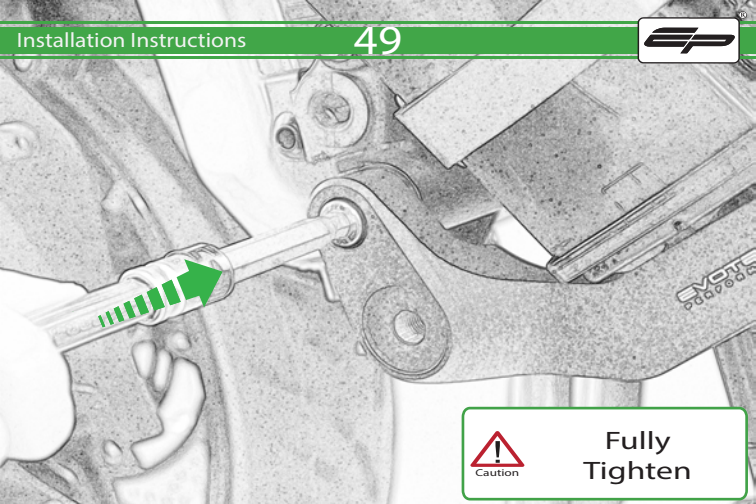








Fully  
Tighten

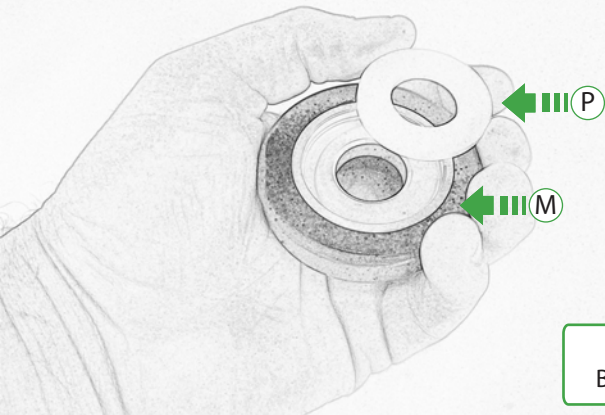


Fully  
Tighten

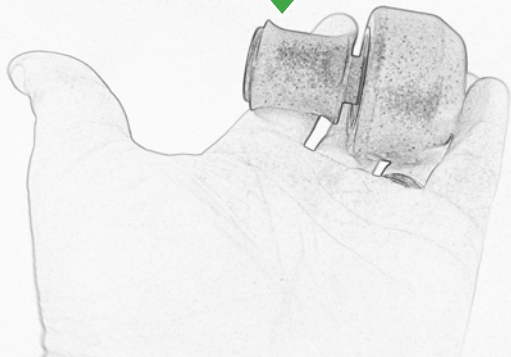


Reverse Stages

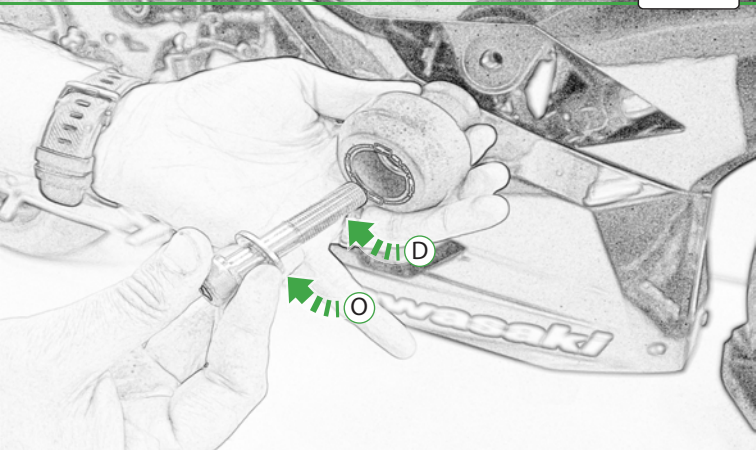
31 - 1



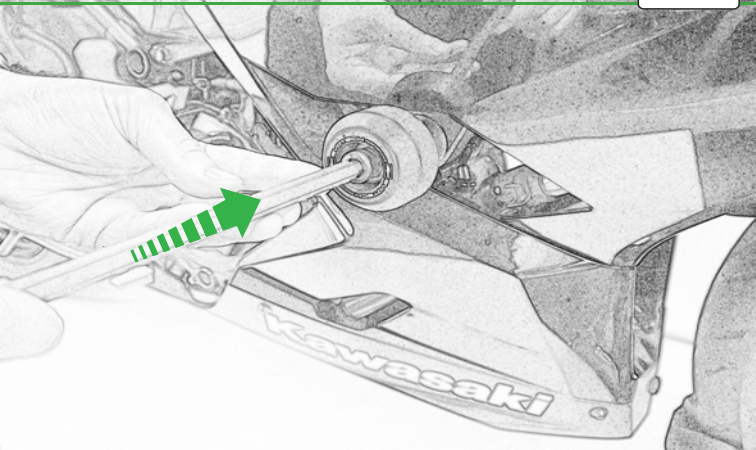
Repeat  
Both Sides

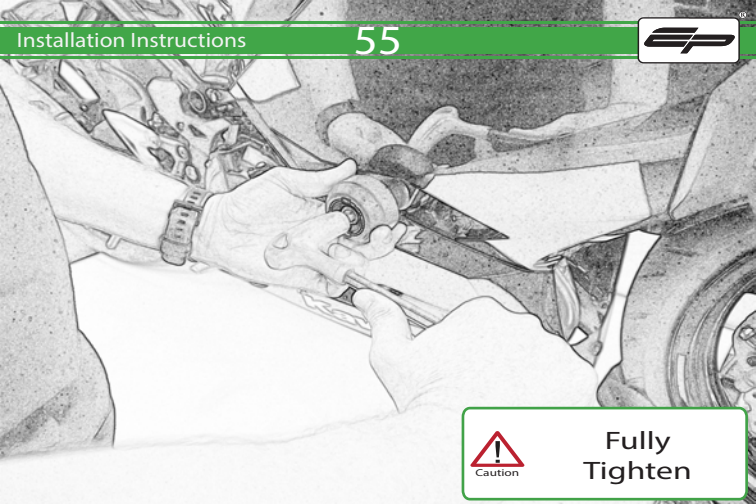


Repeat  
Both Sides



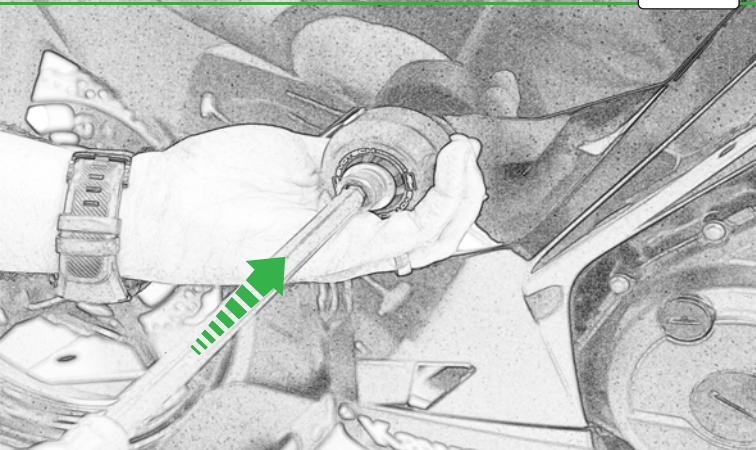


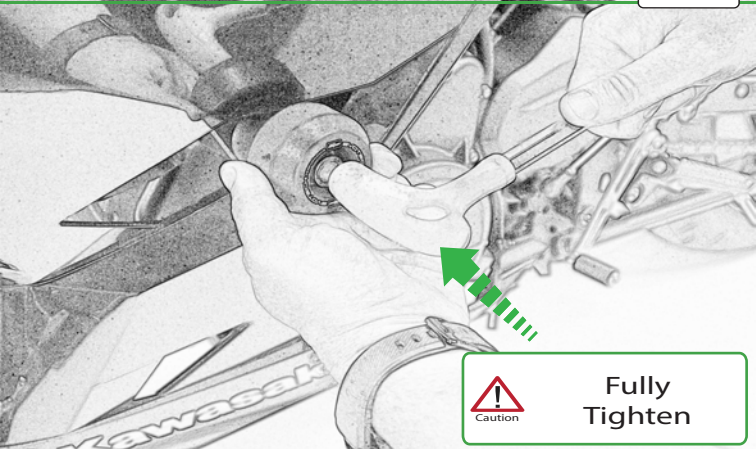




Fully  
Tighten







Fully  
Tighten



## ESSENTIAL CHECKS



It is recommended that periodic inspections are made to ensure that all bolts are tightened to the specified torque settings.

Should the bike be involved in an accident a thorough inspection should be made and any components that have taken an impact, no matter how small, be replaced



**EVOTECH**®  
P E R F O R M A N C E

[www.evotech-performance.com](http://www.evotech-performance.com)