

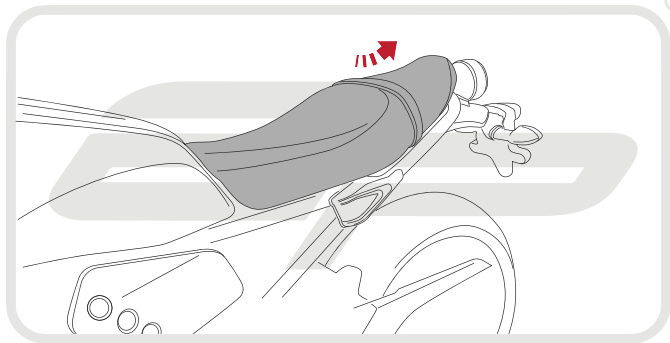


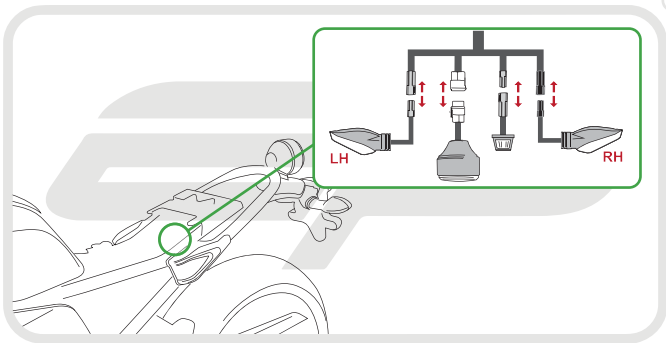
## YAMAHA XSR700 TAIL TIDY

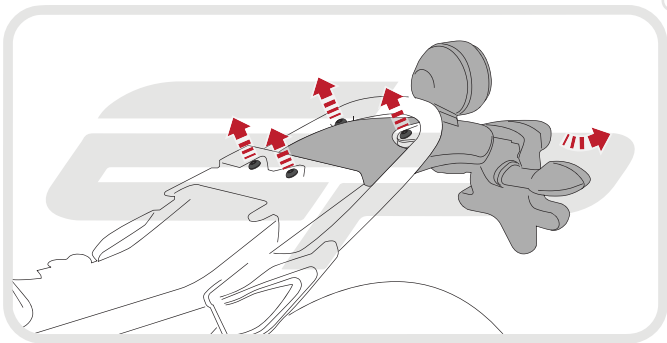
Product Reference - 13238

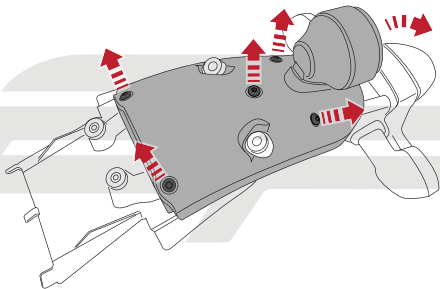
### Kit Contents

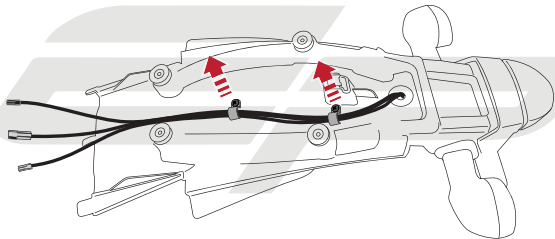
- |   |  |
|---|--|
| <b>A</b> 1 x Main Tail Tidy                             | <b>L</b> 2 x M6 - 16 Black Button Screws |
| <b>B</b> 1 x Indicator Bracket                          | <b>M</b> 2 x M6 Nyloc Nuts               |
| <b>C</b> 1 x Plastic Undertray                          | <b>N</b> 2 x M6 Black Washers            |
| <b>D</b> 1 x Reflector and Bracket                      | <b>O</b> 2 x M5 Nyloc Nuts               |
| <b>E</b> 1 x LED Light Unit <i>(with nuts attached)</i> | <b>P</b> 2 x M4 Nyloc Nuts               |
| <b>F</b> 1 x Stainless Mounting Boss                    | <b>Q</b> 3 x Undertray Tabs              |
| <b>G</b> 1 x Wiring Connector                           | <b>R</b> 3 x M4 - 8 Black Button Screws  |
| <b>H</b> 1 x M5 - 16 Black Button Screw                 | <b>S</b> 5 x M4 Black Washers            |
| <b>I</b> 1 x M5 Black Washer                            | <b>T</b> 5 x Cable Ties                  |
| <b>J</b> 2 x Plastic Spacers                            | <b>U</b> 8 x M5 - 10 Black Button Screws |
| <b>K</b> 2 x Plastic Nuts and Screws                    | <b>V</b> 2 x M6 - 25 Black Button Screws |

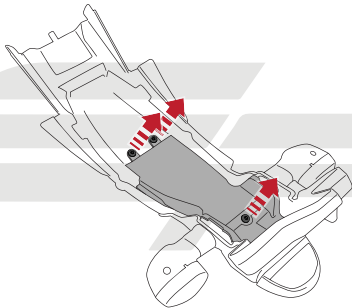


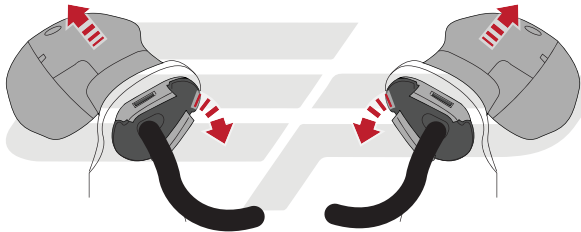










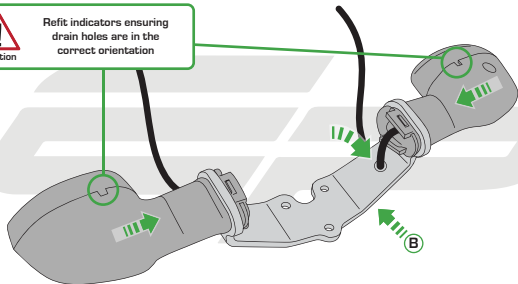


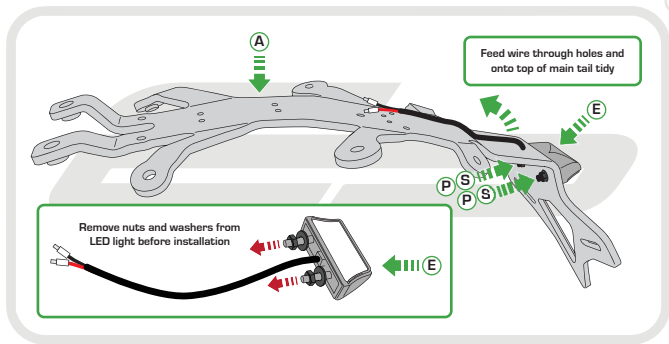




Caution

Refit indicators ensuring  
drain holes are in the  
correct orientation

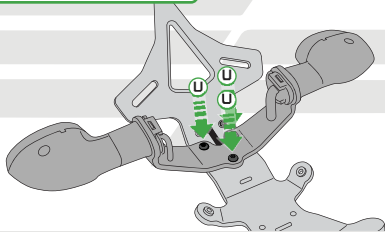






Caution

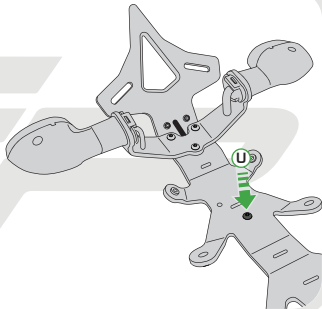
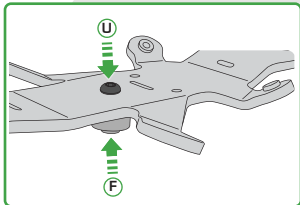
Follow this stage if bike has panniers fitted.  
If NOT running panniers please move  
on to the next stage





Caution

Follow this stage if bike has panniers fitted.  
If NOT running panniers please move  
on to the next stage





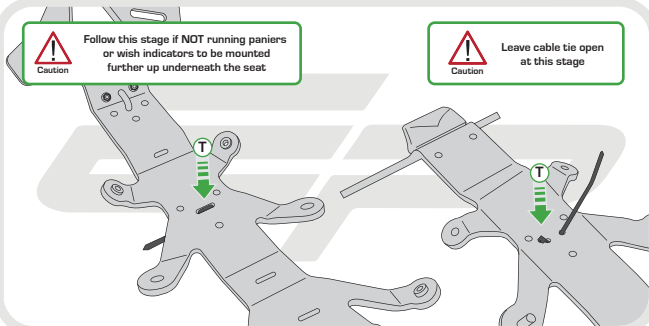
Caution

Follow this stage if **NOT** running paniers  
or wish indicators to be mounted  
further up underneath the seat



Caution

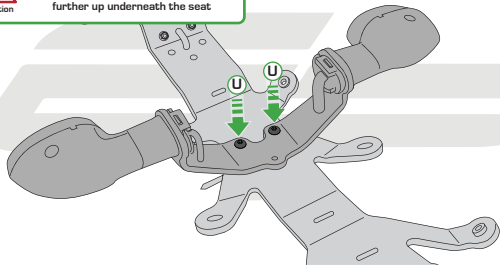
Leave cable tie open  
at this stage





Caution

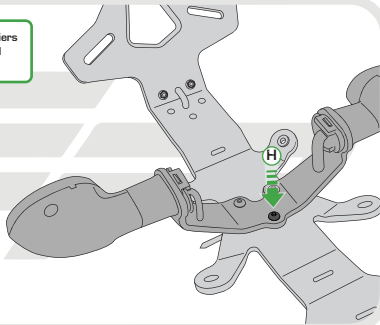
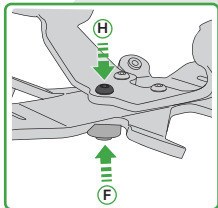
Follow this stage if **NOT** running paniers  
or wish indicators to be mounted  
further up underneath the seat

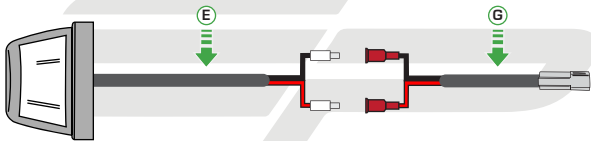




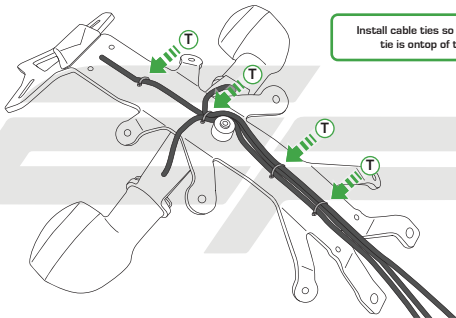
Caution

Follow this stage if **NOT** running paniers  
or wish indicators to be mounted  
further up underneath the seat

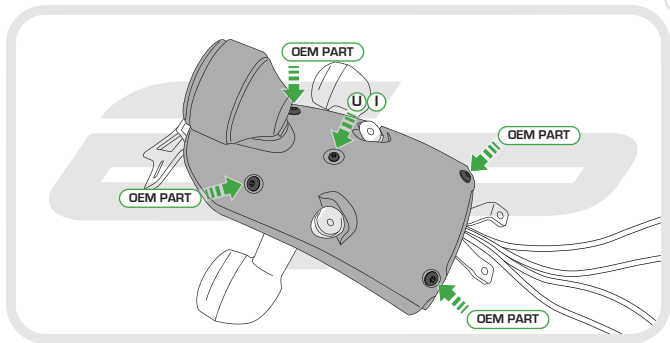


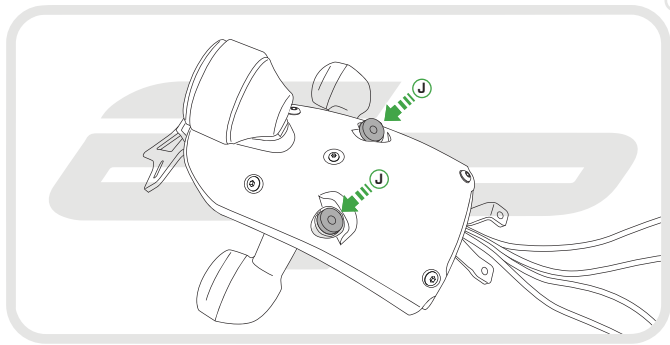






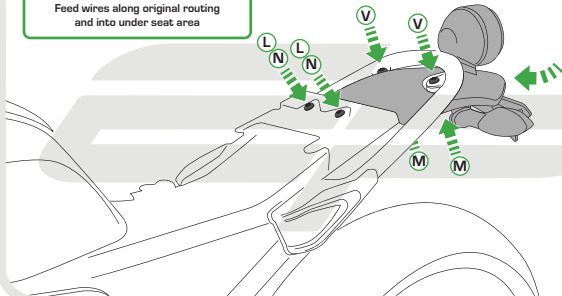
Install cable ties so the head of the tie is outtop of the tail tidy

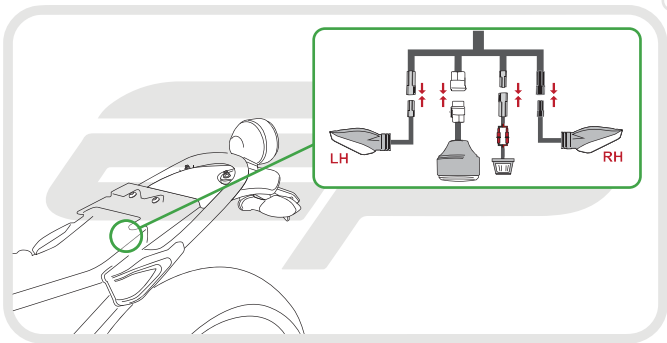


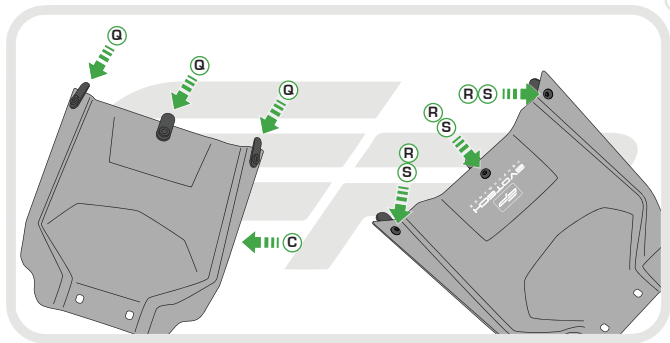


**EVOTECH**<sup>®</sup>  
P E R F O R M A N C E

Feed wires along original routing  
and into under seat area

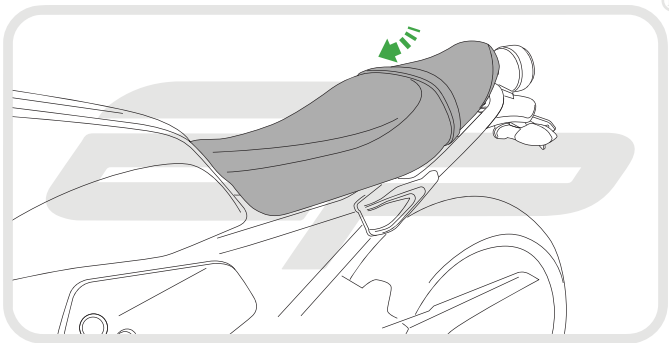






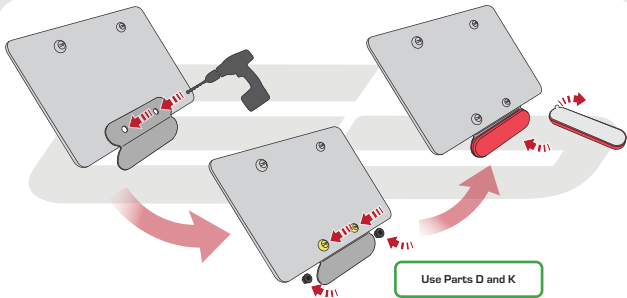
Ensure tabs installed in Stage 21  
tuck in behind original undertray







## Reflector Bracket Installation



**EVOTECH**<sup>®</sup>  
P E R F O R M A N C E



## ESSENTIAL CHECKS



After installation of your tail tidy ensure that the licence plate does not contact the rear tyre when suspension is fully compressed.

Ensure all electrics including indicators, tail light, brake light and licence plate light lights are working correctly before riding the motorcycle.

It is recommended that periodic inspections are made to ensure that all fixings are fully tightend.