



EVOTECH®
P E R F O R M A N C E

Installation Instructions

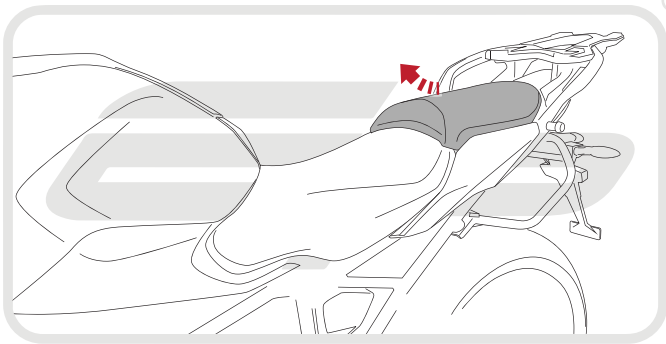


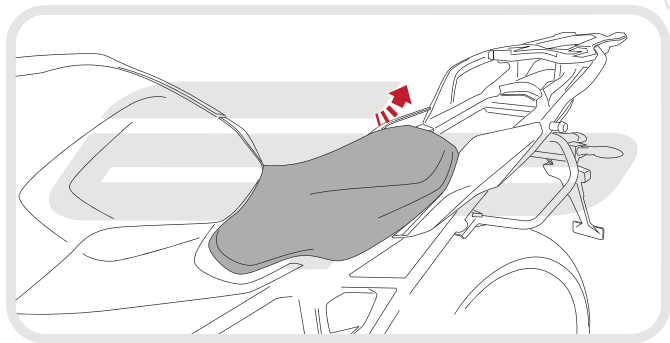
BMW R1200 RS TAIL TIDY

Product Reference - 13202

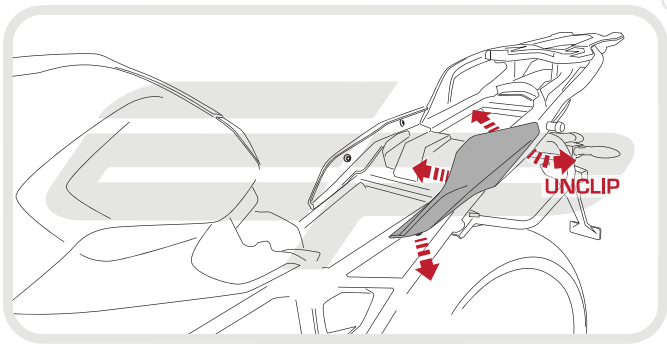
Kit Contents

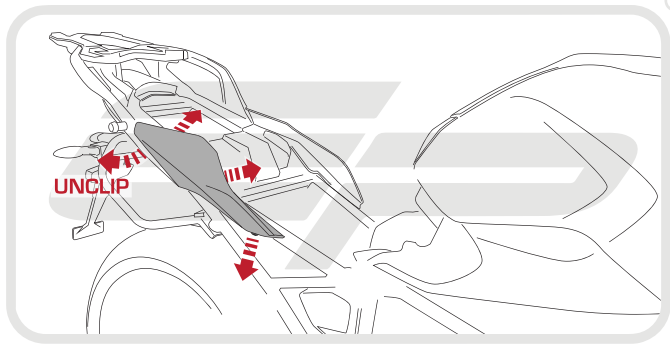
- | | |
|---|----------------------------------|
| Ⓐ 1 x Mounting Bracket | Ⓝ 2 x Plastic Screws and Nuts |
| Ⓑ 1 x Licence Plate Bracket A (Panier compatible) | Ⓚ 2 x M6 - 20 Button Head Screws |
| Ⓒ 1 x Licence Plate Bracket B (Non-Panier compatible) | Ⓛ 2 x M6 Nyloc Nuts |
| Ⓓ 1 x Light Bracket A (Panier compatible) | Ⓜ 2 x M6 Washers |
| Ⓔ 1 x Light Bracket B (Non-Panier compatible) | Ⓝ 2 x M4 - 10 Button Head Screws |
| Ⓕ 1 x LED Light Unit | Ⓞ 2 x M3 - 12 Button Head Screws |
| Ⓖ 1 x Plastic Undertray | Ⓟ 3 x M5 - 12 Button Head Screws |
| Ⓗ 1 x LED Bulb | Ⓠ 5 x Cable Ties |
| Ⓘ 2 x M6 Top Hat Washers | |

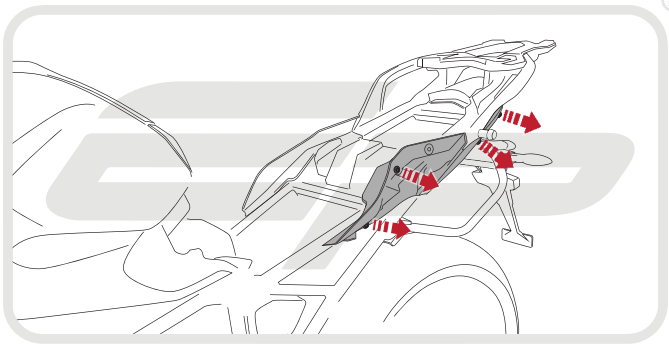


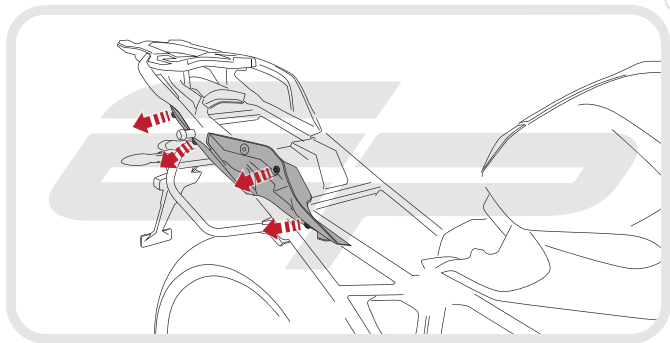


EVOTECH[®]
P E R F O R M A N C E

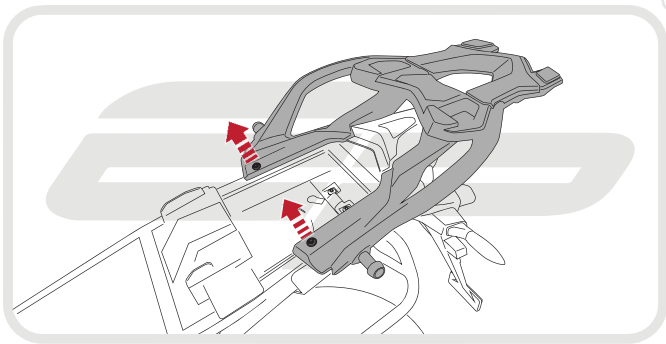




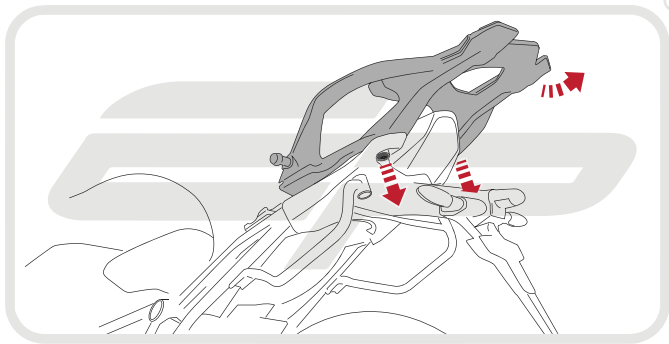




EVOTECH[®]
P E R F O R M A N C E



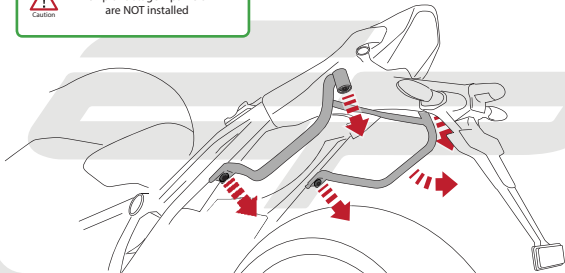
EVOTECH[®]
P E R F O R M A N C E

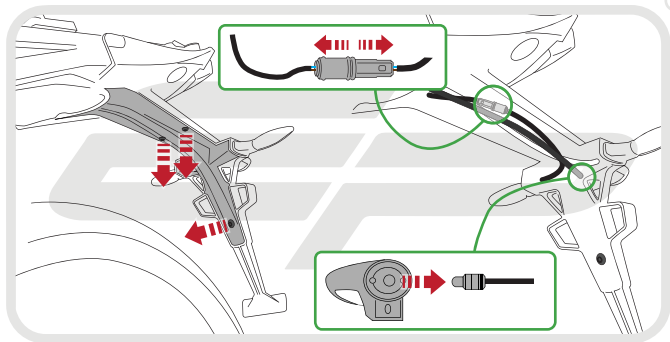




Caution

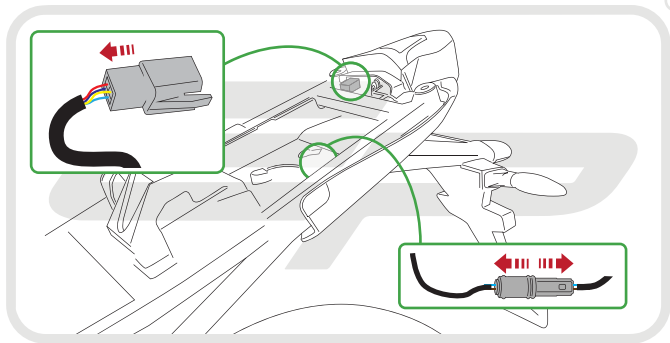
Skip this stage if paniers
are NOT installed

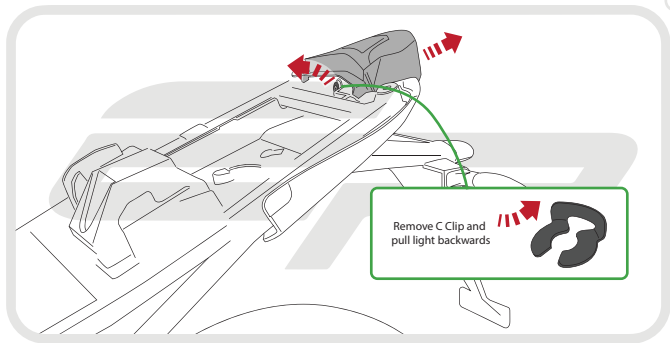


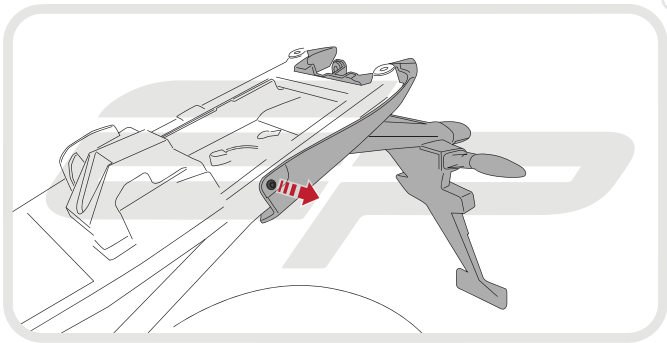




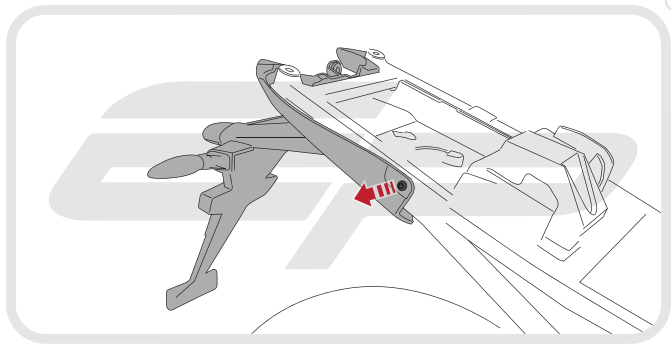
®



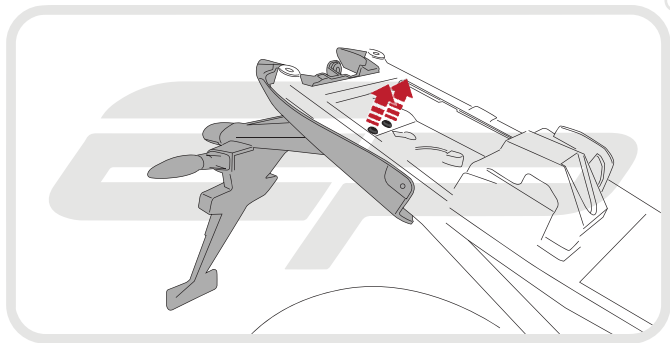




EVOTECH[®]
P E R F O R M A N C E



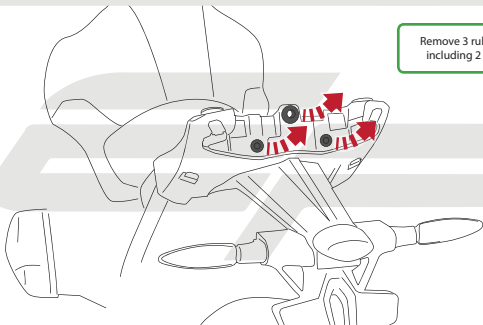
EVOTECH[®]
P E R F O R M A N C E



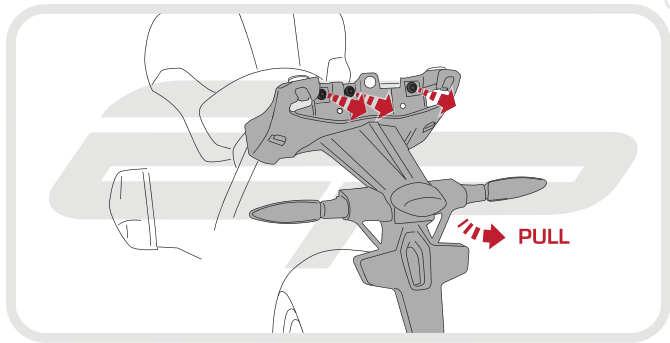
EVOTECH[®]
P E R F O R M A N C E

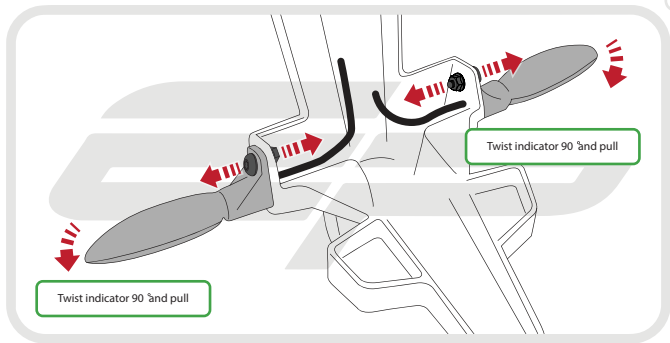


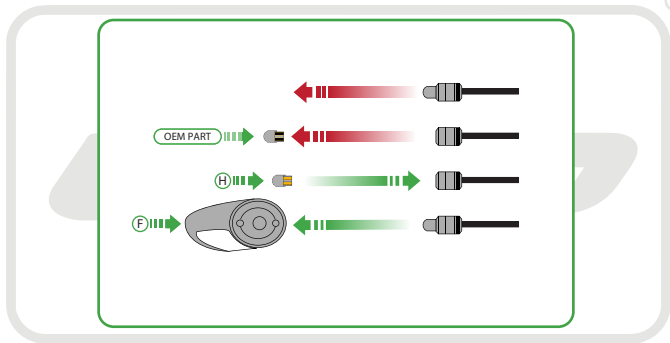
Remove 3 rubber grommets
including 2 brass washers

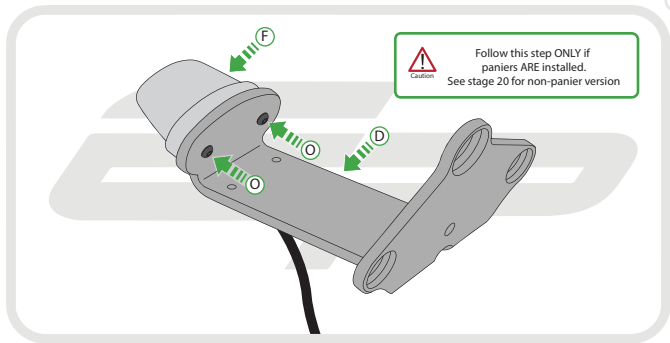


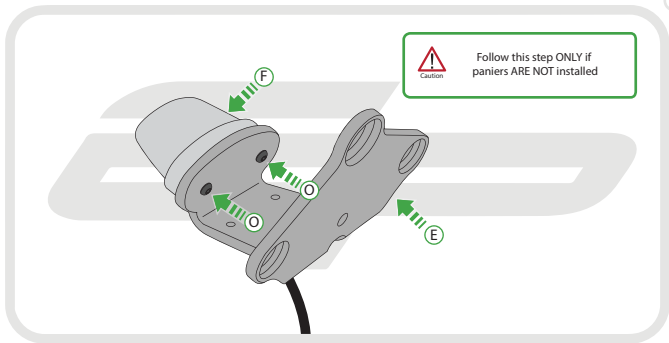
EVOTECH[®]
P E R F O R M A N C E













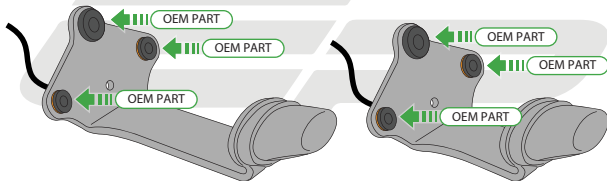
Caution

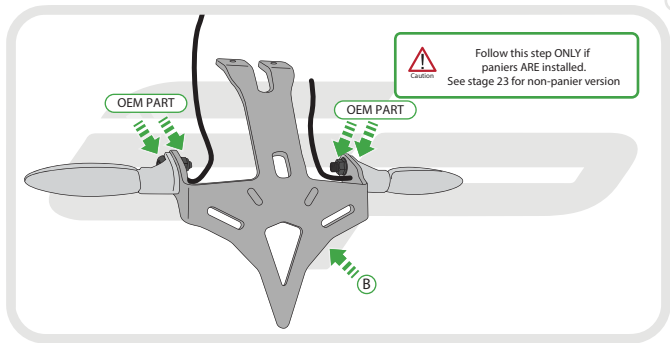
Push rubber grommets through in direction shown

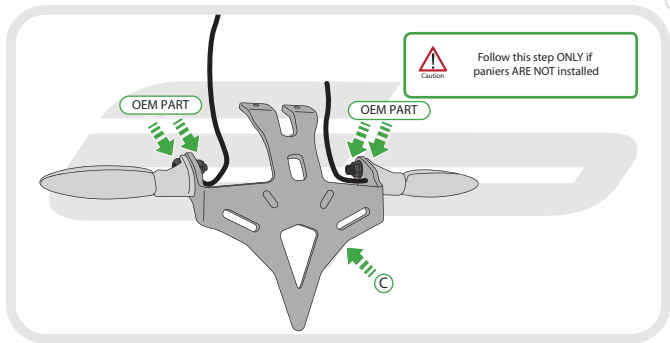


Caution

Follow this step for both panier and non-panier versions





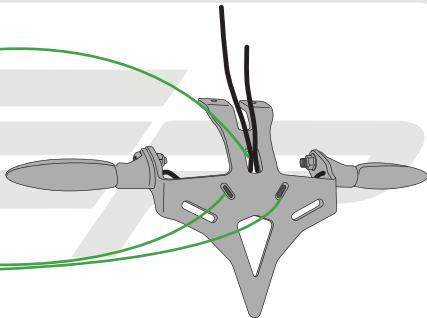


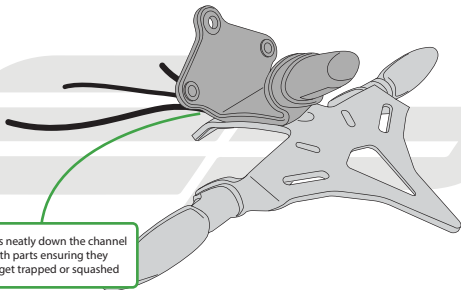


Feed wires through
slot in tail tidy



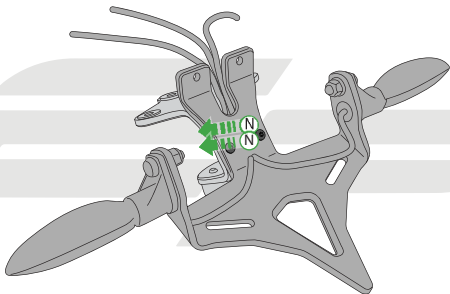
Feed cable tie through tail tidy
so the head sits inside the
slot on the outer face



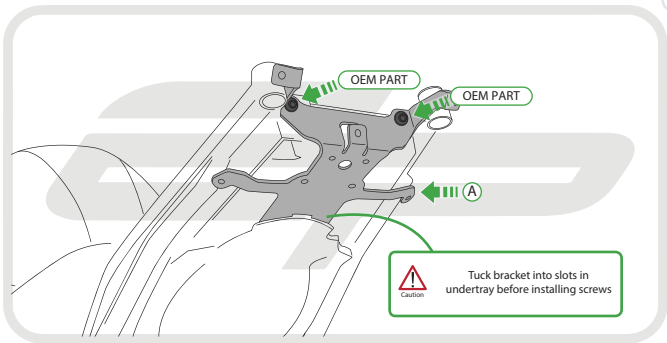


Caution

Run wires neatly down the channel
in both parts ensuring they
do not get trapped or squashed



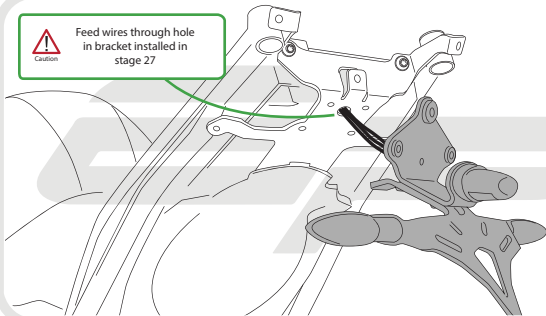
EVOTECH[®]
P E R F O R M A N C E



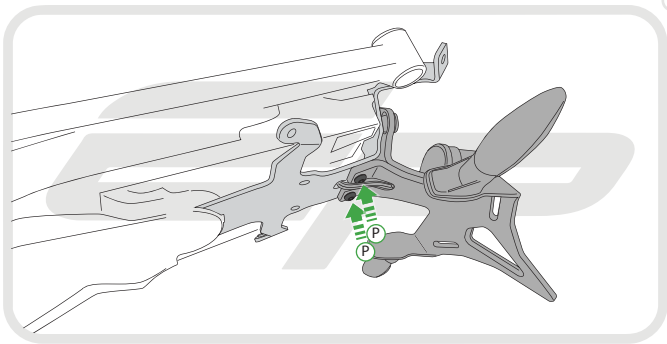


Caution

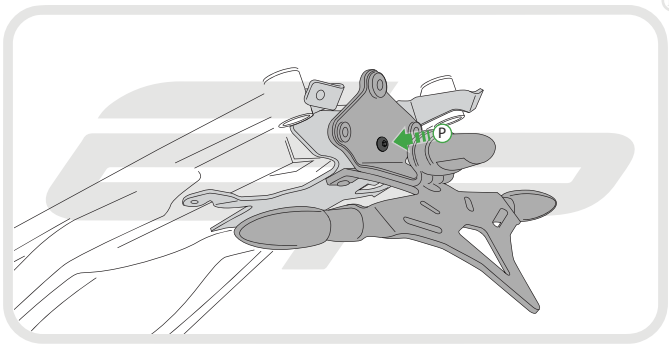
Feed wires through hole
in bracket installed in
stage 27



EVOTECH[®]
P E R F O R M A N C E



EVOTECH[®]
P E R F O R M A N C E



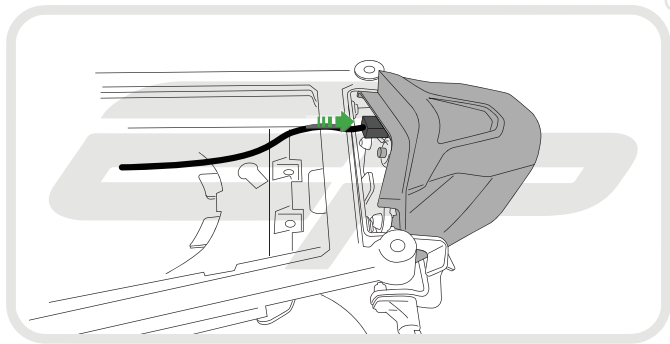


®

OEM PART

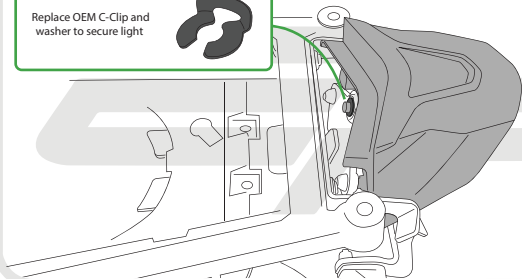
Ensure all three pins push firmly
into rubber grommets.
Top pin should be visible.

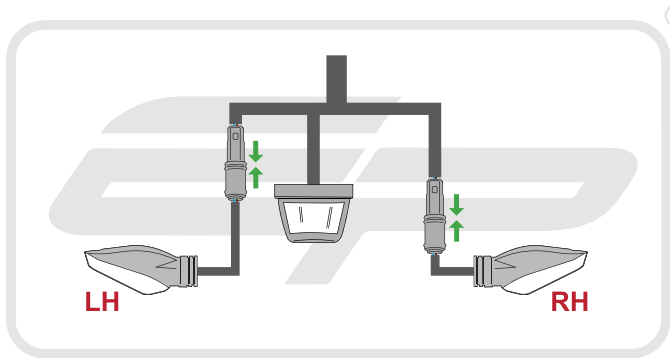
EVOTECH[®]
P E R F O R M A N C E





Replace OEM C-Clip and washer to secure light



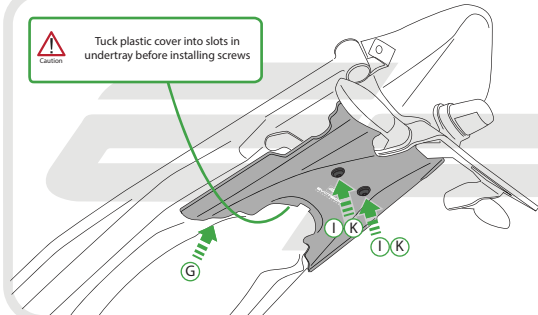




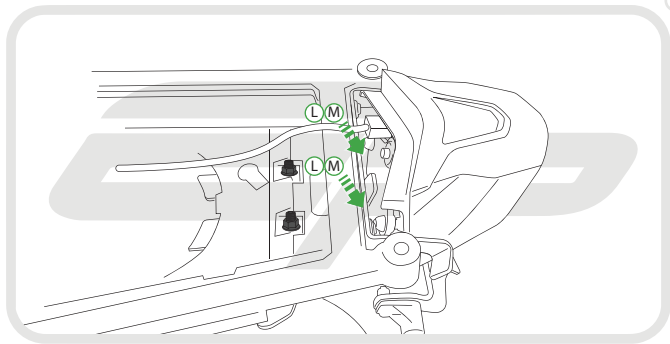
®



Tuck plastic cover into slots in undertray before installing screws



EVOTECH[®]
P E R F O R M A N C E



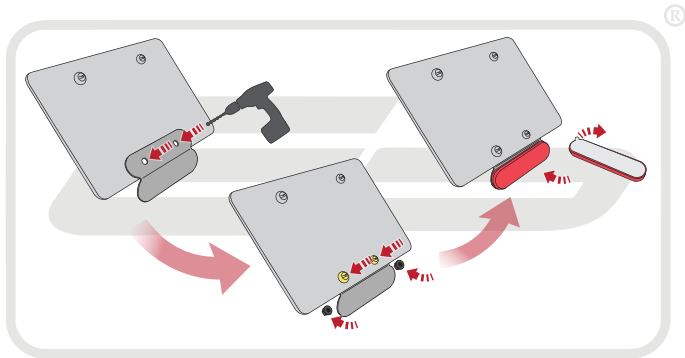
EVOTECH[®]
P E R F O R M A N C E



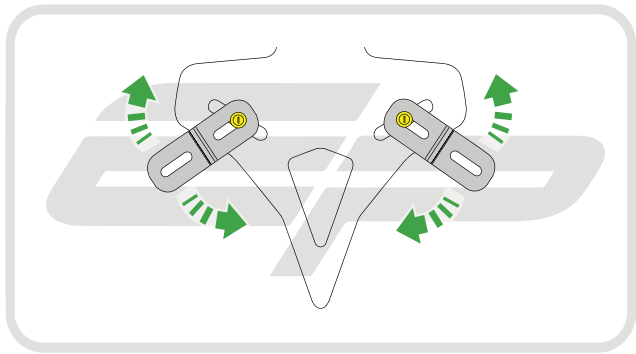
Reverse Stages

9 - 1

Reflector Bracket Installation



EVOTECH[®]
P E R F O R M A N C E





ESSENTIAL CHECKS

After installation of your tail tidy ensure that the licence plate does not contact the rear tyre when suspension is fully compressed.

Ensure all electrics including indicators, tail light, brake light and licence plate light lights are working correctly before riding the motorcycle.

It is recommended that periodic inspections are made to ensure that all fixings are fully tightend.



EVOTECH®
P E R F O R M A N C E

www.evotech-performance.com