

**2015-17 CDC Outlaw Switchback Upper Grille
GT, V6, and Ecoboost Models. Does not fit GT350.**

CDC# 1511-7015-01



Note: READ instructions before starting installation!!!

Components:

- 1 – Grille Assembly
- 10 – Zip Ties
- 2 – Scotchlok Connector (red)
- 2 – Plug and Play Harness
- 2 LED Drivers
- 1 – Silicon Dielectric Compound

CDC Part#

- 115063
- 5047
- 1511-2012-01
- 1511-2010-01

Tools Required:

- Panel Removal (fork tool) •7mm Socket •1/4" drive ratchet •1/4" Drill •Drill motor
- 8mm Socket •Jack Stands •Jack •Side Cutters

CD4II3DQ

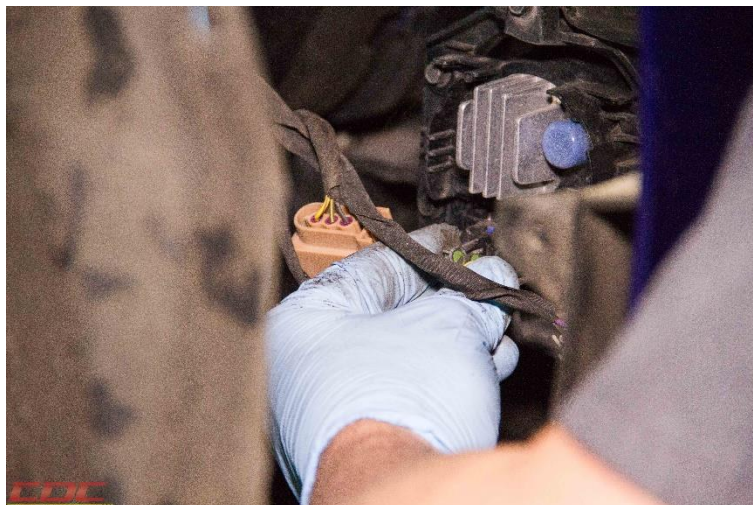
1. Lift car with hoist, or safely place on jack stands and remove both front wheels.



2. Remove Plastic Retainers on the forward half of the wheel liners to gain access to the connectors and Fender/Fascia fasteners.



3. Unplug driving light and turn signal Connectors, (3 per side).



CD4II3DQ

4. Remove the Fascia/Fender bolts. Use a ¼" drive ratchet and 7mm socket.



5. Remove Radiator Cover. Remove all the Plastic Retainers, and remove Cover from vehicle.

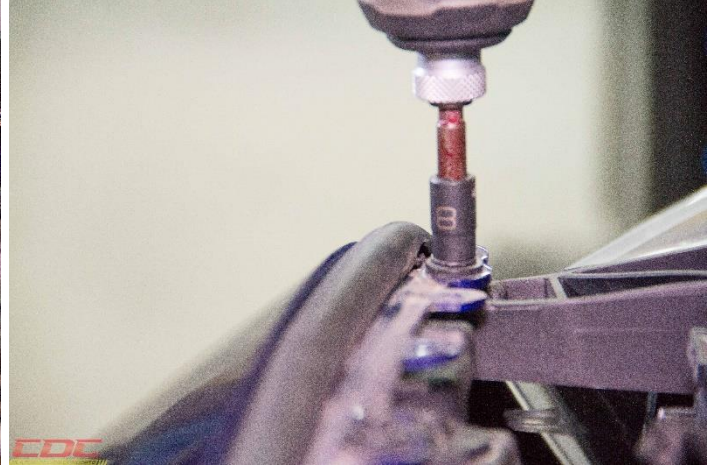


6. Remove the (2) 5.5mm bolts at the corners of the Fascia, located near the Headlights under the rubber Hood Seal.

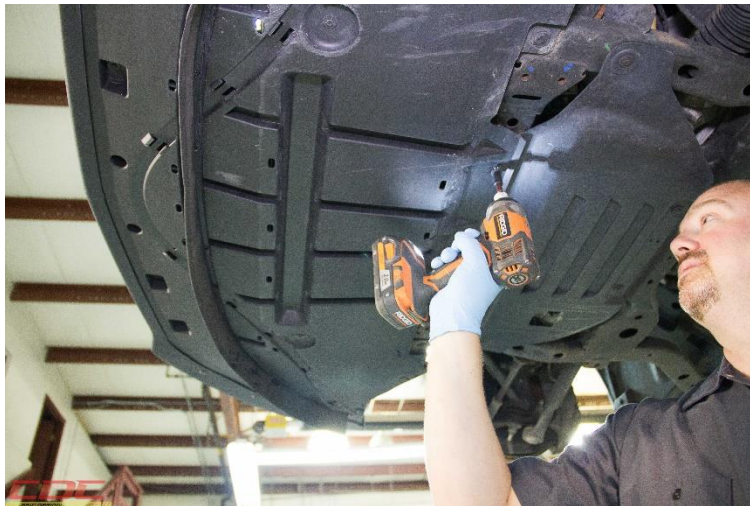


CD4II3DQ

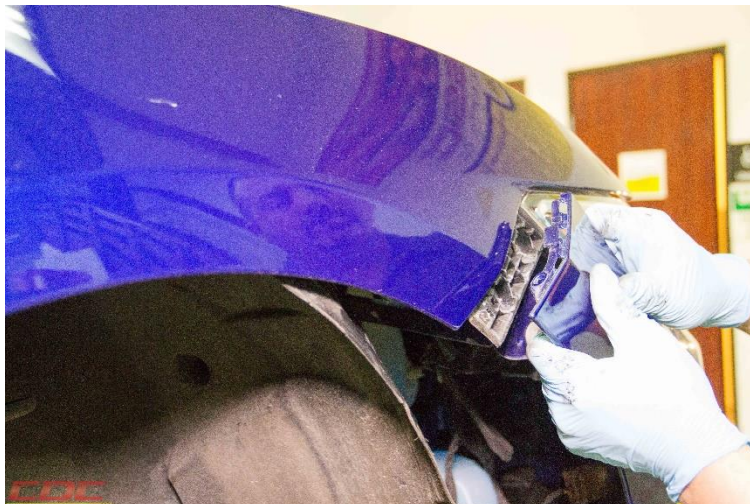
7. Remove the (6) 8mm coarse thread bolts from the front top of the Fascia.



8. Remove the Plastic Retainers and 7mm bolts that secure the Splash Shield to the bottom side of the car.



9. Release Fascia from Fender by gently pulling outward, and remove Fascia assembly from vehicle.



CD4II3DQ

10. Remove Bumper Impact absorber from Fascia.



11. Remove Stock Grille from Fascia. Use a Flat Screw Driver or Panel Tool to help disengage the Clips.

12. Install CDC Outlaw Switchback Grille. **Note:** Make sure all of the Clips are aligned before snapping into place.

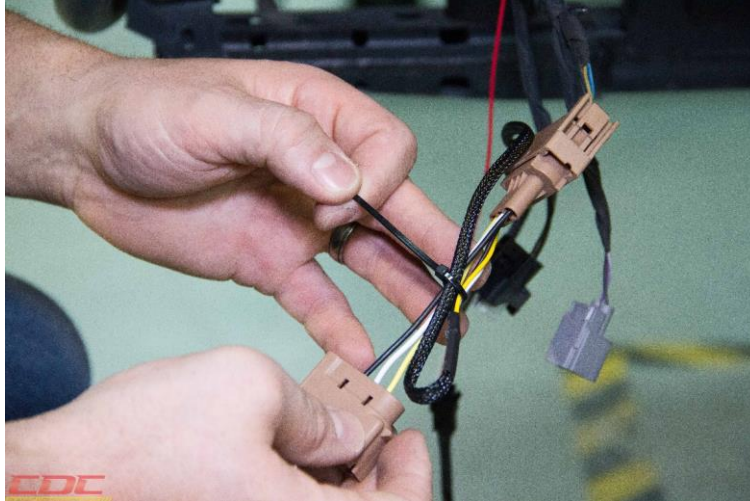
13. Reinstall Impact Absorber.

14. Drill $\frac{1}{4}$ " Hole at each corner of the Impact Absorber. Route LED wiring as shown and attach wire to Absorber with included Zip Tie. Cut excess length of Zip Tie.

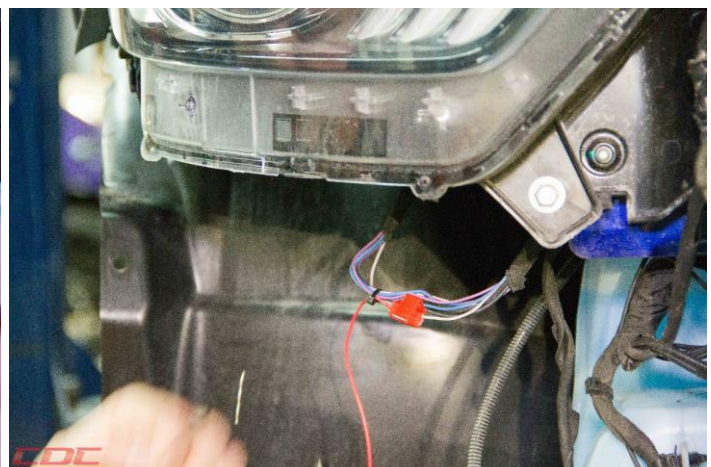
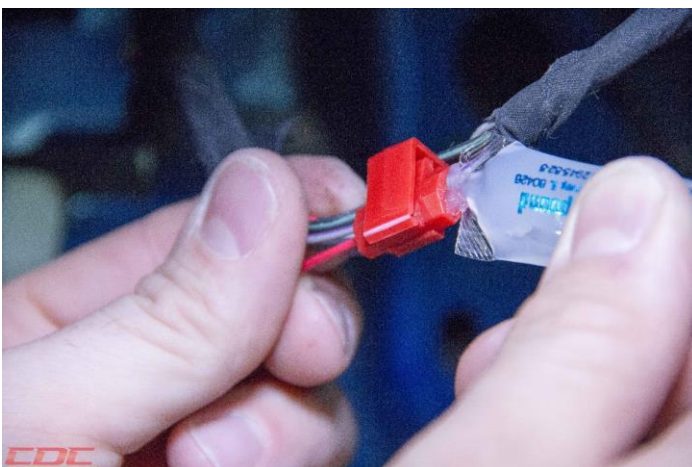
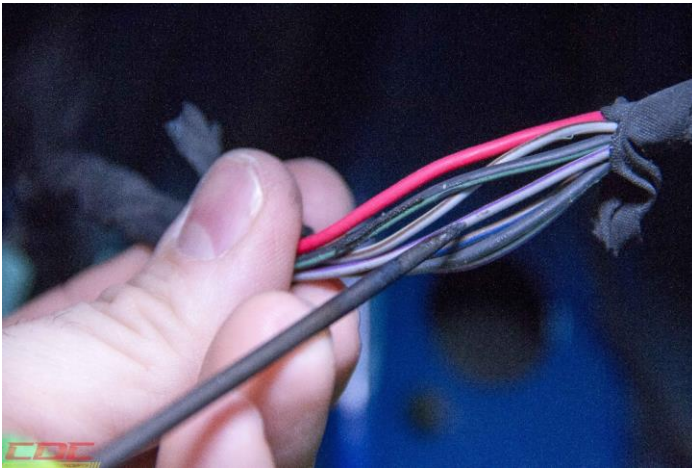


CD4II3DQ

15. Plug the Plug and Play Harnesses into the Turn Signal Connectors and secure wires with Zip Ties as shown.

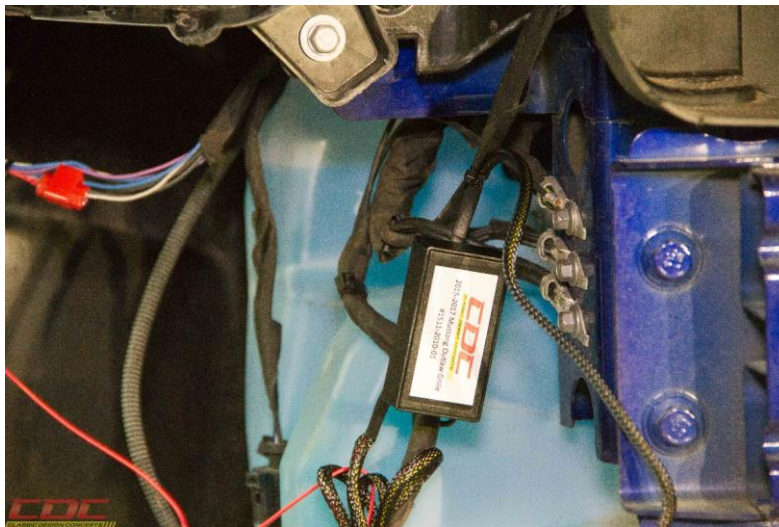
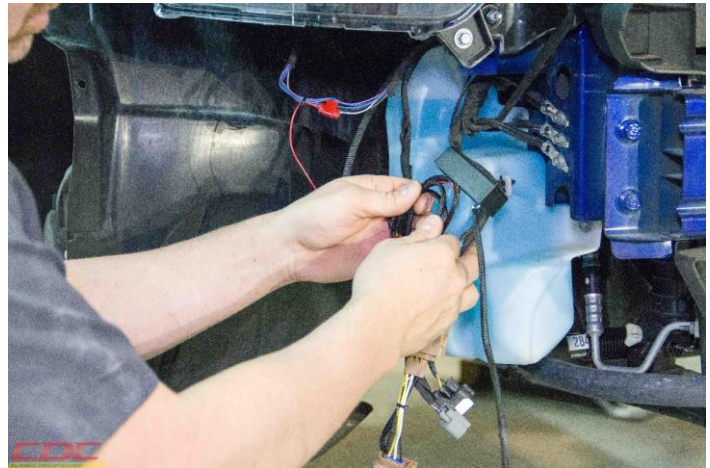
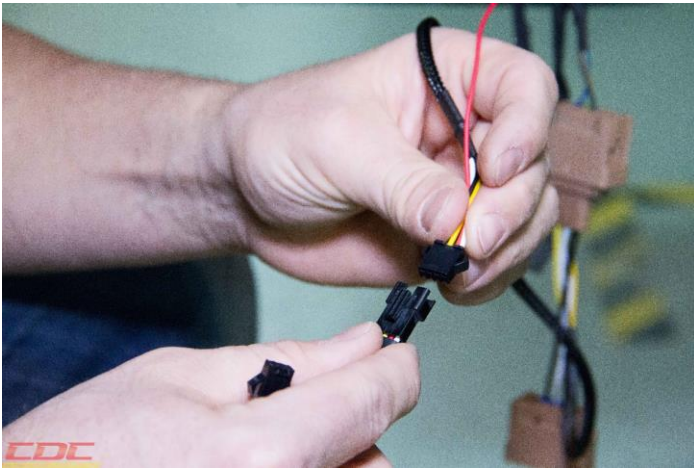


16. **OPTIONAL:** Connect the AutoDim (**RED**) wires. Strip back approximately 2"-3" of the black wire loom of the Headlight wiring Harness (be very cautious not to damage any wires). Locate the **GREY** with **PURPLE** stripe wire. Use the provide Inline splicer to connect the **RED** Pigtail Wire to the **Grey** with **Purple** stripe wire. Use the provided Silicon Dielectric Compound to seal the connectors. Zip Tie the wire to the **RED** wire to the Headlight Harness, and trim excess Zip Tie.

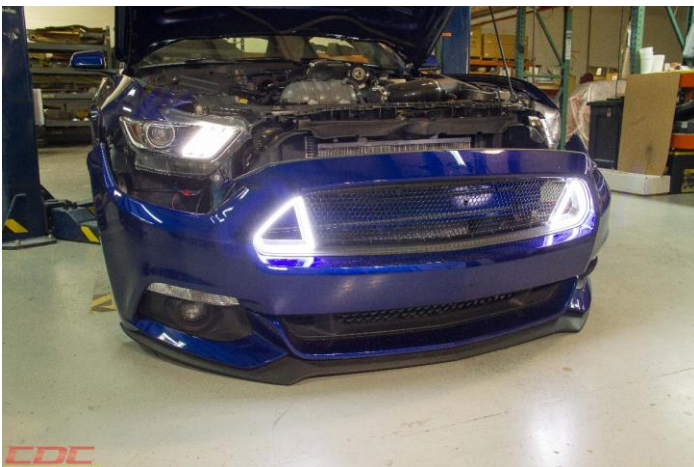


CD4II3DQ

17. Plug in the Drivers in to the Plug and Play harnesses. Secure the Drivers and extra wires with provided Zip Ties.



18. Place Fascia close to the Car and plug in the Drivers to the LED's. Test the function of the Outlaw Grille Lights. **Note:** The AutoDim feature (dims the DRL's about 40% when the Headlights are on), requires the car to be running.



CD4II3DQ

19. Reinstall the Fascia, Splash Shield, Radiator Cover, Wheels Liners, and Wheels/Tires. **Note:**
Torque wheels to factory specs.



Thank you for choosing Classic Design Concepts for your restyling needs. If you have any questions or concerns regarding installation, please contact Tech@CDCdetroit.com or call 866-624-7997.

ORIGINATOR: NA
APPROVAL:

REVISION DATE:
ISSUE DATE: 4/25/17

REVISION LEVEL: Release
PAGE: 8 of 8