

Spec Sheet for LiteShelf Floating

LiteShelf Floating is a floating shelf that creates a bright area under it with the LiteShelf technology. It is manufactured by the **SuperLightCo** in Brooklyn, NY. Available in 4 standard finishes and unfinished, Floating adds to every room. It is also available in any custom size up to 16" deep and 48" wide, and as small as 4" by 4". LiteShelf Floating can be used as a shelf, as a mirror light or as a bed light. Floating can be covered with any HPL (Formica or Wilsonart) or wood veneer to match the décor of any room. The result is a floating shelf that creates a bright area under it. LiteShelf Floating can rest on our proprietary Floating bracket system, or for retail applications, on most slatwall knife brackets.

Standard Sizes

Dimensions	Item #	Color suffixes
20" Wide x 6" Deep	LF20X6	
24" W x 8" D	LF24x8	U - Unfinished
24" W x 10" D	LF24X10	W - White Barn
30" W x 6" D	LF30X6	S - Storm
30" W x 12" D	LF30X10	C - Cafelle
36" W x 12" D	LF36X12	A - Asian Barn

Custom Sizes

Colors

LF24X8S

24" x 8"

Floating Shelf

Finished in Storm

LiteShelf - Floating - Width - Depth - Finish

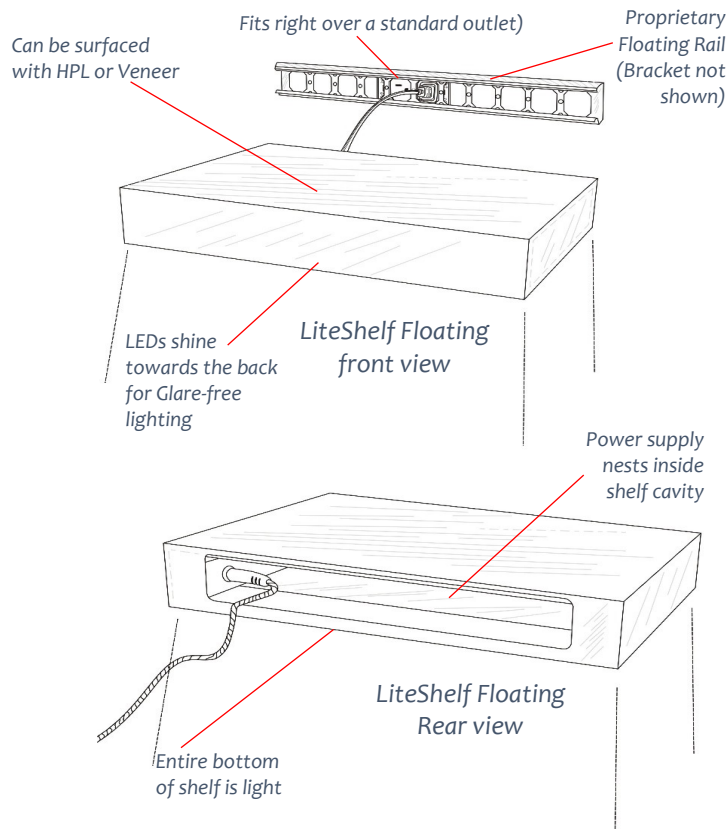
U - Unfinished

W - White Barn

S - Storm

C - Cafelle

A - Asian Barn



Custom Color available upon request

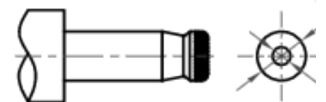
Floating Bracket



Floating Rail



Barrel type power connector



Center positive polarity



FEATURES

INTENDED USE — LiteShelf Floating is a floating shelf that creates a bright area under it with the LiteShelf technology. The Edge-to-Edge light creates a clean, versatile style and excellent volumetric distribution. High efficacy LED light engines deliver energy savings and low maintenance compared to traditional sources. An extensive selection of standard sizes and customization options make Floating an excellent architectural add-on. It is a lighting source that is suitable for all applications including homes, schools, offices and other commercial spaces, retail, hospitals and healthcare facilities.

CONSTRUCTION — The diffuser for Floating is machined out of solid clear acrylic for full clarity. The refractor is adhered in a proprietary manner for improved aesthetics and increased light diffusion. LEDs are adhered directly to the light transmitting material for consistent color and low loss transmission. The box uses solid pine and plywood for strength.

OPTICS — Direct illumination is achieved by concentrating the light down and forward, creating an optimal mix of light to vertical and horizontal work surfaces – rendering a usually shadowy space into a more balanced, complimentary luminous environment. This also prevents glare to the user. The unique one-sided light conceals LEDs to efficiently deliver light in a volumetric distribution.

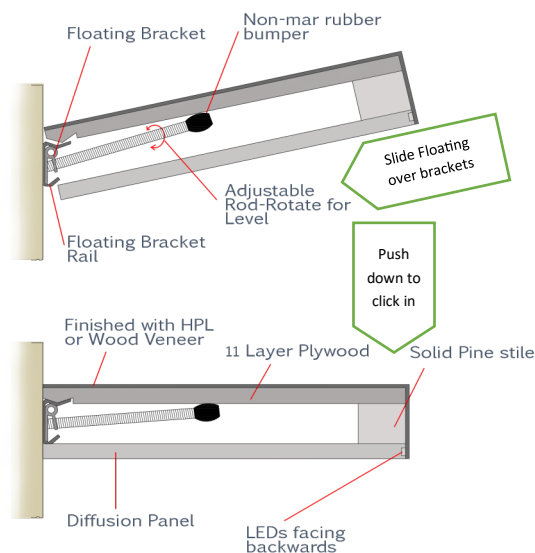
ELECTRICAL — Long-life LEDs, coupled with high-efficiency drivers, provide superior quantity and quality of illumination for extended service life with 70% LED lumen maintenance at 50,000 hours (L70/50,000).

INSTALLATION — Floating is installed using our proprietary **Level-n-Clip** bracket, with **Load to Stud** technology. Floating is NOT suitable for a damp location.

LISTINGS — UL Listed to meet U.S. and Canadian standards.

WARRANTY — 5-year limited warranty.

NOTE: Actual performance may differ as a result of end-user environment and application. All values are design or typical values, measured under laboratory conditions at 25°C



SPECIFICATIONS

MODEL	Floating
OUTPUT	440 Lumens per Linear Foot
Candela at 18"	40 cd
POWER CONSUMPTION	5 watts per Linear Foot
THICKNESS	2.5" +/- 0.06"
OPERATING VOLTAGE	24Vdc
DIMMABILITY	With a Dimmer
OUTPUT COLOR	Neutral (4000k)
WEIGHT	4.3 Lbs (1.95 kg) / SqFt
MIN. SIZE	4 x 4" (102 x 102 mm)
MAX. SIZE	16" x 48" (406 x 1219 mm)
OPERATING LIFESPAN	50,000 to 70,000 HOURS (L70)
WARRANTY	5 YEAR WARRANTY
CONNECTOR	2.5mm x 5.5mm PLUG n PLAY
INPUT JACK LOCATION	Inside the shelf cavity
OPERATING TEMP	-30°C (-22 °F) ~ +40 °C (+104 °F)
POWER SUPPLY SPECS	AVAILABLE UPON REQUEST

Accessories for LiteShelf Floating

FBracket-6	Floating Bracket with 6" Rod	required every 16"
FRail-16	Floating mounting Rail for 20"W shelf	
FRail-20	Floating mounting Rail for 24"W shelf	
FRail-26	Floating mounting Rail for 30"W shelf	Works with Floating Bracket
FRail-32	Floating mounting Rail for 36"W shelf	
FRail-1	Floating mounting Rail by the inch	
PGST18	18 watt power supply for PLUG-IN	48" of LiteShelf
PGST36	36 watt power supply for PLUG-IN	96" of LiteShelf
CH55s	Adaptor to connect Hardwire	12" pigtail
PAPV12	12 watt power supply for HARDWIRE	32" of LiteShelf
PAPV36	36 watt power supply for HARDWIRE	66" of LiteShelf
PLPV100	100 watt power supply for HARDWIRE	264" of LiteShelf
PLPV150	150 watt power supply for HARDWIRE	400" of LiteShelf
PPWM60	60 watt DIMMABLE power supply for HARDWIRE	160" of LiteShelf

Superlative
Most Excellent Lighting Products

