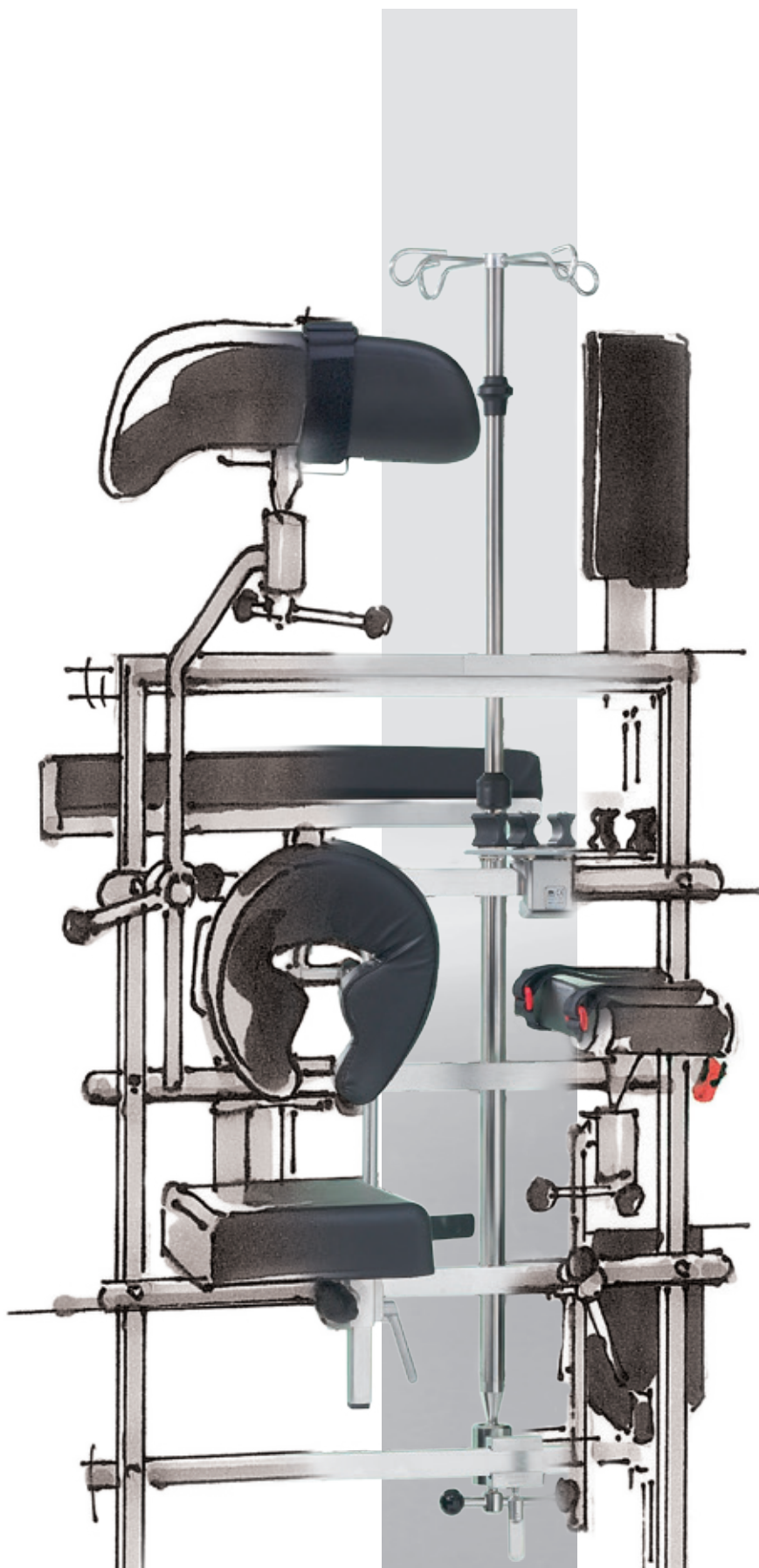


Accessories for DIAMOND and OPX mobilis® operating tables



SCHMITZ

A Sense of Confidence



Contents

General accessories page 4-9

Accessories for orthopaedics, traumatology, spinal surgery and orthopaedic extension page 10-12

Carbon fibre accessories page 13

Extension device page 14-19

Accessories for head positioning and neurosurgery page 20-21

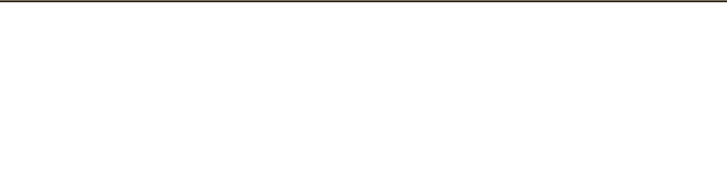
Accessories for Gynaecology and Urology page 22-23

Positioning Aids page 24-25

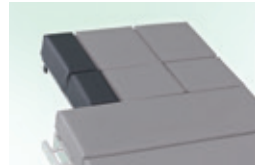
Special accessories page 26

Overview of accessories page 27

Note!
You will find the basic accessories (head and leg plates) as well as the control elements (hand and foot control) in the main catalogues for the OR tables series **DIAMOND** and **OPX mobilis**.



1



2



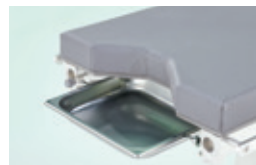
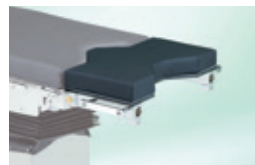
3



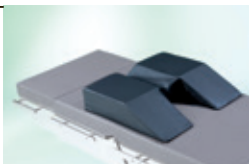
4



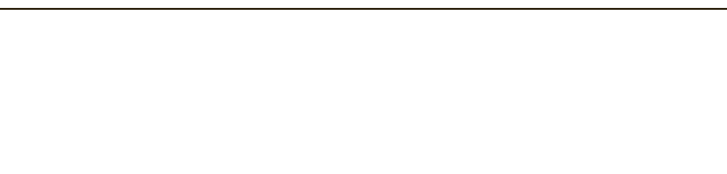
5



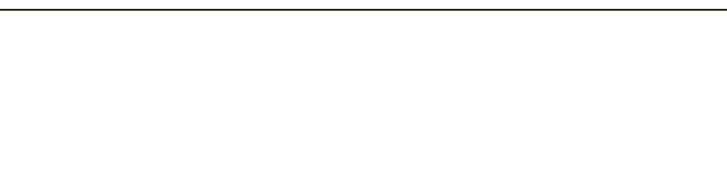
6



7

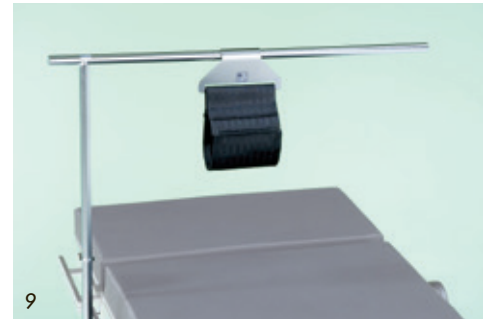
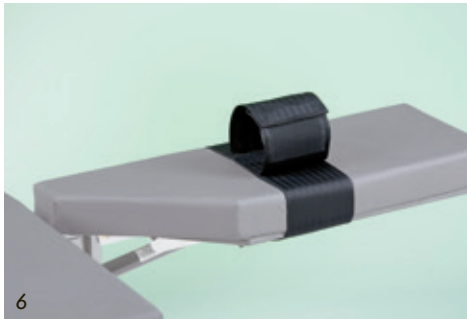



8



9

General accessories



1
Arm rest 101.0192.0 
 for an easy and quick positioning of the patient's arm in any position, adjustable in any direction by means of only one star handle, foam pad with antistatic cover, 450mm long, with arm strap and attachment clamp, stainless steel.

2
Arm rest 101.0019.0 
 covered foam pad, antistatic, 450 mm long, with arm strap and attachment clamp, horizontally and vertically adjustable, tiltable via ball-and-socket joint, stainless steel.

3
Arm rest 101.0109.0
 covered foam pad, antistatic, height adjustment range: 80 mm, one-touch swivelling through 360°, turning and tilting up to +/- 35°, incl. stainless steel clamp, 600 x 170 mm (W x D).

4
Wristlet 101.0123.0
 with stainless steel clamp, washable and exchangeable textile strap, hook-and-loop fastener.

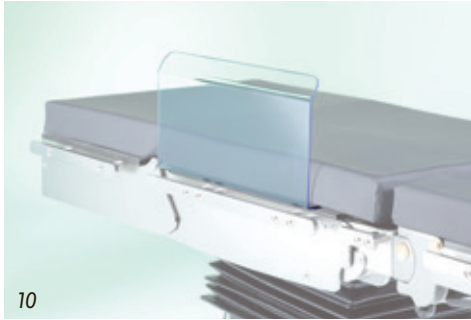
5
Body restraint strap 101.0177.0
 with stainless steel attachment elements, washable and exchangeable, hook-and-loop fasteners.

6
Leg restraint strap 101.0164.0
 washable tissue strap with hook-and-loop fastener, for leg fixation, for split leg sections.

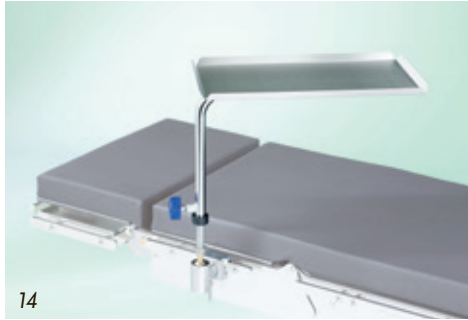
7
Anaesthetic frame 101.0012.0
 stainless steel, with twist protection, height adjustable, with swivelling clamp 101.0146.0.

8
Anaesthetic frame extension 101.0111.0
 for anaesthetic frame 101.0012.0, swivelling and laterally adjustable, length 300 mm.

9
Wristlet 101.0137.0
 for attachment to anaesthetic frame 101.0012.0, washable and exchangeable textile strap with hook-and-loop fastener, stainless steel attachment.



10



14



11



15



16



12



17



13



18

10

Arm protector* 101.0153.0

comfortable for the OR staff positioned at the side of the OR table, safe protection and anatomically correct positioning of the patient's arm by the protector, which is pushed under the OR table pad and secured by the patient's weight, 400 x 230 x 210 mm (W x D x H).

11

Infusion pole 101.0139.0

stainless steel, upper section with 4 hooks, height adjustable, attachment clamp with ball-and-socket joint.

12

Attachment clamp 101.0018.0

stainless steel, swivel type, with quick release and lock, suitable for poles of 16 to 18 mm diameter.

13

Attachment clamp 101.0117.0

stainless steel, non-swivel type, with release and lock, suitable for square-section poles 20 x 20 mm.

14

Instrument serving table* 101.0166.0

fixing to the side rail by means of attachment clamp, height adjustable 250 mm and swivelling via self-locking ball-and-socket joint, thus always ensuring horizontal positioning of the tray, safe working load approx. 6 kg, dimensions of tray: 450 x 260 mm (W x D).

15

Flexible anaesthetic frame* 101.0125.0

2000 mm long, 2 attachment clamps 101.0146.0 required!

16

Tube holder* 101.0154.0

for secure positioning of ventilation tubes and monitor cables, helix flexible shaft, height adjustable, with robust plastic plate. Requires attachment clamp 101.0146.0!

17

Attachment clamp 101.0132.0

non-swivel type, suitable for poles of 16 to 18 mm diameter and square-section poles of 10 x 25 mm, stainless steel.

18

Attachment clamp 101.0146.0

swivel type, suitable for poles of 16 to 18 mm diameter, stainless steel.

General accessories


1
Shoulder support (pair) 101.0010.0
 incl. 2 clamps 101.0117.0, 2 antistatic pads (120 x 200 mm) and 2 attachment bars to adjust pads horizontally and vertically.

2
Lateral support (1 piece) 101.0107.0
 simple version, including attachment clamp to side rail, smooth antistatic pad (100 x 215 mm).

3
Rectoscopy/Buttocks support 101.0178.0
 adjustable in width, with soft pad, for rectal positioning and spinal surgery.
 Requires 2 clamps 101.0018.0 or 101.0146.0!

4
Knee/foot rest 101.0186.0
 for DIAMOND operating tables, for rectal and spinal surgeries with the patient in knee/ elbow position, serves also as foot rest for laparoscopic surgery, to be fixed to leg section, including 2 attachment clamps 101.0132.0.

Knee/foot rest 101.2070.1
 similar to 101.0186.0, but for mobilis Operating tables. (w/o ill.)

5
Handles (pair) 101.0586.0 
 to be mounted to the head plate, for an easy moving of the operating table.

6
Bracket for body support 101.0121.0
 (fig. 1) for attachment of pads 101.0135.0, 101.0151.0, 101.0162.0 and 101.0175.0, allows double swivelling and horizontal as well as vertical adjustment of the supports, includes clamp 101.0117.0.

Body support roll 101.0135.0
 (fig. 2) integral foam pad, antistatic, 200 x 65 mm.

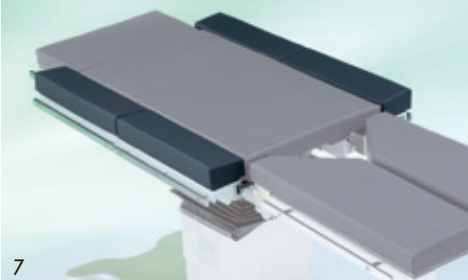
Shoulder/lateral support 101.0151.0
 (fig. 3) concave foam pad with antistatic cover, 215 x 100 mm.

Back/buttock support 101.0162.0
 (fig. 4) with antistatic cover, 200 x 120 mm.

Pubis/sacrum/sternum support 101.0175.0
 (fig. 5) foam pad, with antistatic cover, 85 x 85 mm.



ill. shows 2 sets of 101.0194.0



7



8



7
Set of extension pads* 101.0194.0
set of 2 foam pads with antistatic cover, 500 mm long, for seat and back section, attachment to side rails via quick-locking clamps, with addit. side rails for accessories. For positioning of adipose patients as well as positionings in which patients have to be turned during intervention. New total width of table-top: 800 mm.

Set of extension pads* 101.0200.0
similar to extension pads 101.0194.0, but 300 mm long (w/o ill.)

8
Foot rest (pair)* 101.0202.0
attachment to the side rails by means of integrated clamps, width adjustable from 430 to 735 mm, can be folded down to serve as a table-top extension, 250 x 200 mm (H x W).



9

9
Rack for accessories 101.0120.0
stainless steel square-section tubular frame with 5 rails for attachment of accessories and 1 basket, antistatic swivel castors, overall dimensions: 630 x 580 x 1430 mm (W x D x H)



10

10
Rack for storing of head and leg plates 101.0410.0
for DIAMOND operating tables, stainless steel square-section tubular frame with 6 pairs of mounting devices for head and leg plates as well as shoulder plates and gyn./uro. adapters, 2 standard rails and 1 basket. El. conductive swivel castors. Total dimensions: 918 x 1243 x 1308 mm (W x D x H)

General accessories

1
Leg restraint strap* 101.0185.0
 1 pair, with pads, for split leg section, incl. attachment clamps to attach to side rails, length: 1200 mm.

2
Transfer leg plates (pair) 101.0218.0
 in combination with the attachment device for orthopaedic extension device, for DIAMOND operating tables: also attachment to seat section instead of leg section.
 Bent stainless steel tube with fabric cover, lightweight construction. For anaesthetization of patients for gynaecological or urological interventions or for interventions using the extension device.
 Length of leg plates: 875 mm

3
Transfer leg plates (one-section) 101.0400.0
 for DIAMOND operating tables, attachment at seat section instead of leg section. Similar to transfer leg plates 101.0218.0, but one-section.

4
CFRP crossbar 101.2950.0
 for mobilis operating tables, installed at back section, radiolucent.


CFRP crossbar 101.0222.0
 installed at back section, radiolucent.
 For DIAMOND 60 BG only! (w/o ill.)

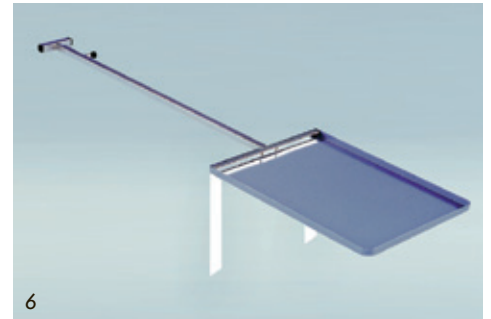
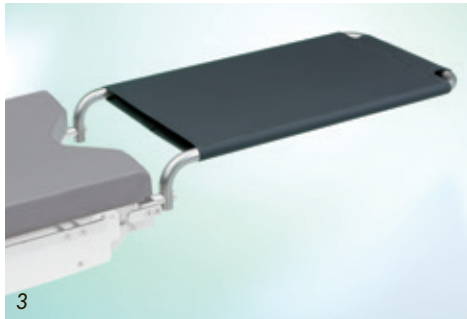
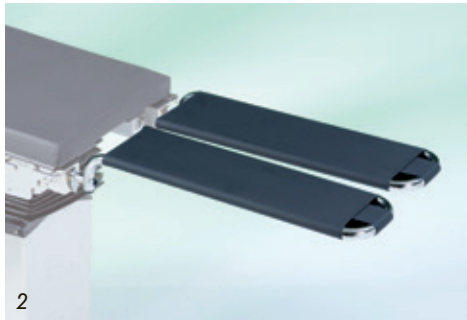
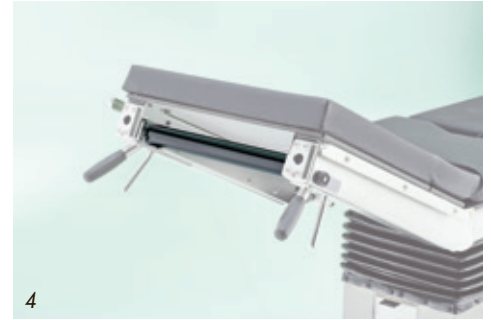
Potential equalization cable 101.0220.0
 3 m long (w/o ill.)

Potential equalization cable 101.0230.0
 5 m long (w/o ill.)

5
Foot control 101.6400.0
 for mobilis RC operating table models. Cast aluminium casing, sealed against ingress of fluids, antifiskid, cable-connected. For all table adjustment functions analogous to its hand-held control. Activation key and „Return to zero“ key. Can be connected to the table at the same time as the hand-held control unit (factory-provided equipment).

6
Cassette carrier 101.2810.0
 for mobilis operating tables, for X-ray cassettes of max. 350 x 430 mm, telescopic insertion bar of stainless steel.

Cassette carrier 101.0228.0 
 similar to 101.2810.0,
 for DIAMOND operating tables
 (w/o ill.)



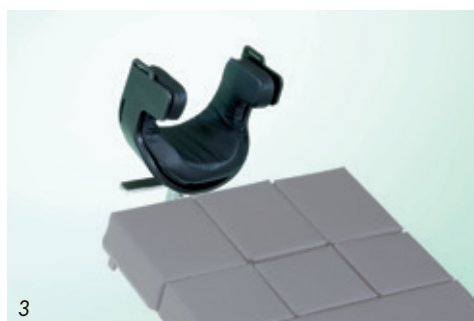
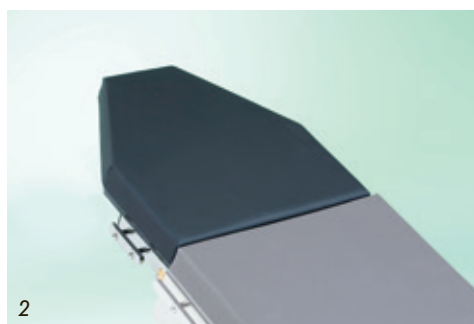
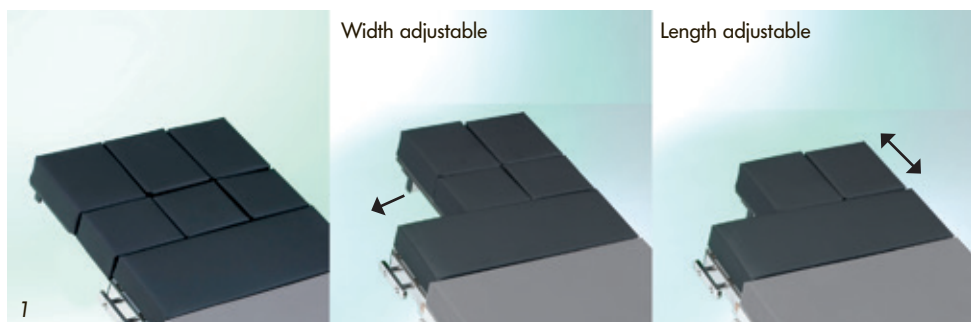


Schmitz Integration Module 101.0420.0

Module with Bluetooth technology to connect the DIAMOND OR table to the OR1™ NEO central control system for operating theatres by Karl Storz company. Bidirectional data transfer, graphics-supported menu navigation with TFT display for all status information of the table, integrated service and information menu, automatic configuration of all table variants. Attention! The relative DIAMOND operating table absolutely has to feature Bluetooth preparation 101.0390.0!

For further information on the Bluetooth functions of the DIAMOND operating table series, please see our catalogue no. 84.

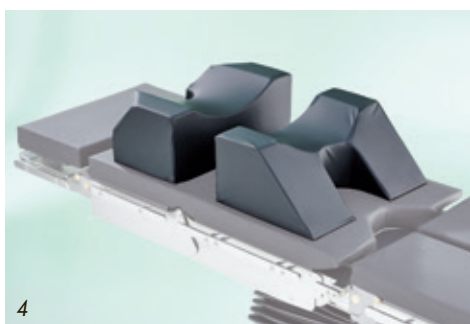
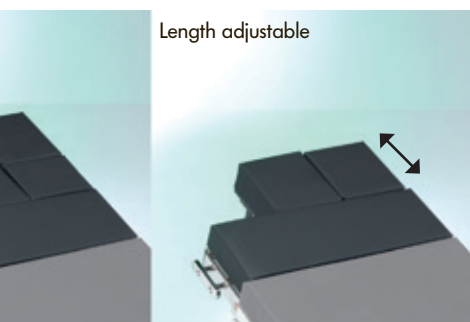
Accessories for orthopaedics, traumatology, spinal surgery and orthopaedic extension



1
Shoulder arthroscopy plate 101.0209.0
for DIAMOND 50 and 60 operating table models. Attachment instead of leg plate, with individually detachable lateral pads for free access to the shoulders, with side rails. Requires connecting piece 101.0167.0 or 101.0187.0 and shaped head rest 101.0013.0.

2
Shoulder plate 101.0210.0
for DIAMOND 50 and 60 operating table models, for ENT, oral and maxillofacial surgery and ophthalmology, attachment instead of leg plate, with side rails. Requires connecting piece 101.0167.0 or 101.0187.0 and shaped head rest 101.0155.0.


3
Shaped head rest for shoulder surgery 101.0013.0
U-shaped helmet with soft pads and 2 fastening straps with hook-and-loop fastener. Safe positioning and lateral fixation of the head while the patient is anaesthetized. Adjustable to varying head sizes, detachable pad. Safe working load: 11 kg. Requires connecting piece 101.0167.0 or 101.0187.0 for attachment to the shoulder arthroscopy plate 101.0209.0.



4
Cushion* 101.0015.0 
for intervertebral disc operations, two-sectional for individual adaptation to the patient's body size, radiolucent, antistatic. Thoracic cushion 500 x 250 x 200 mm (W x D x H), pelvic cushion 500 x 340 x 200 mm (W x D x H).

5
Knee arthroscopy support* 101.0212.0
manually adjustable, with gel pad and fastening strap. Side rail attachment (requires attachment clamp 101.0146.0). Safe working load: 25 kg.



6
Knee arthroscopy support* 101.0583.0 
for side rail attachment, incl. attachment clamp and pads, manual adjustment. The diameter is adjustable by hand crank and adapts also for severely obese patients. Safe working load: 40 kg.

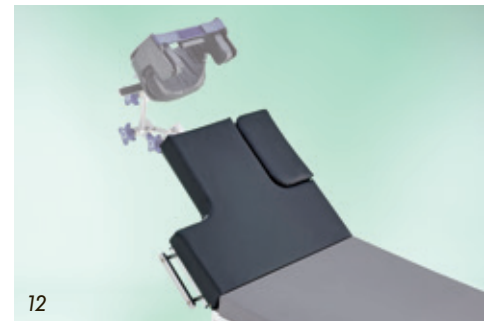
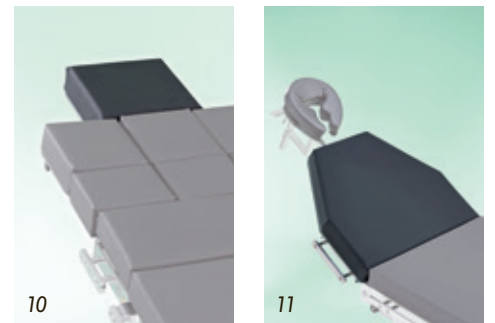
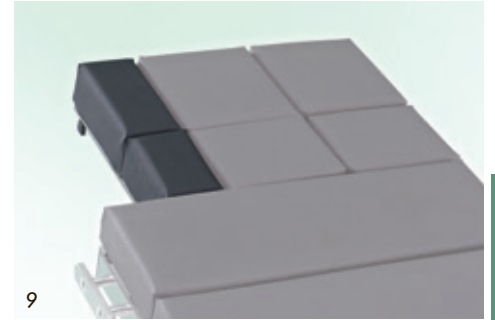
7
Knee-elbow positioning device 101.0150.0
for DIAMOND operating tables, attachment at the back section, for knee-elbow positioning of the patient for spinal surgery, covered foam pad, antistatic, height adjustment 200 mm by means of hand crank, with side rails. Safe working load: 135 kg. 510 x 500 x 120 mm (W x D x H).

8
Lateral support pad (piece) 101.0190.0
for DIAMOND operating tables, lateral support of patient, attachment to the knee-elbow positioning device 101.0150.0 by means of clamp (incl.).



9
Padded segments for shoulder arthroscopy plate (pair) 101.0440.0

smaller padded segments for shoulder arthroscopy plate 101.0209.0, for attachment instead of standard segments.



10
Small headrest 101.0207.0
 for use e.g. in anaesthesia induction using the shoulder arthroscopy plate or the universal adapter. Headrest with 70 mm thick SAF pad (for shoulder arthroscopy plate 101.0209.0 or 101.2790.1)

11
Shoulder plate 101.2780.1
 for mobilis operating tables, for ENT, oral and maxillofacial surgery and ophthalmology, attachment instead of leg plate, adjustable with gas spring assistance, with side rails. Requires connecting piece 101.0167.0 or 101.0187.0 and shaped head rest 101.0155.0.

12
Shoulder arthroscopy plate 101.2790.1
 for mobilis operating tables, attachment instead of leg plate, adjustable with gas spring assistance, with individually detachable lateral pads for free access to the shoulders, with side rails. Requires connecting piece 101.0167.0 or 101.0187.0 and shaped head rest 101.0013.0.

Accessories for orthopaedics, traumatology, spinal surgery and orthopaedic extension

1
Arm/hand operating table 101.0108.0
 radiolucent CFRP board with covered antistatic foam pad, ergonomic shape for optimal access to the surgical field, 815 x 520 mm (W x D).
 Without the support bar, load capacity up to 25 kg.

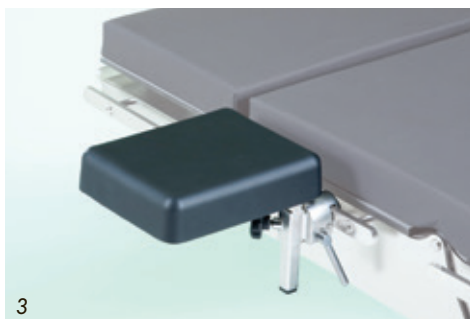
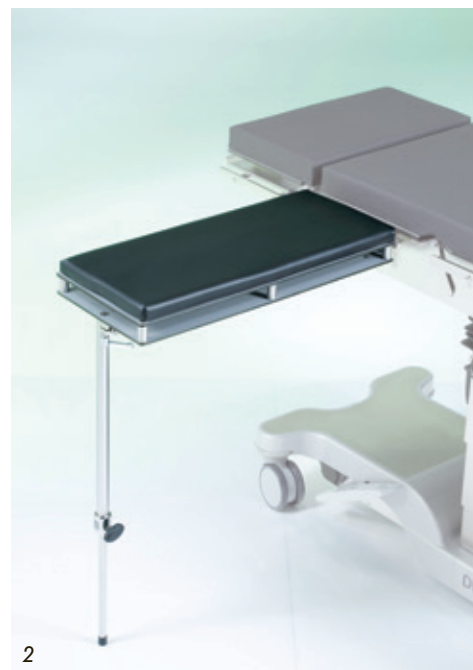
2
Arm/hand operating table 101.0070.1
 for mobilis operating tables, radiolucent plastic board with covered foam pad, antistatic, X-ray cassette slot, 700 x 300 mm (W x D).

3
Upper arm positioning plate 101.0122.0
 radiolucent, height adjustment approx. 100 mm by means of clamp, swivels through 90°, foam pad 210 x 260 mm, (W x D), safe working load: 10 kg. Requires attachment clamp 101.0117.0.

4
Upper arm positioning device 101.0136.0
 for intramedullary nailing of the upper arm, vertical rod and horizontal linear guide with accessory rail, adjustable by means of locking ball-and-socket joint, for attachment of the Weinberger hand traction device 101.0163.0 (to be ordered separately). Requires attachment clamp 101.0146.0.

5
Weinberger hand traction device 101.0163.0
 for intramedullary nailing of the upper arm, vertical rod and horizontal linear guide with accessory rail, adjustable by means of locking ball-and-socket joint, for attachment of the Weinberger hand traction device 101.0163.0 (to be ordered separately).

6
Countertraction post for upper arm 101.0152.0
 padded, radiolucent, safe working load: 12 kg. Requires attachment clamp 101.0146.0.



Carbon Accessories

1 Carbon plate 101.7151.0

– in preparation –
radiolucent CFRP plate, for mounting to the back section of the OR table. 1,200mm long, 1,000mm of which radiolucent. With 60 mm SAF mattress, antistatic, with prop rod.

Safe working load:
with prop rod
DIAMOND OR tables: 225 kg
mobilis OR tables: 225 kg

without prop rod
DIAMOND OR tables: 140 kg
mobilis OR tables: 100 kg

2 Extension for carbon plate 101.7153.0

– in preparation –
radiolucent CFRP extension for attachment to the carbon plate, 300 x 550 mm (l x w), radiolucent area 300 x 510 mm (l x w), 60 mm SAF mattress, antistatic. Side rails 25 x 10 mm over the full length.

3 Side rails for carbon plate 101.7152.0

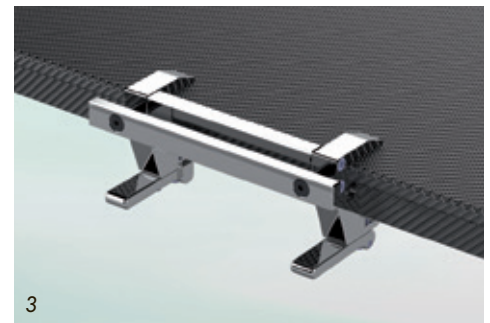
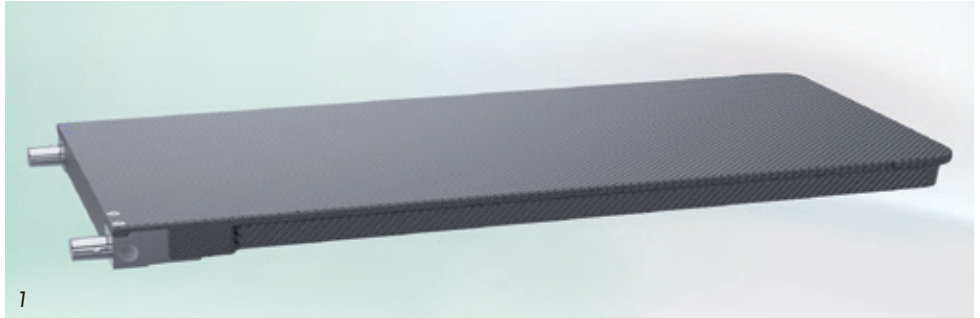
– in preparation –
stainless steel side rails 25 x 10 mm, 220 mm long, for attachment to the carbon plate 101.7151.0.

4 Special arm rest 101.7200.1

with radiolucent CFRP plate, attachment to the side rails. 700 x 250 mm, 600 mm of which radiolucent. Can be loaded up to 25 kg. Swivelling horizontally with interlocking system and handwheel. 25 mm SAF pad, antistatic.

5 Special leg plate 101.7050.1

for mobilis operating tables, 2-section, with radiolucent CFRP plate, for attachment at seat section. Length: 850 mm, of which 730 mm radiolucent, extendable by 250 mm by means of attachable laminate plates. Width: 2 x 250 mm. Can be loaded with up to 30 kg each. Inclination and spreading by means of interlocking system and clamping levers. 60 mm SAF mattress, antistatic.



3

Extension device

The extension device is characterized by its user friendliness and its extended range of applications.

Complex surgical interventions such as hip arthroscopies can be carried out more efficiently thanks to a newly-developed traction unit and useful improvements in the accessories field.

A new special traction boot secures the patient's foot safely under traction in any required position.

A countertraction post with extra padding reliably prevents pressure and nerve damages.

A novel wedge clamping allows an optimized continuous swivelling of the extension bars.



Hip arthroscopy



Hip arthroscopy



Wedge clamping



The extension device in detail



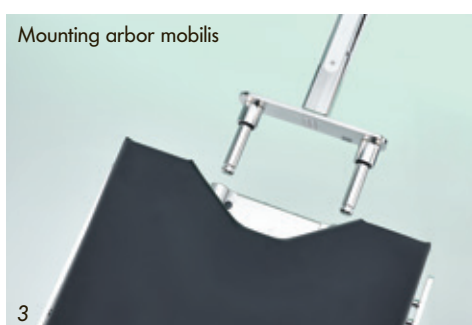
An innovative ball clamping with integrated extension unit assists the operator in the exact adjustment of the surgical site for hip arthroscopy and in the precise repositioning of fractures of the lower extremities.

1 Clear markers at the extension device for a safe operation at all times.

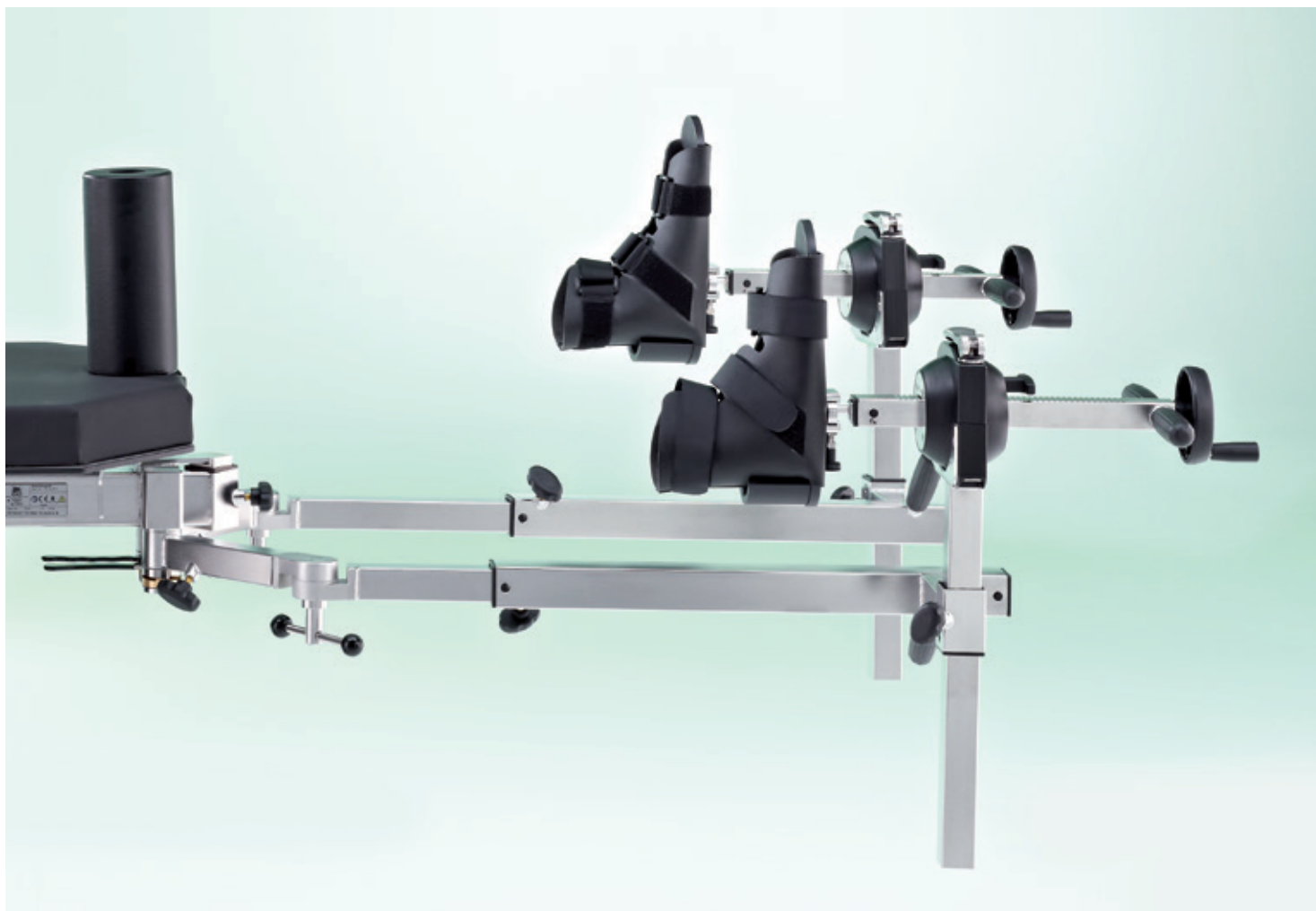
2 Simple fine tuning and intraoperative adjustment as well as monitoring of the required extension forces are possible at all times thanks to the scaling at the traction mechanism.

3 Simple and quick mounting to the operating by means of the mounting arbor.

4



Extension device



Accessories for orthopaedics, traumatology, spinal surgery and extension

For treatment of all kinds of lower limb fractures.

Essential features:

- Fast, simple and secure attaching of the device to the DIAMOND and mobilis operating tables
- modular structure for optimal range of application
- unobstructed access to the lower limbs for X-ray image intensifier and complete transillumination of the two axes
- well-devised accessories for comfortable and precise positioning of the patient
- disinfectant-proof stainless-steel construction

Extension device 101.0270.0

extension bars with form-locking double joints for swivelling and height adjustment. Joint in the bar can either be adjusted horizontally or vertically for optimal X-ray accessibility. Shiftable traction units mounted on the extension bars; tilting, swivelling and rotation joint. All metal parts are made of electropolished stainless steel.

Requires mounting fixture, pad and mounting arbor as described on page 17!

Complete with basic accessories:

- 2 extension bar supports,
 - 2 foot plates for adults,
 - 2 traction boots for adults,
 - 1 countertraction post for dorsal position, adjustable
- total weight: 46 kg



1

Mounting fixture 101.0110.0

for all DIAMOND operating table models, to attach the extension device 101.0270.0 (subsequent fitting possible, however, excluding the "Crash detection" function)

Mounting fixture 101.5250.0

similar to 101.0110.0, but for mobilis operating tables **without longitudinal shift function.** In mobilis table models with longitudinal shift function the mounting fixture is already included. (w/o ill.)

2

Mounting arbor 101.0250.0

for DIAMOND operating tables **with longitudinal shift function.** Required for mounting of extension device 101.0270.0 in combination with mounting fixture 101.0110.0.

Mounting arbor 101.0260.0

similar to 101.0250.0, but for DIAMOND operating tables **without longitudinal shift function.** (w/o ill.)

3

Mounting arbor 101.0251.0

similar to 101.0250.0,

but for mobilis operating tables.



4

Pad 101.0138.0

for positioning plate of extension device.

5

Transport trolley 101.0290.0

Trolley for transportation and storage of the extension device split into separate modules.

6

Transport trolley 101.0221.0

similar to 101.0290.0, but for transportation and storage of the fully mounted extension device.



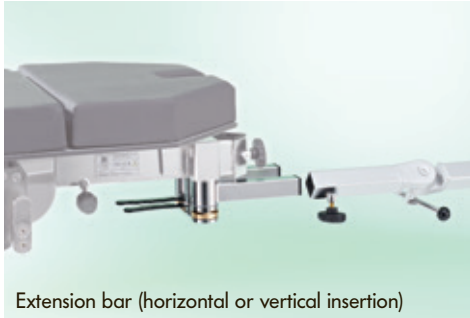
4

5

6

Standard accessories

Further accessories



Extension bar (horizontal or vertical insertion)



1



2

1
Pelvis plaster adapter with pelvis support 101.0340.0

2
Countertraction post for lateral position 101.0350.0

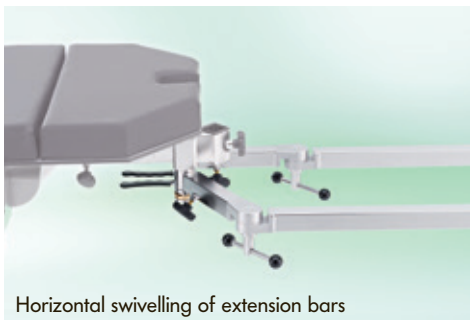
3
Kirschner wire device* 101.0165.0
for extensions using Steinmann pins.

4
Transfer leg plates (pair) 101.0218.0
attachment to seat section with mounting for extension device, for DIAMOND operating tables: also direct attachment to seat section instead of leg sections. Bent stainless steel tube with fabric cover, lightweight construction. For anaesthetization of patients for gynaecological or urological interventions or for interventions using the extension device. Length of leg plates: 875 mm.

5
Traction device for tibial fractures 101.0280.0
countertraction post for lower leg, height adjustable and detachable. Tiltable by means of a gear rim joint.

6
Side rail extension (pair) 101.0193.0
at the seat section, for attachment of a Goepel-type leg support 101.0115.0 using radial setting clamp 101.0146.0.

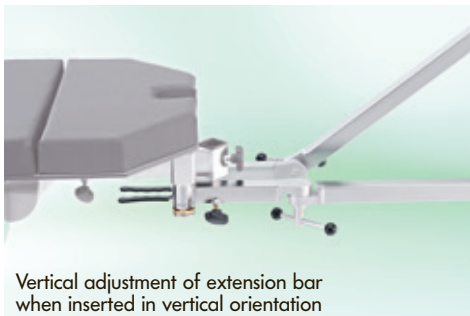
w/o ill.:
2 foot plates for children 101.0201.0
2 traction boots for children 101.0205.0



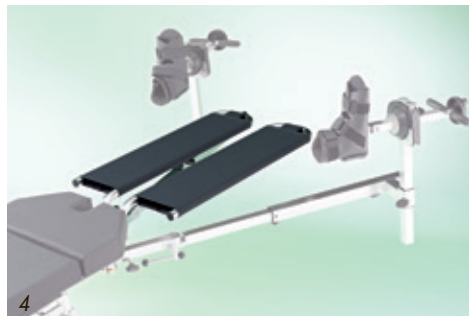
Horizontal swivelling of extension bars



3



Vertical adjustment of extension bar when inserted in vertical orientation



4



Adjustable countertraction post for dorsal position



5

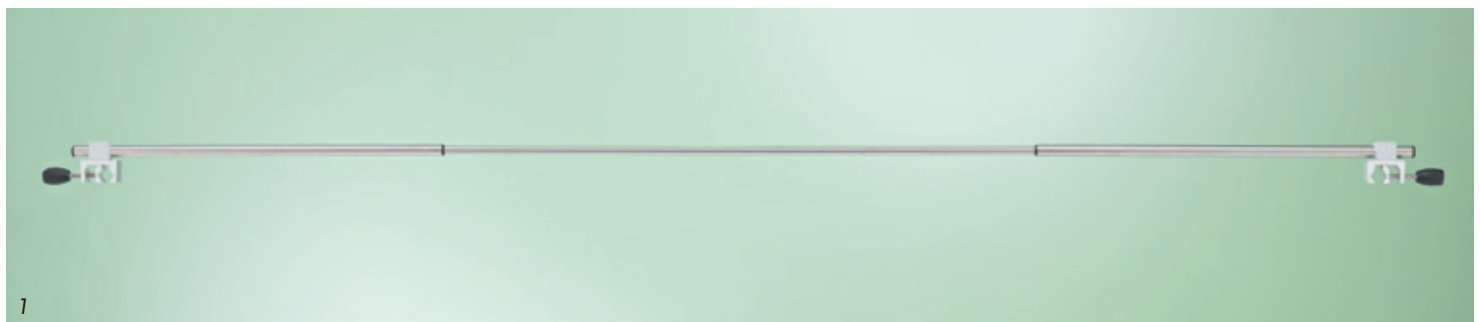


6

Extension device



1 Telescopic rod for suspension of vertical isolation drapes for mounting e.g. to 2 drip-feed stands



1



2

1 **Telescopic rod* 101.0224.0**
for suspension of vertical isolation drapes,
mounted to 2 vertical poles by 2 universal clamps,
telescopic rod adjustable from 1,500 to 2,800 mm.

2 **Pad for hip arthroscopy 101.0320.0**
for use in hip surgery, to slip onto the
countertraction post. Height 240 mm, diam. 230 mm.



3

3 **Special shoe for hip arthroscopy* 101.0310.0**
("Rotex" shoe), permanently positionable shoe for
stabilization of the foot in hip and accident surgery,
anatomically shaped carbon inner shoe, with
quick-lock closures, disposable inner shoe 101.0330.0
not included!



4

4 **Disposable inner shoe (piece)* 101.0330.0**
for use with special shoe for hip arthroscopy
101.0310.0.

Accessories for head positioning and neurosurgery

1

Universal adaptor 101.0141.0

for DIAMOND operating tables, stainless steel, for attachment of universal basic unit 101.0142.0, supporting arm 101.0112.0 and connecting piece 101.0167.0 or 101.0187.0.

Universal adaptor 101.2720.0

similar to 101.0141.0, but for mobilis operating tables. (w/o ill.)

2

Supporting arm 101.0112.0

U-shaped for access of image intensifier, tiltable with braked eccentric lever joint, slide rail 360° rotatable by means of braked adjustment device. For shaped head rest 101.0155.0 or 101.0179.0 and connecting piece 101.0126.0 (requires universal adaptor 101.2720.0 (mobilis) or 101.0141.0 (DIAMOND)).

3

Connecting piece 101.0126.0

height adjustable by means of clamp, slide rail with braked swivel-joint adjustment (requires supporting arm 101.0112.0 and shaped head rest 101.0155.0 or 101.0179.0).

4

Connecting piece 101.0167.0

height adjustable and inclinable side rail adaptor, 240 mm long, suitable for head rest 101.0155.0 or 101.0179.0 (requires universal adaptor 101.2720.0 (mobilis) or 101.0141.0 (DIAMOND)).

5

Connecting piece 101.0187.0

with central square mounting, three-joint adjustment by means of star handles, with side rail adaptor, 275 mm long, suitable for head rest 101.0155.0 or 101.0179.0 (requires universal adaptor 101.2720.0 (mobilis) or 101.0141.0 (DIAMOND)).

6

Shaped head rest 101.0155.0

1-section, PU head rest with detachable pad and restraint strap, optimal pressure distribution in prone and supine position. (requires connecting piece 101.0167.0 or 101.0187.0 and universal adaptor 101.2720.0 (mobilis) or 101.0141.0 (DIAMOND)).

7

Shaped head rest 101.0179.0

2-section rest, adjustable in width, PU head rest with detachable pad and restraint strap, optimal pressure distribution in prone and supine position. (requires connecting piece 101.0167.0 or 101.0187.0 and universal adaptor 101.2720.0 (mobilis) or 101.0141.0 (DIAMOND)).

8

Surgeon's arm rest 101.0195.0

hand support for ophthalmic microsurgery. Height adjustable and reversible. For attachment to connecting piece 101.0167.0 or 101.0187.0.

9

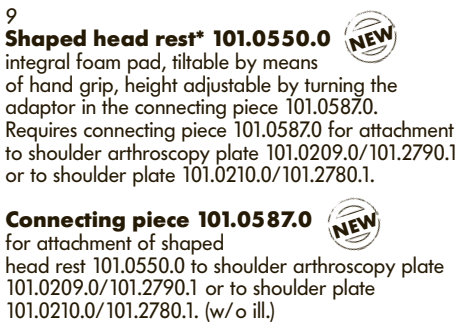
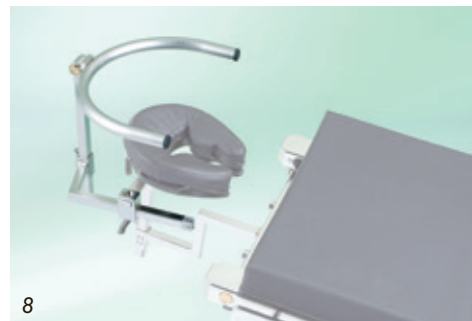
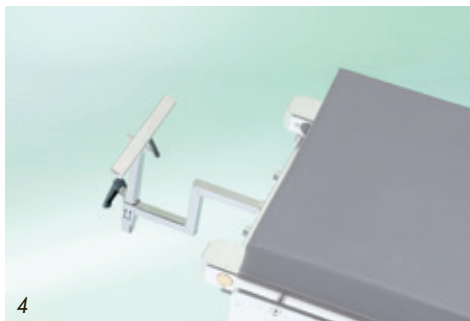
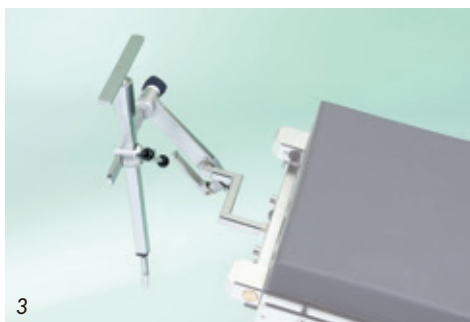
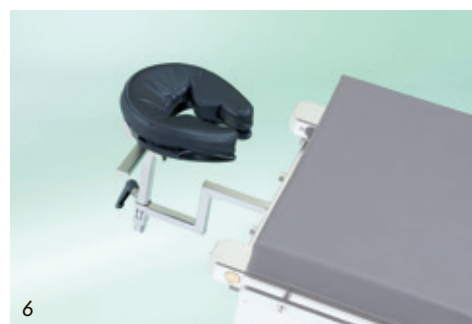
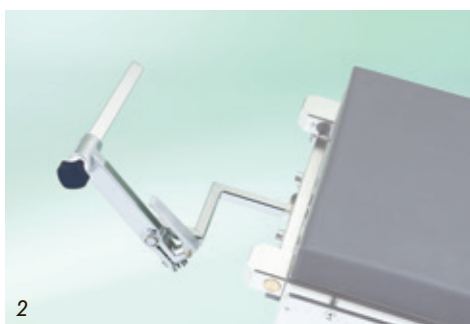
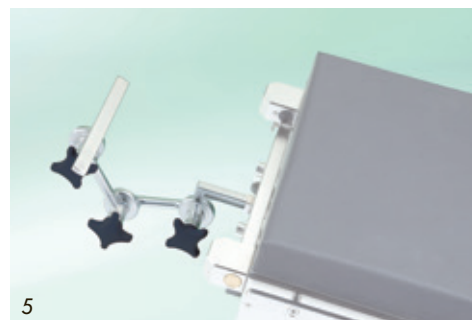
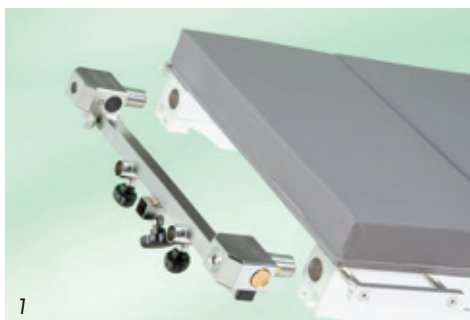
Shaped head rest* 101.0550.0

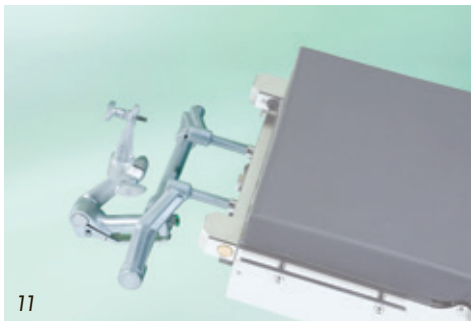
integral foam pad, tiltable by means of hand grip, height adjustable by turning the adaptor in the connecting piece 101.0587.0. Requires connecting piece 101.0587.0 for attachment to shoulder arthroscopy plate 101.0209.0/101.2790.1 or to shoulder plate 101.0210.0/101.2780.1.

10

Connecting piece 101.0587.0

for attachment of shaped head rest 101.0550.0 to shoulder arthroscopy plate 101.0209.0/101.2790.1 or to shoulder plate 101.0210.0/101.2780.1. (w/o ill.)





10
Cross-bar attachment 101.0014.0
 stainless steel, for seated patient positioning in neurosurgery, adjustment for different table widths. Requires 2 clamps 101.0018.0!

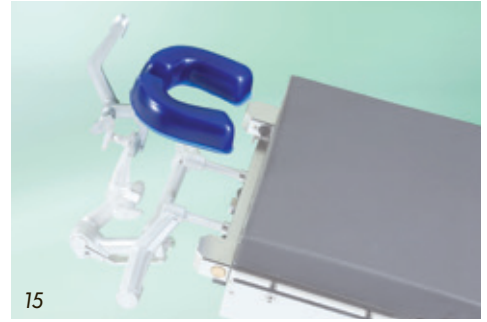
11
Doro Universal basic unit* 101.0142.0
 with double-joint adjustment, attachment to adaptor 101.2720.0 (mobilis) or 101.0141.0 (DIAMOND) or crossbar attachment 101.0014.0. Upon request, also available in radiolucent material.



12
Doro Skull Clamp adaptor* 101.0113.0
 to attach skull clamp 101.0270.0 or shaped head rest 101.0156.0 to universal basic unit 101.0142.0. Upon request, also available in radiolucent material.

13
Doro Skull Clamp adaptor with ball-and-socket joint* 101.0168.0
 provides 360° rotation, horizontal inclination up to 90°, to attach Skull Clamp 101.0270.0 or Shaped head rest 101.0156.0 to Connecting piece 101.0142.0. Upon request, also available in radiolucent material.

14
Doro Skull Clamp* 101.0127.0
 for a secure and stable 3-point fixation of patient's head in supine, prone, lateral or sitting position. With 3 pins for adults. Upon request, also available in radiolucent material.



15
Doro Shaped head rest* 101.0156.0
 double-adjustment, U-shaped gel pads, requires Skull clamp adaptor 101.0113.0 and basic unit 101.0142.0.


16
Doro Skull Pins* 101.0180.0
 3 pcs. reusable skull pins, paediatric.

17
Doro Skull Pins* 101.0188.0
 3 pcs. reusable skull pins, adult.

Accessories for Gynaecology and Urology



1 Leg support (pair)* 101.0016.0
height adjustable and swivelling from the foot end, servo-assisted, plastic support with gel pad for foot and lower leg, adjustable to all directions. Special attachment clamps already included.

2 Göpel-type leg support Cysto-Lift (pair)* 101.0217.0 
height adjustment and adduction/abduction from foot end, servo-assisted, padded Göpel-type lower leg supports, adjustable in any position, incl. attachment clamps.



3 Leg support (Goepel type) 101.0115.0
black integral foam pad, antistatic, with fastening strap, w/o clamp. Stainless steel 18/10, rod of 520 mm length. Requires attachment clamp ref. 101.0018.0 or 101.0146.0.

4 Urological adaptor 101.0197.0
for DIAMOND operating tables, to extend the seat section by approx. 420 mm, with cut-out for urological interventions, fully radiolucent, with stainless steel side rails 25 x 10 mm. Upon request, also available for tables w/o gyn. cutout.

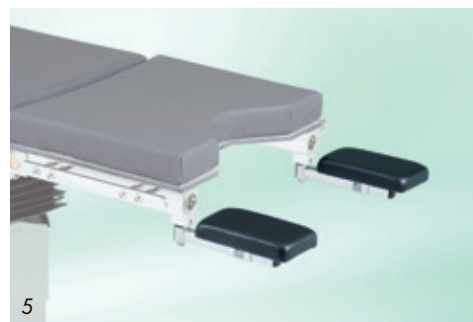
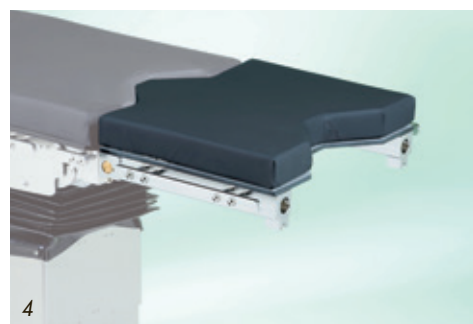
Double table top 101.0520.0
for X-ray cassette insertion, for urological adaptor 101.0197.0. (w/o ill.)

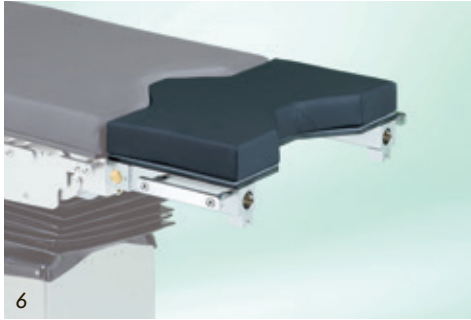
Urological adaptor 101.6010.1
similar to 101.0197.0, but for mobilis operating tables. (w/o ill.)



5 Elbow rests (pair) 101.0129.0
with stainless steel supports for attachment to uro. adaptor for DIAMOND 101.0197.0, covered foam pads, antistatic, 120 x 200 mm (L x W).

Elbow rests (pair) 101.6020.0
similar to 101.0129.0, but attachment to uro. adaptor for mobilis 101.6010.1. (w/o ill.)





6



11



7



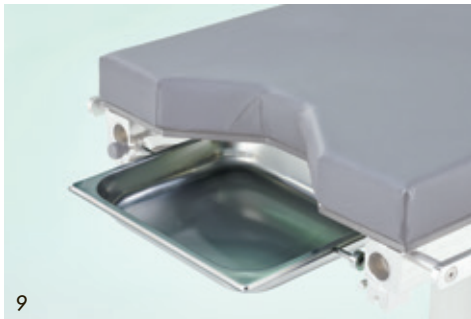
12



8



13



9



14



10

6
Gynaecological adaptor 101.0204.0
 for DIAMOND operating tables, to extend the seat section by 285 mm, for gynaecological and urological surgery, fully radiolucent, with side rails and cut-out for gynaecology. Upon request, also available for tables w/o gyn. cutout.


Double table top 101.0530.0
 for X-ray cassette insertion, for gynaecological adaptor 101.0204.0. (w/o ill.)


Gynaecological adaptor 101.4010.1
 similar to 101.0204.0, but for mobilis operating tables. (w/o ill.)


7
Rinsing basin with holder 101.0170.0
 for DIAMOND operating tables, stainless steel, attachment to table column, with outlet and plastic hose, dimensions of basin: 350 x 325 x 60 mm (W x D x H).


8
Swivel-mounted rinsing basin with holder 101.0182.0
 for DIAMOND operating tables, stainless steel, attachment to table column, with outlet and plastic hose, dimensions of basin: 350 x 325 x 60 mm (W x D x H).

TUR sieve 101.0191.0
 stainless steel, for basin 101.0182.0. (w/o ill.)

9
Instrument disposal 101.0585.0 
 for mounting to gyn. adaptor 101.0204.0 or uro. adaptor 101.0197.0, stainless steel, can be pulled and swivelled, quick removal for easy cleaning, w/o outlet. Dimensions of basin: 300 x 230 x 40 mm (W x D x H).

10
Leg plate* 101.0570.0 
– in preparation –
 for DIAMOND operating tables, four sections, for easy and anatomic patient positioning, continuous adjustment, easier access to the surgical field by removable plates for upper and lower legs, removable pads. Göpel-type leg supports 101.0571.0 can be attached instead of the leg plates.

11
Leg supports (pair)* 101.0571.0 
– in preparation –
 Göpel-type leg supports for attachment to leg plates 101.0570.0.

12
Basin with gyro flushing 101.0584.0 
 for attachment to gyn. adaptor 101.0204.0 or uro. adaptor 101.0197.0, large and round stainless steel basin Ø 360 mm, extensible, swivel-type, lockable in any position. Without profiled rim for maximum hygiene. Odour sealing by siphon trap at site (wall/floor system). Manual water inlet manually by means of water tap. Highly flexible outlet hose and connecting piece, Ø 40 mm. According to DIN EN 1717.

TUR sieve 101.0588.0
 round, stainless steel, for basin with gyro flushing 101.0584.0. (w/o ill.)

13
Rinsing basin with attachment 101.2400.0
 for mobilis operating tables, comfortable attachment on the base of the table. Quick locking for basin on the attachment device, safe screw attachment on the base, basin capacity 7 litres.

14
Rinsing basin with holder 101.2470.0
 for mobilis operating tables, stainless steel, attachment to table column, with outlet and plastic hose, dimensions of basin: 350 x 325 x 60 mm (W x D x H).

Positioning Aids

1
Gel pad for lateral positioning* 101.0189.0
 for safe lateral positioning, to relieve pressure on the shoulder joint and protect the nerve tracts, for surgical interventions on the hip, on the shoulder or on the kidney, 720 x 500 x 160 mm (W x D x H).

2
Gel heel pads (pair)* 101.0196.0
 to support the Achilles area and relieve pressure on the patients heels during lengthy surgical procedures, 190 x 100 x 70 mm (W x D x H).

3
Tunnel cushion* 101.0203.0
 for lateral patient positioning, prevents the risk of positioning damage to the patient's legs, antistatic covered pad with special foam core of 70 mm thickness, 650 x 400 x 220 mm (W x D x H).

4
Double wedge pad* 101.0208.0
 for supine patient positioning, designed to prevent brachial plexus paralysis and to stabilize the head, 440 x 500 x 100 mm (W x D x H).

5
Cushion 101.0211.0
 antistatic covered foam pad, semicircular, 240 x 120 x 475 mm (W x H x L).

6
Gel head ring* 101.0143.0
 open, adult size, provides stability and protection to the patient's face during surgery in lateral position, Ø 200 x 54 mm.

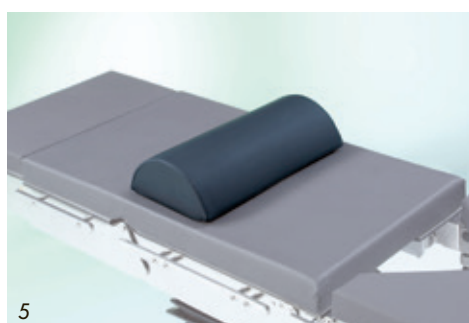
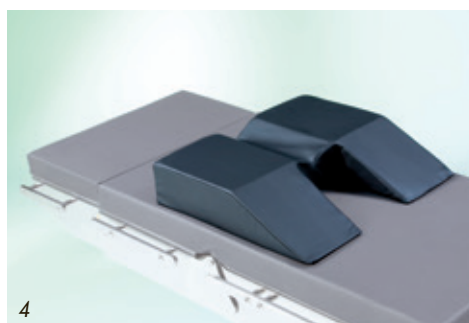
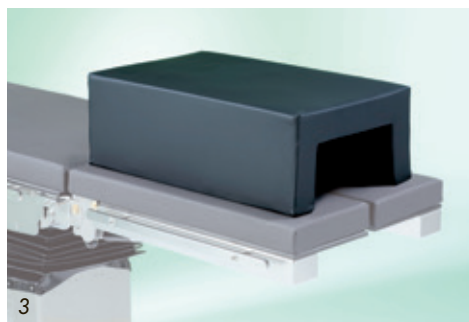
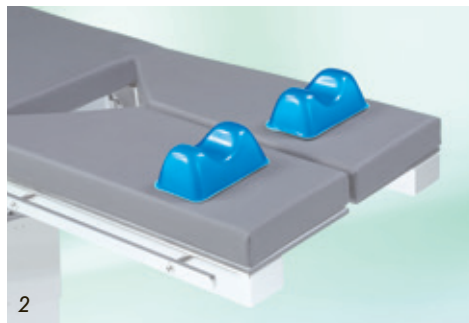
7
Gel head ring* 101.0157.0
 open, paediatric, provides stability and protection to the patient's face during surgery in lateral position, Ø 140 x 34 mm.

8
Gel head ring* 101.0169.0
 closed, adult size, protects the head and ears during surgery in supine position, Ø 200 x 50 mm.

9
Gel head ring* 101.0181.0
 closed, paediatric, protects the head and ears during surgery in supine position, Ø 140 x 34 mm.

10
Gel head rest for prone positioning* 101.0114.0
 adult size, anatomically designed so that the patient's head can comfortably rest face down, outlets for ET tubes on both sides, 280 x 240 x 150 mm (W x D x H).

11
Gel head rest for prone positioning* 101.0128.0
 paediatric, anatomically designed so that the patient's head can comfortably rest face down, outlets for ET tubes on both sides, 260 x 230 x 140 mm (W x D x H).





1

Vacuum mattress, short* 101.0581.0

for patient positioning in supine, gynaecological or Trendelenburg position. A fixation of the vacuum mattress on the OR table prevents the patient from sliding off the table in extreme head-down tilt (e.g. in laparoscopic sigma resection). Preventing loss of patient body heat thanks to thermo-visco system, preventing nerve damage by thermo-visco inserts. The required vacuum can be created using e.g. the suction devices present inside the OR theatre. 1.200 mm x 1.000 mm (W x D)

Scope of supply:

OR vacuum mattress, short. Add'l cushion for anaesthetisation and padded fastening strap.

2

Vacuum mattress, long* 101.0582.0

for patient positioning in lateral position. A fixation of the vacuum mattress on the OR table prevents the patient from sliding off the table in extreme head-down tilt. Preventing loss of patient body heat thanks to thermo-visco system, preventing nerve damage by thermo-visco inserts. The required vacuum can be created using e.g. the suction devices present inside the OR theatre. 2.000 mm x 920 mm (W x D)

Scope of supply:

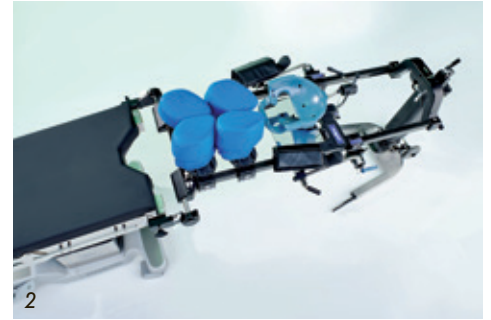
OR vacuum mattress, long. Add'l cushion for anaesthetisation and padded fastening strap.



Special accessories



1



2



2



2

1
RotexTable* 101.0560.0
 Positioning device for hip endoprosthesis and arthroscopy. Electric height adjustment of the patient's leg by foot control, manual fine adjustment by rotating, extending, adducting and abducting, for use with extension device 101.0270.0, Safe working load: 220 kg

2
Allen® Spine System* 101.0160.0
 Positioning device for positioning patients for surgical interventions on the spine, attachment at the side rails of the operating table.

8 Scope of supply:
 RotexTable, RotexShoe (with 2 inner shoes), foot control, charging unit with wall mount, replaceable battery, connecting cable, fulcrum, hand crank, adaptor for extension device 101.0270.0



Schmitz u. Söhne GmbH & Co. KG

P. O. Box 14 61
58734 Wickede (Ruhr)
Germany (postal address)
Zum Ostenfeld 29
58739 Wickede (Ruhr)
Germany (visiting address)
Phone +49 (0)2377 84 0
Fax +49 (0)2377 84 135
www.schmitz-soehne.com
export@schmitz-soehne.de

Technical service, hotline:
Phone +49 (0)2377 84 549
Fax +49 (0)2377 84 210
service@schmitz-soehne.de

All articles including corresponding accessories marked with the CE label meet the standards for medical devices acc. to MPG and the EC regulation 93/42/EEC.



The products may only be used for their intended purpose of use. Please also observe our operating manual!



f /schmitz.soehne



Schmitz abroad: Switzerland

SCHMITZ AG
Schloss-Strasse 67
8207 Schaffhausen
Phone +41 (0) 52 6 43 25 05
Fax +41 (0) 52 6 43 26 91
schmitz-ag@bluewin.ch

SCHMITZ AG
François Poncet
Bahnhofplatz 2
3284 Fräschels
Phone +41 (0) 31 755 65 88
Fax +41 (0) 31 755 65 89
info@schmitz-suisse.ch

France

SCHMITZ FRANCE SAS
27, rue du Lieutenant
Colonel Prévost
69006 Lyon
Phone +33 (0) 3 83 22 94 67
Fax +33 (0) 3 83 22 87 66
info@schmitz-france.fr

Spain

SCHMITZ u. Söhne Ibérica S.L.
Centro de Negocios Tartessos
Edificio Artemisa
C/ Pollensa, nº 2 - Oficina 3
28290 Las Rozas (Madrid)
Phone +34 (0) 91 6 40 45 14
Fax +34 (0) 91 6 36 63 05
schmitz@schmitz.es

Italy

SCHMITZ ITALIA S.r.l.
Daniela Capeletti
Piazza Garibaldi 20
15076 Ovada (AL)
Phone +39 (01 43) 8 03 50
Fax +39 (01 43) 83 42 53
Mobile 349-6338723
info@schmitz-italia.it
www.schmitz-italia.it

Russia and Eastern Europe

Schmitz u. Söhne GmbH & Co. KG
Sergey Kosolapov
Bornaische Str. 180
04279 Leipzig
Germany
Phone +49 (0) 3 41 3 37 80 34
Fax +49 (0) 3 41 3 37 80 35
Mobile +49 (0) 1 52 0 90 77 05 8
kosolapov@schmitz-soehne.de

Middle East

Schmitz u. Söhne GmbH & Co. KG
Mohammad Abu Khurma
Phone +966 (0)504230849
Fax +49 (0)2377 84 135
m.khurma@schmitz-soehne.de

China

Schmitz (Guangzhou)
Trading Co. Ltd.
World Trade Centre
North Tower 2501
Huan Shi East Road 371-375
Guangzhou 510095
Phone +86 (0) 20 87 61 33 01
Fax +86 (0) 20 87 60 39 23
info@schmitz-soehne.cn

Latin America

Schmitz u. Söhne GmbH & Co. KG
Alfredo Gentile
Av. Córdoba 1513 Piso 8, Oficina A
Buenos Aires, Argentina
Phone +54 (0)11 4811 4642
Fax +54 (0)11 4811 4642
Mobile 0911 6887 2086
gentile@schmitz-soehne.de

The complete Schmitz-products range

OPX mobilis®
Operating Tables
for Outpatient Departments
and Operating Theatres
Unique Flexibility
and Reliability



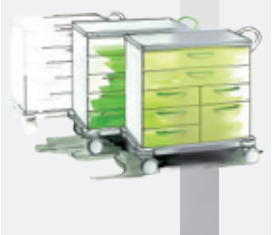
DIAMOND
A class of its own



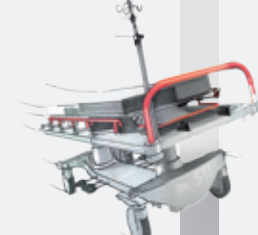
Gynaecology, Urology
and Proctology
The perfect equipment
to meet all requirements



varimed®
The functional trolleys –
our experts for everyday
clinical practice



STL 285, STS 282, STX 280
The Patient Transport
Systems for Emergencies,
Outpatient Depts.,
Intensive Care and X-Ray



varimed®
Furniture for OR theatres
and outpatient departments



varimed®
Medical Furniture
for Examination and
Treatment Areas



Partura®
The Schmitz delivery table
comfortable and
safe delivery – with focus
on preventive obstetrics

