



PROFESSIONAL
LED LIGHT SYSTEM

Examination Light
Luvis-E100

Distributed by:



PO Box 530, Camden NSW 2570

Ph: 1300 651 958

Email: enquiries@nesgroup.com.au

www.nesgroup.com.au

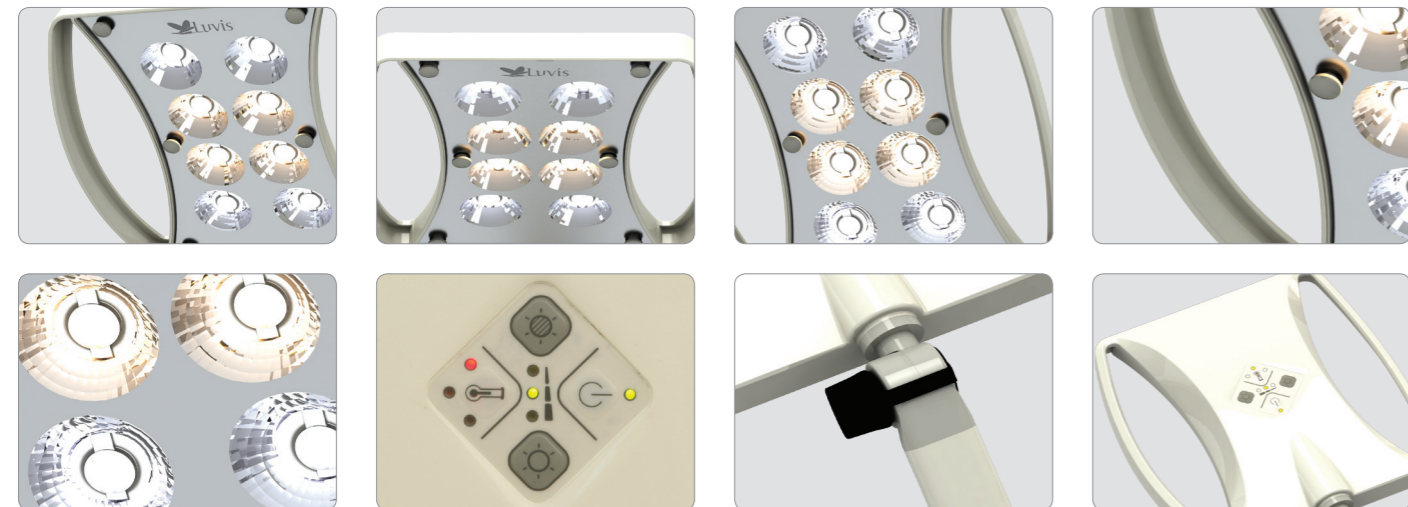


Luvis-E100

EXAMINATION LED Light for Various Medical Field

Simple, Clear and Affordable

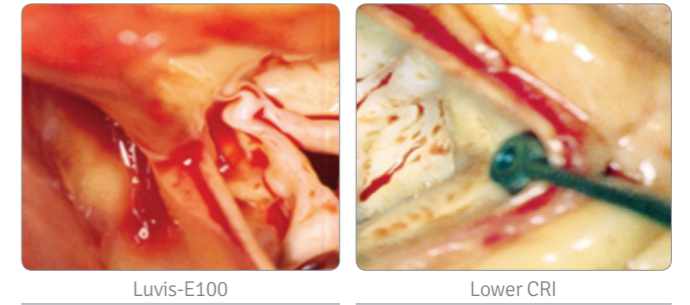
Luvis Examination LED Light, E-100, delivers clear light, cool LED lighting with an slim design for all of your exam and minor procedure needs.



- ❑ High level of illumination intensity : 60,000 lux at 0.5 m
- ❑ 17cm focal size
- ❑ 3 Steps of Intensity control
- ❑ Accurate color rendering Ra > 95
- ❑ 3 steps of Color temperatures control (3500 K, 4000K, 4500 K)
- ❑ Easy to use , simple control unit on the head
- ❑ Low maintenance cost
- ❑ Lowest heat emission and no UV from the light

Clear and Natural - Highest color rendering for a variety examination

95Ra of Highest Color rendition index with adjustable color temperature offer clear and natural color rendering. E100 will help to distinguish the small nuance of color and may help to prevent unexpected mistake from distorted color delivery.



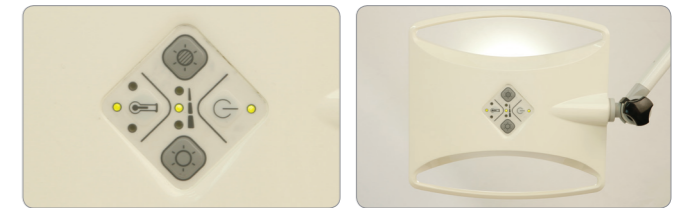
Wider user - Adjustable intensity and Color temperature.

Through intuitive control panel user easily can adjust the intensity and color temperature in 3steps. Adjustable E100 can be adopted in various scene of medical field



Easy to install and Use

Simplified way of installation and intuitive control panel offers easy to use



Safe - Cool Light No emission of UV

Lowest level of heat emission will not prompt drying up of wounds while the treatment or experiment Also no UV emission which accelerating of skin aging.

Eco-Lower power consumption

Less than 20W of power consumption and 5years of LED life will save the cost and hassled job of maintenance

Technical Data	
Illumination Ec at 0.5m working distance	60,000 Lux
Color Rendering Index	Ra 95
	R9 90
Color Temperature	3,500K/4,000K/4,500
Illumination Field Size	17cm
Dimming Range	50% ~ 100%
Radiant Energy	3.2 mW/m2lx
Irradiance	192 W/m2
Head Size	25cm x 24.6cm
Power consumption	<20 W

