

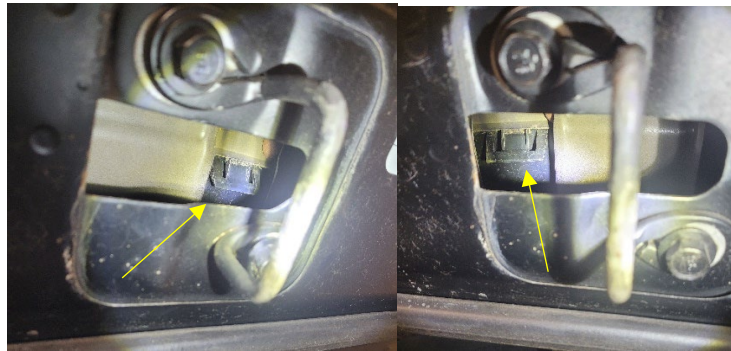
# CHALLENGER HELLCAT HOOD BEZELS

PROFESIONAL INSTALLATION RECOMMENDED

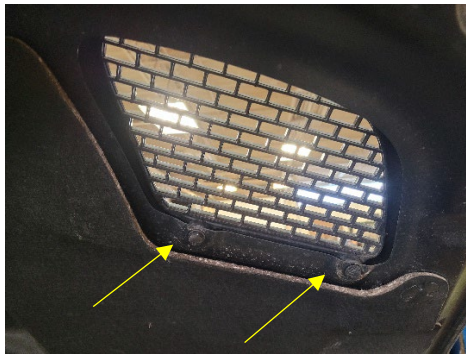
## TOOLS REQUIRED

- FLASHLIGHT
- FLAT HEADED SCREWDRIVER
- 10MM WRENCH

1. OPEN HOOD
2. USE FLASHLIGHT TO LOCATE RETAINING CLIPS FOR CENTER BEZEL
3. USE FLATHEADED SCREWDRIVER TO RELEASE BEZEL



4. CAREFULLY PULL CENTER BEZEL OUT OF THE FRONT OF THE HOOD
5. SLIDE NEW BEZEL INTO PLACE AND CAREFULLY SNAP DOWN INTO THE HOOD
6. REMOVE 2 10MM BOLTS ON EACH SIDE BEZEL TO RELEASE IT FROM THE HOOD



7. PULL BEZEL OUT AND REPLACE WITHN NEW
8. CLOSE HOOD AND ENJOY YOUR NEW AND IMPROVED LOOK