

# **DODGE CHARGER UPPER GRILLE INTAKE BEZEL 2019+**

**PROFESSIONAL INSTALLATION RECOMMENDED**

## TOOLS NEEDED

- JACK
- JACK STANDS
- 10MM WRENCH
- TRIM REMOVAL TOOL
- T15 TORX
- 7MM WRENCH
- FLAT HEAD SCREWDRIVER
- 22MM SOCKET WITH BREAKER BAR
  - OR FACTORY TIRE IRON

1. SLIDE JACK UNDER SAFE LIFTING LOCATION UNDER CAR AND RAISE THE FRONT OF THE VEHICLE
2. ONCE RAISED PLACE JACKSTANDS IN A SAFE PLACE ONE ON EACH SIDE OF THE CAR AND LOWER THE CAR ONTO THE STANDS
3. OPEN YOUR HOOD
4. LOCATE AND REMOVE 12 PLASTIC PUSH CLIPS AND HOOD LATCH COVER



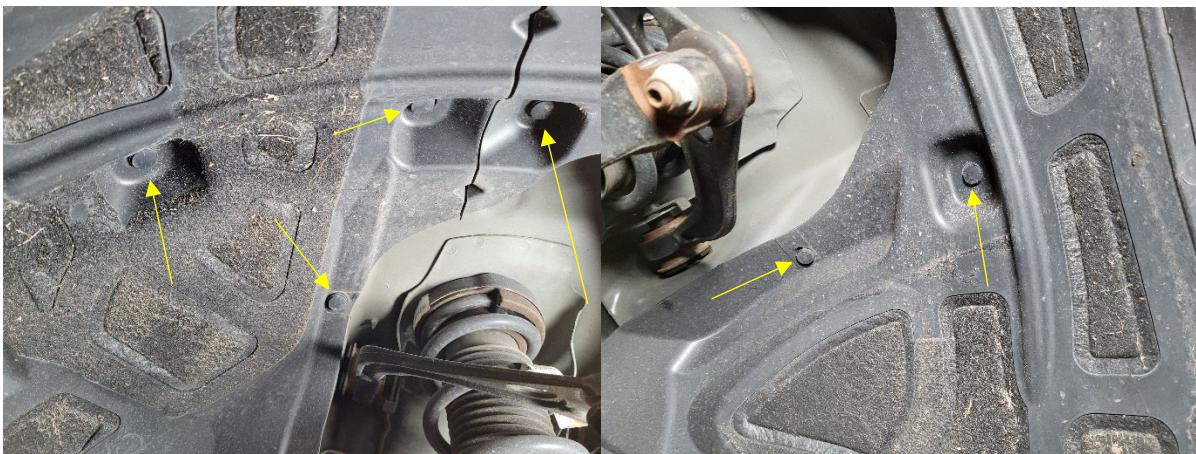
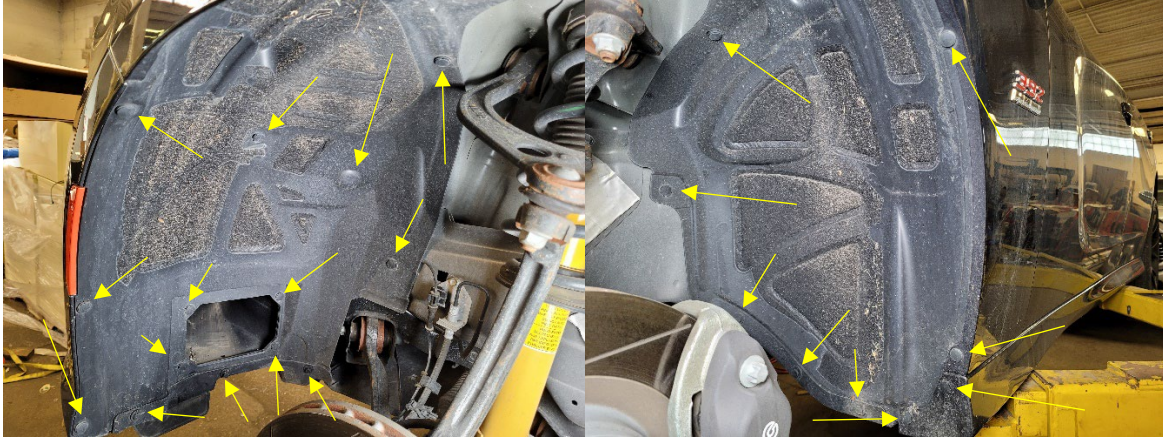
5. LOCATE AND REMOVE 2 10MM BOLTS HOLDING BUMPER TO FENDER





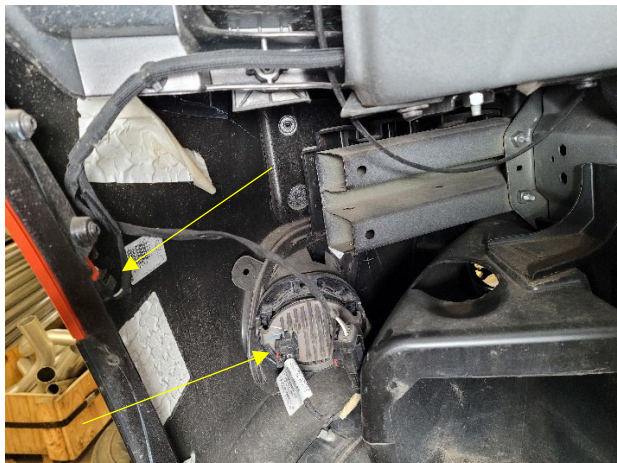
6. REMOVE BOTH FRONT WHEELS

7. USE TRIM REMOVAL TOOL TO REMOVE 26 PUSH CLIPS FROM EACH INNER FENDER LINER



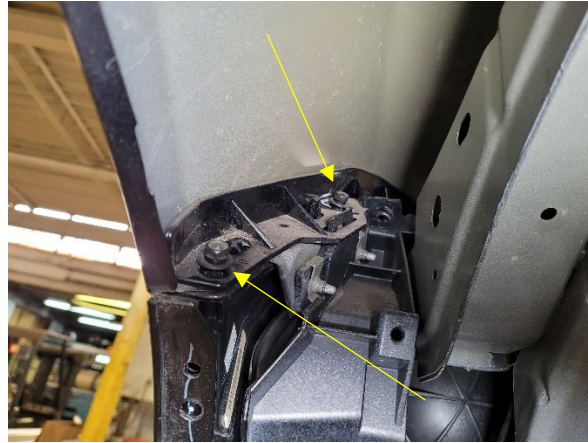
8. CAREFULLY REMOVE INNER FENDER LINER

9. UNPLUG FOG LIGHTS AND MARKER LIGHTS





10. REMOVE 2 10MM BOLTS ON EACH SIDE HOLDING BUMPER TO FENDER

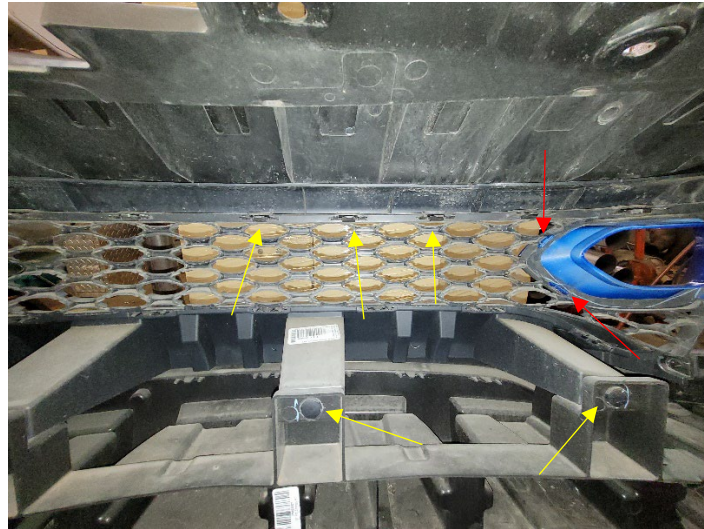


11. SLIDE UNDER THE FRONT OF THE CAR, LOCATE AND REMOVE 4 10MM BOLTS AND 3 OR 5 PLASTIC PUSH CLIPS



12. CAREFULLY SLIDE BUMPER ASSEMBLY OFF OF THE CAR

NOTE) IF REPLACING UPPER GRILL, REMOVE 4 PUSH CLIPS THEN DEPRESS RETAINING TABS AND PULL GRILL OUT THE REARWARD SIDE OF BUMPER AND REPLACE WITH NEW GRILL



13. CAREFULLY PUSH BEZEL RETAINING CLIPS THROUGH THE GRILL  
(see above picture, red arrows)

14. INSERT NEW BEZELS INTO GRILL

15. SLIDE BUMPER BACK ONTO CAR

16. REINSTALL THE 2 10MM BOLTS AND 12 PUSH CLIPS AND HOOD LATCH COVER

17. REINSTALL 2 10MM BOLTS ON EACH SIDE

18. PLUG FOG LIGHTS AND MARKER LIGHTS BACK IN

IF REPLACING LOWER GRILL

A. SLIDE UNDER FRONT OF CAR AND REMOVE 8 7MM BOLTS





B. REMOVE PLASTIC COVER

C. FROM THE FRONT OF THE BUMPER REMOVE THE 6 T15 TORX SCREWS AT THE TOP OF THE LOWER GRILL SECTION

D. FROM UNDER THE CAR REMOVE 6 T15 TORX SCREWS



E. SLIDE OLD GRILL OUT THE FRONT OF THE BUMPER

F. REPLACE WITH NEW GRILL AND REINSTALL HARDWARE

G. REPLACE PLASTIC COVER AND HARDWARE

19. REINSTALL INNER FENDER LINERS AND PUSH CLIPS

20. REINSTALL WHEELS

21. RAISE CAR BACK UP AND REMOVE JACKSTANDS

22. LOWER CAR BACK TO GROUND

23. ENJOY NEW AND IMPROVED LOOK