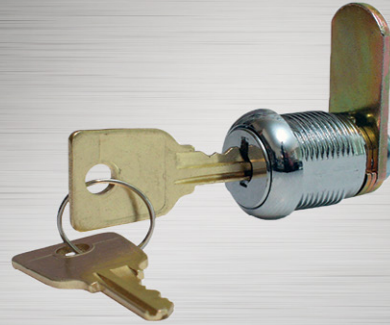


9



SECTION NINE

[9-1 CAM LOCK PART NUMBER SYSTEM](#)

[9-2 GENERAL INFORMATION](#)

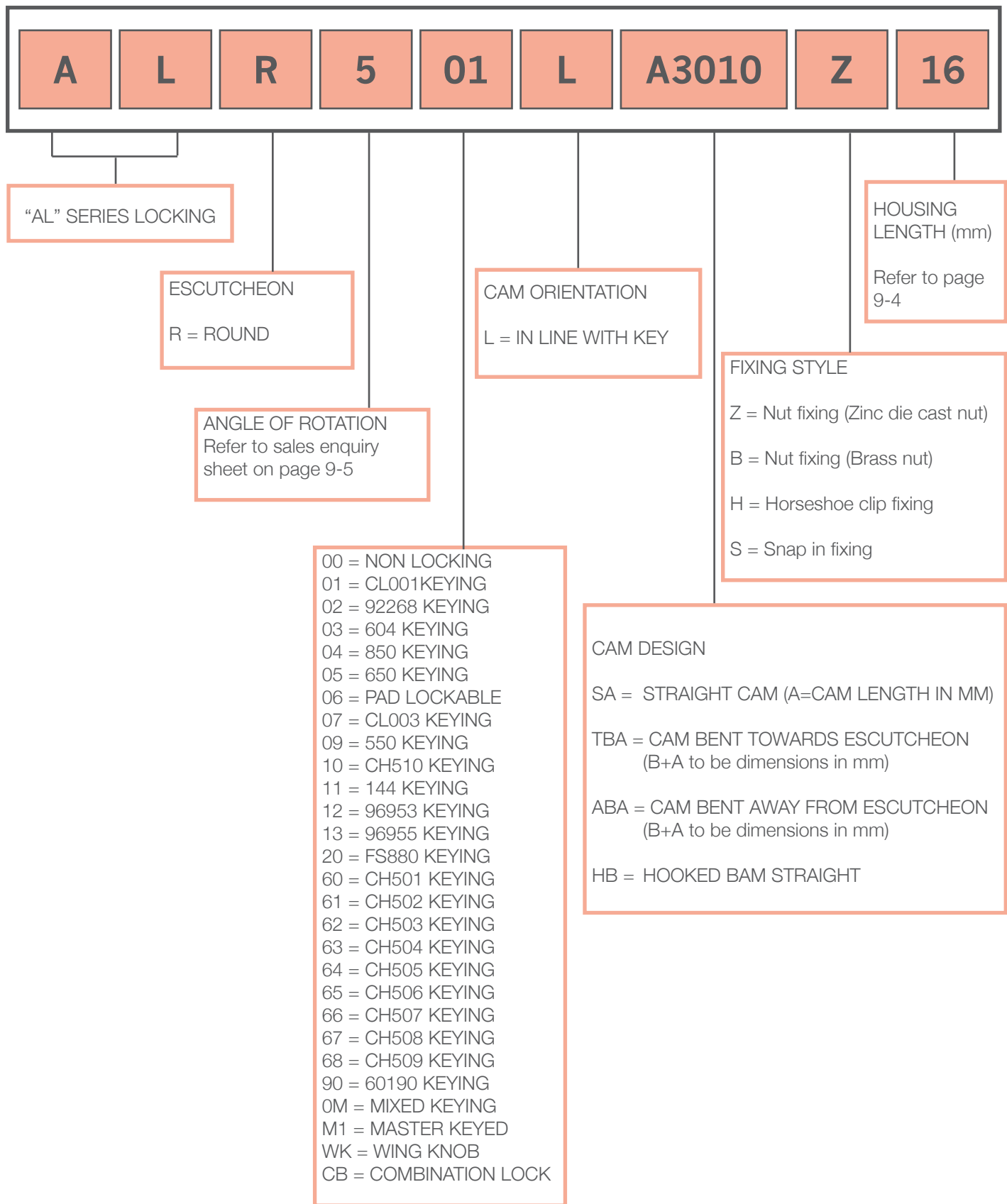
[9-2 ESCUTCHEONS & INSERTS](#)

[9-3 SALES ENQUIRY FORM](#)

[9-6 STANDARD CONDFIGURATIONS](#)

[9-7 FINGER HANDLE PULL](#)

PART NUMBER SYSTEM



ESCUTCHEONS & INSERTS

CAM LOCK SOLUTIONS

With the **SELECTLOK®** range of cam locks, the possibilities are endless. Mix and match housing lengths, fixing varieties, cams and keys to create the ideal solution for your application. Just complete the sales enquiry form on the following pages and we'll be pleased to attend to your request. But if the choice is too great, just choose one of our standard configurations on page 9-6. We're sure there is one to suit.

FEATURES

- Round or square escutcheons
- Various cam and housing styles and lengths
- Fully assembled
- Multiple drive and key options available

ESCUTCHEONS AND INSERTS

Round escutcheon



Square escutcheon



Wing knob



Combination



SALES ENQUIRY FORM

Please complete the following when ordering and email to sales@selectlok.com.au to ensure you receive exactly what you require:

1. KEY COMBINATION

Options:

(a) Specific key code:

Key number:

(b) Mixed key combinations:

(c) Master keyed:

How many systems?

(d) Combination lock

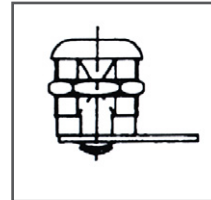
(e) Non locking

(Wing Knob)

2. FIXING STYLE

(a) Nut fixing

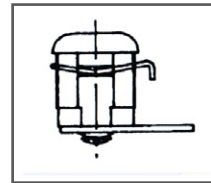
Zinc diecast nut



Brass nut

(b) Horseshoe clip fixing (Max. 25mm thick)

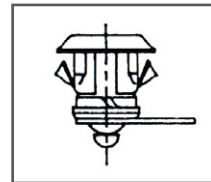
Panel thickness:mm



(c) Snap in fixing

(Panels 0.6 to 3mm thick)

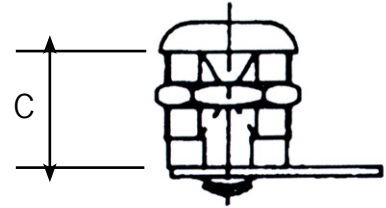
Panel thickness: mm



SALES ENQUIRY FORM

3. HOUSING LENGTH

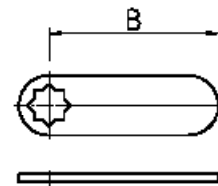
C =



4. CAM DESIGN

(a) Straight cam

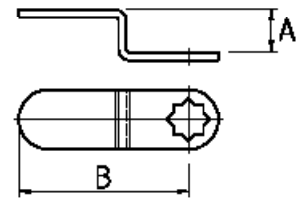
B =mm



(b) Cam bent towards escutcheon

B =mm

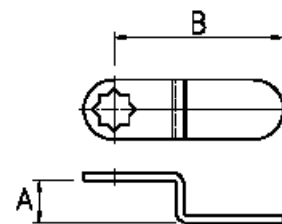
A =mm



(c) Cam bent away from escutcheon

B =mm

A =mm



*PLEASE NOTE:
Hooked cams are available

SALES ENQUIRY FORM

5. ESCUTCHEON DESIGN

(a) Round 22mm



(b) Square 25.4mm



6. CAM ORIENTATION

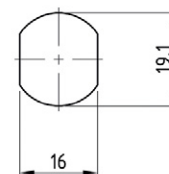


(a) In line with key



(b) 90 degrees opposed to key

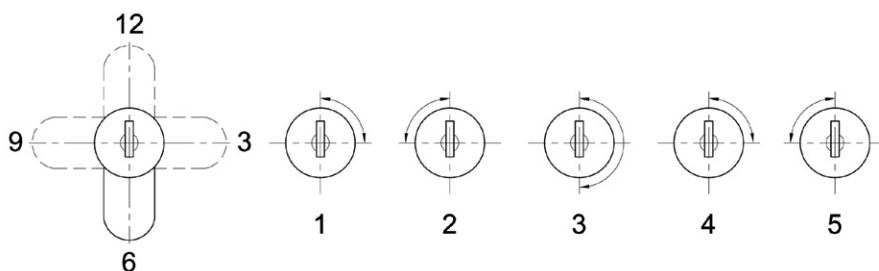
CUT-OUT



7. ANGLE OF ROTATION

Camlocks are available in five different movements, identified by the following suffix.

- | | | |
|---|---|---|
| 1 | 90° clockwise movement of key from locked position. Key held in unlocked position. | 1 |
| 2 | 90° anticlockwise movement of key from locked position. Key held in unlocked position. | 2 |
| 3 | 180° movement of key one way, either clockwise or anticlockwise, as required, key being free in both positions. | 3 |
| 4 | 90° clockwise movement of key from locked position. Key free in both positions. | 4 |
| 5 | 90° anticlockwise movement of key from locked position. Key free in both positions. | 5 |



*Please Note:

Cam lock must be held with housing flats vertical and key serrations facing up

STANDARD DESIGN

PART NUMBER	KEY CODE	HOUSING LENGTH	ESCUTCHEON DESIGN	ROTATION	CAM ORIENTATION	CAM DESIGN	FIXING DESIGN
ALR411LS28Z19B	144	19mm	ROUND, BLACK	90 DEGREE	KEY IN LINE WITH CAM	STRAIGHT 28mm	ZINC NUT
ALR509LS30Z16	550	16mm	ROUND	90 DEGREE	KEY IN LINE WITH CAM	STRAIGHT 30mm	ZINC NUT
ALR303LS30Z16	604	16mm	ROUND	180 DEGREE	KEY IN LINE WITH CAM	STRAIGHT 30mm	ZINC NUT
ALR402LS30Z19	92268	19mm	ROUND	90 DEGREE	KEY IN LINE WITH CAM	STRAIGHT 30mm	ZINC NUT
ALR402LS30Z30	92268	30mm	ROUND	90 DEGREE	KEY IN LINE WITH CAM	STRAIGHT 30mm	ZINC NUT
ALR3020S30B16	92268	16mm	ROUND	180 DEGREE	KEY 90 DEGREE OPPOSED TO CAM	STRAIGHT 30mm	BRASS NUT
ALR302LA3206B22	92268	22mm	ROUND	180 DEGREE	KEY IN LINE WITH CAM	BENT AWAY FROM FACE	BRASS NUT
ALR501OH30Z20	CL001	16mm	ROUND	90 DEGREE	KEY 90 DEGREE OPPOSITE TO CAM	HOOKED	ZINC NUT
ALR501LS30Z16	CL001	16mm	ROUND	90 DEGREE	KEY IN LINE WITH CAM	STRAIGHT 30mm	ZINC NUT
ALR401OH30Z20	CL001	20mm	ROUND	90 DEGREE	KEY 90 DEGREE OPPOSITE TO CAM	HOOKED	ZINC NUT
ALS301LA4511Z16	CL001	16mm	SQUARE	180 DEGREE	KEY IN LINE WITH CAM	BENT AWAY FROM FACE	ZINC NUT
ALR307LS30Z16	CL003	16mm	ROUND	180 DEGREE	KEY IN LINE WITH CAM	STRAIGHT 30mm	ZINC NUT
ALS4M1LT3506Z16	MASTER KEYED	16mm	SQUARE	90 DEGREE	KEY IN LINE WITH CAM	BENT TOWARDS FACE	ZINC NUT
ALR2M1LA3012B16	MASTER KEYED	16mm	ROUND	90 DEGREE	KEY IN LINE WITH CAM	BENT AWAY FROM FACE	BRASS NUT
ALR5WKOS30Z16	WING KNOB	16mm	ROUND	90 DEGREE	KEY 90 DEGREE OPPOSED TO CAM	STRAIGHT 30mm	ZINC NUT

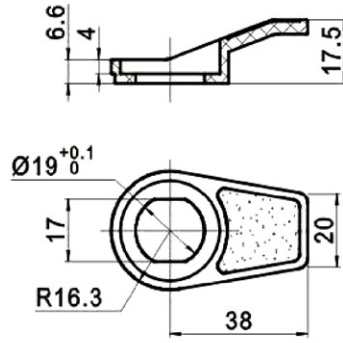
FINGER HANDLE PULL

FEATURES:

- Black PP handle pull

MATERIAL & FINISH:

See table



MATERIAL	PART NUMBER
Plastic	60026

DESCRIPTION	PART NUMBER
Slam lock	MS826