

4



## SECTION FOUR

- [4-1 BRASS D-PULL HANDLES](#)
- [4-2 MILD STEEL D-PULL HANDLES](#)
- [4-3 STAINLESS STEEL D-PULL HANDLES](#)
- [4-4 STUD FIX D-PULL HANDLES](#)
- [4-5 POLYAMIDE D-PULL HANDLES](#)
- [4-6 POLYAMIDE D-PULL HANDLES](#)

# BRASS D-PULL HANDLE

## FEATURES:

- Suitable for outdoor applications
- High quality chrome plating
- Available in various centre distances

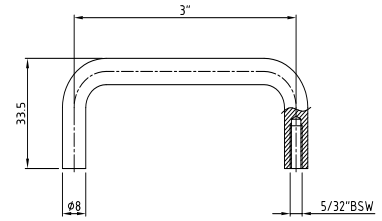
## DIMENSIONS:

Shaft Diameter = 8mm

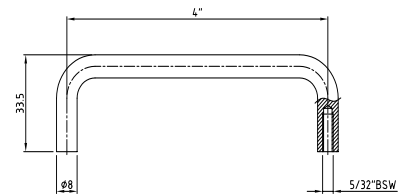
## MATERIAL & FINISH:

Material Brass

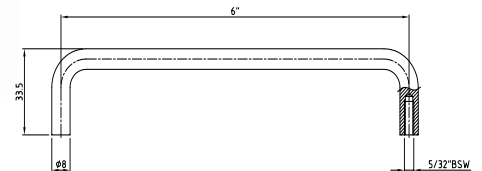
Finish Chrome plated



VERSION 1



VERSION 2

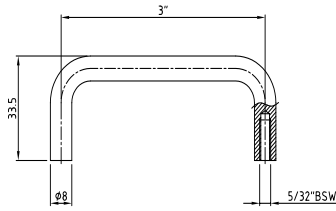


VERSION 3

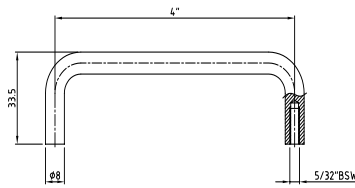


VERSION	CENTRE DISTANCE	PART NUMBER
1	76mm	MT203-3
2	102mm	MT206-4
3	152mm	MT206-6

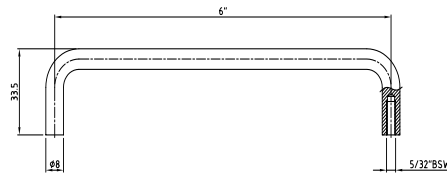
# MILD STEEL D-PULL HANDLE



VERSION 1



VERSION 2



VERSION 3

## FEATURES:

- Affordable alternative to brass
- High quality chrome plating
- Available in various centre distances

## DIMENSIONS:

Shaft Diameter = 8mm

## MATERIAL & FINISH:

Material Mild steel  
Finish Chrome plated



VERSION	CENTRE DISTANCE	PART NUMBER
1	76mm	MT203-3M
2	102mm	MT206-4M
3	152mm	MT206-6M

# STAINLESS STEEL D-PULL HANDLE

## FEATURES:

- Suitable for outdoor applications
- Available in various centre distances

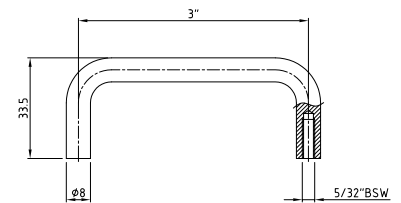
## DIMENSIONS:

Shaft Diameter = 8mm

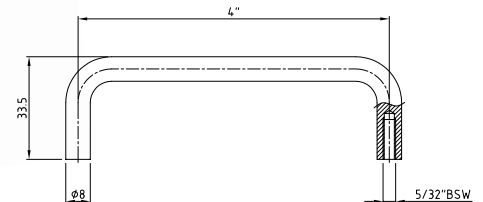
## MATERIAL & FINISH:

Material Stainless steel (304 grade)

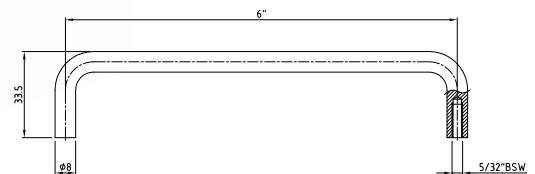
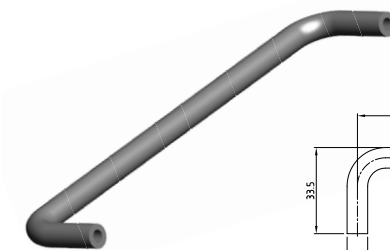
Finish Polished



VERSION 1



VERSION 2

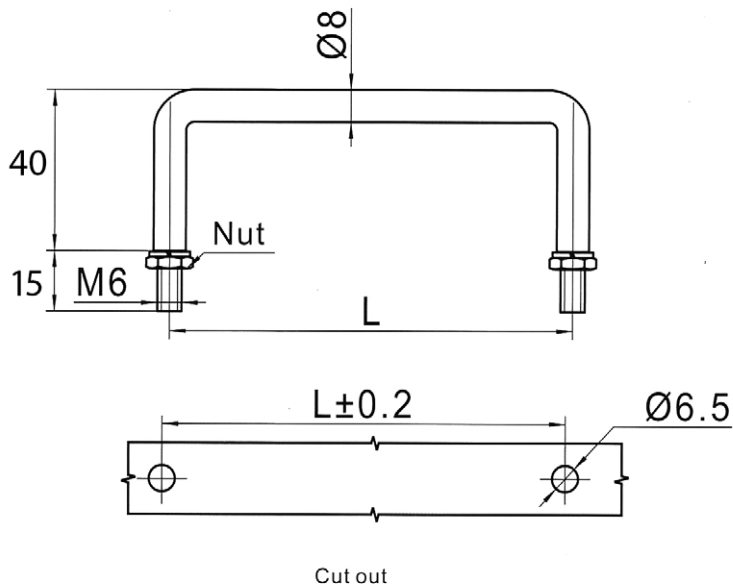


VERSION 3



VERSION	CENTRE DISTANCE	PART NUMBER
1	76mm	MT203-3S
2	102mm	MT206-4S
3	152mm	MT206-6S

# STUD FIX D-PULL HANDLE



## FEATURES:

- Stud fixing with M6 nut
- High quality chrome plating
- Available in various centre distances

## DIMENSIONS:

Shaft Diameter = 8mm

## MATERIAL & FINISH:

Material & Finish (refer to the table)

CENTRE DISTANCE	MATERIAL & FINISH	PART NUMBER
75mm	Mild steel, Chrome plated	LS507-75
100mm	Mild steel, Chrome plated	LS507-100
150mm	Mild steel, Chrome plated	LS507-150
75mm	304 Stainless steel, polished	LS507-S75
100mm	304 Stainless steel, polished	LS507-S100
150mm	304 Stainless steel, polished	LS507-S150



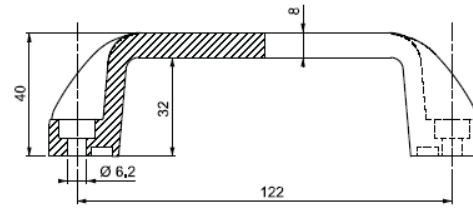
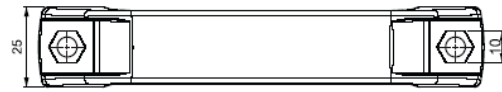
# POLYAMIDE D-PULL HANDLE

## FEATURES:

- Suitable for outdoor applications
- High quality material
- Mounting for M6 hex bolts

## MATERIAL & FINISH:

Material Polyamide



COLOUR

Black

PART NUMBER

M086-1

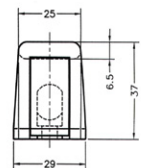
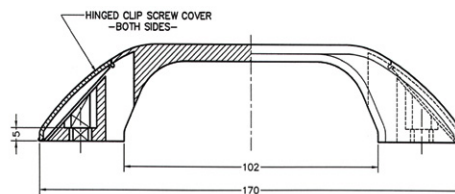
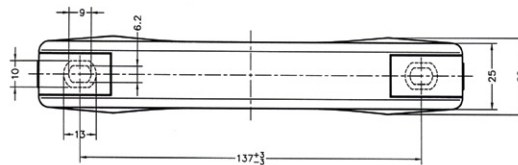
# POLYAMIDE D-PULL HANDLE

## FEATURES:

- Suitable for outdoor applications
- High quality material
- Mounting for M6 hex bolts

## MATERIAL & FINISH:

Material Polyamide



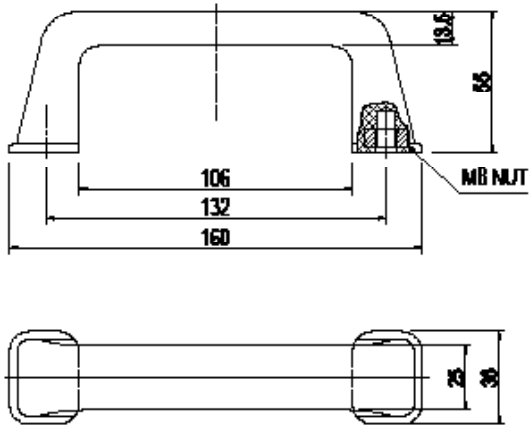
COLOUR

Black

PART NUMBER

DHPA20

# HEAVY DUTY D-PULL HANDLE



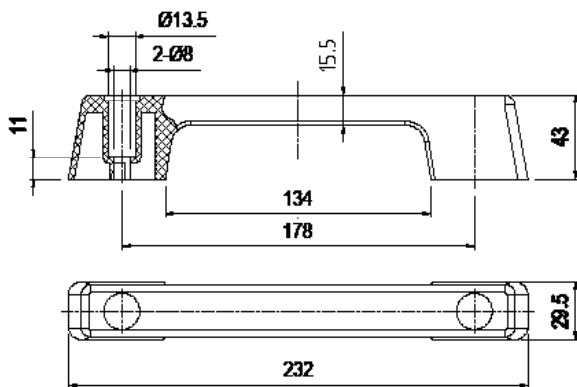
## MATERIAL & FINISH:

- Black polypropylene



COLOUR	PART NUMBER
Black	LS505

# POLYAMIDE D-PULL HANDLE



## MATERIAL & FINISH:

Material Polyamide



COLOUR	PART NUMBER
Black	LS521