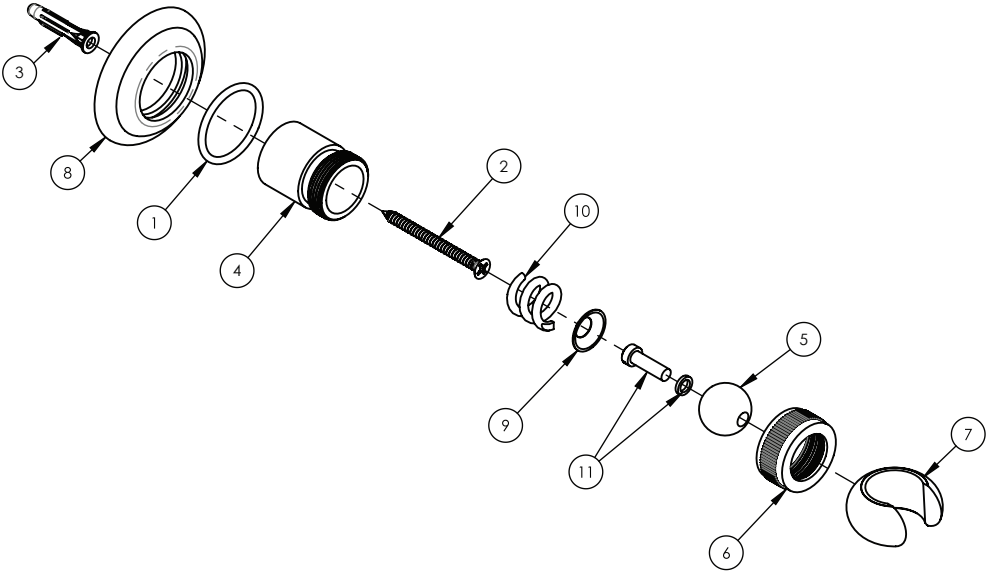


GENERAL CHARACTERISTICS

WE RECOMMEND THAT ALL PLUMBING PRODUCTS BE INSTALLED BY A LICENSED PROFESSIONAL
IMPORTANT: Thoroughly read instructions before installation.

▪ K6001 PARTS BREAKDOWN & INSTALL SET-UP

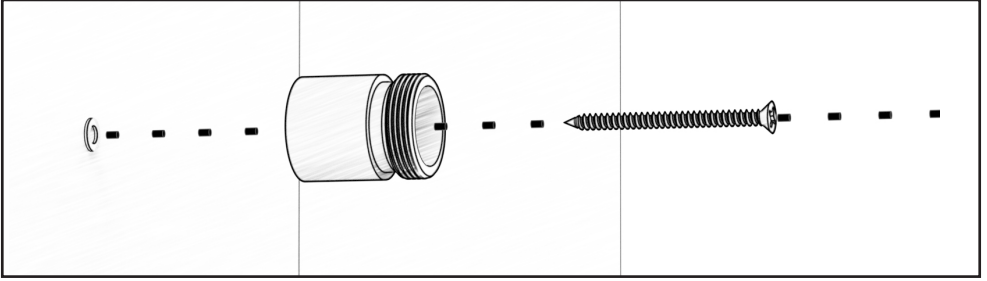
FOR K6002 PARTS BREAKDOWN & INSTALL - PAGE 4
 FOR K6008 PARTS BREAKDOWN & INSTALL - PAGE 6



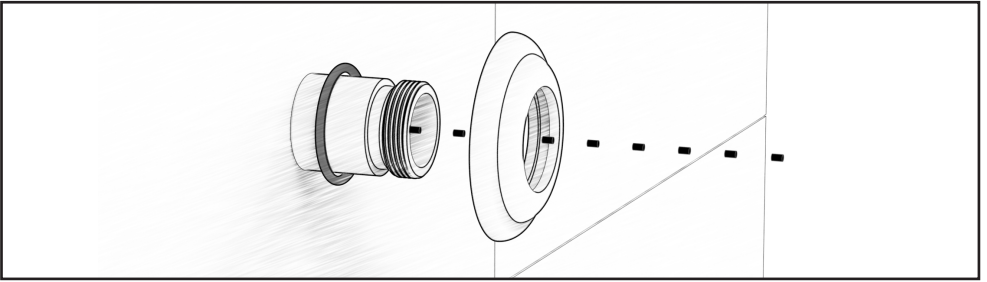
ITEM NO.	PART NUMBER	DESCRIPTION	QTY.	
1	90121	O-RING, 1-1/16"ID X 3/32"THK, AS-568-121	1	
2	92234	SCREW FOR WOOD, PHIL, NO. 8 X 1-1/2"L	1	
3	92235	ANCHOR FOR DRYWALL, TWIST-ACTION NO. 6-8 SIZE	1	
4	P18005/00	K6001 BODY	1	
5	P18007	K6001, K6002 BALL JOINT	1	
6	P18008/00	COLLAR NUT, K6001 K6002	1	
7	P18009	K6001, K6002, HOOK ONLY	1	
8	P18012/00	K6008,K6002,K6001 FLANGE	1	
9	P18015	SLIDE BAR COUNTERSUNK WASHER	1	
10	P18016	SLIDE BAR SPRING	1	
11	P36010	10/32 X 1/2" SLOT FILLM/S BRASS FOR K6001 & K6002	1	

K6001 INSTALL SET-UP

Determine the location of the wall bracket. Drill a pilot hole for **dry wall screw anchor**. Install anchor into finished wall. Install wall bracket body using dry wall screw.



Slide **flange** and **o-ring** onto the bracket body.



Insert **spring** and **washer** into bracket body then followed by the **hook assembly**. **NOTE: the hook is tapered to accept the cone fitting of hand shower hose. If the hose will not slide into the hook, rotate the hook assembly 180°**

