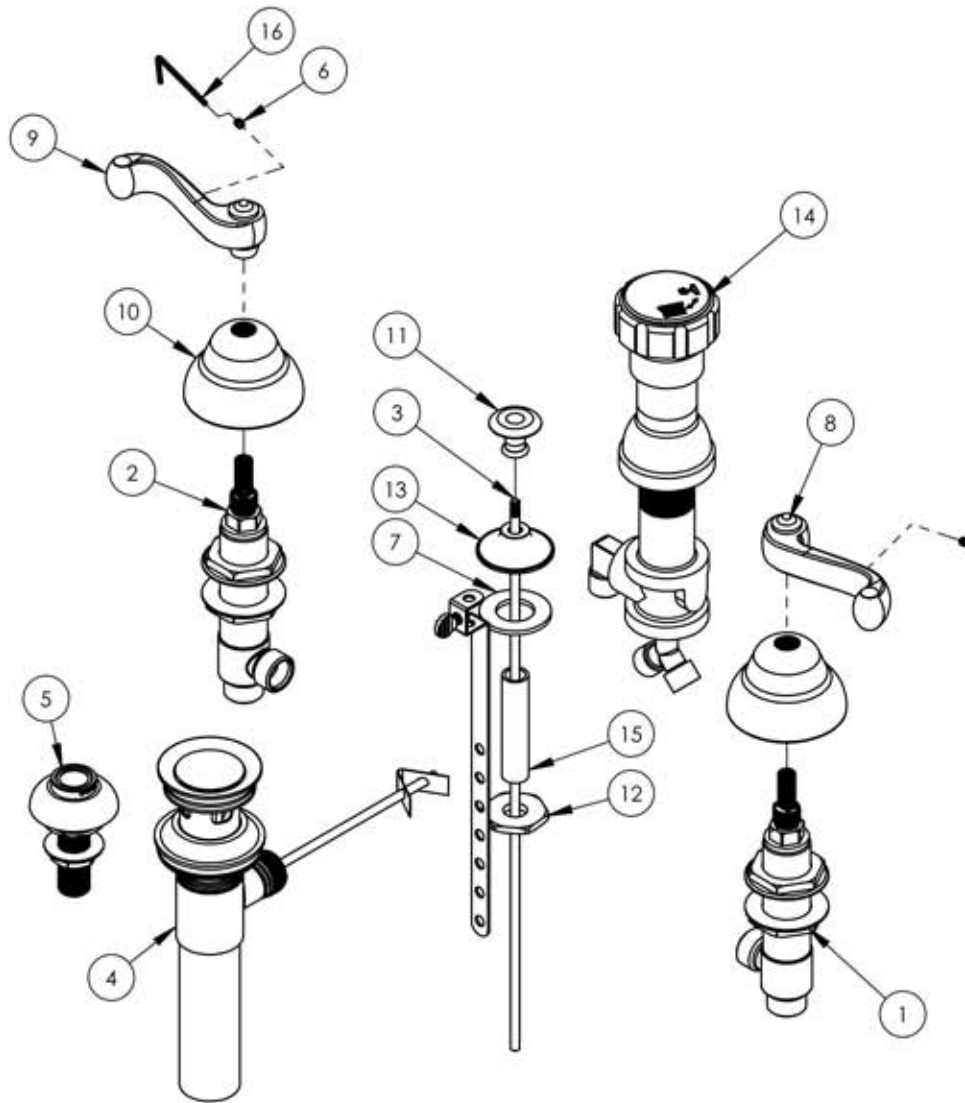


A

B

C

D



ITEM NO.	PART NUMBER	DESCRIPTION	QTY.
1	1-109	WIDESPREAD VALVE COLD LAV 16PT	1
	10716	VALVE BODY, WIDESPREAD LAV	1
	10248	INTERNAL SEAT FOR WIDESPREAD	1
	90013	O-RING, 7/16"ID X 9/16"OD X 1/16"THK, AS-568-013	1
	10235	CARTRIDGE, VALVE 1/2"G W/ 16PT COLD LEAD FREE	1
	92037-BL	NUT, FLANGED 1"-20 THREAD	2
2	1-110	WIDESPREAD VALVE HOT LAV 16PT	1
	10716	VALVE BODY, WIDESPREAD LAV	1
	10248	INTERNAL SEAT FOR WIDESPREAD	1
	90013	O-RING, 7/16"ID X 9/16"OD X 1/16"THK, AS-568-013	1
	10236	CARTRIDGE, VALVE 1/2"G W/ 16PT HOT LEAD FREE	1
	92037-RD	NUT, FLANGED 1"-20 THREAD	2
3	10719/00	POP-UP ROD, 10-24, 14" LONG	1
4	3-046/00	POP-UP DRAIN ASSEMBLY (2-101, 2-102)	1
	10790	BODY, POP-UP DRAIN	1
	92089	MOUNTING NUT, DRAIN ASSY.	1
	92090	NYLON WASHER	1
	90505	CONICAL GASKET, RUBBER	1
	90506	RIM GASKET DRAIN	1
	10791	DRAIN RIM	1
	10796	STOPPER ROD	1
	10795	GUIDE, POP-UP DRAIN	1
	10792	STOPPER DRAIN	1
	90507	GASKET, STOPPER DRAIN (O-RING)	1
	90508	GASKET, BALL ROD	1
	10794	BALL ROD	1
	92088	NUT, BALL ROD	1

E

ZONE	REV.	DESCRIPTION	DATE	APPROVED
------	------	-------------	------	----------

REVISIONS

1261 LOGAN AVENUE  
COSTA MESA, CALIFORNIA 92626  
PHONE: 714.361.4800  
FAX: 714.617.3120

# PHYLORICH®

Defining Luxury Since 1959

PROPRIETARY AND CONFIDENTIAL

THE INFORMATION CONTAINED IN THIS DRAWING IS THE SOLE PROPERTY OF RSS MANUFACTURING. ANY REPRODUCTION IN PART OR AS A WHOLE WITHOUT THE WRITTEN PERMISSION OF RSS MANUFACTURING IS PROHIBITED.

-	-	INTERPRET GEOMETRIC DIMENSIONING & TOLERANCING IN ACCORDANCE WITH ASME Y14.5-2009 & ASME Y14.41-2003 STANDARDS, UNLESS OTHERWISE SPECIFIED. DIMENSIONS ARE IN INCHES. TOLERANCES ARE:
NEXT ASSY	USED ON	FRACTIONS ±1/64" DECIMALS X.X: ±.1 X.XX: ±.01 X.XXX: ±.005 ANGULAR ±.5°
APPLICATION		
MATERIAL		
FINISH	DRAWN	NAME CA DATE 10/16/2013
DO NOT SCALE DRAWING	CHECKED	

FOUR HOLE BIDET SET, REVERE & SAVANNAH SERIES, CURVED HANDLE  
(100-61/00)

SIZE ASM/PRT NO. REV  
**A** D4102/00

SCALE: 1:4 WEIGHT: lbs. SHEET 1 OF 2

5

4

3

2

1