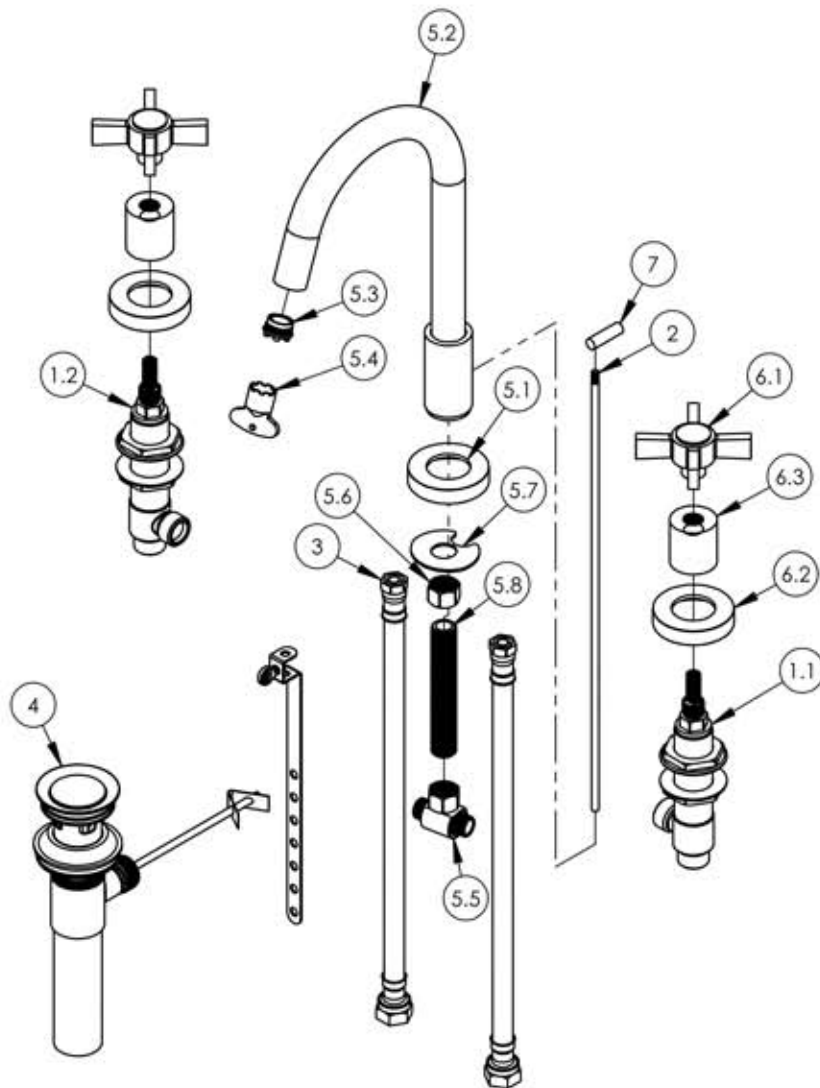


A

B

C

D



ITEM NO.	PART NUMBER	DESCRIPTION	QTY.
1	1-600	WIDESPREAD HOT AND COLD VALVES W/PLASTIC NUTS	1
1.1	1-109	WIDESPREAD VALVE COLD LAV 16PT	1
1.2	1-110	WIDESPREAD VALVE HOT LAV 16PT	1
2	10719/00	POP-UP ROD, 10-24, 14" LONG	1
3	10982	HOSE, 3/8" COMP. X 1/2" NPSM - 12"L	2
4	3-046/00	POP-UP DRAIN ASSEMBLY (2-101, 2-102)	1
5	3-179/00	WIDESPREAD FAUCET GOOSENECK HIGH SPOUT, BASIC	1
5.1	P02035_2/00	ESCUTCHEON, CONTEMPORARY	1
5.2	2-164/00	SUB ASSY. SPOUT HIGH ARC, WIDESPREAD BASIC	1
5.3	11428	AERATOR CACHE TINY JUNIOR 1.2GPM 43.2260,450 PINK	1
5.4	P05022	AERATOR, BASIC KEY, PLASTIC GREEN	1
5.5	1-112	TEE VALVE, 3/8" NPSM X 3/8" COMPRESSION	1
5.6	10746	NUT, 3/8"-18 NPSL	1
5.7	92174	WASHER MOUNT WIDESPREAD (3/8")	1
5.8	10745	THREAD ALL, 3/8"-18 NPSL	1
6	3-443/00	ASSY. BLADE CROSS HANDLE, BASIC	2
6.1	3-440/00	ASSY. BLADE HANDLE, BASIC SERIES	1
6.2	P02035_2/00	ESCUTCHEON, CONTEMPORARY	1
6.3	P02035_1	HUB ESCUTCHEON, CONTEMPORARY TOP	1
7	P04019/00	POP-UP, BASIC, W/ 10-24 THREAD	1

E

ALL	B	UPDATED WITH SUB ASSEMBLIES	2/8/2016	GRE
-----	---	-----------------------------	----------	-----

ZONE	REV.	DESCRIPTION	DATE	APPROVED
------	------	-------------	------	----------

REVISIONS				
-----------	--	--	--	--

1261 LOGAN AVENUE
COSTA MESA, CALIFORNIA 92626
PHONE: 714.361.4800
FAX: 714.617.3120

PHYLORICH®

Defining Luxury Since 1959

PROPRIETARY AND CONFIDENTIAL
THE INFORMATION CONTAINED IN THIS DRAWING IS THE SOLE PROPERTY OF RISS MANUFACTURING. ANY REPRODUCTION IN PART OR AS A WHOLE WITHOUT THE WRITTEN PERMISSION OF RISS MANUFACTURING IS PROHIBITED.

NEXT ASSY		USED ON		INTERPRET GEOMETRIC DIMENSIONING & TOLERANCING IN ACCORDANCE WITH ASME Y14.5-2009 & ASME Y14.41-2003 STANDARDS. UNLESS OTHERWISE SPECIFIED, DIMENSIONS ARE IN INCHES. TOLERANCES ARE:		
APPLICATION		FRACTIONS ±1/64"	DECIMALS X.X: ±.1 X.XX: ±.01 X.XXX: ±.005	ANGULAR ±.5°		
MATERIAL	DRAWN		NAME	DATE		
FINISH	CHECKED		GRE	10/14/2015		
DO NOT SCALE DRAWING						

WIDESPREAD FAUCET, BLADE CROSS HANDLES, HIGH SPOUT, BASIC SERIES.

SIZE	ASM/PRT NO.	REV
A	D137/00	B

SCALE: 1:5 WEIGHT: lbs. SHEET 1 OF 2

5

4

3

2

1