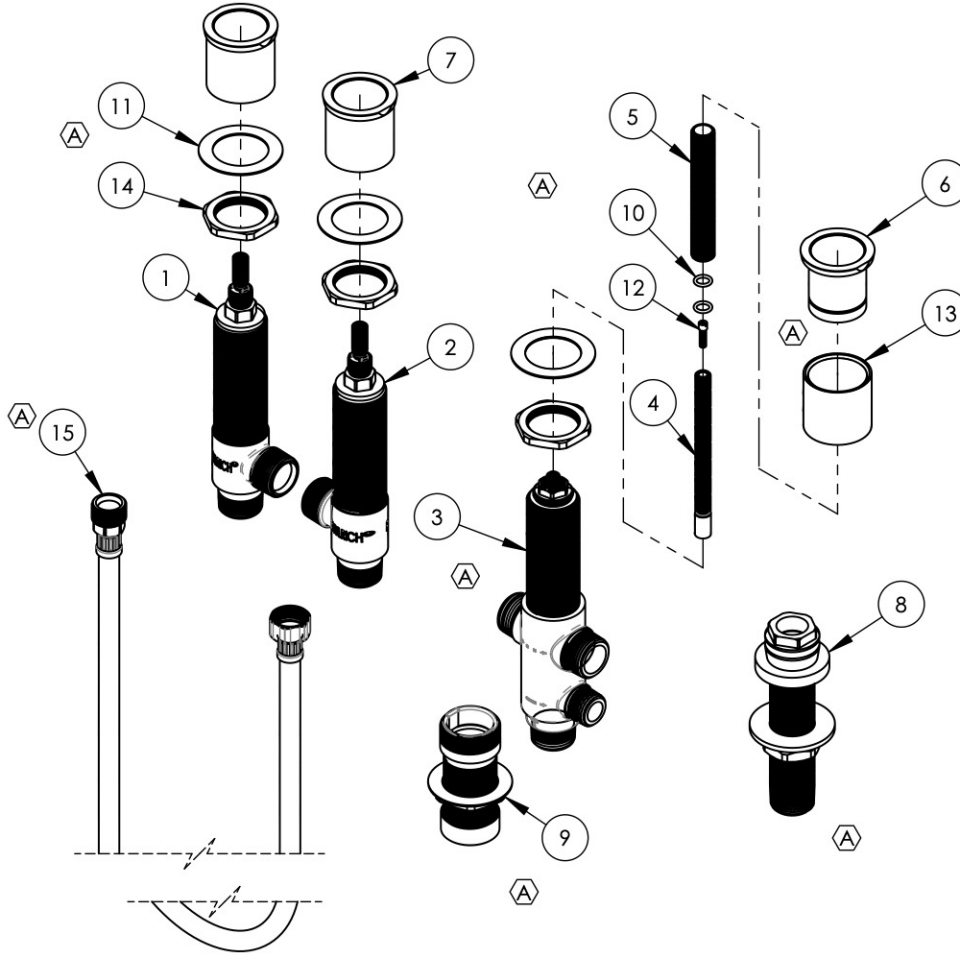


- NOTE(S):
 1. PART NUMBER, "/00" DENOTES PART SHALL HAVE FINISH.
 2. APPLY NSF COMPLIANT GREASE TO ANY O-RING, SEALING JOINTS, AND/OR PIVOTAL POINTS.
 3. APPLY NSF COMPLIANT LOCTITE TO THREADED AREA.
 4. APPLY NSF COMPLIANT REMOVABLE (BLUE) LOCTITE TO THREADED AREA.
 5. SILVER SOLDER JOINTS SHALL BE FULLY WETTED VIA CAPILLARY ACTION AND COMPLETELY NON-POROUS.

- G
- L
- B
- S



ITEM NO.	PART NUMBER	DESCRIPTION	QTY.
1	1-064	VALVE, ROMAN TUB 3/4" COLD	1
2	1-065	VALVE, ROMAN TUB 3/4" HOT	1
3	1-081	DECK DIVERTER VALVE ASSY, TWO FUNCTION	1
4	10054	STEM EXTENSION, 6" LONG 20PT INT. TO 16PT LONG EXT. BROACH	1
5	10209	SHANK, NIPPLE THREAD ALL 9/16"-20UN WITH .433"ID	1
6	11077	SLEEVE MOUNT, DECK (ROMAN) TUB	1
7	2-171	CONVERSION KIT FOR DECK TUB SET	1
8	2-187	QUICK CONNECT KIT WITH NIPPLE	1
9	2-191	ASSY, HANDSHOWER ROUGH MOUNT	1
10	90011	O-RING, 5/16"ID X 1/16"THK, AS-568-011	2
11	92138	BRASS WASHER, THIN	3
12	92157	SCREW, SMALL HD M4X0.7 - 1/2"L	1
13	92180	EXTENSION SLEEVE, WIDESPREAD	1
14	92313	HEX NUT, 1-1/4"-20 THREAD	3
15	K6100X5HP	HOSE, HIGH PRESSURE, 1/2" X 14 NPS, 36" L	1

ALL	A	UPDATE HOSE, HS MOUNT, DIVERTER ASSY, REMOVE QUICK CONNECT T, ADD SLEEVE MOUNT, NUT/WASHER	7/12/2021	AMM
ZONE	REV.	DESCRIPTION	DATE	APPROVED
REVISIONS				

1261 LOGAN AVENUE
 COSTA MESA, CALIFORNIA 92626
 PHONE: 714.361.4800
 FAX: 714.617.3120



MANUFACTURING

PROPRIETARY AND CONFIDENTIAL
 THE INFORMATION CONTAINED IN THIS DRAWING IS THE SOLE PROPERTY OF RSS MANUFACTURING. ANY REPRODUCTION IN PART OR AS A WHOLE WITHOUT THE WRITTEN PERMISSION OF RSS MANUFACTURING IS PROHIBITED.

NEXT ASSY	USED ON	FRACTIONS ±1/64"	DECIMALS X.X: ±.1 X.XX: ±.01 X.XXX: ±.005	ANGULAR ±.5°
APPLICATION				
MATERIAL			NAME	DATE
FINISH		DRAWN	LLO	12/9/2015
DO NOT SCALE DRAWING				
CHECKED		GRE		

DECK TUB WITH HAND SHOWER VALVE (MIX-STRIA)			
SIZE	ASM/PRT NO.	REV	
A	80001247	A	
SCALE: 1:4.5	WEIGHT: lbs.	SHEET 1 OF 2	