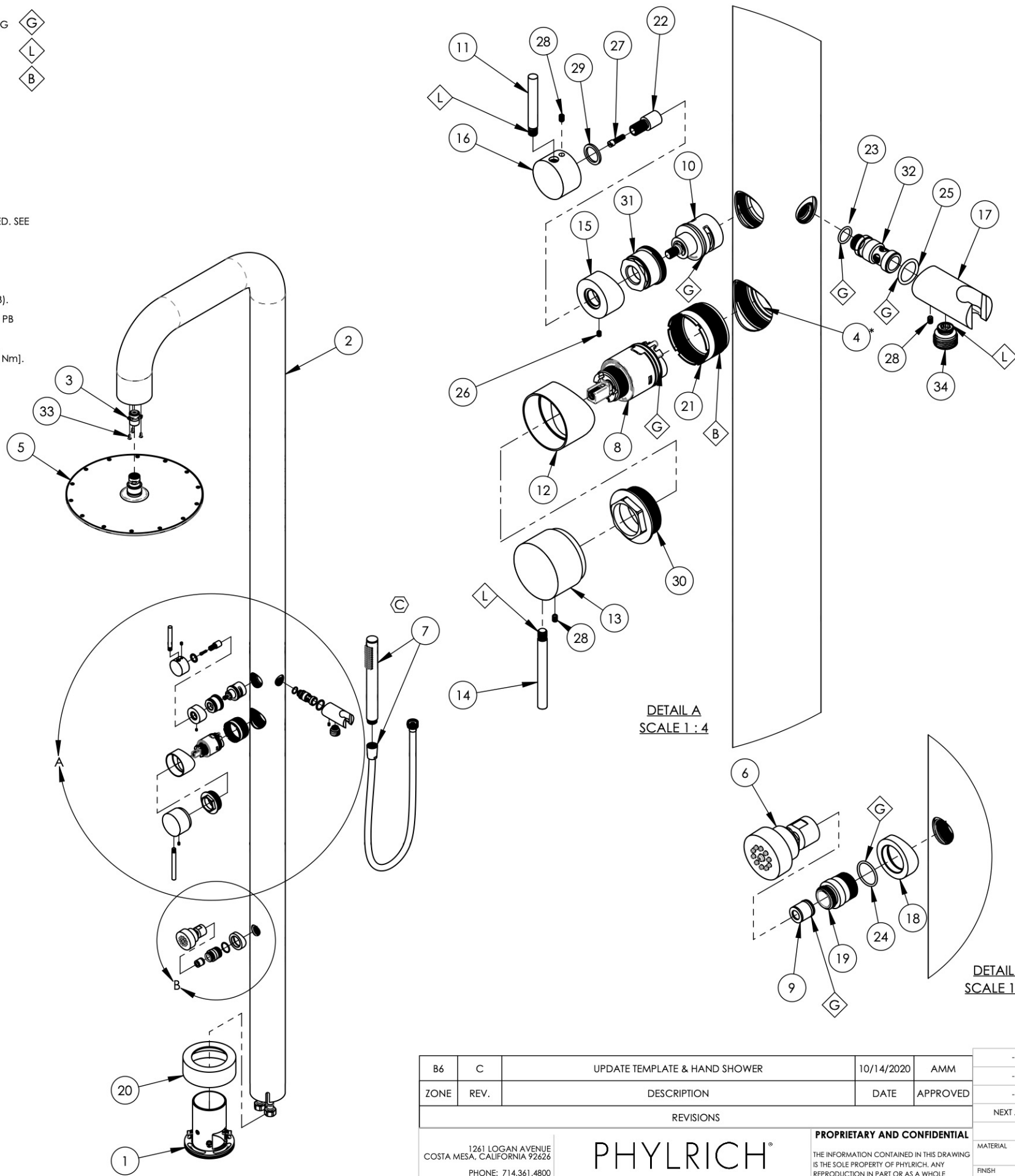


- NOTE(S):
- 1. APPLY NSF COMPLIANT GREASE TO ANY O-RING, SEALING JOINTS, AND/OR PIVOTAL POINTS. G
  - 2. APPLY NSF COMPLIANT LOCTITE TO THREADED AREA. L
  - 3. APPLY TEMPORARY (BLUE) LOCTITE TO THREADED AREA. B
4. TOOLS NEEDED-REQUIRED FOR ASSEMBLY:
- A. ALLEN KEY SIZE, 1/16"
  - B. ALLEN KEY SIZE, 5/64"
  - C. ALLEN KEY SIZE, 3/16"
  - D. ALLEN KEY SIZE, 3/8"
  - E. FLAT HEAD SCREWDRIVER, 3/16" WIDTH
  - F. PHILLIPS HEAD SCREWDRIVER, NO.2 DRIVE
  - G. OPEN-END WRENCH, SIZE 5/8" [16]
  - H. SOCKET, SIZE 1-1/18"
  - I. PLUMBERS SOCKET, 1-11/32" SIZE
  - J. SPANNER WRENCH (SPECIAL)
5. ITEM #4 SHALL BE PRE-ASSEMBLED AND INSTALLED VIA BOTTOM OF MAIN TUBE (#2), ENSURE HOLES ARE ALIGNED. SEE SUB-ASSEMBLY DRAWING FOR PARTS BREAKDOWN.
6. ITEM #21 SHALL BE USED TO HOLD INTERNAL BODY IN POSITION.
7. CUT EXCESS POLY TUBING FROM TOP SHOWERHEAD CONNECTION, ENSURE STRAIGHT CUT AND POLY TUBE IS PUSHED FULLY INTO #3 BEFORE INSTALLING SCREWS (#33).
8. RECOMMENDED TORQUE SPECIFICATION FOR ITEM #30, PB CARTRIDGE (#8), SHALL BE 7.38 - 8.85 FT-LB [10-12 Nm].
9. RECOMMENDED TORQUE SPECIFICATION FOR ITEM #31, DIVERTER CARTRIDGE (#10), SHALL BE 5.9-7.38 FT-LB [8-10 Nm].



ITEM NO.	PART NUMBER	DESCRIPTION	QTY.
1	2-318	ASSY, MOUNTING BASE WITH HARDWARE, OUTDOOR SHOWER	1
2	2-321/00	MAIN TUBE, WELDED, OUTDOOR SHOWER 3FUNCTION	1
3	2-323	ASSY, SPEEDFIT TO SHOWERHEAD CONNECTION	1
4	2-326	ASSY, BODY INTERNAL, PRESSURE BALANCE W/ 3WAY DIVERTER	1
5	3-338/00	SHOWERHEAD, RAIN ROUND 12"	1
6	3-611/00	SPRAY HEAD, BODY/FOOT CONTEMPORARY	1
7	4-025/00	HAND SHOWER HEAD, HOSE, CYLINDER	1
8	10551	CARTRIDGE, PB B2B 180° REVERSE	1
9	10673	CHECK VALVE CV15FR 1.75 GPM	1
10	11297	CARTRIDGE, DIVERTER, 3WAY, NON-SHARE W/ OFF	1
11	11609/00	HANDLE, LEVER, TUB FILLER	1
12	11831/00	COVER SLEEVE, PB ECONO, EXPOSED SHOWER	1
13	11832/00	HUB HANDLE, PB EXPOSED SHOWER, BASIC DOS GRANDE	1
14	11833/00	HANDLE, LEVER, PB EXPOSED SHOWER	1
15	11834/00	COVER SLEEVE, DIVERTER, EXPOSED SHOWER	1
16	11835/00	HUB HANDLE, DIVERTER, PB EXPOSED SHOWER	1
17	11836/00	SHOWER HOOK, EXPOSED SHOWER	1
18	11837/00	ESCUTCHEON SADDLE, FOOTWASH & ARM, EXPOSED SHOWER	1
19	11838/00	EXT. CONNECTION, FOOTWASH, EXP. SHOWER	1
20	11841/00	MAIN BASE ESCUTCHEON, EXPOSED SHOWER PB, 3INCHER	1
21	11844	SLEEVE, PRESSURE BALANCE, EXPOSED SHOWER	1
22	11848	STEM ADAPTOR, 20PT INT. TO 16PT EXT.	1
23	90014	O-RING, 1/2"ID X 5/8"OD X 1/16"THK, AS-568-014	1
24	90019	O-RING, 13/16"ID X 15/16"OD X 1/16"THK, AS-568-019	1
25	90116	O-RING, 3/4"ID X 15/16"OD X 3/32"THK, AS-568-116	1
26	92005	SET SCREW, CUP PT 6-32 UNC THREAD 3/16"L	1
27	92157	SCREW, SMALL HD M4X0.7 - 1/2"L	1
28	92162	SET SCREW, CUP PT. 8-32 UNC X 1/4"L	3
29	92404	WEAR WASHER, HANDLE	1
30	92420	NUT, 40MM PB CARTRIDGE	1
31	92421	NUT MOUNTING, DIVERTER 31MM	1
32	92422	INJECTOR MOUNT, HANDSHOWER HOLDER	1
33	92428	SCREW, FLAT HD PHIL., 6-32 X 3/8"L	3
34	P18011/00	CONNECTOR OUTLET 1/2", HOUSING OV10	1

B6	C	UPDATE TEMPLATE & HAND SHOWER	10/14/2020	AMM
ZONE	REV.	DESCRIPTION	DATE	APPROVED

REVISIONS

**PHYLIRICH**  
Defining Luxury Since 1959

**PROPRIETARY AND CONFIDENTIAL**

THE INFORMATION CONTAINED IN THIS DRAWING IS THE SOLE PROPERTY OF PHYLIRICH. ANY REPRODUCTION IN PART OR AS A WHOLE WITHOUT THE WRITTEN PERMISSION OF PHYLIRICH IS PROHIBITED.

INTERPRET GEOMETRIC DIMENSIONING & TOLERANCING IN ACCORDANCE WITH ASME Y14.5-2009 & ASME Y14.41-2003 STANDARDS. UNLESS OTHERWISE SPECIFIED, DIMENSIONS ARE IN INCHES. TOLERANCES ARE:		
	<b>FRACTIONS</b> ±1/16"	<b>DECIMALS</b> X.X: ±.1 X.XX: ±.01 X.XXX: ±.005
	<b>ANGULAR</b> ±2°	
NEXT ASSY	USED ON	
APPLICATION		
MATERIAL	NAME	DATE
FINISH	DRAWN	MAF
	CHECKED	MAF 11/28/2018

**ASSY, EXPOSED SHOWER, PB W/ 2WAY DIV. SHOWER & WAND**

SIZE	ASM/PRT NO.	REV
<b>B</b>	<b>620/00</b>	<b>C</b>

SCALE: 1:10      WEIGHT: lbs.      SHEET 1 OF 2