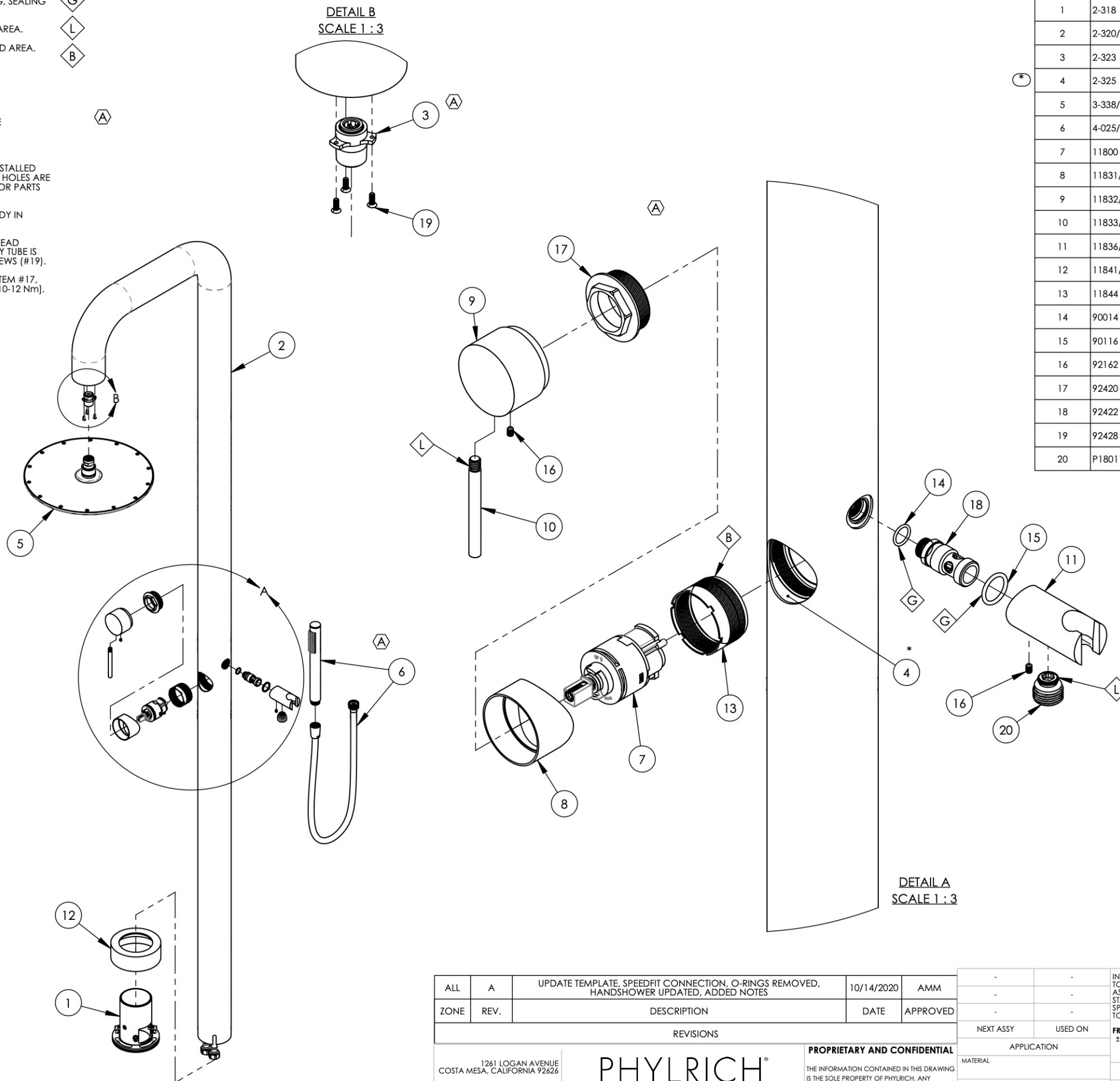


- NOTE(S):
1. APPLY NSF COMPLIANT GREASE TO ANY O-RING, SEALING JOINTS, AND/OR PIVOTAL POINTS.
 2. APPLY NSF COMPLIANT LOCTITE TO THREADED AREA.
 3. APPLY TEMPORARY (BLUE) LOCTITE TO THREADED AREA.
 4. TOOLS NEEDED-REQUIRED FOR ASSEMBLY:
 - A. ALLEN KEY SIZE, 1/16"
 - B. ALLEN KEY SIZE, 5/64"
 - C. ALLEN KEY SIZE, 3/16"
 - D. ALLEN KEY SIZE, 3/8"
 - E. FLAT HEAD SCREWDRIVER, 3/16" WIDTH
 - F. PHILLIPS HEAD SCREWDRIVER, NO.2 DRIVE
 - G. OPEN-END WRENCH, SIZE 5/8" [16]
 - H. SOCKET, SIZE 1-1/18"
 - I. PLUMBERS SOCKET, 1-11/32" SIZE
 - J. SPANNER WRENCH (SPECIAL)
 - K. ITEM #4 SHALL BE PRE-ASSEMBLED AND INSTALLED VIA BOTTOM OF MAIN TUBE (#2). ENSURE HOLES ARE ALIGNED. SEE SUB-ASSEMBLY DRAWING FOR PARTS BREAKDOWN.

5. ITEM #13 SHALL BE USED TO HOLD INTERNAL BODY IN POSITION.
6. CUT EXCESS POLY TUBING FROM TOP SHOWERHEAD CONNECTION, ENSURE STRAIGHT CUT AND POLY TUBE IS PUSHED FULLY INTO #3 BEFORE INSTALLING SCREWS (#19).
7. RECOMMENDED TORQUE SPECIFICATION FOR ITEM #17, PB CARTRIDGE (#7), SHALL BE 7.38 - 8.85 FT-LB [10-12 Nm].



ITEM NO.	PART NUMBER	DESCRIPTION	QTY.
1	2-318	ASSY, MOUNTING BASE WITH HARDWARE, OUTDOOR SHOWER	1
2	2-320/00	MAIN TUBE, WELDED, TWO FUNCTION	1
3	2-323	ASSY, SPEEDFIT TO SHOWERHEAD CONNECTION	1
4	2-325	BODY INTERNAL, PB TWO FUNCTION	1
5	3-338/00	SHOWERHEAD, RAIN ROUND 12"	1
6	4-025/00	HAND SHOWER HEAD, HOSE, CYLINDER	1
7	11800	CARTRIDGE, PRESSURE BALANCE W/ INT. DIVERTER, JL02BD-001	1
8	11831/00	COVER SLEEVE, PB ECONO, EXPOSED SHOWER	1
9	11832/00	HUB HANDLE, PB EXPOSED SHOWER, BASIC DOS GRANDE	1
10	11833/00	HANDLE, LEVER, PB EXPOSED SHOWER	1
11	11836/00	SHOWER HOOK, EXPOSED SHOWER	1
12	11841/00	MAIN BASE ESCUTCHEON, EXPOSED SHOWER PB, 3INCHER	1
13	11844	SLEEVE, PRESSURE BALANCE, EXPOSED SHOWER	1
14	90014	O-RING, 1/2"ID X 5/8"OD X 1/16"THK, AS-568-014	1
15	90116	O-RING, 3/4"ID X 15/16"OD X 3/32"THK, AS-568-116	1
16	92162	SET SCREW, CUP PT. 8-32 UNC X 1/4"L	2
17	92420	NUT, 40MM PB CARTRIDGE	1
18	92422	INJECTOR MOUNT, HANDSHOWER HOLDER	1
19	92428	SCREW, FLAT HD PHIL., 6-32 X 3/8"L	3
20	P18011/00	CONNECTOR OUTLET 1/2", HOUSING OV10	1

ALL	A	UPDATE TEMPLATE, SPEEDFIT CONNECTION, O-RINGS REMOVED, HANDSHOWER UPDATED, ADDED NOTES	10/14/2020	AMM
ZONE	REV.	DESCRIPTION	DATE	APPROVED
REVISIONS				
1261 LOGAN AVENUE COSTA MESA, CALIFORNIA 92626 PHONE: 714.361.4800 FAX: 714.617.3120		PHYLIRICH Defining Luxury Since 1959		
PROPRIETARY AND CONFIDENTIAL				
THE INFORMATION CONTAINED IN THIS DRAWING IS THE SOLE PROPERTY OF PHYLIRICH. ANY REPRODUCTION IN PART OR AS A WHOLE WITHOUT THE WRITTEN PERMISSION OF PHYLIRICH IS PROHIBITED.				

NEXT ASSY	USED ON	FRACTIONS ±1/16"	DECIMALS X.X: ±.1 X.XX: ±.01 X.XXX: ±.005	ANGULAR ±2°
APPLICATION		MATERIAL	NAME	DATE
FINISH		DRAWN	MAF	6/24/2019
DO NOT SCALE DRAWING		CHECKED	MAF	11/28/2018

ASSY, EXPOSED SHOWER, PB W/ 2WAY DIV. SHOWER & WAND		
SIZE	ASM/PRT NO.	REV
B	610/00	A
SCALE: 1:10	WEIGHT: lbs.	SHEET 1 OF 2