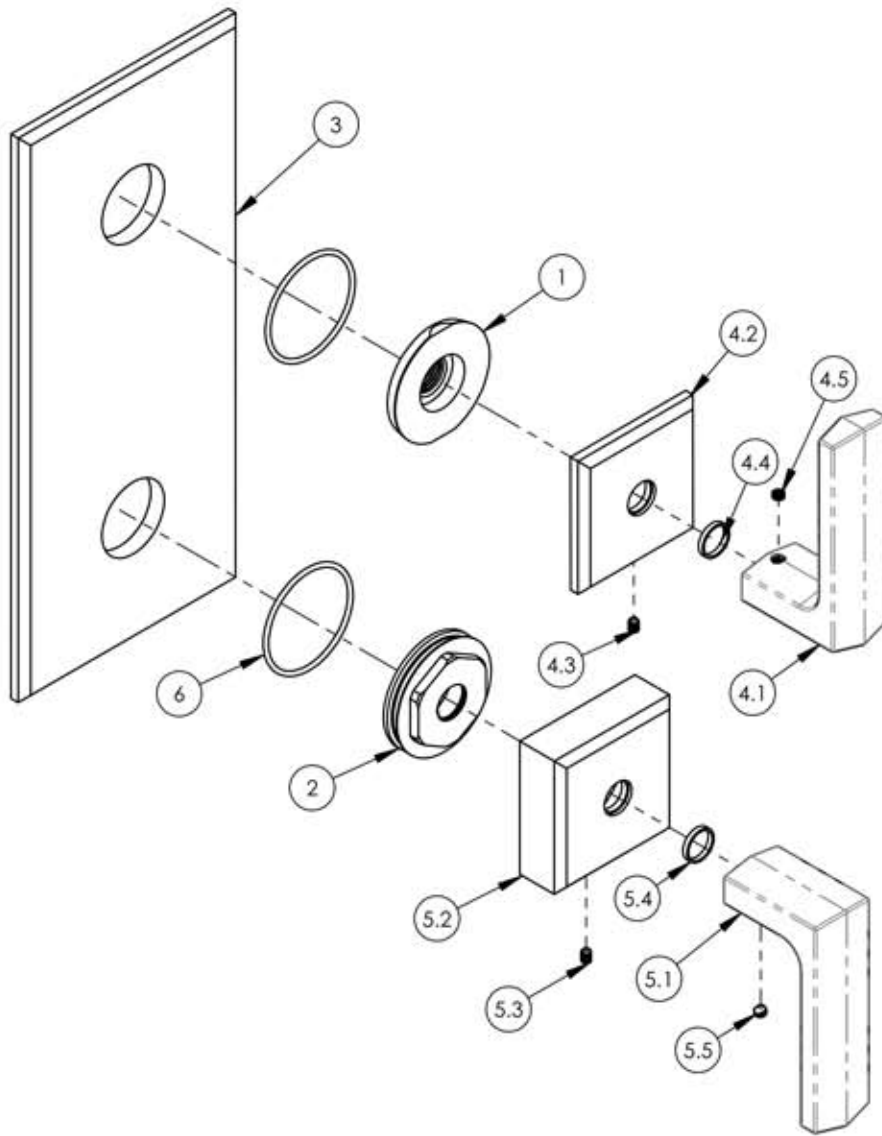


A

B

C

D



ITEM NO.	PART NUMBER	DESCRIPTION	QTY.
1	11003	SLEEVE MOUNT, WALL MT WIDESPREAD	1
2	11004	SLEEVE MOUNT, WALL SHOWER	1
3	11779/00	TRIM PLATE, TWO HANDLE, FLAT, DIAMA	1
4	3-596/00	ASSY, LEVER HANDLE, DIAMA	1
4.1	11769/00	LEVER HANDLE, DIAMA	1
4.2	11764/00	ESCUTCHEON, HANDLE, DIAMA	1
4.3	92005	SET SCREW, CUP PT 6-32 UNC THREAD 3/16'L	1
4.4	92176	WEAR WASHER	1
4.5	92163	SET SCREW, CONE PT 8-32 X 1/8'L	1
5	3-598/00	ASSY, LEVER HANDLE, TALL ESCUTCHEON HUB, DIAMA	1
5.1	11769/00	LEVER HANDLE, DIAMA	1
5.2	11777/00	TALL ESCUTCHEON HUB FOR SHOWER, DIAMA	1
5.3	92005	SET SCREW, CUP PT 6-32 UNC THREAD 3/16'L	1
5.4	92176	WEAR WASHER	1
5.5	92163	SET SCREW, CONE PT 8-32 X 1/8'L	1
6	90029	O-RING, 1-5/8"ID X 1-3/4"OD X 1/16"THK. AS-568-029	2

E

ZONE	REV.	DESCRIPTION	DATE	APPROVED
REVISIONS				

1261 LOGAN AVENUE COSTA MESA, CALIFORNIA 92626 PHONE: 714.361.4800 FAX: 714.617.3120	<h1>PHYLORICH®</h1> <p>Defining Luxury Since 1959</p>	PROPRIETARY AND CONFIDENTIAL <small>THE INFORMATION CONTAINED IN THIS DRAWING IS THE SOLE PROPERTY OF RSS MANUFACTURING. ANY REPRODUCTION IN PART OR AS A WHOLE WITHOUT THE WRITTEN PERMISSION OF RSS MANUFACTURING IS PROHIBITED.</small>
---	---	--

-		INTERPRET GEOMETRIC DIMENSIONING & TOLERANCING IN ACCORDANCE WITH ASME Y14.5-2009 & ASME Y14.41-2003 STANDARDS, UNLESS OTHERWISE SPECIFIED. DIMENSIONS ARE IN INCHES. TOLERANCES ARE:		
NEXT ASSY	USED ON	FRACTIONS ±1/64"	DECIMALS X.X: ±.1 X.XX: ±.01 X.XXX: ±.005	ANGULAR ±.5°
APPLICATION				
MATERIAL				
FINISH	DRAWN	NAME	DATE	
	CHECKED	AMM	1/18/2019	
DO NOT SCALE DRAWING				

THERM, SHOWER TRIM, TWO HANDLE-LEVER, DIAMA

SIZE	ASM/PRT NO.	REV
A	4-568/00	
SCALE: 1:2.5	WEIGHT: lbs.	SHEET 1 OF 2

5

4

3

2

1