

NOTE(S):
 1. PART NUMBER, "/00" DENOTES PART SHALL HAVE FINISH.

2. APPLY NSF COMPLIANT GREASE TO ANY O-RING, SEALING JOINTS, AND/OR PIVOTAL POINTS.

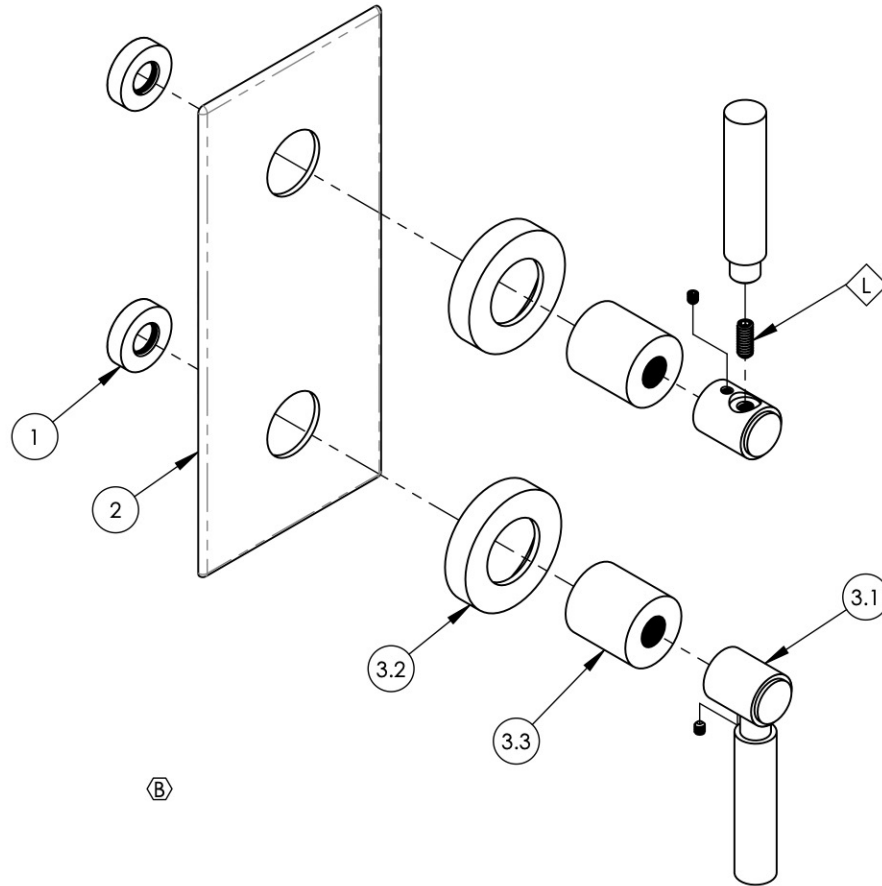
3. APPLY NSF COMPLIANT LOCTITE TO THREADED AREA.

4. APPLY NSF COMPLIANT REMOVABLE (BLUE) LOCTITE TO THREADED AREA.

5. SILVER SOLDER JOINTS SHALL BE FULLY WETTED VIA CAPILLARY ACTION AND COMPLETELY NON-POROUS.



ITEM NO.	PART NUMBER	DESCRIPTION	QTY.
1	11087	SLEEVE FOR PB-THERM PLATE	2
2	11204/00	PLATE, TWO HANDLE FLAT RADII EDGE	1
3	3-441/00	ASSY, LEVER HANDLE, BASIC	2
3.1	3-408/00	ASSY. LEVER HANDLE, BASIC SERIES.	1
3.2	P02035_2/00	ESCUTCHEON, CONTEMPORARY	1
3.3	P02035_1/00	HUB ESCUTCHEON, CONTEMPORARY TOP	1



ZONE	REV.	DESCRIPTION	DATE	APPROVED
B4	B	REMOVE TAPE	11/5/2021	AMM
REVISIONS				

PROPRIETARY AND CONFIDENTIAL
 THE INFORMATION CONTAINED IN THIS DRAWING IS THE SOLE PROPERTY OF PHYLRICH. ANY REPRODUCTION IN PART OR AS A WHOLE WITHOUT THE WRITTEN PERMISSION OF PHYLRICH IS PROHIBITED.
DO NOT SCALE DRAWING

1261 LOGAN AVENUE
 COSTA MESA, CALIFORNIA 92626
 PHONE: 714.361.4800
 FAX: 714.617.3120

PHYLRICH®
 Defining Luxury Since 1959

**SHOWER TRIM PLATE, TWO HANDLE,
 LEVER TUBULAR, BASIC**

SIZE A	ASM/PRT NO. 4-344/00	REV B
SCALE: 1:3	WEIGHT: lbs.	SHEET 1 OF 2