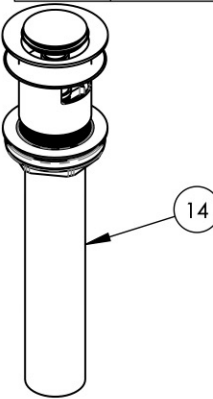
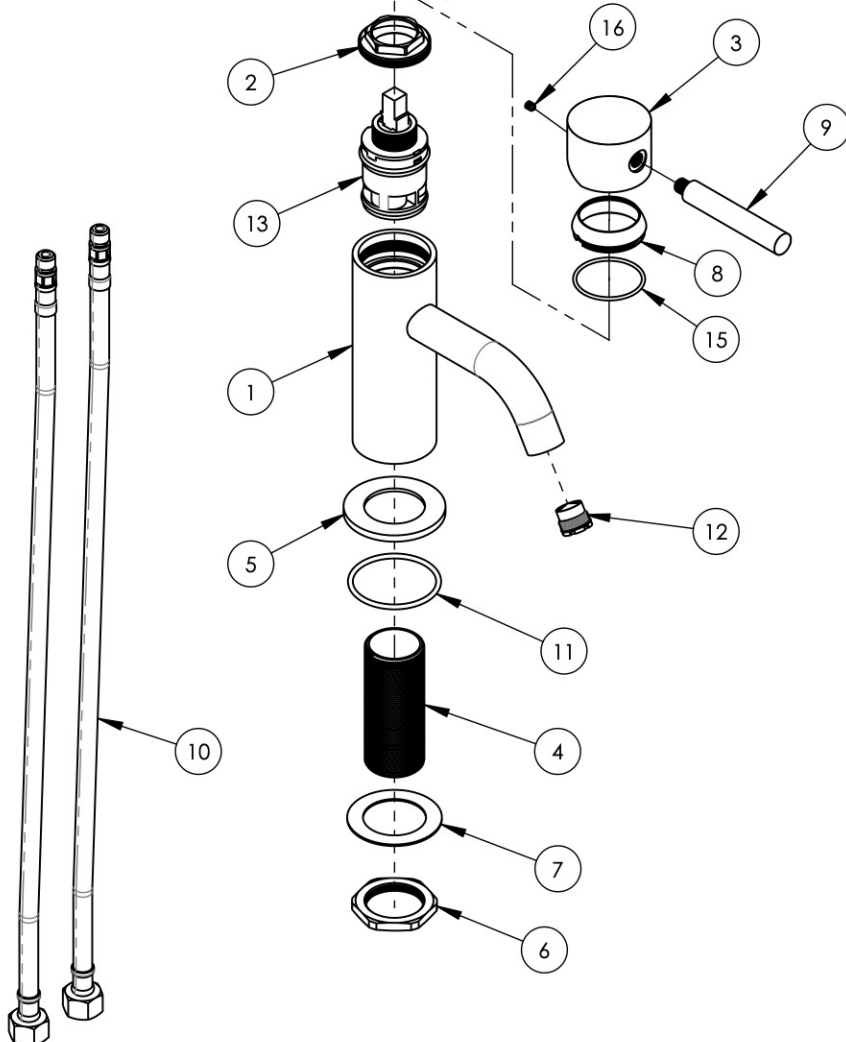


- NOTE(S):  
 1. PART NUMBER, "/00" DENOTES PART SHALL HAVE FINISH.  
 2. APPLY NSF COMPLIANT GREASE TO ANY O-RING, SEALING JOINTS, AND/OR PIVOTAL POINTS.  
 3. APPLY NSF COMPLIANT LOCTITE TO THREADED AREA.  
 4. APPLY NSF COMPLIANT REMOVABLE (BLUE) LOCTITE TO THREADED AREA.  
 5. SILVER SOLDER JOINTS SHALL BE FULLY WETTED VIA CAPILLARY ACTION AND COMPLETELY NON-POROUS.

G  
L  
B  
S



ITEM NO.	PART NUMBER	DESCRIPTION	QTY.
1	2-430/00	BODY, SPOUT, SINGLE HOLE LAV, BRAZE ASSY	1
2	12367	CARTRIDGE NUT, SINGLE HOLE LAV	1
3	11091/00	HUB HANDLE, SINGLE HOLE LAV, FROM FORGING	1
4	10872	MOUNTING TUBE, SINGLE LEVER LAV	1
5	11093/00	ESCUTCHEON BASE, CONTEMP. BASIC II	1
6	92313	HEX NUT, 1-1/4"-20 THREAD	1
7	92138	BRASS WASHER, THIN	1
8	11092/00	CAP, CONTEMP. BASIC II LAV	1
9	11094/00	HANDLE LEVER, CONTEMPORARY SINGLE CTRL LAV BASIC II	1
10	11789	HOSE, M10 X 3/8" GAS X 19"	2
11	90132	O-RING, 1-3/4"ID X 3/32THK, AS-568-132	1
12	11430	AERATOR, CACHE TOM THUMB, PINK 1.2 GPM, M16.5X1.0, NEOPERL # 44.3260.450	1
13	12371	CERAMIC CARTRIDGE, 35MM, CONNECTED PIPE TYPE	1
14	3-545/00	BRASS PUSH TYPE DRAIN, W/ OVERFLOW & SMALL PLUG	1
15	90028	O-RING, 1-3/8"ID X 1/16"THK, AS-568-028	1
16	92008	SET SCREW, CUP POINT 8-32, 3/16" L.	1

ZONE	REV.	DESCRIPTION	DATE	APPROVED
------	------	-------------	------	----------

REVISIONS

1261 LOGAN AVENUE  
 COSTA MESA, CALIFORNIA 92626  
 PHONE: 714.361.4800  
 FAX: 714.617.3120

**PHYL RICH**<sup>®</sup>  
 Defining Luxury Since 1959

**PROPRIETARY AND CONFIDENTIAL**  
 THE INFORMATION CONTAINED IN THIS DRAWING IS THE SOLE PROPERTY OF PHYL RICH. ANY REPRODUCTION IN PART OR AS A WHOLE WITHOUT THE WRITTEN PERMISSION OF PHYL RICH IS PROHIBITED.  
**DO NOT SCALE DRAWING**

SINGLE HOLE LAV, LEVER HANDLE, BASIC II

SIZE <b>A</b>	ASM/PRT NO. 230-09/00	REV C
SCALE: 1:4	WEIGHT: lbs.	SHEET 1 OF 2