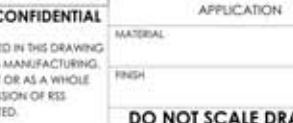
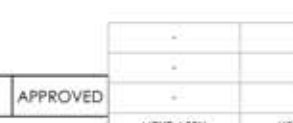
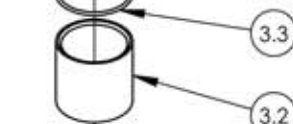
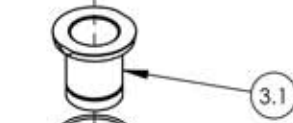
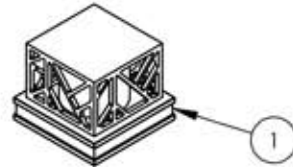


A

B

C

D



| ITEM NO. | PART NUMBER | DESCRIPTION | QTY. |
|----------|-------------|--|------|
| 1 | 3-603/00 | ASSY, SQUARE HANDLE & BASE, CAGE DESIGN, JOLIE | 2 |
| 2 | 3-604/00 | ASSY, SQUARE SPOUT & BASE, JOLIE | 1 |
| 2.1 | 11805/00 | SQUARE BASE, TOP, JOLIE | 1 |
| 2.2 | 11806/00 | SQUARE BASE, BOTTOM, JOLIE | 1 |
| 2.3 | 11804/00 | SQAURE INSERT, HANDLE, BASE | 1 |
| 2.4 | 10944/00 | SPOUT, WIDESPREAD LAV LOW MIX | 1 |
| 2.5 | 92400 | SCREW, FLAT HEAD, PHILLIPS, 6-32UNC, 5/16" LONG | 4 |
| 2.6 | 10560 | AERATOR, PCA CACHE 1.5GPM, M24X1.0 GREEN | 1 |
| 2.7 | 92158 | DOWEL PIN, 1/8" X 3/8"L | 2 |
| 2.8 | 92174 | WASHER MOUNT WIDESPREAD (3/8") | 1 |
| 2.9 | 10746 | NUT, 3/8"-18 NPSL | 1 |
| 2.10 | 10745 | THREAD ALL, 3/8"-18 NPSL - 3/8"NPT | 1 |
| 2.11 | 1-112 | TEE VALVE, 3/8" NPSM X 3/8" COMPRESSION | 1 |
| 2.12 | 90032 | O-RING, 1-7/8"ID X 2"OD X 1/16"THK, AS-568-032 | 1 |
| 3 | 2-092 | RECESSED MOUNTING KIT FOR WIDESPREAD | 2 |
| 3.1 | 10998 | SLEEVE MOUNT, WIDESPREAD | 1 |
| 3.2 | 92180 | EXTENSION SLEEVE, WIDESPREAD | 1 |
| 3.3 | 90029 | O-RING, 1-5/8"ID X 1-3/4"OD X 1/16"THK, AS-568-029 | 1 |
| 3.4 | 92251 | HEX NUT, 1"-20 THREAD | 1 |
| 3.5 | 92252 | WASHER, 1-1/32" ID 1-13/16" OD | 1 |
| 4 | 1-150 | WIDESPREAD VALVE LAV 16PT, COLD, ONLY | 1 |
| 5 | 1-149 | WIDESPREAD VALVE LAV 16PT, HOT, ONLY | 1 |
| 6 | 3-517/00 | PUSH TO CLOSE DRAIN | 1 |

| ZONE | REV. | DESCRIPTION | DATE | APPROVED |
|-----------|------|-------------|------|----------|
| REVISIONS | | | | |

| REVISIONS | | DATE | APPROVED |
|---|--|------|----------|
| <p>PHYL RICH[®]</p> <p>Defining Luxury Since 1959</p> | | | |

PROPRIETARY AND CONFIDENTIAL

THE INFORMATION CONTAINED IN THIS DRAWING IS THE SOLE PROPERTY OF RSS MANUFACTURING. ANY REPRODUCTION IN PART OR AS A WHOLE WITHOUT THE WRITTEN PERMISSION OF RSS MANUFACTURING IS PROHIBITED.

| INTERPRET GEOMETRIC DIMENSIONING & TOLERANCING IN ACCORDANCE WITH ASME Y14.5-2009 & ASME Y14.41-2003 STANDARDS. UNLESS OTHERWISE SPECIFIED, DIMENSIONS ARE IN INCHES. TOLERANCES ARE: | |
|---|--|
| FRACTIONS ±1/64" | DECIMALS X.X: ±.1 X.XX: ±.01 X.XXX: ±.005 |
| ANGULAR ±.5° | |
| NEXT ASSY | USED ON |
| APPLICATION | |
| MATERIAL | |
| FINISH | |
| DRAWN | NAME DATE |
| CHECKED | RAH 1/28/2019 |

WIDESPREAD FAUCET, SQUARE HANDLE, JOLIE SERIES

| SIZE | ASM/PRT NO. | REV |
|------------|--------------|--------------|
| A | 222-02/00 | - |
| SCALE: 1:4 | WEIGHT: lbs. | SHEET 1 OF 2 |

5

4

3

2

1