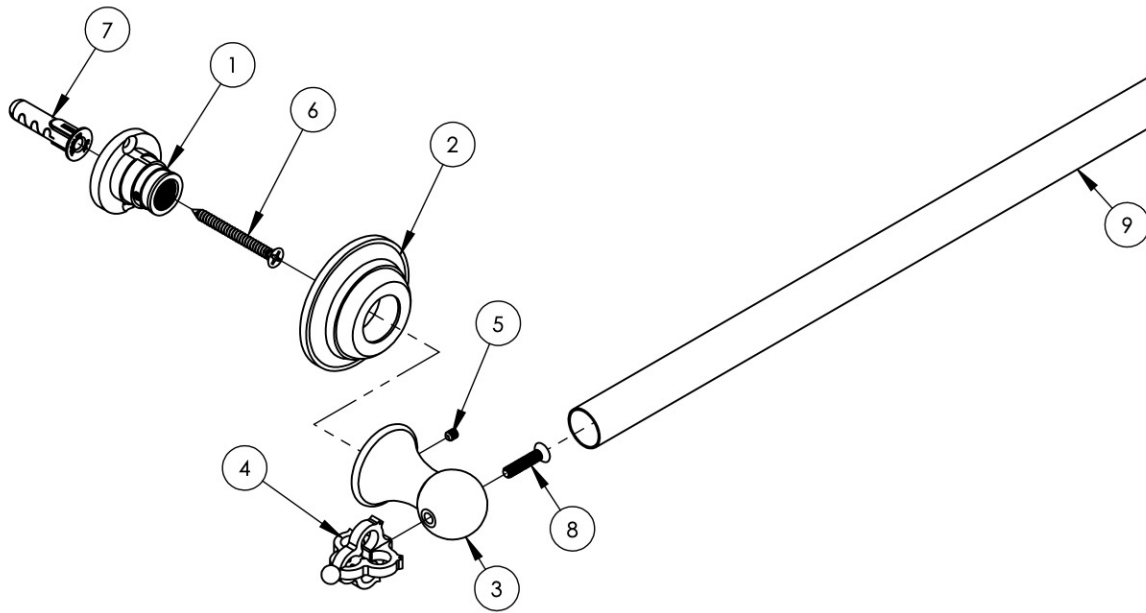
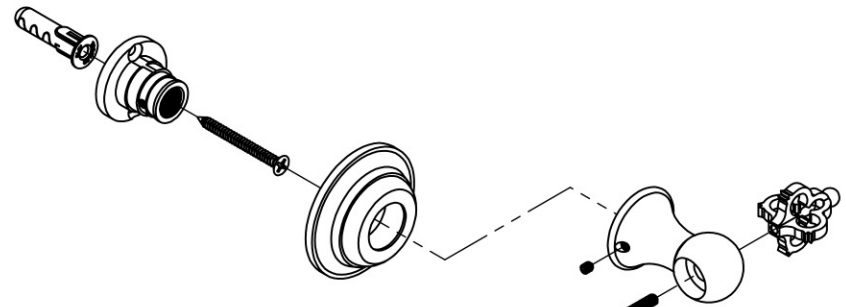


ITEM NO.	PART NUMBER	DESCRIPTION	QTY.
1	11050	MOUNTING KIT, WALL FLANGE	2
2	11277/00	ESCUTCHEON, ACCESSORIES, MAISON	2
3	11282/00	POST, TOWEL BAR, MAISON SERIES3/4"	2
4	2-039/00	ASSY, POP-UP COURONNE SERIES	2
5	92008	SET SCREW, CUP POINT 8-32	2
6	92043	SCREW, FLAT HD #10 SIZE W/ #2 PHIL DRIVE, 2"L	2
7	92046	ANCHOR SCREW 3/8" HOLE, TOGGLER AF10	2
8	92249	FLAT HD. PHILLIPS, 10-24 7/8" LONG	2
9	P23074/00	24" KLD TOWEL BAR	1



ZONE	REV.	DESCRIPTION	DATE	APPROVED
REVISIONS				
				
PROPRIETARY AND CONFIDENTIAL <small>THE INFORMATION CONTAINED IN THIS DRAWING IS THE SOLE PROPERTY OF RSS MANUFACTURING. ANY REPRODUCTION IN PART OR AS A WHOLE WITHOUT THE WRITTEN PERMISSION OF RSS MANUFACTURING IS PROHIBITED.</small>				

-	-	INTERPRET GEOMETRIC DIMENSIONING & TOLERANCING IN ACCORDANCE WITH ASME Y14.5-2009 & ASME Y14.41-2003 STANDARDS, UNLESS OTHERWISE SPECIFIED. DIMENSIONS ARE IN INCHES. TOLERANCES ARE:		
NEXT ASSY	USED ON	FRACTIONS ±1/64"	DECIMALS X.X: ±.1 X.XX: ±.01 X.XXX: ±.005	ANGULAR ±.5°
APPLICATION		MATERIAL	NAME	DATE
FINISH		DRAWN	LLO	10/22/2015
DO NOT SCALE DRAWING		CHECKED	GRE	

24" TOWEL BAR, COURONNE SERIES			
SIZE	ASM/PRT NO.	REV	
A	163-71/00	-	
SCALE: 1:3.25	WEIGHT: lbs.	SHEET 1 OF 2	

5

4

3

2

1