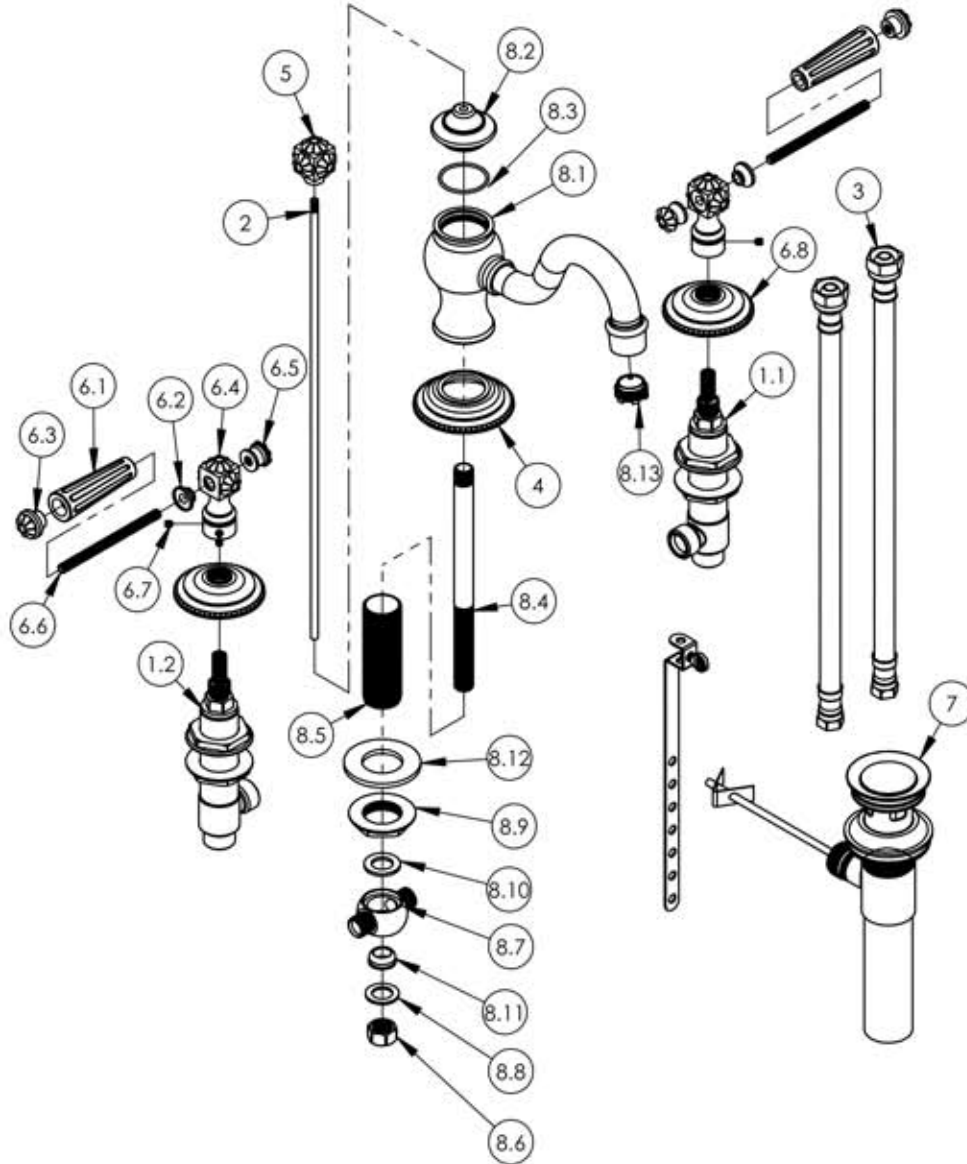


A

B

C

D



ITEM NO.	PART NUMBER	DESCRIPTION	QTY.
1	1-600	WIDESPREAD HOT AND COLD VALVES W/PLASTIC NUTS	1
1.1	1-109	WIDESPREAD VALVE COLD LAV 16PT	1
1.2	1-110	WIDESPREAD VALVE HOT LAV 16PT	1
2	10719/00	POP-UP ROD, 10-24, 14" LONG	1
3	10982	HOSE, 3/8" COMP. X 1/2" NPSM - 12'L	2
4	11180/00	ESCUTCHEON SPOUT, COURONNE SERIES	1
5	2-115/00	SUB-ASSY. FINIAL POP-UP, MARVELLE SERIES	1
6	3-030/00	HANDLE LEVER, MARVELLE SEIRES	2
6.1	10541/00	LEVER HANDLE INSERT, MARVELLE	1
6.2	11102/00	BASE HANDLE FOR LEVER HEX TRADITIONAL 500 SERIES	1
6.3	2-111/00	SUB-ASSY. END CAP FINIAL, MARVELLE	1
6.4	2-113/00	SUB-ASSY. LEVER TRASITION FINIAL, MARVELLE	1
6.5	2-112/00	SUB-ASSY. FINIAL EXTENSION BACK LEVER	1
6.6	10543	THREADED ROD, 1/4"-20 X 3"-5/8 L.	1
6.7	92008	SET SCREW, CUP POINT 8-32	2
6.8	10540/00	ESCUTCHEON, MARVELLE SERIES	1
7	3-046/00	POP-UP DRAIN ASSEMBLY (2-101, 2-102)	1
8	3-341/00	ASSY. SPOUT, WIDESPREAD	1
8.1	2-037/00	SUB-ASSY. SPOUT COURONNE/MARVELLE SERIES	1
8.2	11179/00	SPOUT CAP, COURONNE SERIES	1
8.3	90025	O-RING, 1-3/16"ID X 1/16"THK, AS-568-025	1
8.4	P33002	7" POP-UP GUIDE	1
8.5	P33008	LAV SPOUT NIPPLE	1
8.6	168B	BRASS NUT	1
8.7	2003NL	TEE VALVE FOR LAV WIDESPREAD	1
8.8	28A	BRASS WASHER	1
8.9	92037	NUT, FLANGED 1"-20 THREAD	1
8.10	92054	RUBBER WASHER, 15/16"OD X .080"THK	1

ALL	REV.	DESCRIPTION	DATE	APPROVED
A		-ASSY. UPDATED WITH SUB ASSY'S	12/4/2015	GRE

## REVISIONS

1261 LOGAN AVENUE  
COSTA MESA, CALIFORNIA 92626  
PHONE: 714.361.4800  
FAX: 714.617.3120

# PHYLIRICH®

Defining Luxury Since 1959

## PROPRIETARY AND CONFIDENTIAL

THE INFORMATION CONTAINED IN THIS DRAWING IS THE SOLE PROPERTY OF RISS MANUFACTURING. ANY REPRODUCTION IN PART OR AS A WHOLE WITHOUT THE WRITTEN PERMISSION OF RISS MANUFACTURING IS PROHIBITED.

INTERPRET GEOMETRIC DIMENSIONING & TOLERANCING IN ACCORDANCE WITH ASME Y14.5-2009 & ASME Y14.41-2003 STANDARDS. UNLESS OTHERWISE SPECIFIED, DIMENSIONS ARE IN INCHES. TOLERANCES ARE:	WIDESPREAD FAUCET, LEVER HANDLES, MARVELLE SERIES		
	SIZE	ASM/PRT NO.	REV
	<b>A</b>	162-02/00	<b>A</b>
	SCALE: 1:5	WEIGHT: lbs.	SHEET 1 OF 3

5

4

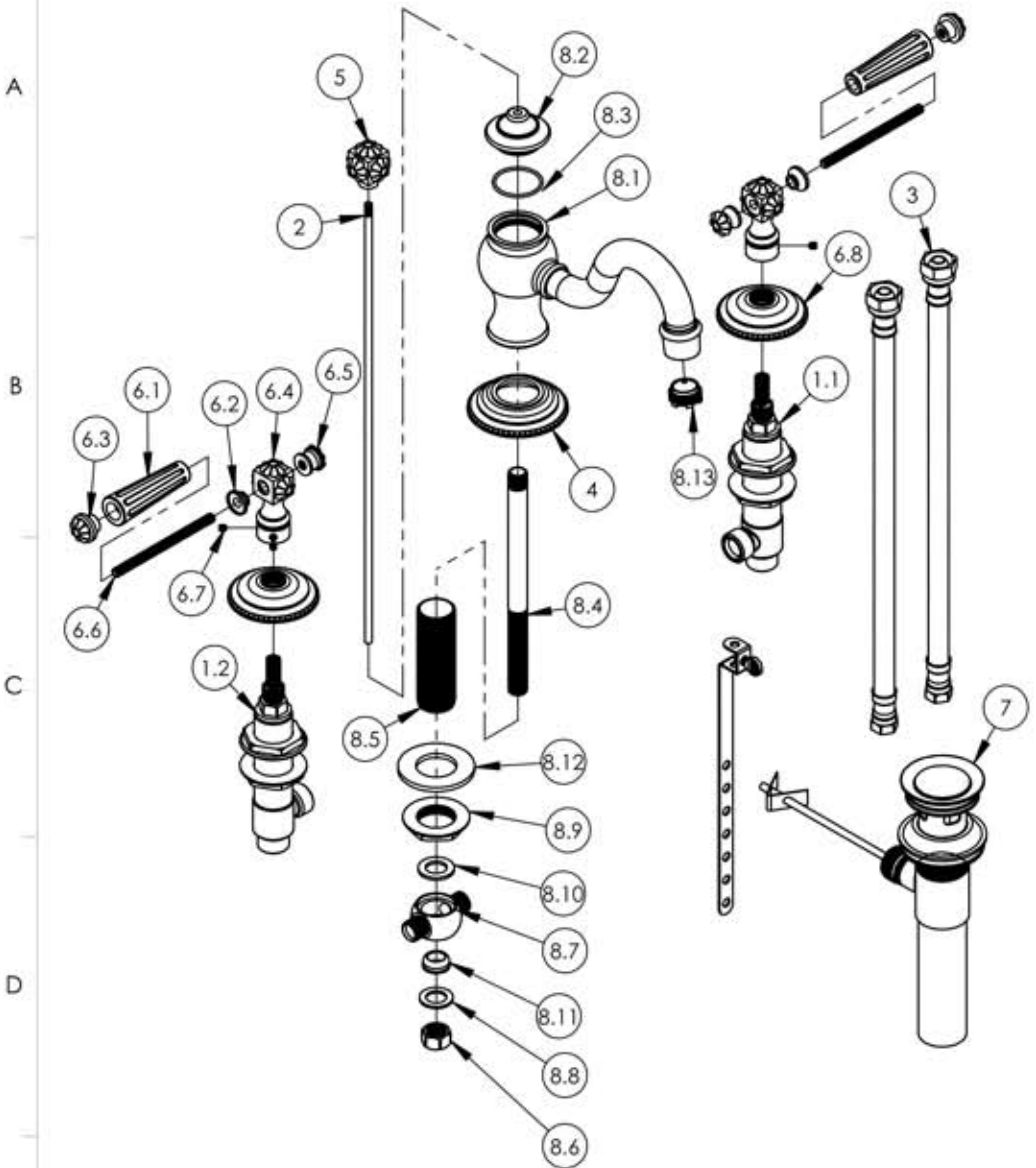
3

2

1

DO NOT SCALE DRAWING

ITEM NO.	PART NUMBER	DESCRIPTION	QTY.
8.11	954A	CONE WASHER	1
8.12	P35317	S.S. WASHER O.D 2" I.D 1" 1/16	1
8.13	P05062	AERATOR CACHE JUNIOR COIN SLOT, 1.5GPM, M21.5X1.0	1



A

B

C

D

E

ZONE	REV.	DESCRIPTION	DATE	APPROVED
REVISIONS				
1261 LOGAN AVENUE COSTA MESA, CALIFORNIA 92626 PHONE: 714.361.4800 FAX: 714.617.3120		PHYLORICH®	<b>PROPRIETARY AND CONFIDENTIAL</b> <small>THE INFORMATION CONTAINED IN THIS DRAWING IS THE SOLE PROPERTY OF RJS MANUFACTURING. ANY REPRODUCTION IN PART OR AS A WHOLE WITHOUT THE WRITTEN PERMISSION OF RJS MANUFACTURING IS PROHIBITED.</small>	
Defining Luxury Since 1959				

NEXT ASSY		USED ON		<small>INTERPRET GEOMETRIC DIMENSIONING &amp; TOLERANCING IN ACCORDANCE WITH ASME Y14.5-2009 &amp; ASME Y14.41-2003 STANDARDS. UNLESS OTHERWISE SPECIFIED, DIMENSIONS ARE IN INCHES. TOLERANCES ARE:</small>		
APPLICATION		FRACTIONS ±1/64"	DECIMALS X.X: ±.1 X.XX: ±.01 X.XXX: ±.005	ANGULAR ±.5°		
MATERIAL		NAME		DATE		
FINISH		DRAWN	LLO	10/14/2015		
DO NOT SCALE DRAWING		CHECKED	GRE			

**WIDESPREAD FAUCET, LEVER HANDLES,  
MARVELLE SERIES**

SIZE	ASM/PRT NO.	REV
A	162-02/00	A
SCALE: 1:5	WEIGHT: lbs.	SHEET 2 OF 3

5

4

3

2

1