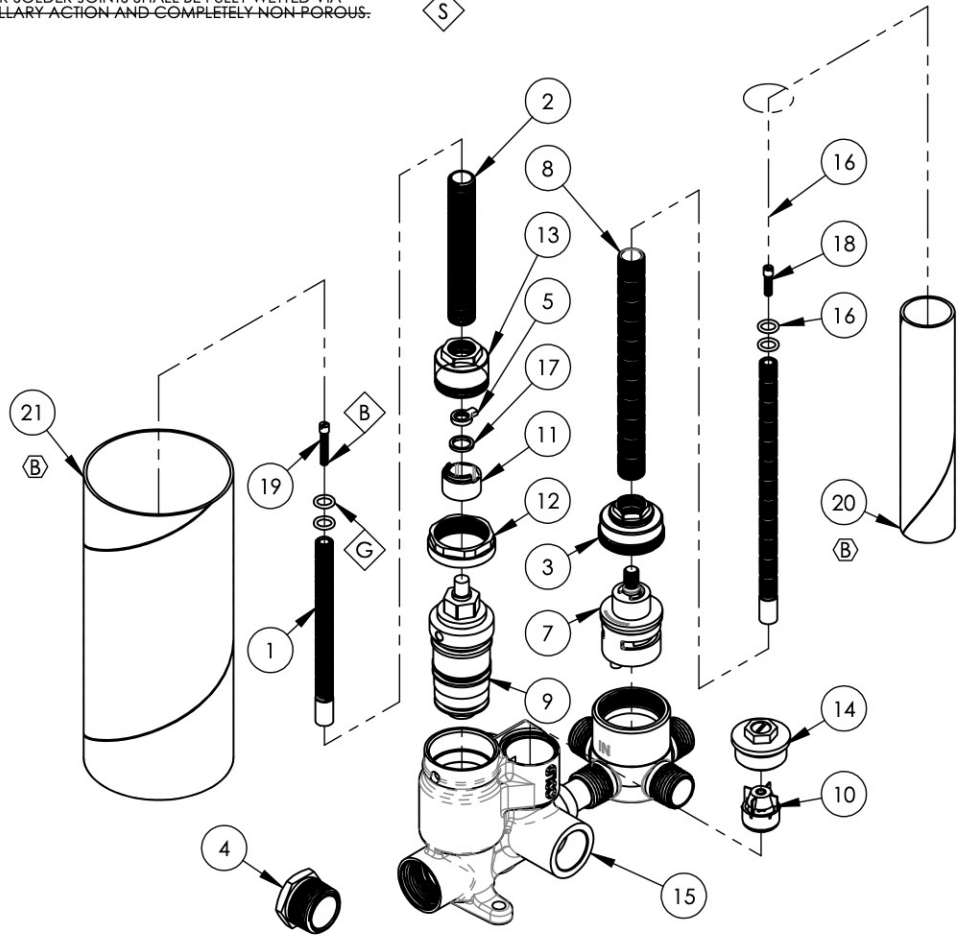


- NOTE(S):
- PART NUMBER, "/00" DENOTES PART SHALL HAVE FINISH.
 - APPLY NSF COMPLIANT GREASE TO ANY O-RING, SEALING JOINTS, AND/OR PIVOTAL POINTS.
 - APPLY NSF COMPLIANT LOCTITE TO THREADED AREA.
 - APPLY NSF COMPLIANT REMOVABLE (BLUE) LOCTITE TO THREADED AREA.
 - SILVER SOLDER JOINTS SHALL BE FULLY WETTED VIA CAPILLARY ACTION AND COMPLETELY NON-POROUS.

- G**
- L**
- B**
- S**



ITEM NO.	PART NO.	DESCRIPTION	QTY.
1	10054	STEM EXTENSION, 6" LONG 20PT INT. TO 16PT LONG EXT. BROACH	1
2	10209	SHANK, NIPPLE THREAD ALL 9/16"-20UN WITH .433"ID	1
3	10349	NUT CAP FOR 3WAY DIVERTER	1
4	10668	PLUG 3/4" NPT	1
5	11320	SAFETY AND MECHANICAL STOP, MINI THERM	1
6	11416	STEM EXTENSION, 20PT TO 16PT, XXL	1
7	11417	CARTRIDGE, DIVERTER, 3WAY, SHARED W/ OFF	1
8	11498	ALL THREAD, EXTENSION, 9/16"-20, 5-9/16"L, XXL	1
9	11583	CARTRIDGE, THERMOSTAR 3/4" S25, TYPE2	1
10	11593	CHECK VALVE, MEDI-THERMOSTATIC 3/4"	2
11	11598	CARTRIDGE LIMIT STOP SLEEVE, MEDI THERM	1
12	11599	RETAINER NUT FOR MEDI THERM CARTRIDGE	1
13	11610	MEDITHERM NUT FOR ALL THREAD	1
14	2-256	SUB ASSY, CHECK VALVE, MEDI THERM 3/4"	2
15	2-261	MEDITHERM W/ 3-WAY DIVERTER, BRAZE	1
	11677	VALVE BODY, MEDI-THERM 3/4" SWEAT & NPT OUTLET	1
	10348	VALVE BODY, DIVERTER THREE WAY 4PORT, FROM FORGED	1
	11612	REDUCER, MALES 3/4" TO 1/2"	1
16	90011	O-RING, 5/16"ID X 1/16"THK, AS-568-011	4
17	92050	WASHER ACETAL 0.060 THK	1
18	92157	SCREW, SMALL HD M4X0.7 - 1/2"L	1
19	92335	SCREW, FLAT HEAD, M4X0.7 - 1" OVERALL LENGTH	1
20	11648	MUD GUARD, CARDBOARD, LONG	1
21	12274	MUD GUARD, CARDBOARD, MEDI THERM, 3-1/8" OD X 7-1/4" LENGTH	1

C3, C5	B	UPDATED MUD GUARDS	1/26/2023	LFV
ZONE	REV.	DESCRIPTION	DATE	APPROVED
REVISIONS				

1261 LOGAN AVENUE
COSTA MESA, CALIFORNIA 92626
PHONE: 714.361.4800
FAX: 714.617.3120

PHYLIRICH
D.L. Long Lumber & Supply

PROPRIETARY AND CONFIDENTIAL
THE INFORMATION CONTAINED IN THIS DRAWING IS THE SOLE PROPERTY OF PHYLIRICH. ANY REPRODUCTION IN PART OR AS A WHOLE WITHOUT THE WRITTEN PERMISSION OF PHYLIRICH IS PROHIBITED.
DO NOT SCALE DRAWING

ASSY, 3/4" MEDI-THERMOSTATIC WITH 3-WAY DIVERTER, 5" C2C, SHARED

SIZE A	ASM/PRT NO. 1-143	REV B
SCALE: 1:4	WEIGHT: lbs.	SHEET 1 OF 2