

5

4

3

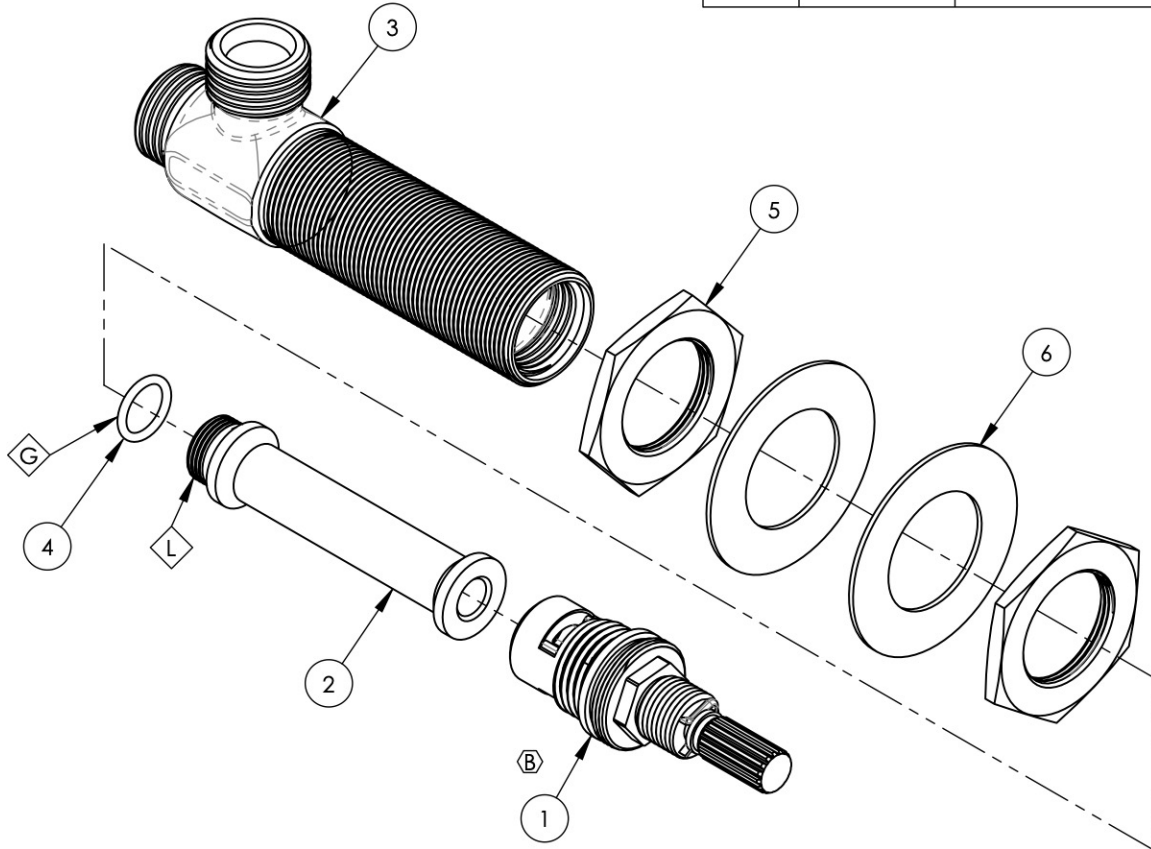
2

1

- NOTE(S):
 1. PART NUMBER, "/00" DENOTES PART SHALL HAVE FINISH.
 2. APPLY NSF COMPLIANT GREASE TO ANY O-RING, SEALING JOINTS, AND/OR PIVOTAL POINTS.
 3. APPLY NSF COMPLIANT LOCTITE TO THREADED AREA.
 4. APPLY NSF COMPLIANT REMOVABLE (BLUE) LOCTITE TO THREADED AREA.
 5. SILVER SOLDER JOINTS SHALL BE FULLY WETTED VIA CAPILLARY ACTION AND COMPLETELY NON-POROUS.



ITEM NO.	PART NUMBER	DESCRIPTION	QTY.
1	10241	CARTRIDGE, VALVE 1/2"G W/ 9/16"-20 16PT. COLD	1
2	10248	INTERNAL SEAT FOR WIDESPREAD	1
3	10716	VALVE BODY, WIDESPREAD LAV	1
4	90013	O-RING, 7/16"ID X 1/16"THK, AS-568-013	1
5	92251	HEX NUT, 1"-20 THREAD	2
6	92252	WASHER, 1-1/32" ID 1-13/16" OD	2



B3	B	UPDATE CARTRIDGE	7/1/2021	AMM
ZONE	REV.	DESCRIPTION	DATE	APPROVED
REVISIONS				

1261 LOGAN AVENUE
 COSTA MESA, CALIFORNIA 92626
 PHONE: 714.361.4800
 FAX: 714.617.3120



PROPRIETARY AND CONFIDENTIAL
 THE INFORMATION CONTAINED IN THIS DRAWING IS THE SOLE PROPERTY OF RSS MANUFACTURING. ANY REPRODUCTION IN PART OR AS A WHOLE WITHOUT THE WRITTEN PERMISSION OF RSS MANUFACTURING IS PROHIBITED.

-	-	INTERPRET GEOMETRIC DIMENSIONING & TOLERANCING IN ACCORDANCE WITH ASME Y14.5-2009 & ASME Y14.41-2003 STANDARDS, UNLESS OTHERWISE SPECIFIED. DIMENSIONS ARE IN INCHES. TOLERANCES ARE:		
1-600	-	FRACTIONS ±1/64"	DECIMALS X.X: ±.1 X.XX: ±.01 X.XXX: ±.005	ANGULAR ±.5°
NEXT ASSY	USED ON	APPLICATION		
MATERIAL	NAME DATE			
FINISH	DRAWN	MAF	2/8/2012	
DO NOT SCALE DRAWING		CHECKED		

WIDESPREAD VALVE LAV 16PT, COLD W/ MOUNTING

SIZE	ASM/PRT NO.	REV
A	1-109	B
SCALE: 1:1.5	WEIGHT: lbs.	SHEET 1 OF 1

5

4

3

2

1