

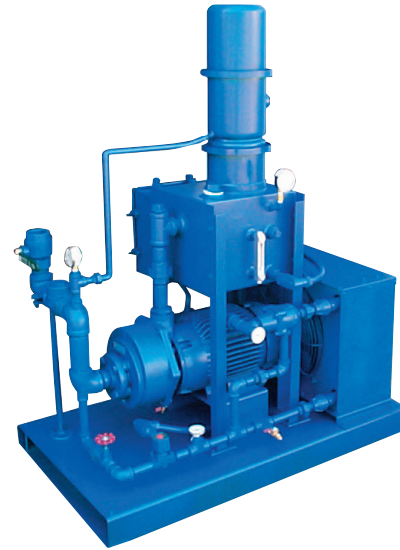
## AF OSR SYSTEMS

### Models

OSR-75 OSR-100 OSR-130

### Features

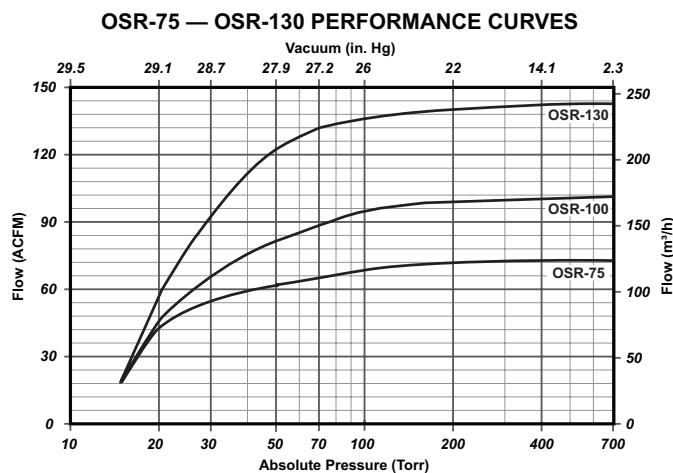
- Fluid-Vac “abuser-friendly” axial flow design
- Totally self contained package. No external sealant or cooling liquid is required.
- Close coupled compact design. No couplings to align or coupling guards to maintain.
- Robust industrial pump and motor provides years of trouble-free operation.
- High efficiency separator minimizes oil carryover.
- Fully instrumented system includes temperature gauges and inlet vacuum gauge.
- Quiet, vibration-free operation
- Inlet check valve prevents backflow when system is taken off line.



### Specifications

	MODEL	OSR-75	OSR-100	OSR-130
<b>Nominal Flow Capacity</b>	CFM / <i>m<sup>3</sup>/h</i>	75 / <b>127</b>	100 / <b>170</b>	150 / <b>255</b>
<b>Motor</b>	HP / <i>kW</i>	7.5 / <b>5.5</b>	10 / <b>7.5</b>	15 / <b>11</b>
<b>Pump RPM</b>	RPM	1750	1750	1750
<b>Oil Capacity</b>	Gallons / <i>Liters</i>	4 / <b>15</b>	4 / <b>15</b>	6 / <b>23</b>
<b>Weight</b>	lbs. / <i>kg</i>	700 / <b>320</b>	750 / <b>340</b>	850 / <b>390</b>

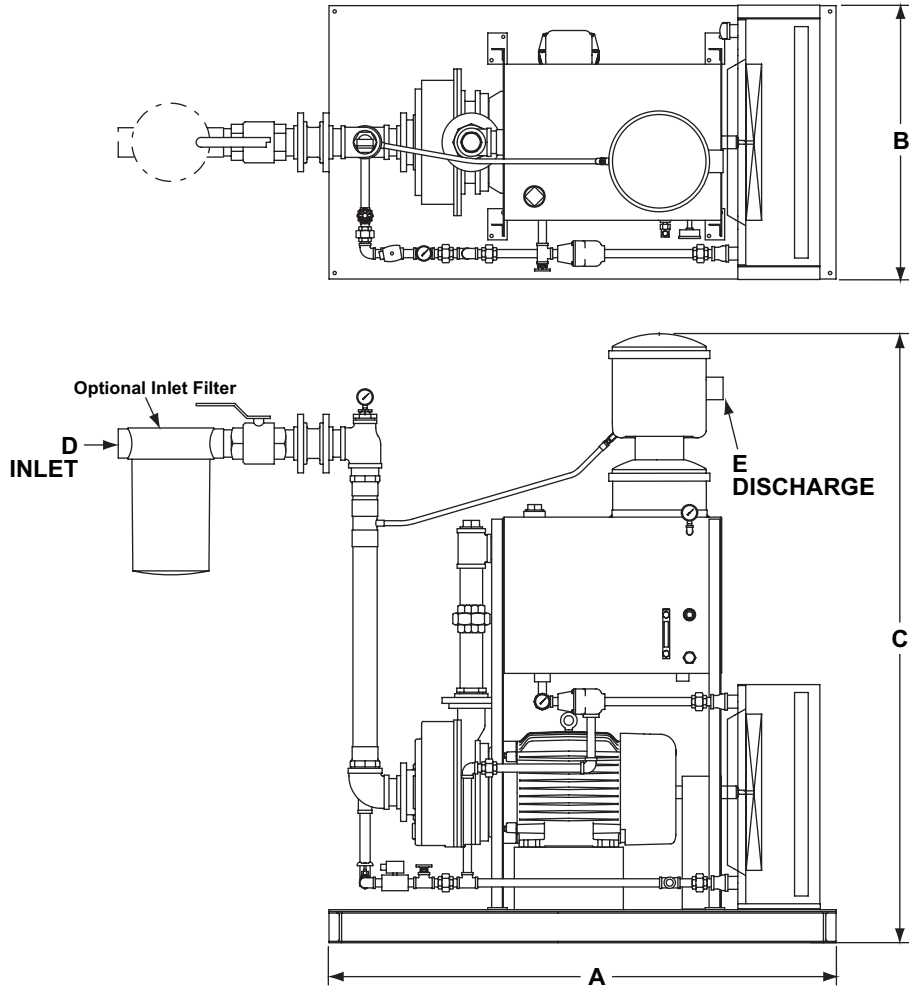
### Typical Pumping Speed Curves



## Dimensions

Values shown are approximate and should not be used for construction.  
 Certified drawings are available through your local Kinney Sales Professional.

## Models OSR-75, OSR-100, OSR-130



MODEL inches / mm	A	B	C	D Inlet	E Discharge	Weight (lbs. / kg)
OSR-75	52 / 1321	29 / 737	58 / 1473	2" NPT	2" NPT	700 / 320
OSR-100	52 / 1321	29 / 737	58 / 1473	2" NPT	2" NPT	750 / 340
OSR-130	52 / 1321	29 / 737	58 / 1473	2" NPT	2" NPT	850 / 390

## CONTACT US

For more information, contact your  
 Regional Sales Manager or call us at:

**1-800-825-6937**

Your Local Sales Professional: