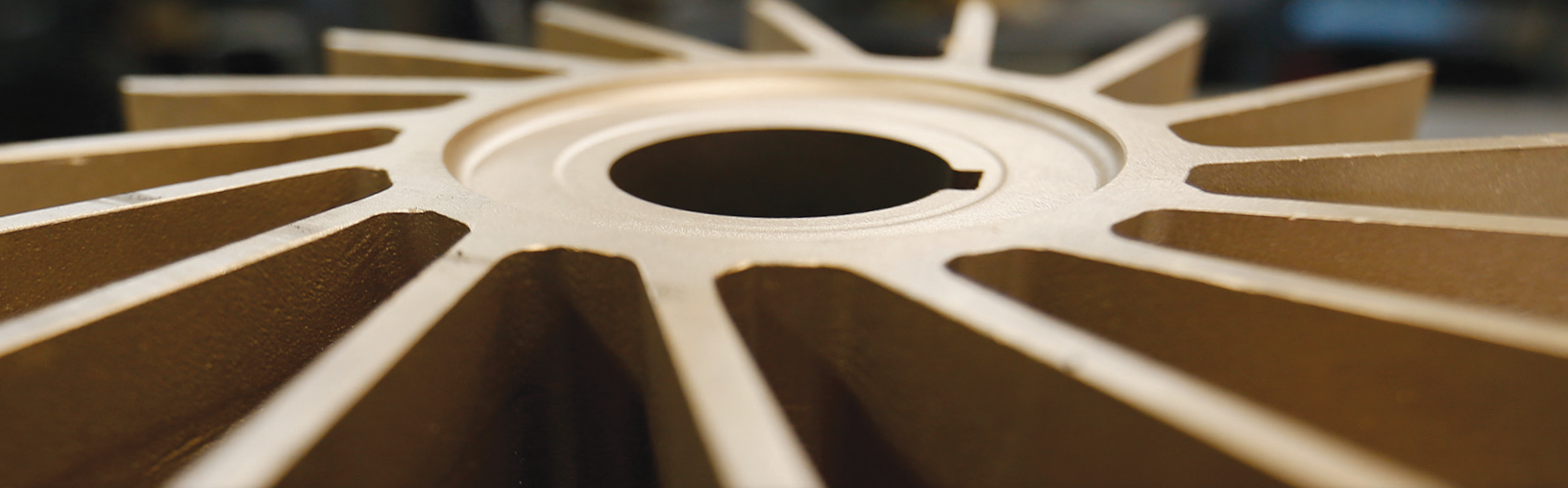


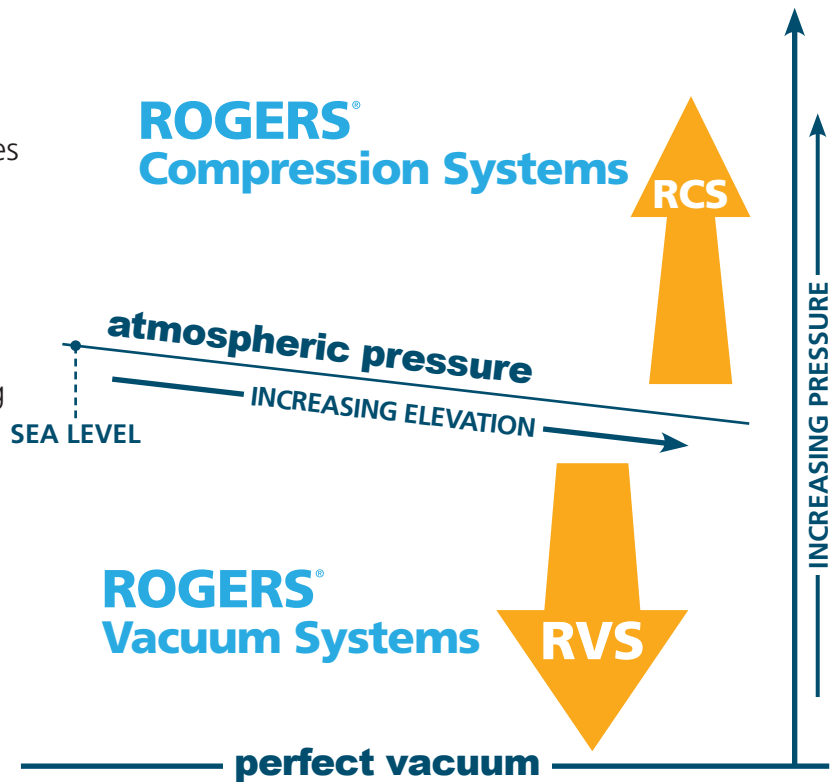
# ROGERS®

Custom Process Solutions



## Our Approach

- Custom designed and fabricated assemblies
- Full submittal documentation provided by in-house design engineering and automation staff
- Project Management services from scoping phase to commissioning
- Fully integrable custom controls systems built, wired and programmed in-house
- Solutions built to fit specific process and installation requirements
- Unequaled service and support



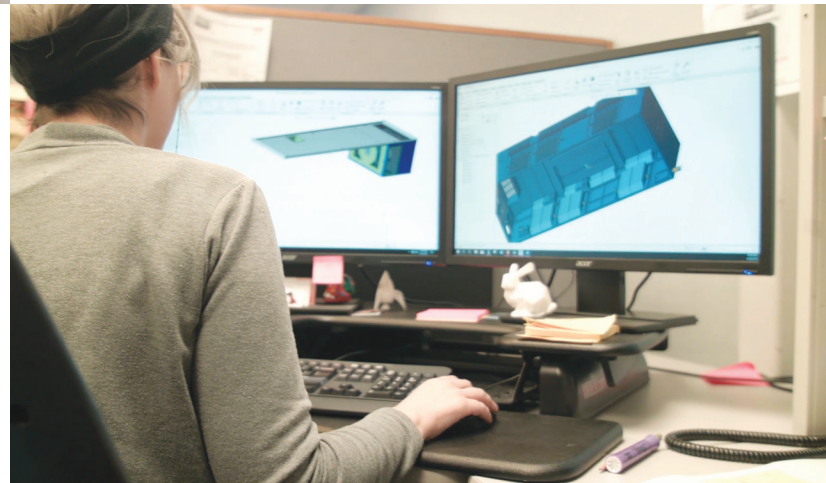
# ROGERS® Custom Process Solutions



Our high performance, durable compression and vacuum systems are used extensively in many industries. Operating consistently and reliably in the most demanding conditions, they help keep your plant running efficiently, 24/7.

## Application Support

Each custom solution is assigned to a Rogers Project Manager who takes it from concept to completion. Our application support engineers have the technical expertise and product knowledge to deliver unmatched support.



## Services

- Turn-key projects from scoping to commissioning
- Consultation on unique applications
- Education and training
- Custom controls integration
- Condensable vapors and precipitates handling

## Case Study: Vacuum Evaporator

### Background

Organic Valley bought an old creamery plant and was planning to replace and upgrade plant equipment, including the vacuum system, to increase efficiency.

### Project

Replace their antiquated vacuum pump with a duplex liquid ring vacuum pump that has automatic loading controls so that it runs based on actual demand.

### Results

- 32,000 kWhrs saved annually
- 16,000 gallons of water saved annually
- Decreased vacuum system footprint



## Rogers Compression Systems

- Process air & gas solutions
- Lubricant injected or oil-free
- Fixed or variable speed
- Air or water cooled
- 4-4000 PSIG

## RCS Technologies

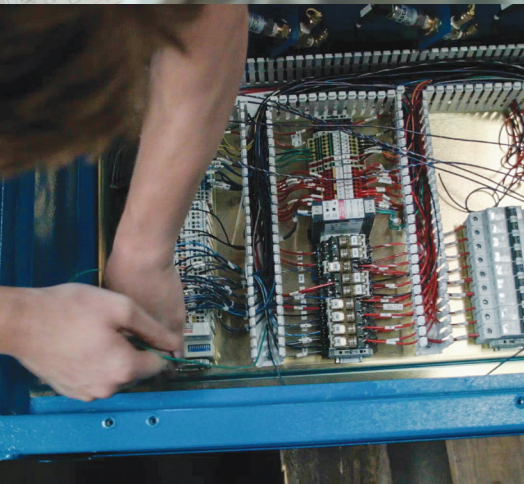
- Lubricated Screw
- Reciprocating Piston
- Multistage Turbine
- Rotary Lobe
- Dry Claw
- Liquid Ring
- Dry Screw

## Rogers Vacuum Systems

- Fixed or variable speed
- Housekeeping applications to 12" HgV
- Utility applications to 29.9" HgV
- Process applications to  $1 \times 10^{-4}$  Torr

## RVS Technologies

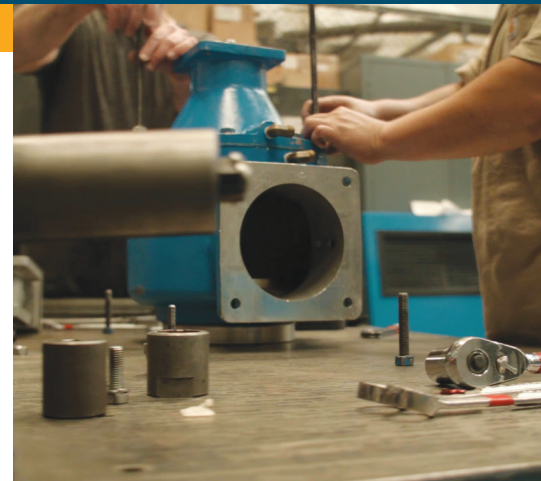
- Rotary Vane
- Lubricated Screw
- Multistage Turbine
- Rotary Lobe
- Dry Claw
- Liquid Ring
- Dry Screw
- Hybrid Boosted Vacuum Pump



## Controls

Control panels are built in a NRTL compliant shop to national and international standards, including CSA, UL and CE compliance.

The PLC based controls we use will integrate to your Industrial Control System. We work with SCADA, DCS, Ethernet, Modbus and much more. Our Automation Technology Group will commission your system to ensure that you get up and running correctly.







**ROGERS  
MACHINERY  
COMPANY, INC.**

*Since 1949*

[www.rogers-machinery.com](http://www.rogers-machinery.com)  
[sales@rogers-machinery.com](mailto:sales@rogers-machinery.com)



Portland Branch and Corporate Office - Portland, Oregon  
Offices and manufacturing powered in part by the sun.



Distributed by:

## **ROGERS® Custom Process Solutions**

ROGERS Machinery Company, Inc.

14650 S.W. 72nd Avenue

Portland, OR 97224

Phone: 503-639-0808

Fax: 503-639-0111

eMail: [info@rogers-machinery.com](mailto:info@rogers-machinery.com)

[www.rogers-machinery.com](http://www.rogers-machinery.com)



**ROGERS® family of EcoPak vacuum & compression systems**