

**SEEPEX.**  
ALL THINGS FLOW

# FOR HIGHER EFFICIENCY MINE DEWATERING UNIT



MIN

# IMPROVED MOBILITY.

The SEEPEX Mine Dewatering Unit is engineered for efficient separating of oversized solids and conveying of mine water. The compact design enables easy transport of the complete unit. Quick and effortless maintenance ensures reduced downtime and lower operating costs.

The unit consists of a skid baseplate, tank, pipework and pump with drive and controls. The compact footprint of the pump allows easy retrofit into existing dewatering units.

# MAINTAIN-IN-PLACE DESIGN

The pump, complete with suction and discharge pipework, can remain in place when changing the rotor and/or stator to minimize downtime.

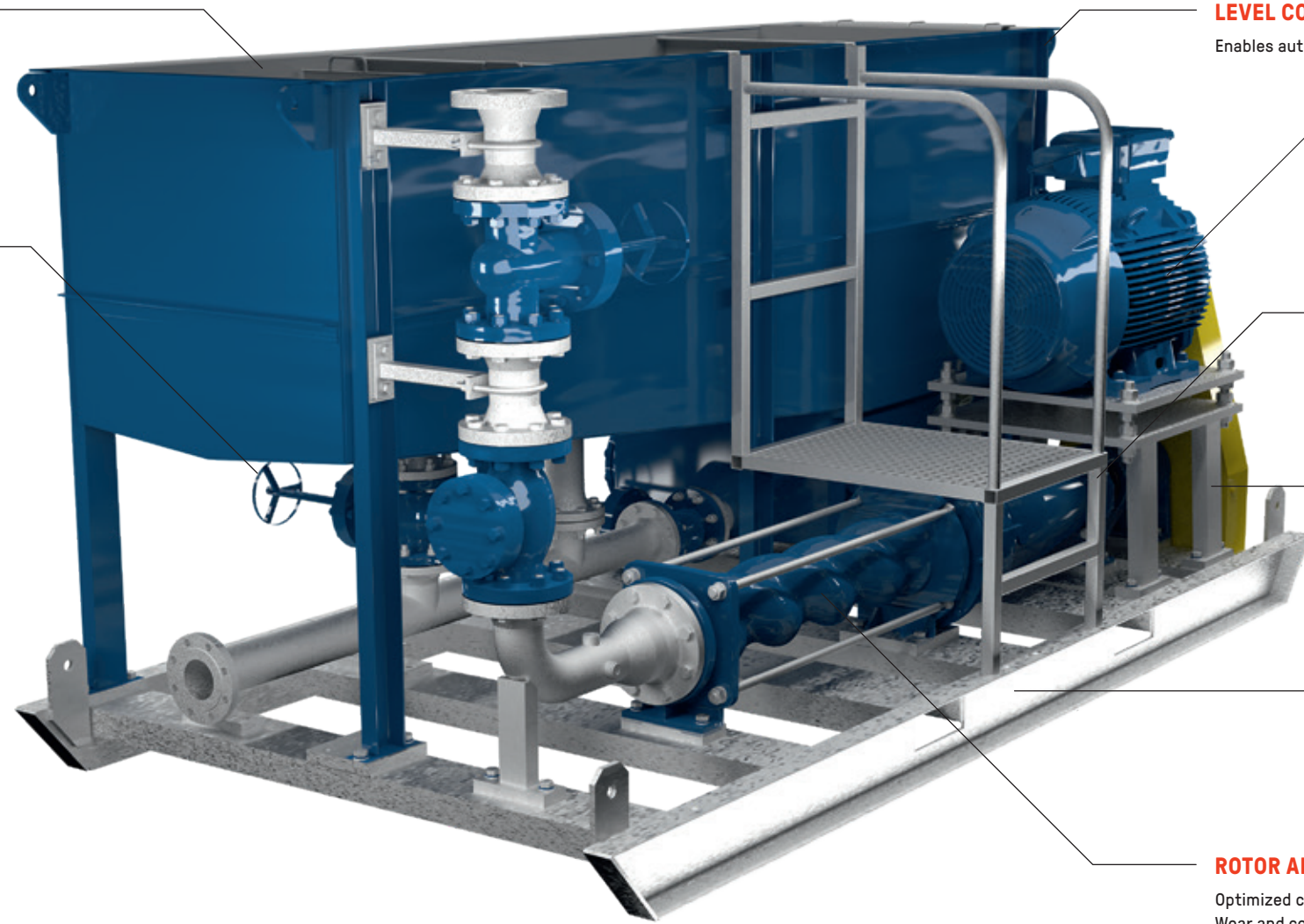
**SETTLING TANK**  
Configured to control solids and handle overflow. Standard capacity of 3,300 liters (727 gal.).

**DUMP VALVE MANIFOLD**  
Two outlets for sludge or solids removal.



**BELT GUARD**  
Two-piece lightweight design along with a perforated guard for visual control.

**BACKSTOP**  
Prevents pump running in reverse.



**LEVEL CONTROL**  
Enables automatic operation.

**DRIVE**  
According to the local mining specifications.

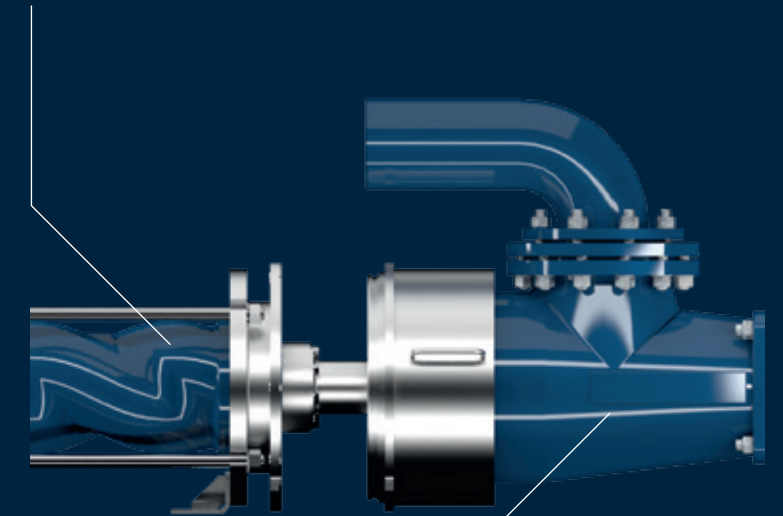
**LADDER**  
A light weight, maneuverable work platform.

**GALVANIZED STEEL FRAME**  
A protective coating on the skid and pipework to prevent rust.

**SKID BASEPLATE**  
Has a compact, bi-directional design and lifting lugs for simple transport.

**ROTOR AND STATOR**  
Optimized compression, length and size. Wear and corrosion resistant materials in a lightweight design.

**ROTOR AND STATOR**  
Easily accessible for quick maintenance.



**MAINTAIN-IN-PLACE PUMP**  
The sliding casing and quick release tie rods offer fast and easy maintenance without needing to remove the pump or pipework.



# APPLICATIONS

Used in both fixed and mobile installations, this SEEPEX solution confidently conveys erosive mine water for further clarification.

**SEEPEX GmbH**  
[www.seepeex.com](http://www.seepeex.com)

## **BENEFITS**

- Quick and easy maintenance
- Lightweight components
- Compact design
- Robust pumps for small spaces
- Quick access suction casing
- Lower operating costs
- Equal wall stators provide increased pressure capability
- No dismantling of pipework

## **KEY FACTS**

- Conveying capacity:  
72 m<sup>3</sup>/h (20 l/s, 317 USGPM)
- Pressure:  
up to 24 bar (350 psi)
- Discharge head:  
up to 240 m (787')