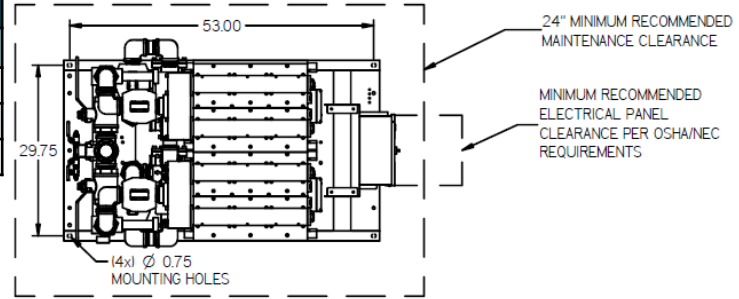
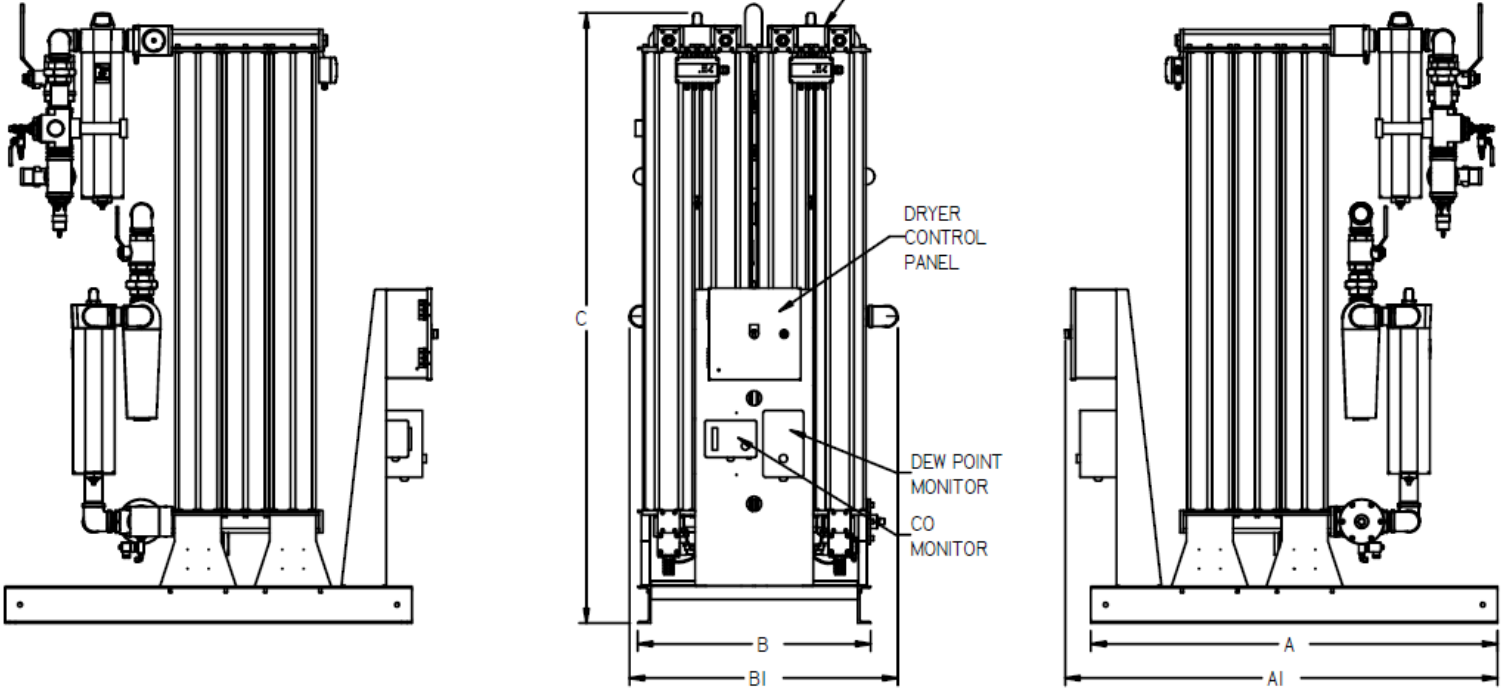


Dimensions							
Model	Dim A	Dim A1	Dim B	Dim B1	Dim C	Inlet	Outlet
MDD2508	55.0"	58.5"	31.5"	34.6"	82.4"	1 ½"	2"
MDD3008	55.0"	58.5"	31.5"	34.6"	70.2"	1 ½"	2"
MDD3758	55.0"	58.5"	31.5"	36.3"	83.7"	2"	2 ½"



12x) DESICCANT DRYERS W/WATER SEPARATORS, PRE-FILTERS, AFTER FILTERS, REGULATORS W/GAUGES, SAFETY VALVES, AND ISOLATION BALL VALVES. (CARBON FILTERS ARE OPTIONAL)



Medical Desiccant Dryer Package				
Model	SCFM @ 100 PSIG	Voltage ¹		Unit Weight (lbs) ²
MDD2508	250	115V	208-230V	1390
MDD3008	300	115V	208-230V	1439
MDD3758	375	115V	208-230V	1622

Note: Dryer Sizing - SCFM listed is for each dryer. Powerex Medical Dryer Systems provide 100% backup. When selecting the proper Medical Dryer System, match the listed SCFM with the SCFM of the compressor(s) in operation with one compressor in reserve per NFPA 99.

Includes: filter package, CO monitor, and Dew point monitor.

1 – Dryer available in either 115V or 208-230V. Please specify voltage when ordering.

2 – Unit weights are approximate. Actual weights may vary.