

K Series

Air Compressor and Vacuum Pump

PRODUCT GUIDE

- Fixed or Variable Speed
- Lubricant-Injected
- Single- or Two-Stage
- Open or Cabinet Enclosed
- 10-600 HP Air or Water Cooled
- 40-210 PSIG
- ◆ Vacuum Pumps 15-250 HP ◆ 29.9" HgV



ROGERS® K Series family of compressors and vacuum pumps



The Company

From our founding in 1949, **ROGERS®** Machinery Co. has designed, built and serviced compressed air systems and other plant utility equipment.

ROGERS® builds the **K Series**, oil-lubricated compressors, in Centralia, WA and our KNW, oil-free compressors, in Portland, OR. In addition, we provide 24/7 sales, parts and service support to our branch offices and distributor partners while maintaining an extensive inventory of parts for service and repair.

INNOVATIVE

The **ROGERS® K Series** compressors represent a complement of features designed to provide “best in class” performance. These features include advanced inlet filtration and low-pressure loss inlet valves, efficient 5:6 rotor profiles, low lubricant carry-over separation,

high-capacity coolers and highly effective moisture removal all add up to give you the most effective and efficient compressor you can install today.

SYSTEMS

The **ROGERS® K Series** open and enclosed compressors and vacuum pumps allow for easy access to monitor, maintain and repair the assembly. Periodic maintenance such as filter and lubricant changes are made easy. Energy saving, high reliability and low total cost of ownership are fundamental design features of the machines. Our representatives will help you select the right compressed air treatment and storage equipment with a systems approach that ensures you have the correct air quality, pressure and air flow to your plant.

“Quality products that are really built to last. You can tell this company takes pride in what they do.”

Customer Review
- 2020



ROGERS® K Series

PERFORMANCE

MODEL	HORSEPOWER RANGE	FLOW RANGE (ACFM)	*PRESSURE RANGE (PSIG)	DESCRIPTION
K Series	40-350	190-1,453	40-210	<ul style="list-style-type: none"> • OPEN PACKAGE • DIRECT DRIVEN @ 1,800 RPM
KV Series	50-350	50 -1,604	40-210	<ul style="list-style-type: none"> • OPEN PACKAGE • VFD CONTROLLED • DIRECT DRIVEN AT~ 900 TO 3900 RPM
K2 Series	100-600	576-3,000	80-210	<ul style="list-style-type: none"> • OPEN PACKAGE • TWO STAGE • DIRECT DRIVEN @ 1,800 RPM
K2V Series	100-600	160-2,621	80-210	<ul style="list-style-type: none"> • OPEN PACKAGE • TWO STAGE • VFD DRIVEN BETWEEN ~600 TO ~1800 RPM
KR Series	25-350	115-1,453	40-200	<ul style="list-style-type: none"> • CABINET ENCLOSED, QUIET • SINGLE STAGE • DIRECT DRIVEN @ 1800 RPM (3600 RPM 60 HP AND BELOW)
KRV Series	25-350	45-1,542	40-200	<ul style="list-style-type: none"> • CABINET ENCLOSED, QUIET • SINGLE STAGE • VFD CONTROLLED • DIRECT DRIVEN @ ~900 TO 4000 RPM
KR2 Series	125-500	576-2,621	80-200	<ul style="list-style-type: none"> • CABINET ENCLOSED, QUIET • TWO STAGE DIRECT DRIVEN @1,800 RPM
KR2V Series	125-500	160-2,483	80-200	<ul style="list-style-type: none"> • CABINET ENCLOSED, QUIET • TWO STAGE • VFD DRIVEN BETWEEN ~600 TO ~1800 RPM
KI Series	10-100	35-460	10-50 (BELT DRIVEN) 60-100 (DIRECT DRIVEN)	<ul style="list-style-type: none"> • CABINET ENCLOSED • FIXED SPEED BELT DRIVE 50 HP & BELOW • DIRECT DRIVE >60 HP
KIV Series	10-100	11-479	10-50 (BELT DRIVEN) 60-100 DIRECT DRIVEN	<ul style="list-style-type: none"> • CABINET ENCLOSED • VARIABLE SPEED • BELT DRIVE 50 HP AND BELOW • DIRECT DRIVE > 60 HP
KRVP Series	15-250	206-3,870	DOWN TO 29.9" HgV	<ul style="list-style-type: none"> • VACUUM PUMP • ROTARY SCREW • QUIET CABINET ENCLOSED DIRECT DRIVEN @ 3,600 RPM

K and KV

AIR COMPRESSORS

- ▶ **Single Stage**
- ▶ **Direct Driven**
- ▶ **Open Frame**

MODEL	HP RANGE	FLOW (ACFM)	*PRESSURE (PSIG)	DESCRIPTION
K SERIES	40-350	190-1,453	40-210	<ul style="list-style-type: none"> • OPEN PACKAGE • DIRECT DRIVEN @1,800 RPM
KV SERIES	50-350	50-1,604	40-210	<ul style="list-style-type: none"> • OPEN PACKAGE • VFD CONTROLLED • DIRECT DRIVEN @ ~ 900 to 3900 RPM



STARTER PANEL

K Model: X-Line, Wye-delta and solid-state starter options.

KV Model: Variable speed drive standard.

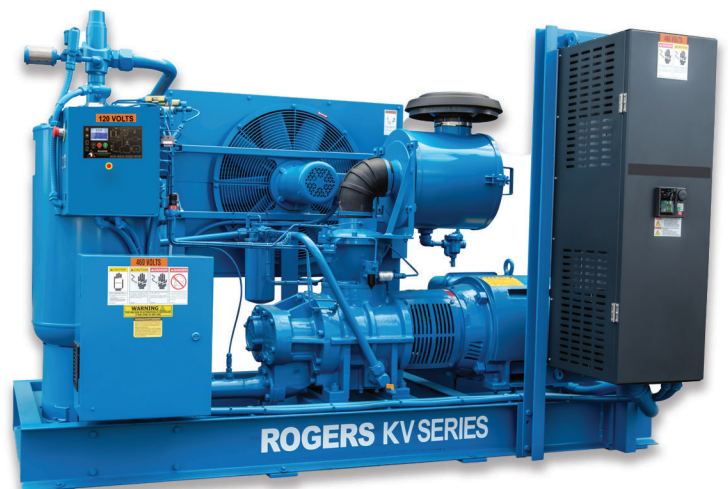
AIR/LUBRICANT SEPARATOR

Two nested separator elements with integral scavenging lines provide excellent separation in the most challenging environments.

OVERSIZED HEAT EXCHANGERS, MOISTURE SEPARATOR AND AUTO DRAIN

Cools lubricant and air while removing up to 80% of moisture from air stream. Optional VFD fan control available to minimize power consumption while improving cooler longevity and reducing noise.

Standard horizontal orientation for air flow with optional vertical or remote coolers. Water-cooled also available.



rogers-machinery.com

KR and KRV

AIR COMPRESSORS

- ▶ **Single Stage**
- ▶ **Direct Driven**
- ▶ **Enclosed**

MODEL	HP RANGE	FLOW (ACFM)	*PRESSURE (PSIG)	DESCRIPTION
KR SERIES	25-350	115-1,453	40-200	<ul style="list-style-type: none"> • CABINET ENCLOSED, QUIET • SINGLE STAGE • DIRECT DRIVEN @ 1800 RPM (3600 RPM 60 HP AND BELOW)
KRV SERIES	25-350	45-1,542	40-200	<ul style="list-style-type: none"> • CABINET ENCLOSED, QUIET • SINGLE STAGE • VFD CONTROLLED • DIRECT DRIVEN @ ~ 900 TO 4000 RPM

AIREND

Designed and built for high performance and longevity with a NEMA motor flange for ease of service and alignment.

INLET CONTROL VALVE

Rugged design for reliable capacity control.

AIR/LUBRICANT SEPARATOR

High efficiency, reliable, multi-stage separation.



COMPRESSOR CONTROL

Status indicators with easy-to-read interface including percent capacity display. MODBUS remote communication is standard.

DRIVE MOTOR

Standard, high efficiency, C-flange, ODP, NEMA frame motors. TEFC motors are available on fixed speed models.

K2 and K2V

AIR COMPRESSORS

- ▶ *Two-Stage*
- ▶ *Direct Driven*
- ▶ *Open Frame*

MODEL	HP RANGE	FLOW (ACFM)	*PRESSURE (PSIG)	DESCRIPTION
K2 SERIES	100-600	576-3,000	80-210	<ul style="list-style-type: none"> • OPEN PACKAGE • TWO STAGE • DIRECT DRIVEN @ 1,800 RPM
K2V SERIES	100-600	160-2,621	80-210	<ul style="list-style-type: none"> • OPEN PACKAGE • TWO STAGE • VFD DRIVEN BETWEEN ~ 600 TO RPM ~ 1800 RPM



TWO-STAGE AIREND

Driven through helical gears, designed and built for performance, premium efficiency and longevity.

OVERSIZED HEAT EXCHANGERS, MOISTURE SEPARATOR AND AUTO DRAIN

Cools lubricant and air while removing up to 80% of moisture from air stream. VFD fan control is standard and reduces power consumption while increasing cooler life.

STARTER PANEL

Solid-state, reduced voltage starting standard on fixed speed with variable speed drives available as well.

LUBRICANT FILTER(S)

Spin-on, full-flow, 12- μ , high-efficiency element(s).



crafts • man • ship |'kraf(t) smen, SHip|
1. Enjoining the quality of design and personal talent; artistry.

rogers-machinery.com

KR2 and KR2V

AIR COMPRESSORS

- ▶ *Two-Stage*
- ▶ *Direct Driven*
- ▶ *Enclosed*

MODEL	HP RANGE	FLOW (ACFM)	*PRESSURE (PSIG)	DESCRIPTION
KR2 SERIES	125-500	576-2,621	40-200	<ul style="list-style-type: none"> • CABINET ENCLOSED, QUIET • TWO STAGE DIRECT DRIVEN @ 1,800 RPM
K2V SERIES	125-500	160-2,483	40-200	<ul style="list-style-type: none"> • CABINET ENCLOSED, QUIET • TWO STAGE • VFD DRIVEN @ ~600 TO~1800 RPM

SOUND ENCLOSURE

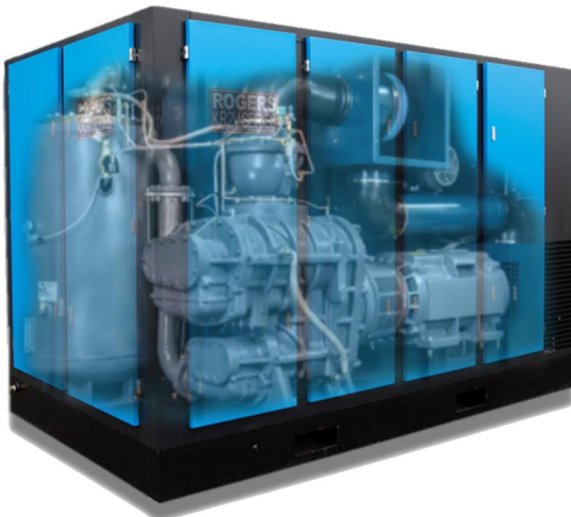
Heavy-duty, powder coated, steel construction for applications where quiet operation is required. Doors and panels are removable for ease of maintenance.

INLET FILTER/SILENCER

Multi-stage, low pressure drop elements.

AIR/LUBRICANT SEPARATOR

High efficiency, reliable, multi-stage separation.



COMPRESSOR CONTROL

Status indicators with easy-to-read interface including percent capacity display. MODBUS remote communication is standard.

DRIVE MOTOR

Standard, high efficiency, C-flange, ODP, NEMA frame motors. TEFC motors are available.

KI and KIV

AIR COMPRESSORS

- ▶ **Single Stage**
- ▶ **Belt and Direct Driven**
- ▶ **Enclosed**

MODEL	HP RANGE	FLOW (ACFM)	*PRESSURE (PSIG)	DESCRIPTION
KI SERIES	10-100	35-460	10-50 HP: 100-200 PSIG 60-100 HP: 100-125 PSIG *Maximum pressure varies by model	<ul style="list-style-type: none"> • CABINET ENCLOSED • FIXED SPEED • BELT DRIVEN 50 HP AND BELOW • DIRECT DRIVEN > 50 HP
KIV SERIES	10-100	11-479	10-50 HP: 100-175 PSIG 60-100 HP: 100-150 PSIG *Maximum pressure varies by model	<ul style="list-style-type: none"> • CABINET ENCLOSED • VARIABLE SPEED • BELT DRIVEN 50 HP AND BELOW • DIRECT DRIVEN > 50 HP



MOTOR

Energy efficient, NEMA frame main motors.

AIREND

Designed and built to last. Energy efficient rotor profile.

INLET CONTROL VALVE

Engineered for reliable, efficient capacity control with load/ unload on all units and load/ unload/modulation on 60-100 HP.

HEAT EXCHANGERS

Cool lubricant and compressed air.

AIR/LUBRICANT SEPARATOR

High efficiency, reliable separation.

CONTROLLER

Unit control and system status at your fingertips.

rogers-machinery.com

TANK MOUNTED

AIR COMPRESSORS

▶ **120 or 200 Gal. Tank**

▶ **Coalescing Filter**

▶ **Refrigerated Dryer**



EASY INSTALLATION

The compact size of the integrated tank and dryer reduces floor space requirements, and the pre-installed piping saves on installation costs.

FILTER

Integrated, high efficiency, Parker Finite coalescing filter (not shown) removes residual compressor oil before reaching the dryer and downstream components.

DRYER

Mounted, refrigerated dryer to reduce water in the compressed air system. Most KIV units are paired with a cycling dryer to provide maximum energy efficiency paired with the variable speed drive compressor.

ALUMINUM PIPING

Aluminum piping eliminates the need to replace hoses and gives you the longest lasting installation possible.

TANK

120 or 200 gallon, 200 psi rated tank with drain, pressure gage and pressure relief valve.

KRVP

VACUUM PUMPS

- ▶ *Rotary Screw Vacuum Pumps*
- ▶ *Direct Driven*
- ▶ *Enclosed*

MODEL	HP RANGE	FLOW (ACFM)	HgV	DESCRIPTION
KRVP SERIES	15-250 (Except 25 and 40)	206-3870	29.9" HgV	<ul style="list-style-type: none">• VACUUM PUMP• ROTARY SCREW• QUIET CABINET ENCLOSED• DIRECT DRIVEN @ 3,600 RPM



vGOAT CONTROL PANEL

Microprocessor control panel includes scheduling, sequencing and 'auto-restart after power failure' features. Optional PLC controls available with a high-resolution touch screen panel.

AIREND

Designed and built for high performance and longevity. Direct driven with no gears at a maximum speed of 3,600 RPM.

INLET FILTER/SILENCER

Low pressure drop, high-capacity design. Easy access for element change.

HEAVY-DUTY HEAT EXCHANGER

Air or water-cooled lubricant cooler available. Air-cooled units provided with standard VFD controlled fans to optimize temperature control and reduce power consumption.

MOTOR

NEMA frame, high efficiency, C-face, ODP motor. TEFC and inverter duty available.

DURABLE SOUND ENCLOSURE

Provides for quiet operation. Powder coated frame and removable panels provide easy access for maintenance.

ROGERS® K-Series Industry Usage

Industry Leading Compressor and Vacuum Pumps

Our high-performance, durable compressed air systems are used extensively in many industries. Operating consistently and reliably in demanding conditions, they help keep your plants running efficiently, 24/7.



Wood Products: Lumber, plywood, flooring, and mill work production.

Metals: Used in smelters, foundries, forges, rebar manufacturing, and machine shop operations.

Wastewater and Water Treatment: Used for pumping, mixing, valve positioning, and aeration applications.

Glass and Plastics: Utilized in forming, blowing and finishing, sandblasting, etching, and vacuum lifting.

Beverages: Used by bottlers, brewers, vintners, distillers, juice, and tea producers.

Food Processing and Packaging: Usages include transferring liquid and granular products, cleaning, spraying, filling, etc. The list is nearly endless.



Unequaled Commitment to Service and Support

Service and Repair

When you have critical industrial equipment in need of repair, you need 24/7 availability. So, whether you're in need of industrial air compressor repair, industrial vacuum pump repair, or industrial blower repair, we are always ready when you need us.



Parts

We want to keep your business running smoothly and on time, that's why you can call us whenever you need air compressor parts, parts for pumps, blowers, and vacuum systems. We will have someone available to take your call, search our inventory and find just the part you are looking for.





ROGERS®

Serving the United States and
International Markets With
Compressed Air, Blowers,
Pumps and Vacuum Solutions
Since 1949



Centralia Branch Office, Production and Warehouse Facilities
Centralia, WA

K Series

ROGERS Machinery Company, Inc

3509 Galvin Rd. Centralia, WA 98331

Phone: 360.736.9356

rogers-machinery.com



ROGERS® K Series family of compressors and vacuum pumps



ROGERS® K Series is designed
and built in the USA.



rogers-machinery.com



Please recycle after using.