



PATRICK CAIN DESIGNS

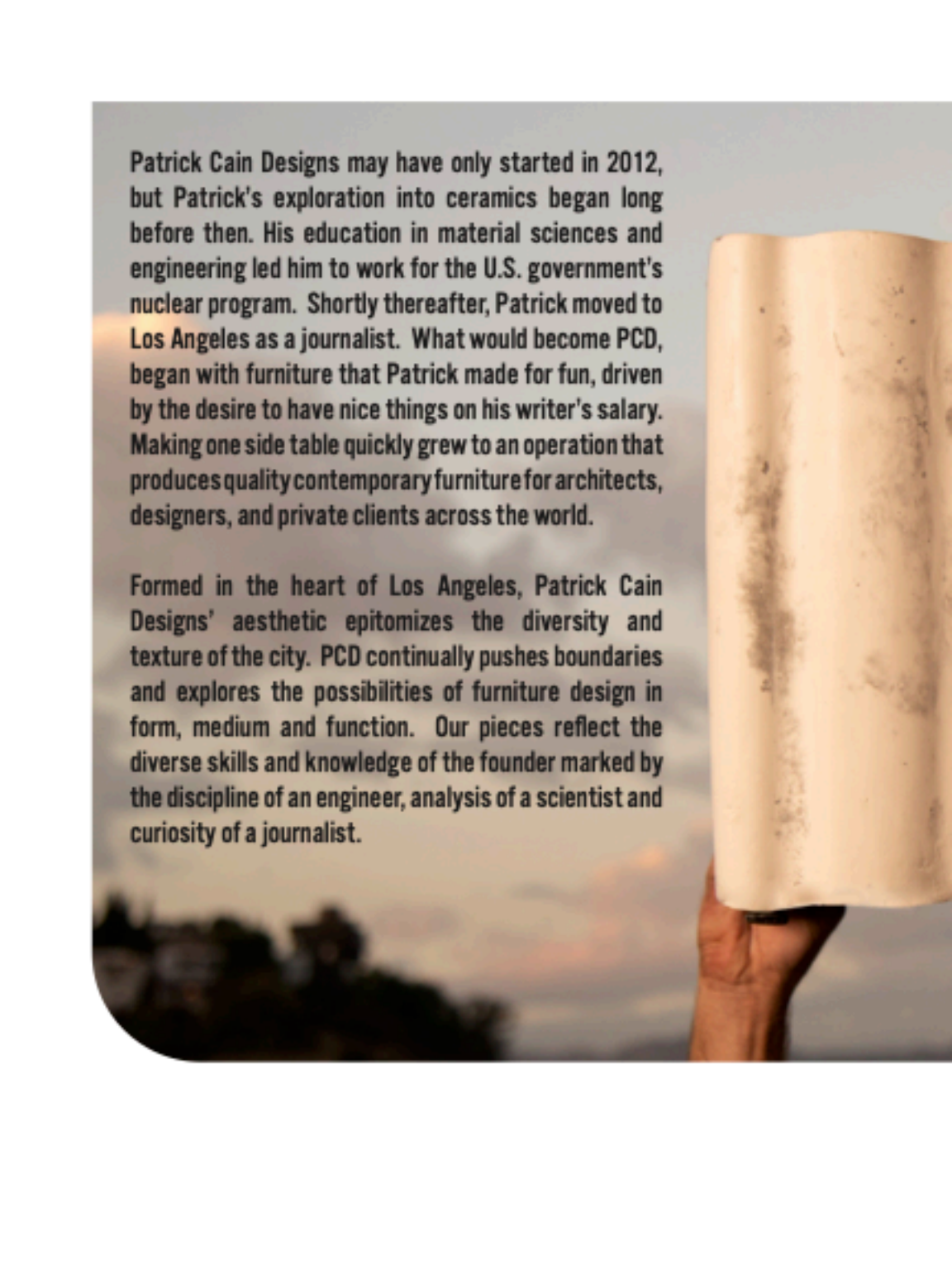
Made in Los Angeles





PATRICK CAIN DESIGNS

Made in Los Angeles

A hand is shown holding a large, rolled-up scroll of aged, yellowish paper. The scroll is partially unrolled, showing some dark, smudged marks on its surface. The background is a soft, out-of-focus sunset or sunrise sky with warm orange and yellow tones. The overall composition is vertical and artistic, suggesting a theme of history, design, or a long journey.

Patrick Cain Designs may have only started in 2012, but Patrick's exploration into ceramics began long before then. His education in material sciences and engineering led him to work for the U.S. government's nuclear program. Shortly thereafter, Patrick moved to Los Angeles as a journalist. What would become PCD, began with furniture that Patrick made for fun, driven by the desire to have nice things on his writer's salary. Making one side table quickly grew to an operation that produces quality contemporary furniture for architects, designers, and private clients across the world.

Formed in the heart of Los Angeles, Patrick Cain Designs' aesthetic epitomizes the diversity and texture of the city. PCD continually pushes boundaries and explores the possibilities of furniture design in form, medium and function. Our pieces reflect the diverse skills and knowledge of the founder marked by the discipline of an engineer, analysis of a scientist and curiosity of a journalist.







— MANZA





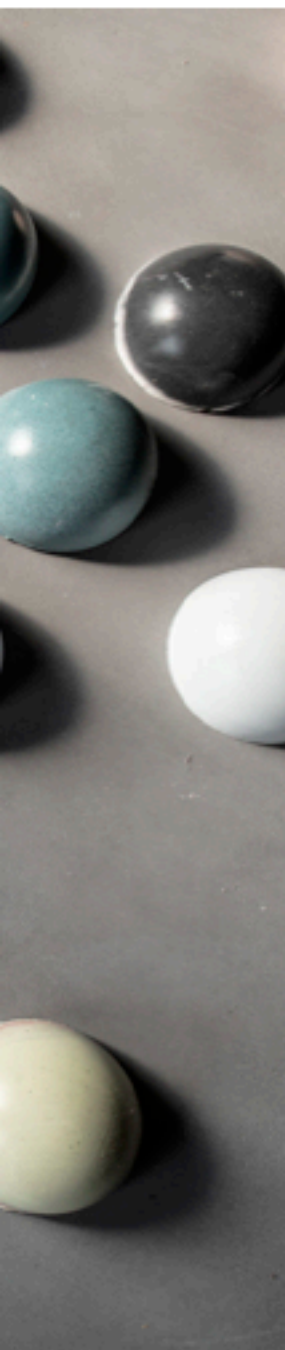




PLINTH



___COLOR



Color is one of the best ways to communicate our individuality. PCD empowers our designers and clientele to make each piece their own. While our line carries a score of preset colors, we offer custom color solutions. We have the capability to use the Pantone Color Matchb to deliver exactly what you need. We can send you swatches so you can see and feel our products. Please note that all our products are handmade, so colors can vary slightly from batch to batch.





____HOME GOODS





___HILICUS

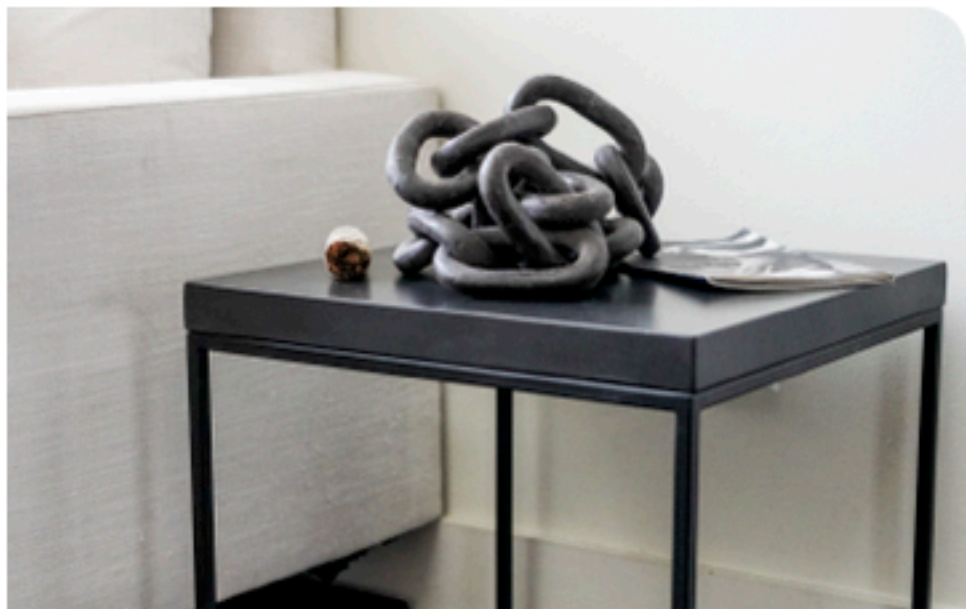








OAKLAND



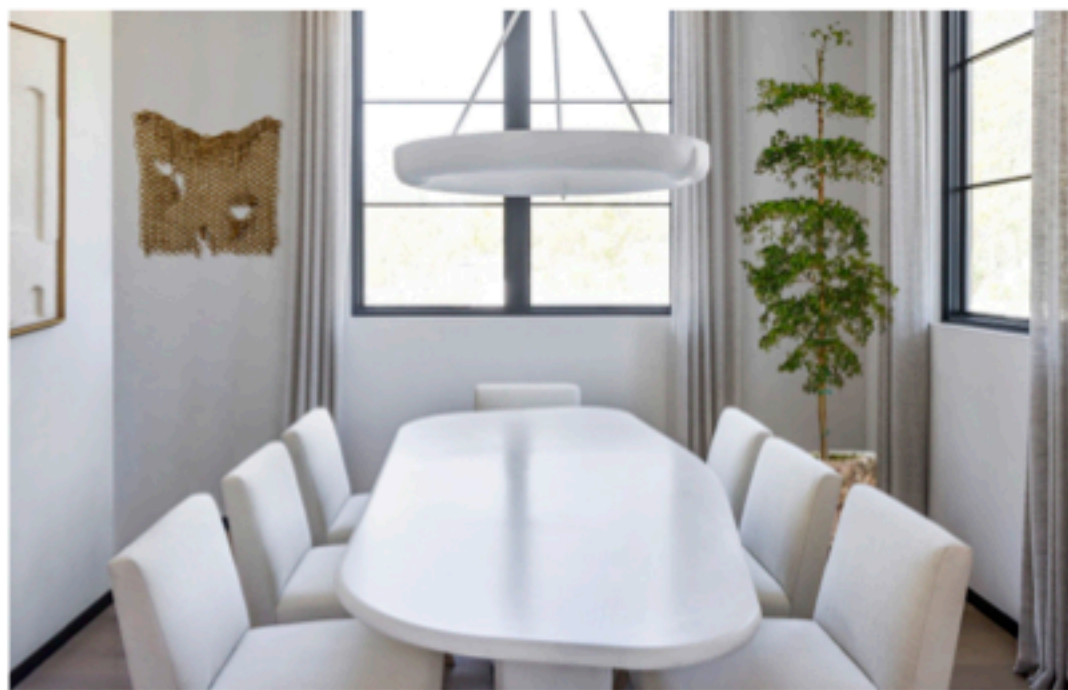
____MANUFACTURING

Our collection reflects our commitment to our community, collaborating with local artists and suppliers. We take pride in making everything locally with our team, who comes from diverse cultural backgrounds and across the gender spectrum.

Today, that means more than ever. We, as a nation, saw nothing is safe from global or domestic chaos. The ability to make our products in-house is key for weathering trade wars, discord, and even a pandemic.







 ARROWHEAD





GRAMERCY









— VAUGHN









___FRISCO









__SCUTOID





SCIENCE

PCD didn't berth from art school, design classes or even an architectural pedigree; its origin lies in the hard sciences. From Patrick's intimate understanding of the how the molecular level influences our macro existence, each piece is thought of, well... differently. The marriage of science and design is well seen in the Scutoid - a shape scientists discovered in 2018 as a way our skin cells morph and pack together. Or as Patrick saw it: a way for side tables to come together and be a coffee table.





ROSS









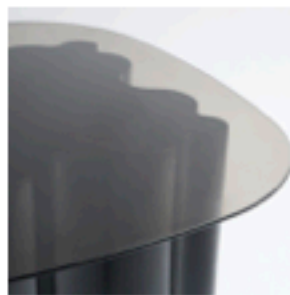
CLOUD



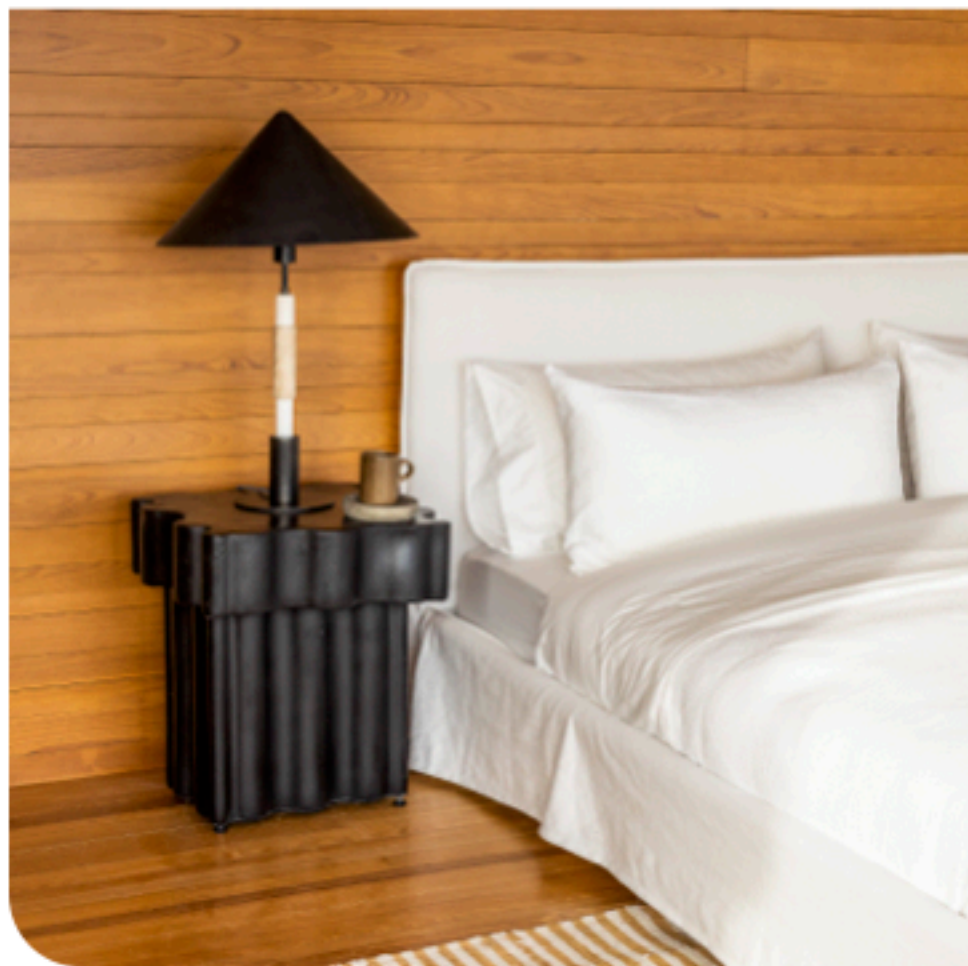
___THE PROCESS

At PCD, we consistently push the technological and functional properties of our medium – whether it is concrete, or the polymers we use to make molds. Patrick's understanding of the materials on a macro and atomic level, gives the shop a scientific advantage. We construct our pieces to be resilient, weathering the busiest and toughest environments. We develop techniques unique to PCD that uses integral pigments to sustain color in any condition and fiberglass to strengthen our products. For us, innovative design goes hand in hand with sustainability. We are constantly looking for ways to create processes that are environmentally responsible such as our use of post-consumer recycled Styrofoam to lighten our monolithic concrete pieces.











Best known for concrete that is softer in color and aesthetic, PCD's expansion into the rest of the home provides more lightweight options. These upholstered versions are counter-balanced foam wrapped in bouclé, felt or wool. So if you love the design, but need an ottoman or something friendlier to a toddler, these variants give the best of both worlds. COM available.



___SOFTNESS





SWATCHES



PANTONE 282 C



MIDNIGHT BLUE



BABY BLUE



JR BLUE



BLEACH NIGHTCAP



CORAL



BLEACHED PINK



BUTTERCREAM



PANTONE 3435 C



MATCHA



OLIVE BRANCH



CREME



DOUBLE BLACK



BLACK



SLATE



CITY GREY



WHITE

This is a small sampling of our color options. We can Pantone Color Match.

____NOTES

____NOTES



PATRICK CAIN DESIGNS

Made in Los Angeles