

Materials Required: -1-1/2 yards of Yak -3 yards flannel

Care instructions: wash on cold, delicate cycle. Line dry. Because of these care instructions you don't have to prewash your flannel if you don't want to.

## How to rip fabric

Nip the spot where you want to start the tear with a pair of scissors. The cut should be about 1"-2" long.

With your hands on either side of the nip, rip the fabric.

- Tear the flannel in half so that you have two 44" (WOF - Width of Fabric) x 54" pieces.
- Lay the two flannel pieces out flat, right sides together. (Some flannel doesn't have a right and wrong side. If that's the case it doesn't matter.)
- Sew the two flannel pieces together along the selvage edge.
- Lay out the yak, right side up, on a large flat surface. A clean floor works great.
- Place the flannel on top of the yak, wrong side up, so the right sides are together.
- Line up the selvage edge of the flannel to the selvage edge of the yak and the top cut edge of the flannel to the top cut edge of the yak. (See Cutting Diagram on reverse.)
- Smooth out the flannel to eliminate the slack.
- Pin the three sides that are lined up.
- On the fourth side, at the edge of the yak, tear the excess flannel off.
- Finish pinning
- On one of the 4 sides, mark a 6" spot towards the center where you will turn the blanket inside out. Do not sew in this section.
- With a 1/2" seam allowance, sew all the way around the blanking leaving the 6" hole.

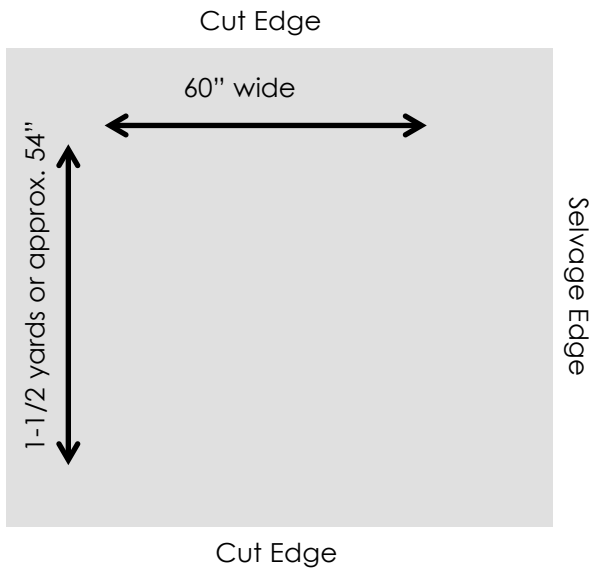
## Furry Yak!

Make sure you find the edge of the backing fabric on the Yak and not just the fur.

You may have to manually help the Yak through the sewing machine. Just don't push it through too fast. Try to keep with the speed of the machine.

- Turn the blanket right side out. Tuck the edges of the 6" opening in and pin in place.
- Top stitch all the way around. Pay close attention when topstitching over the 6" opening that you sew through both layers.

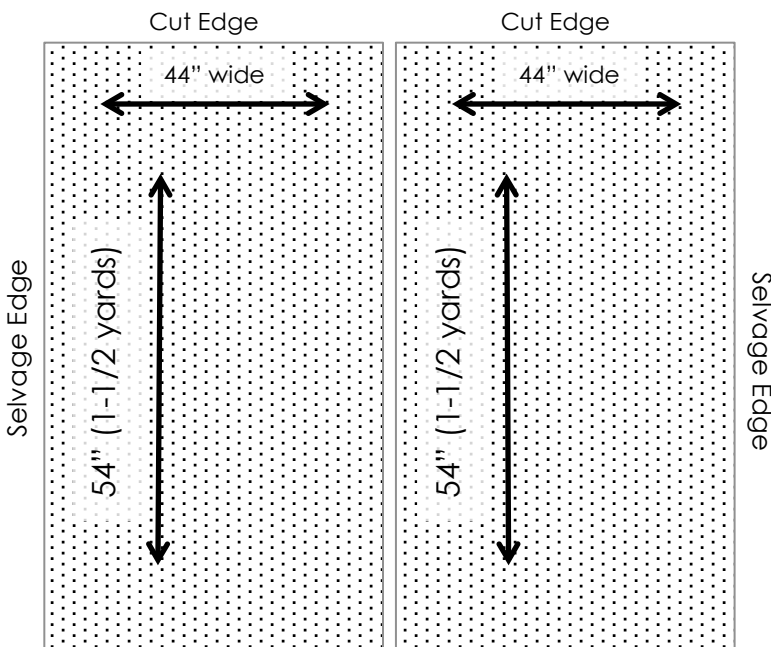
# CUTTING DIAGRAM



## YAK PRECUT

60" wide x 54" (1-1/2 yards) long

Because of the nature of this fabric, it is cut by hand, which may result in overage. Don't be worried if your yak precut is larger than this.



## Flannel

44" wide x 3 Yards

Cut in half to create (2) 44" wide x 54" (1-1/2 yards)

Sew these pieces together to create a piece of flannel that is roughly 88" x 54".

Layer the pieced flannel over the yak. Trim flannel as necessary. If the yak was overcut you may have excess yak at the bottom as well. Trim as needed so both pieces are the same size.

