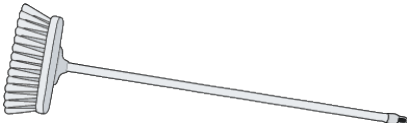


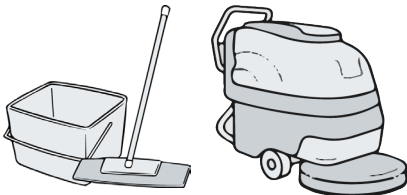
GARAGE FLOOR TILE COMPANY

GFTC Cleaning Guidelines

RECOMMENDED TOOLS



Broom



Mop & Bucket Rotary Scrubber

CLEANING CHEMICALS



Dr. Schutz Floor Care Kit

BEFORE YOU START

Failure to maintain flooring in accordance with recommended maintenance and cleaning procedures may affect the performance of the product and the product warranty.

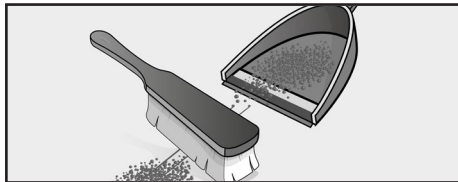
Remember, all floors scuff and scratch when sharp objects are dragged across them. Treat your floor tiles with the care you would other floor coverings.

Please ensure that you consult the health and safety data sheet for any cleaner, sealer or polish you intend to use. This will be available on the manufacturer's website. Failure to follow the manufacturer's instructions for the use of cleaners and sealers may affect their performance.

The Garage Floor Tile Company cannot be held responsible for problems arising from the use of cleaning products or floor finishes.

RECOMMENDED MANUAL CLEANING INSTRUCTIONS

Step 1: Sweep the floor to remove any dust, dirt or large debris.

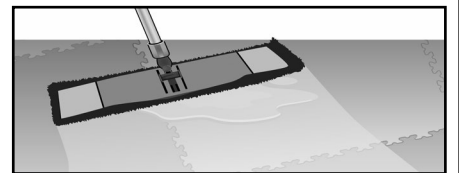


Step 2: Following the manufacturer's instructions, apply solution of Dr. Schutz Clean and Strip (degreaser) to the floor in correct dilution and leave for several minutes. The dilution rate may depend on how dirty the floor is - refer to the manufacturer's guidelines.

Step 3: Scrub the floor with a micro fibre mop or suitable cleaning pad (green or red). - refer to the manufacturer's cleaning guidelines for the cleaning product.



Step 4: Rinse the floor with clean water, removing the dirty water from the floor with a mop and allow to dry. Use a double bucket to ensure that the floor is rinsed well with clean water.



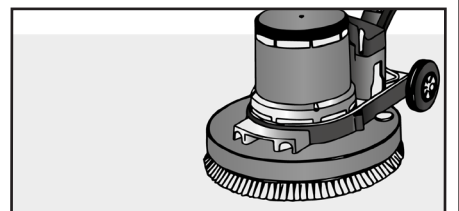
RECOMMENDED MECHANICAL CLEANING INSTRUCTIONS

Step 1: Sweep the floor to remove any dust, dirt or large debris.



Step 2: Following the manufacturer's instructions, apply solution of Dr. Schutz Clean and Strip (degreaser) to the floor in correct dilution and leave for several minutes. The dilution rate may depend on how dirty the floor is - refer to the manufacturer's guidelines.

Step 3: Mechanically scrub the floor using either a green or red pad at no more than 400rpm or use a soft bristle brush for cylindrical rotary scrubber dryers. Please refer to the machine manufacturer's guidelines and use the appropriate pad or brush for vinyl flooring.



Step 4: Dry the residue and then rinse the floor with warm, clean water and dry.

ROUTINE MAINTENANCE - KEEPING YOUR FLOOR CLEAN

Depending on whether you're cleaning manually or mechanically, follow the instructions above using Dr. Schutz Floor Mat or Floor Cleaner R1000.

Dr. Schutz Floor Mat Sealer is a natural floor polish that does not alter the appearance of the floor, but helps to prevent scratches, reduce marking and makes the floor easier to clean.

Simply dilute Dr. Schutz Floor Mat with water to a ratio of 1:200 (25ml to 5 litres of water) and damp mop the floor with the solution.

Regular polishing with Floor Cleaner R1000 increases the resistance of the Floor Mat protective coating especially in high traffic areas

All newly laid floors should be covered and protected from trade and construction work with a suitable non-staining protective covering.

To remove rubber heel marks by abrasion, use the correct machine pad or scrub by hand using baking soda, a white eraser or WD-40 ensuring that you rinse the floor well afterwards.

FLOOR POLISH & SEALERS - PROTECTION FROM SCRATCHES

All hard or resilient flooring will be prone to scratches if sharp or hard objects are dragged across them.

Applying Dr. Schutz Floor Mat Sealer to your floor after installation will extend its life and make it easier to clean and maintain. Some materials are known to cause staining on vinyl floors. Typical examples include asphalt and bitumen materials, rubber tyres, rubber-back carpets, rubber mats, rubber furniture rests, trolley wheels, shoe soles not made from non-staining materials and finally, heat degradation.

Simply mop the Floor Mat Sealer over your floor to add an extra protective layer.

When the first protective film is dry to walk on (after approximately 1 hour), apply a second coat and allow to dry for at least 12 hours before the floor is walked on, ideally overnight.

Coverage: 20m² per litre / per coat

Please note that applying a Dr. Schutz Floor Mat Sealer will not remove existing scratches and scuffs, but will reduce the chances of them occurring after it has been applied.

In the event that your floor is scratched we recommend buffing the scratched or scuffed area with a green scouring pad using a ph neutral floor cleaner to remove as much of the mark as possible. Then rinse the area you have cleaned with clean water and dry the floor.

PREVENTION OF STAINING FROM RUBBER TYRES, INKS & DYES

All hard or resilient flooring will be prone to staining from rubber tyres, chair casters, inks, and dyes.

This is caused by a chemical reaction between the antioxidant used in some rubbers.

To help protect the surface, apply two or three coats of Dr. Schutz Anticolor Sealer in accordance with the manufacturer's instructions.

INDENTATIONS

Occasionally, you may notice indentations after applying a lot of weight to our floor tiles over a small area (e.g. motorcycle stands and vehicle jacks).

Indentations occur more often when the floor is warm, as the tiles become softer and more flexible.

The tiles are designed to encourage movement when subject to heavy point loads. This is to prevent the tiles from breaking or snapping under pressure.

The tiles will always return to their normal form once the weight has been removed, so this is nothing to be concerned about.

They may take longer to reform in colder weathers, however the process can be sped up by using a hot air gun or by placing a damp cloth over the tile (ensuring that the cloth remains damp at all times) and running an iron over the cloth.

If you have any concerns about cleaning your floor, you can contact us here:
+44 (0)1582 310 705 or info@gftcompany.com

RECOMMENDED CLEANING & SEALING PRODUCTS

We recommend the following cleaners and sealers, other manufacturer's products may also be suitable.

- + Initial Clean or Heavy Duty Clean - **Dr. Schutz Clean & Strip**
- + General Day to Day Cleaning - **Floor Mat Sealer or Dr. Schutz R1000 Floor Cleaner**
- + Floor Preparation Prior to Sealing or Polishing - **Dr. Schutz Clean & Strip**
- + Stain Prevention & Protection - **PU Anticolor Sealer**