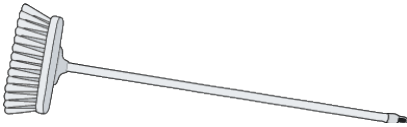


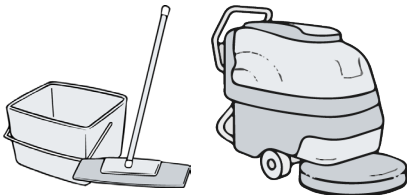
# GARAGE FLOOR TILE COMPANY

## GFTC Cleaning Guidelines

### RECOMMENDED TOOLS

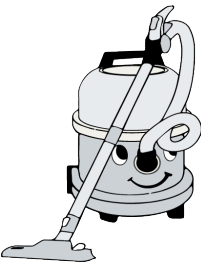


Broom

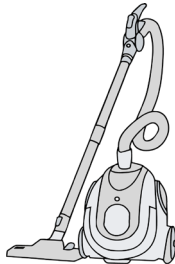


Mop & Bucket

Rotary Scrubber



Hoover



Wet Vac

### BEFORE YOU START

Failure to maintain flooring in accordance with recommended maintenance and cleaning procedures may affect the performance of the product and the product warranty.

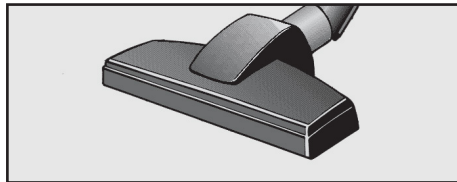
Remember, all floors scuff and scratch when sharp objects are dragged across them. Treat your floor tiles with the care you would other floor coverings.

Please ensure that you consult the health and safety data sheet for any cleaner, sealer or polish you intend to use. This will be available on the manufacturer's website. Failure to follow the manufacturer's instructions for the use of cleaners and sealers may affect their performance.

The Garage Floor Tile Company cannot be held responsible for problems arising from the use of cleaning products or floor finishes.

### RECOMMENDED MANUAL CLEANING INSTRUCTIONS

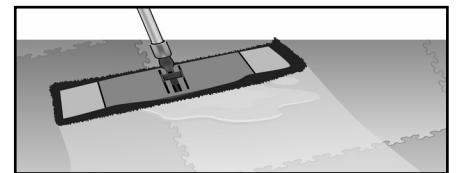
**Step 1:** Sweep or vacuum the floor to remove any dust, dirt or large debris.



**Step 2:** Following the manufacturer's instructions, apply solution of Heavy-Duty Degreaser to the floor in correct dilution and leave for several minutes. The dilution rate may depend on how dirty the floor is - refer to the manufacturer's guidelines.

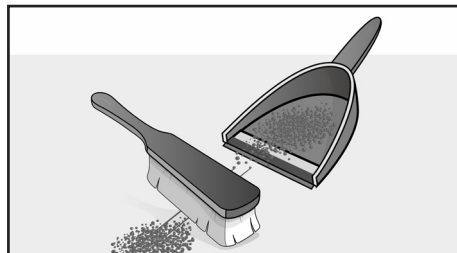
**Step 4:** Rinse the floor with clean water, removing the dirty water from the floor with a mop and allow to dry. Use a double bucket to ensure that the floor is rinsed well with clean water.

**Step 3:** Scrub the floor with a micro fibre mop or suitable cleaning pad (green or red). - refer to the manufacturer's cleaning guidelines for the cleaning product.



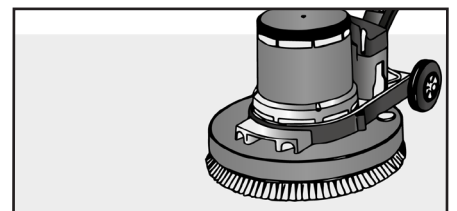
### RECOMMENDED MECHANICAL CLEANING INSTRUCTIONS

**Step 1:** Sweep the floor to remove any dust, dirt or large debris.



**Step 2:** Following the manufacturer's instructions, apply solution of Heavy-Duty Degreaser to the floor in correct dilution and leave for several minutes. The dilution rate may depend on how dirty the floor is - refer to the manufacturer's guidelines.

**Step 3:** Mechanically scrub the floor using either a green or red pad at no more than 400rpm or use a soft bristle brush for cylindrical rotary scrubber dryers. Please refer to the machine manufacturer's guidelines and use the appropriate pad or brush for vinyl flooring.



**Step 4:** Wet vacuum the residue and then rinse the floor with warm, clean water and vacuum dry.

## ROUTINE MAINTENANCE

Depending on whether you're cleaning manually or mechanically, follow the instructions above using the R1000 Floor Cleaner instead of the Heavy-Duty Degreaser.

Develop a regular cleaning program suited to the usage and traffic of the area. Heavy traffic or highly visible areas need to be cleaned more often than other areas which are seldom used or where appearance is less important.

The most effective method of cleaning our tiles is by rotary scrubber dryer. Care should be taken to select the correct pad. For example, medium pads, soft nylon or polypropylene brushes.

To remove rubber heel marks by abrasion, use the correct machine pad or scrub by hand using baking soda, a white eraser or WD-40 ensuring that you rinse the floor well afterwards.

All newly laid floors should be covered and protected from trade and construction work with a suitable non-staining protective covering.

Remember that dirty equipment, particularly mops, do not clean but merely redistribute the dirt.

## FLOOR POLISH & SEALERS

Applying a floor polish or sealer to your floor after installation will extend its life and make it easier to clean and maintain. Some materials are known to cause staining on vinyl floors. Typical examples include asphalt and bitumen materials, rubber tyres, rubber-back carpets, rubber mats, rubber furniture rests, trolley wheels, shoe soles not made from non-staining materials and finally, heat degradation.

We recommend two sealers depending on the level of protection required. The PU sealer is a general purpose sealer and the anti-colour sealer will protect your floor from staining from rubber tyres, dyes or inks. Please note that the anti-colour sealer is only effective prior to any staining occurring.

Prior to the application of the sealer, prepare the floor following the polish or sealer manufacturer's instructions and guidelines.

Apply two or three thin coats of polish or sealer in accordance with the manufacturer's instructions. Make sure you follow each step correctly including drying times between coats.

## STATIC PREVENTION

Occasionally customers experience a higher level of static after installing our floor tiles. This will be the result of individual environmental factors such as the substrate, activity in the area, electronic equipment, temperature or humidity.

This can usually be resolved by mopping the floor with clean water (no detergent) and allowing it to dry naturally.

If the static persists, we recommend cleaning the floor with an ESD cleaner according to the manufacturer's instructions and our guidelines above regarding routine maintenance.

If you have any concerns about cleaning your floor, you can contact us here:  
**+44 (0)1582 310 705 or [info@gftcompany.com](mailto:info@gftcompany.com)**

## RECOMMENDED CLEANING & SEALING PRODUCTS

Ecotile recommend the following cleaners and sealers, other manufacturer's products may also be suitable.

- + Initial Clean or Heavy Duty Clean - **Dr Schutz Heavy Duty Degreaser**
- + General Day to Day Cleaning - **Dr Schutz R1000 Floor Cleaner**
- + Floor Preparation Prior to Sealing or Polishing - **Dr Schutz Clean & Strip**
- + General Purpose PU Floor Sealer - **Dr Schutz PU Sealer**
- + Stain Prevention & Protection - **Dr Schutz PU Anticolor Sealer**
- + Static Prevention - **Statguard ESD Floor Cleaner**