



# HF-Matchbox Blue

## HF-M BLUE 124 SH TL/TL5/PL-L 230-240V

HF-Matchbox Blue is an affordable, reliable, compact, lightweight and high-frequency ballast for use with system wattages below 25 W in combination with TL mini, TL-D, TL5 and TL5c, PL-T/C, and PL-L/S lamps. The HF-M Blue range has a robust design, meets all relevant international safety and performance standards and has an energy efficiency index (CELMA EEI ) of A2.

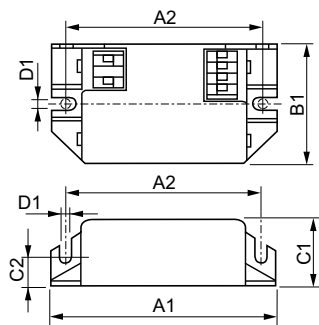
### Product data

Operating and electrical	
Input Voltage	230 to 240 V
Line Frequency	50 to 60 Hz
Input frequency	50 to 60 Hz
Number of products on MCB (16 A type B) (nom.)	60
Wiring	
Connector type input terminals	Insert
Colour input terminals	Orange
Colour output terminals	Grey
Connector type output terminals	Insert
Cable length from device to lamp	1.50 m
Temperature	
Ambient temperature range	-10 °C to 40 °C
T-Case maximum (max.)	75 °C
Mechanical and housing	
Housing	SH

Approval and application	
Ingress protection code	IP20 [Finger-protected]
Approval marks	F-Marking CE marking VDE certificate CB Certificate
Product data	
Full EOC	871150053638930
Order product name	HF-M BLUE 124 SH TL/TL5/PL-L 230-240V
Order code	53638930
Local order code	HFMBLUE124SH
SAP numerator – quantity per pack	1
Numerator – packs per outer box	50
Material number (12NC)	913700417966
Full product name	HF-M BLUE 124 SH TL/TL5/PL-L 230-240V
EAN/UPC - Case	8711500536396

# HF-Matchbox Blue

## Dimensional drawing



A2

### Product

HF-M BLUE 124 SH TL/TL5/PL-L 230-240V

Product	A1	A2	B1	C1	D1
HF-M BLUE 124 SH TL/TL5/PL-L 230-240V	94 mm	84 mm	40 mm	22 mm	4.4 mm

