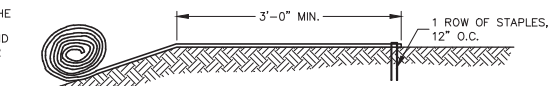
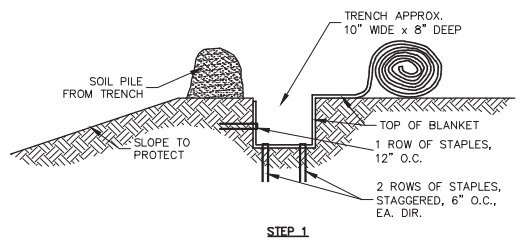


**SLOPE DETAIL**  
NO SCALE

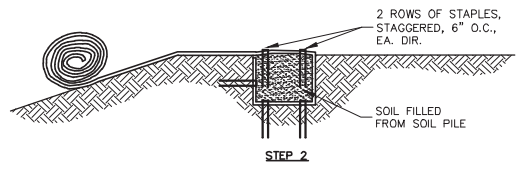


**OVER SLOPE CREST METHOD**  
NO SCALE

DO NOT NEED TO TRENCH BLANKET IN IF IT CAN BE EXTENDED A MINIMUM OF 3'-0" OVER THE CREST OF THE SLOPE.

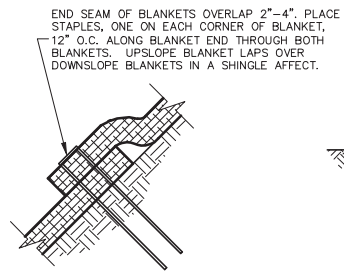


STEP 1

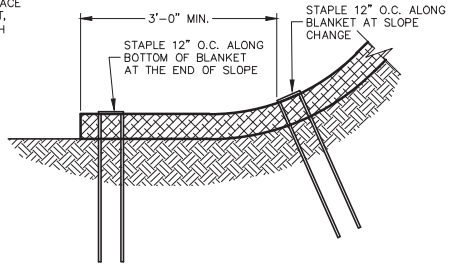


STEP 2

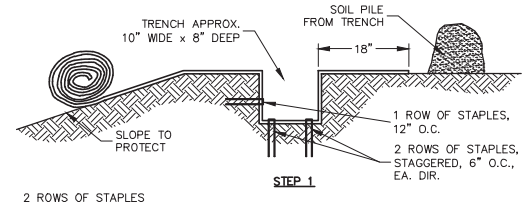
**SLOPE TRENCHING METHOD "A"**  
NO SCALE



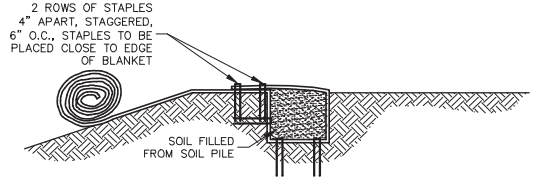
**END ROLL OVERLAP**  
NO SCALE



**BOTTOM OF SLOPE TERMINATION**  
NO SCALE



STEP 1



STEP 2

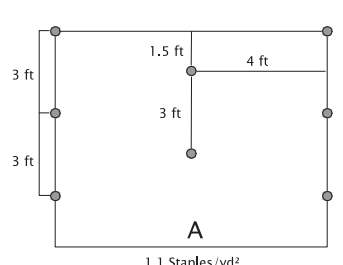
**SLOPE TRENCHING METHOD "B"**  
NO SCALE

**AEC Premier Coconut™ Staple Pattern Guide**

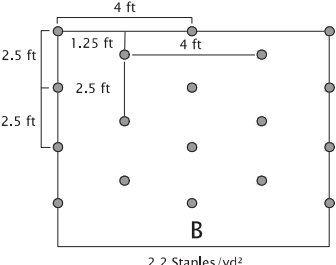
For 8 ft wide AEC Premier Coconut Erosion Control Blankets

Application	Slope	
	≤ 3H:1V	≤ 1H:1V
Staple Pattern	A	B

● = Staple Placement



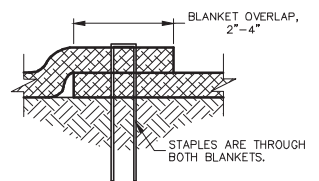
1.1 Staples/yd²



2.2 Staples/yd²

Notes:

1. Recommended staples are minimum 4 in biodegradable E-Staple®, as provided by American Excelsior Company, or 6 in wire for cohesive soils and 6 in biodegradable E-staple®, as provided by American Excelsior Company, or 5 in wire for non-cohesive soils.
2. For best results insert staples so heads are parallel to the flow of water.



**SIDE SEAM OVERLAP STAPLE DETAIL**  
NO SCALE