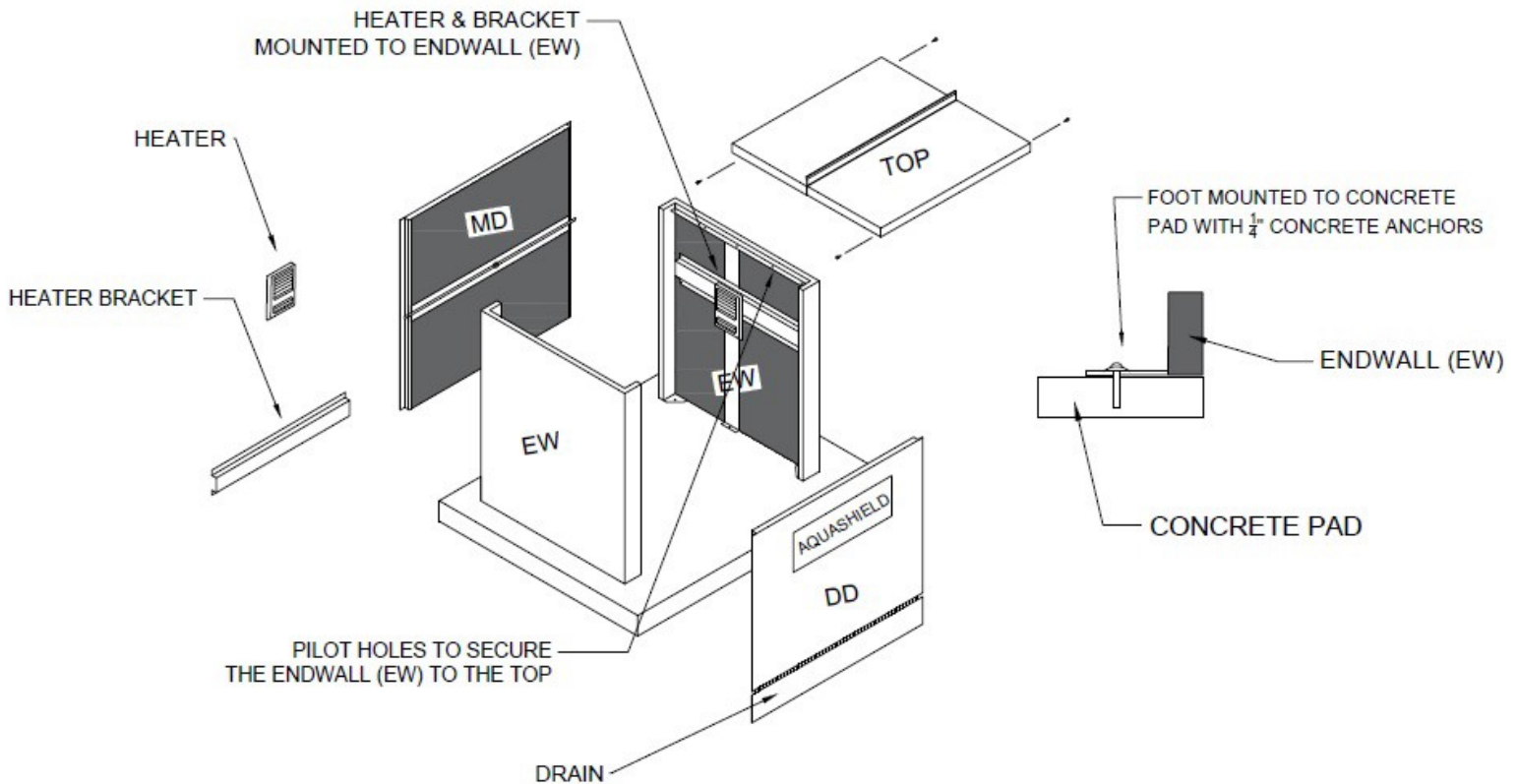


AquaSHIELD®

PROTECTIVE ENCLOSURES

INSTALLATION INSTRUCTIONS SERIES: NBF



ENCLOSURE ASSEMBLY INSTRUCTIONS

1. Provide a concrete mounting pad according to the "Mounting Pad Preparation" sheet. Using the BFP as centerline, mark the outside dimensions of the enclosure on the concrete pad.
2. Set end wall panels on marked pad as shown.
3. Set roof panel (A) on side walls at opposite end of (#1) test cock. Secure with self-tapping screws on the inside of the enclosure through wall angle and underneath side of top. Set roof panel (B) with standing seam overlapping flange of (A) panel. (FIG1) Secure to side walls as before. **Note: Roof panel (B) must be located over #1 Test Cock for removal during testing.**
4. **To insure proper fit of access doors, verify that the side access openings have the same dimensions across the top and bottom and the walls are plumb.** Fasten enclosure to concrete pad through the holes provided in the corner mounting tabs attached to the walls.
5. If heater is provided, attach heater to "heater mounting bracket" by using self-tapping screws through the back of the heater box (FIG. 2). **Note: Install ground-fault circuit breaker and follow all governing electrical codes.**
6. Remove the protective plastic film from the enclosure. **Note: Failure to remove the plastic will cause damage to the exterior finish of the enclosure.**
7. Set access panels in place and lock.