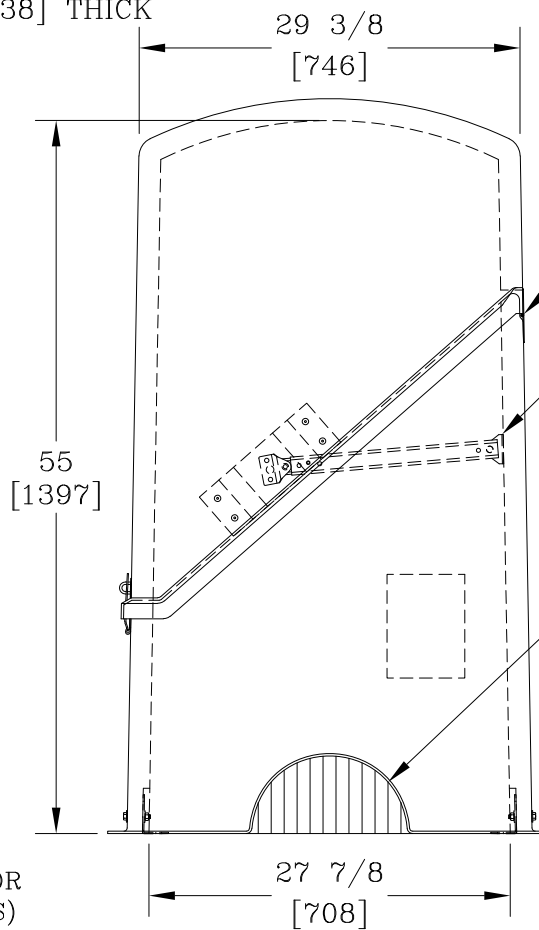


INSULATION:
1 1/2 [38] THICK



HASP & STAPLE

CONTINUOUS HINGE LOCATION

LID PROP 2 PLACES


DRAIN PORT (1 CENTERED EACH END)

DOUBLE ANCHOR PAD (4 PLACES)

NOTES:

- HEAT IS NOT PROVIDED WITH THIS ENCLOSURE.
- ENCLOSURE COLOR IS BEIGE.
- FOR RECOMMENDED SLAB SIZE ADD 9" [229] TO THE ENCLOSURE EXTERIOR.

DIMENSIONS ARE IN INCHES OR MILLIMETERS IN BRACKETS UNLESS OTHERWISE NOTED.

DRN	BY	DATE	WEIGHT	 3621 INDUSTRIAL PARK DR LENOIR CITY, TN 37771 800-346-3062 www.hot-box.com	LOC
CHK			204# 94kg		LC
ENG			SCALE	DRAWING DESCRIPTION HOT BOX® FIBERGLASS FLIPTOP ENCLOSURE B3E	REV
APR			NTS		A
APR			SIZE		12/19
PROJECT NUMBER			B		DRAWING NUMBER
					LF026070055
SHEET 1 OF 1					