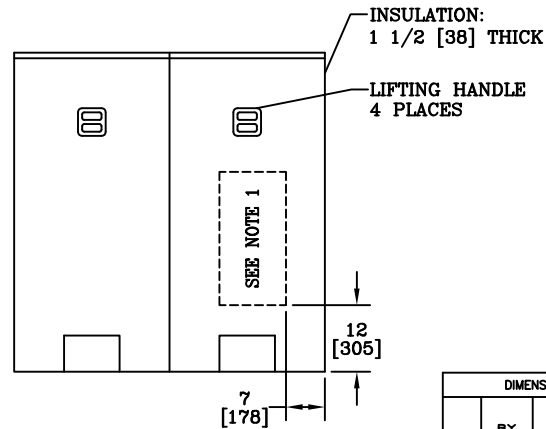
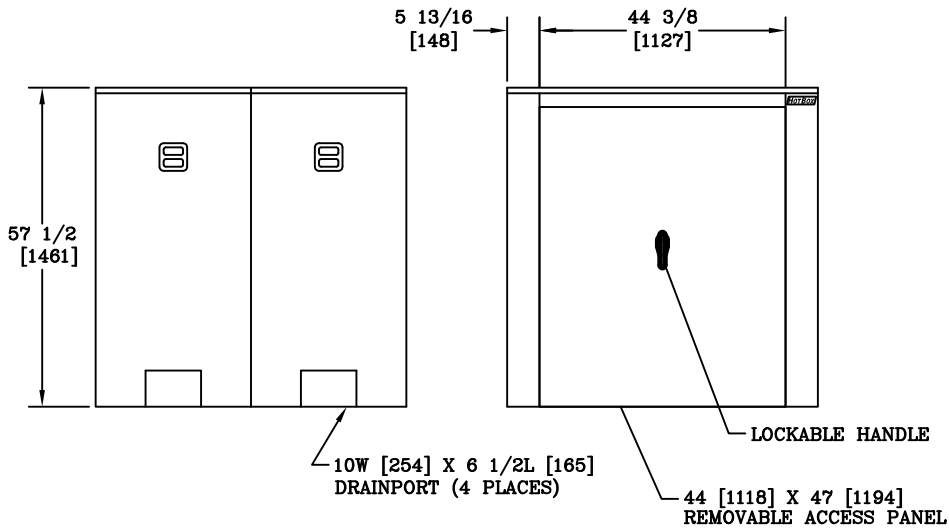


VIEW A-A



NOTES:

- HEAT IS PROVIDED BY A 1500WATT, 120V SINGLE PHASE HEATER. FOR UNHEATED VERSION REPLACE THE PREFIX "H" WITH AN "L".
- INTERNAL DIMENSIONS: 53 [1346]W X 53 [1346]L X 56 [1422]H
- FOR RECOMMENDED SLAB SIZE ADD 9" [229] TO THE ENCLOSURE EXTERIOR.
- OLD P/N: HB8FE-AL

DIMENSIONS ARE IN INCHES OR MILLIMETERS IN BRACKETS UNLESS OTHERWISE NOTED.				HUBBELL		LOC
DRN	BY	DATE	WEIGHT	3621 INDUSTRIAL PARK DR		LC
CHK	KCP	9/24/09	444#	LENOIR CITY, TN 37771		S
ENG			201kg	865-986-9726		REV
APR			SCALE	www.quozite.com		A
APR			1/2"=1'	DRAWING DESCRIPTION		9/08
PROJECT NUMBER			SIZE	HOT BOX® (2 SECTION) ALUMINUM ENCLOSURE		
09938			B			
SHEET 1 OF 1				DRAWING NUMBER		
				HA053053056		