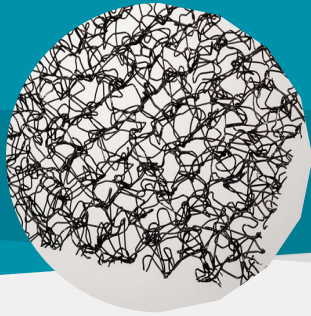


## Enkamat<sup>®</sup> 7010

### Turf Reinforcement Mat



**Description** **Enkamat 7010** is a 3-dimensional turf reinforcement mat (TRM) made of continuous monofilaments fused at their intersections. 95% percent of the Enkamat is open and available for soil, mulch and root interaction, creating the most effective root reinforcement mat (R2M) available. Enkamat is manufactured from nylon to eliminate the buoyancy factor associated with submerged conditions. It provides permanent TRM protection in vegetated channels, as well as on slopes.

- Recommended Applications**
- Permanent erosion control for vegetated channels with expected shear stresses **≤ 8 psf**
  - Permanent erosion control for moderate to steep slopes (**≤1H:1V**)
  - Support and enhance performance of ecosystem plants
  - Substrate for hydraulically applied Flexible Growth Medium (FGM) or Bonded Fiber Matrix (BFM)
  - Meets requirements of **FHWA FP03 Type 5B TRM**
  - Material **Specific Gravity of > 1.14** prevents buoyancy— the No Float TRM.

#### Technical Data

##### Mechanical Properties

	Test Method	Units	MARV Roll Value
Tensile Strength	ASTM D 6818	kN/m (lbs/ft)	1.8 (125)
Thickness	ASTM D 6525	mm (in)	6.25 (0.25)
Mass/Unit Area	ASTM D 6566	g/m <sup>2</sup> (oz/yd <sup>2</sup> )	150 (4.5)
Resiliency	ASTM D 6524	%	> 80
UV Stability	ASTM D 4355	% strength retained	80 @ 2000 hr

##### Performance Properties

	Test Method	Units	Typical Roll Value
<b>Permissible Velocity</b>	60 minute, vegetated	Flume test	m/s (ft/s) 5.8 (19)
	50 hour, vegetated	Flume test	m/s (ft/s) 4.2 (17)
<b>Permissible Shear Stress</b>	60 minute, vegetated	Flume test	kN/m (lbs/ft) 0.38 (8.0)
	50 hour, vegetated	Flume test	kN/m (lbs/ft) 0.29 (6.0)
Manning's "n" Range	Flume test		0.022— 0.042

##### Packaging

Property	Units	Nominal Value
Roll Dimensions [ w x l ]	m (ft)	2.4 X 51.4 (8.0 X 169)
Roll Area	m <sup>2</sup> (yd <sup>2</sup> )	125.4 (150)
Estimated Roll Diameter	m (in)	0.61-0.71 (24-28)
Estimated Roll Weight	kg (lb)	34 (75)
Color		Black

To the best of our knowledge, the information contained herein is accurate. However, Low & Bonar Inc. cannot assume any liability whatsoever for the accuracy or completeness thereof. Final determination of the suitability of any information or material for the use contemplated, of its manner of use and whether the suggested use infringes any patents is the sole responsibility of the user. These products may be covered by patents or patents pending.