
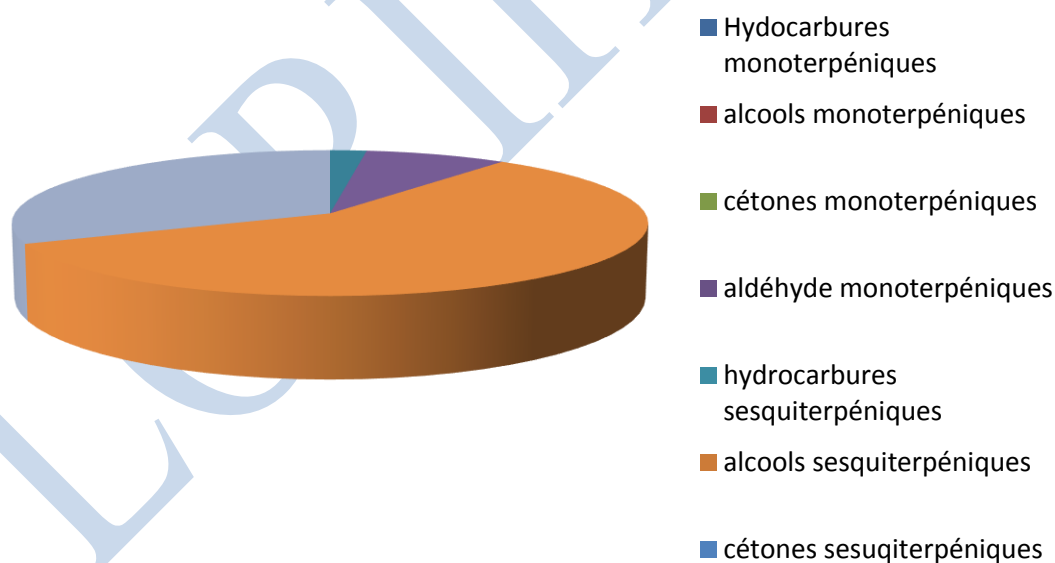


|   |  |  |                     |
|---|--|--|---------------------|
| <br><b>JE INTERNATIONAL</b> | <b>ENREGISTREMENT DES BULLETINS<br/>ANALYTIQUES : CHROMATOGRAPHIE<br/>ESSENTIAL OIL CHROMATOGRAPHY SHEET<br/>RECORDS</b> | <b>FORM-LAB005-B</b>   | <b>Page 1 sur 4</b> |
|   |  | <b>Date d'entrée en vigueur / taking<br/>effect : 10/06/2011</b> |                     |

Date : 20/12/2012  
 Huile essentielle de / Essential oil of : Pin Douglas / Douglas Fir  
 Numéro de lot / Lot Number : FLE029H201212F  
 Densité à 20°C (g/cm<sup>3</sup>) / Density to 20°C (g/cm<sup>3</sup>) : N.D.  
 Indice de réfraction / Refractive index : N.D.  
 Pouvoir rotatoire à 20°C / Optical rotation to 20°C : N.D.  
 Mode de culture / Culture mode : Sauvage / Wild  
 Pays / Country : France  
 Année de production / Production year : 2012  
 Mode d'extraction / Extraction mode : Distillation à la vapeur / Steam distillation  
 % Bio / % Organic : 100% Bio / 100% Organic  
 Nom Latin / Latin Name : Pseudotsuga menziesii  
 Parties utilisées / Used Parts : aiguilles/needles  
 D.L.U : 11/2017




| Molécule                | %      |
|-------------------------|--------|
| tricyclene              | 0.095  |
| alpha-thujene           | 1.750  |
| alpha-pinene            | 14.217 |
| camphene                | 0.842  |
| thuja-2.4(10)-diène     | 0.089  |
| sabinene                | 8.534  |
| beta-pinene             | 28.170 |
| myrcene                 | 1.085  |
| alpha-phellandrene      | 0.309  |
| delta-3-carene          | 7.520  |
| alpha-terpinene         | 1.664  |
| para-cymene             | 5.587  |
| <b>Limonene*</b>        | 2.703  |
| beta-phellandrene       | 0.803  |
| trans beta ocimene      | 0.080  |
| cis-beta-ocimene        | 0.165  |
| gamma terpinene         | 2.622  |
| terpinolene             | 6.236  |
| para-cymenene           | 0.737  |
| <b>linalol *</b>        | 0.245  |
| cis-para-menth-ene-2-ol | 0.072  |

|  |  |  |                     |
|--|--|--|---------------------|
|  Florihana | <b>ENREGISTREMENT DES BULLETINS<br/>ANALYTIQUES : CHROMATOGRAPHIE<br/>ESSENTIAL OIL CHROMATOGRAPHY SHEET<br/>RECORDS</b> | <b>FORM-LAB005-B</b>   | <b>Page 3 sur 4</b> |
| <b>JE INTERNATIONAL</b>  |  | <b>Date d'entrée en vigueur / taking<br/>effect : 10/06/2011</b> |                     |

| <b>Molécule</b>                     | <b>%</b> |
|-------------------------------------|----------|
| trans-para-menth-ene-2-ol           | 0.529    |
| citronnellal                        | 0.043    |
| terpinene-4-ol                      | 5.46     |
| salicylate de methyle               | 1.706    |
| alpha-terpineol                     | 1.226    |
| <b>citronelloi *</b>                | 0.557    |
| thymol methyl ether                 | 0.117    |
| acetate de bornyle                  | 0.264    |
| delta-elemene                       | 0.065    |
| acetate de citronnellyle            | 1.492    |
| acetate de geranyle + alpha-copaene | 0.396    |
| beta-elemene                        | 0.094    |
| decanoate d'ethyle                  | 0.047    |
| longifolene                         | 0.119    |
| beta-caryophyllene                  | 0.080    |
| alpha humulene                      | 0.135    |
| delta-selinene                      | 0.030    |
| gamma-muurolene                     | 0.053    |
| bicyclogermacrene                   | 0.078    |
| gamma-cadinene                      | 0.089    |
| cadina-1,4-diene                    | 0.030    |



|  |  |                      |                     |
|--|--|----------------------|---------------------|
|  | <b>ENREGISTREMENT DES BULLETINS<br/>ANALYTIQUES : CHROMATOGRAPHIE<br/>ESSENTIAL OIL CHROMATOGRAPHY SHEET<br/>RECORDS</b> | <b>FORM-LAB005-B</b> | <b>Page 4 sur 4</b> |
| <b>JE INTERNATIONAL</b>  | <b>Date d'entrée en vigueur / taking<br/>effect : 10/06/2011</b>   |                      |                     |

| Molécule | %      |
|----------|--------|
| Total    | 96.135 |

- \* = Substance(s) allergène(s) / allergen(s)
- \*\* = Substance(s) classée(s) CMR / Substance(s) classified as CMR

FLORIHANA

