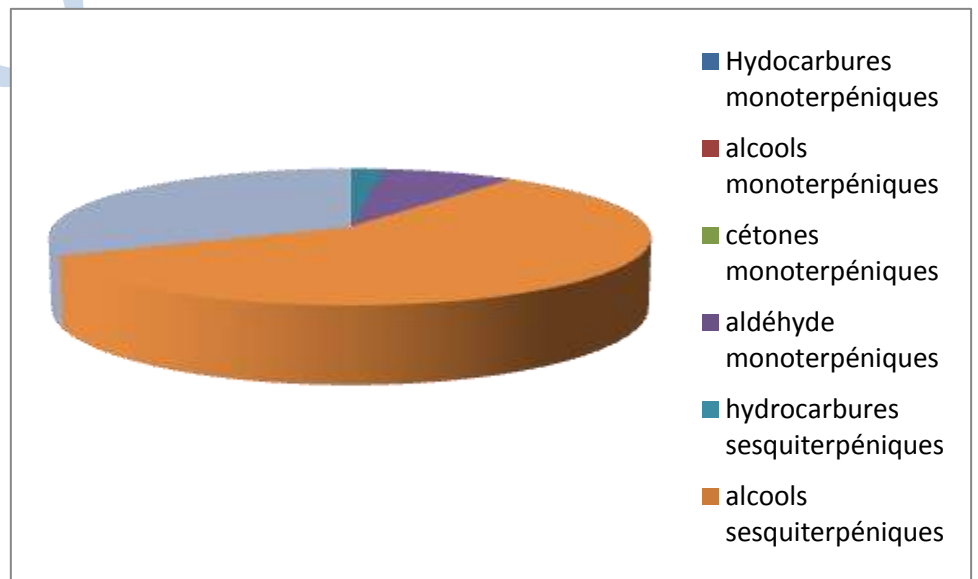


Date	:	19/06/2012
Huile essentielle de / Essential oil of	:	Pin Douglas / Douglas Fir
Numéro de lot / Lot Number	:	FLE029B150612F
Densité à 20°C (g/cm ³) / Density to 20°C (g/cm ³)	:	N.D.
Indice de réfraction / Refractive index	:	N.D.
Pouvoir rotatoire à 20°C / Optical rotation to 20°C	:	N.D.
Mode de culture / Culture mode	:	Sauvage / Wild
Pays / Country	:	France
Année de production / Production year	:	2010
Mode d'extraction / Extraction mode	:	Distillation à la vapeur / Steam distillation
% Bio / % Organic	:	100% Bio / 100% Organic
Nom Latin / Latin Name	:	Pseudotsuga menziesii
Parties utilisées / Used Parts	:	aiguilles/needles



Molécule	%
tricyclene	0.095
alpha-thujene	1.750
alpha-pinene	14.217
camphene	0.842
thuja-2.4(10)-diène	0.089
sabinene	8.534
beta-pinene	28.170
myrcene	1.085
alpha-phellandrene	0.309
delta-3-carene	7.520
alpha-terpinene	1.664
para-cymene	5.587
Limonene*	2.703
beta-phellandrene	0.803
trans beta ocimene	0.080
cis-beta-ocimene	0.165
gamma terpinene	2.622
terpinolene	6.236
para-cymenene	0.737
linalol *	0.245
cis-para-menth-ene-2-ol	0.072

Molécule	%
trans-para-menth-ene-2-ol	0.529
citronnellal	0.043
terpinene-4-ol	5.46
salicylate de methyle	1.706
alpha-terpineol	1.226
citronelloi *	0.557
thymol methyl ether	0.117
acetate de bornyle	0.264
delta-elemene	0.065
acetate de citronnellyle	1.492
acetate de geranyle + alpha-copaene	0.396
beta-elemene	0.094
decanoate d'ethyle	0.047
longifolene	0.119
beta-caryophyllene	0.080
alpha humulene	0.135
delta-selinene	0.030
gamma-muurolene	0.053
bicyclogermacrene	0.078
gamma-cadinene	0.089
cadina-1,4-diene	0.030

Molécule	%
Total	96.135

- * = Substance(s) allergène(s) / allergen(s)
- ** = Substance(s) classée(s) CMR / Substance(s) classified as CMR

FLORIHANA

