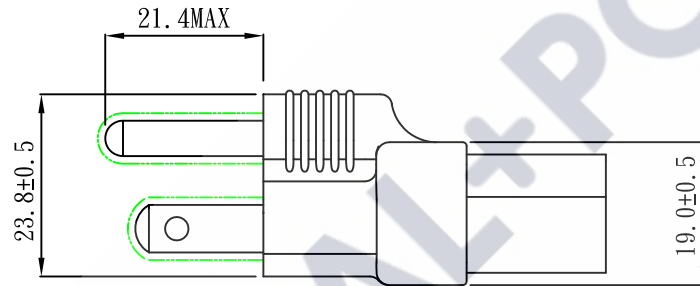
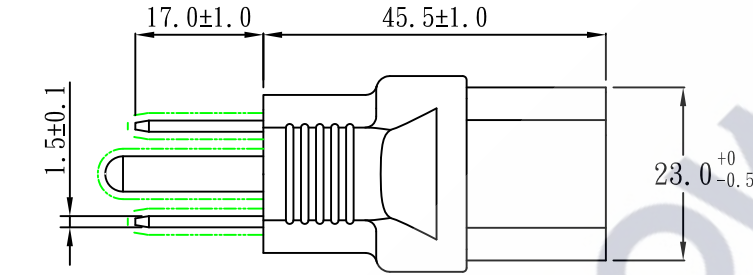
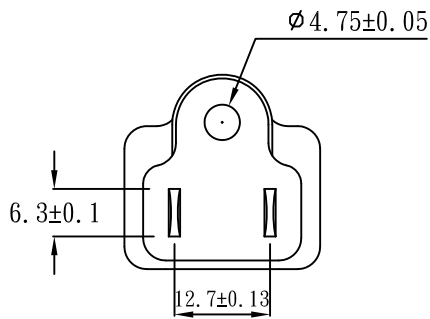


We reserve the right to alter Non-Critical dimensions or updated the UL standard of lastest version without notice.

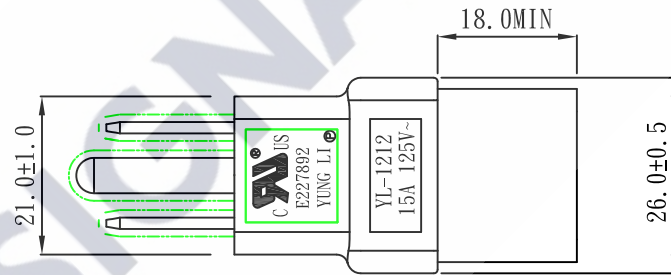
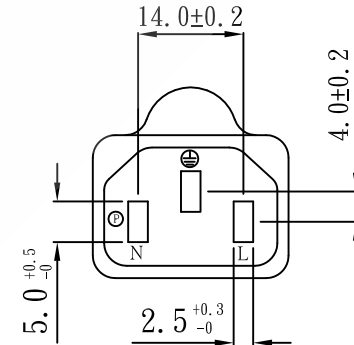


NEMA 5-15P+IEC60320 C13



Note:

1. Rating:15A 125V
2. Insulation Resistance:100MΩ
3. Dielectric Voltage:2000V/sec



60MM

CAUTION: This plug adapter does NOT transform voltage or current. Verify that your device can safely operate at the voltage supplied by the source before connecting. Assure voltage and current are less than or equal to the rating listed on the adapter. Voltage mismatch can cause damage to your device or even bodily harm.

60MM

Tolerance >0±0.30 >1.0±0.50 >10.0±1.0 >20.0±2.0 Angle: ±1°	Approved		Date		SIGNAL+POWER			
	Checked		Date					
	Drawn	Melon	Date	24.07.05	Customer			
	Cat. No.	YL-1212			P/N.			
	Drawing No.	VI-A1212-03	Rev.	B	Material	P. V. C	Unit	mm
				Scale				