



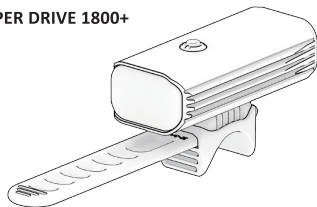
Scan to see features and videos



Download **Lezyne LED Ally** to pair lights & customize modes

READ ENTIRE MANUAL BEFORE OPERATION to ensure proper use and care of your new Lezyne LED light. Traffic laws mandating lighting vary from country to country. Inform yourself about lighting laws and regulations in the country of use. Lezyne LED lights do not conform to the German road traffic regulation StVZO.

**SUPER DRIVE 1800+**



**Warnings**

DO NOT LOOK DIRECTLY INTO LIGHT BEAM or shine into eyes of another.

Lezyne LED Lights have a water resistance rating of IPX7 under IEC standard 60529. Submerging the device is not recommended. If moisture does enter the casing, air out until completely dry.

DO NOT ATTEMPT TO REMOVE ELECTRONICS. Doing so will void warranty.

Lezyne USA, Inc. does not accept any liability for injuries or other damages resulting from the use of this product in any circumstances.

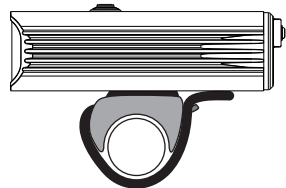
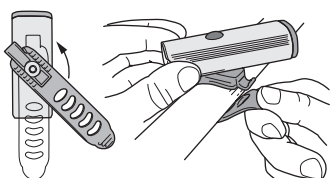
**Warranty**

In U.S. and U.K., Lezyne LED Lights carry a two (2) year warranty from the original purchase date to the original owner (proof of purchase required). Lezyne Batteries carry a six (6) month warranty from the original purchase date. Lezyne warranties cover any manufacturing defects in materials or workmanship. Issues not covered by warranty include normal wear & tear, improper installation, attempting to access or modify electronics, damage or failure due to accident, misuse, abuse and/or neglect.

For all warranty issues worldwide, please contact the retailer that sold the product.

For any warranty questions contact: [warranty@lezyne.com](mailto:warranty@lezyne.com)

**Mounting**



**Operation**

1. On/Off: hold button two (2) seconds.
2. Mode cycle: click button

**RACE MODE:** With the light OFF, hold button for five (5) seconds, until light flashes. The light is now in Race Mode where only Overdrive and Enduro outputs are selectable. The light will remain in Overdrive Race Mode even when switched OFF. Repeat the step above to return to the normal mode set.

**MODE MEMORY:** The light remains in the output setting it is switched OFF in.

**THERMAL PROTECTION:** If the operating temperature of the light is too high, the light automatically lowers the lumen output.

**Run Times and Modes**

All light modes are available when using the Infinite Light Power Pack+ and XL+. However, when the light's internal battery is low, certain light modes will be limited for battery safety reasons.

	ECONOMY	ENDURO	BLAST	OVER DRIVE	DAY FLASH	FEMTO	PULSE
	350 LUMENS	500 LUMENS	1100 LUMENS	1800 LUMENS	750 LUMENS	20 LUMENS	200 LUMENS
	9:00 h:min	6:00 h:min	2:45 h:min	1:45 h:min	21:00 h:min	180:00 h:min	45:00 h:min
Power Pack+ Normal USB mode	⚡	⚡	⚡	⚡	⚡	⚡	⚡
Power Pack+ Low battery USB mode	⚡	⚡			⚡	⚡	⚡

RACE MODE

**OVERDRIVE MODE:** A great use for this is when alternating between steep climbs and descents. While climbing, you'll be traveling at a much slower speed, so it's a great time to conserve battery with the lower setting. When you reach the top and start to descend at a higher speed, you can hit the button once, and switch to the highest output of the light without having to search through all the flashing modes.

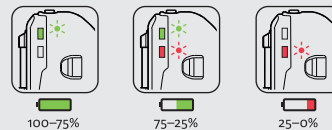
**DAY FLASH MODE:** Specifically flashing is the single most effective way to make yourself more visible.

**Packaging include**

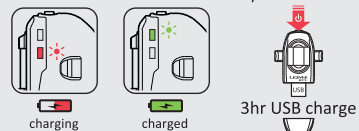
	Mounting Strap	KTV Pro Smart Rear	GoPro Adapter	Handle Bar Mount
<b>SUPER DRIVE 1800+</b>	●			
<b>SUPER DRIVE 1800+ LOADED</b>	●	●	●	● (CM)

**KTV Drive Pro Smart Rear Instruction (Super loaded ONLY)**

**BATTERY**



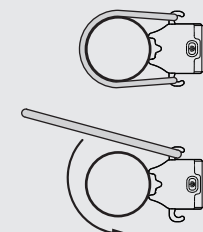
**CHARGING**



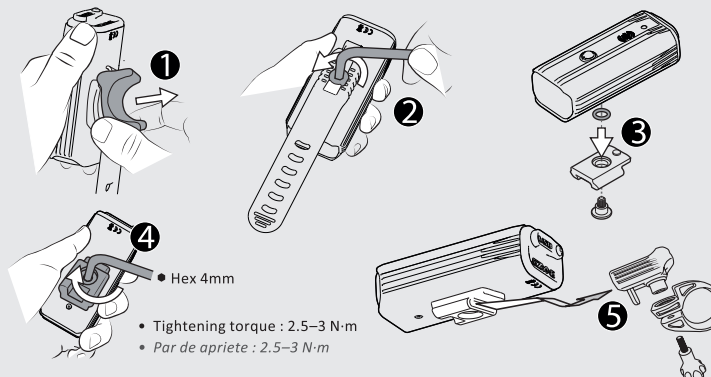
**RUN TIMES AND MODE**

	DAY FLASH	FLASH 1	FLASH 2	PULSE	BLAST	ECONOMY
	75 LUMENS	25 LUMENS	10 LUMENS	25 LUMENS	20 LUMENS	3 LUMENS
	10:00 h:min	8:45 h:min	19:30 h:min	8:45 h:min	4:00 h:min	18:00 h:min

**MOUNTING**

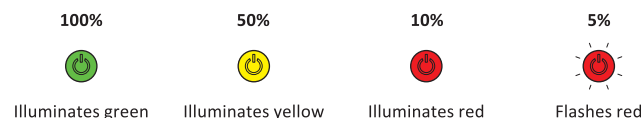


**Handlebar Mount Instruction (Super loaded ONLY)**



**Battery Indicator**

An LED, located in the button, displays current battery status while light is ON. When light is OFF, click button once to momentarily display battery status.



**Charging**

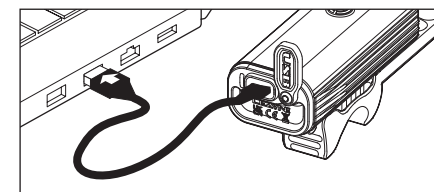
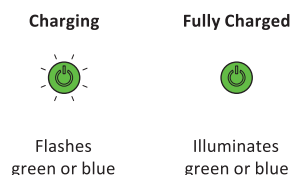
Before using your Lezyne LED Light for the first time, fully charge the battery. To charge your light:

1. Switch light OFF
2. Remove USB-C protective cover
3. Connect USB-C cable and light to powered USB-C port
4. Once charging, button will flash green; if USB-C port is capable, light will use High Efficiency (HE) charging and button will flash blue

If button does not flash when plugged in, selected USB-C port may not be powered—try another USB-C port.

Light will be charged after 6–8 hours (4–6 with HE charging) or when button illuminates solid green or blue.

5. Remove light from charger and reinstall USB-C protective cover—ensure USB-C protective cover is fully installed for water resistance



- Please read all instructions before use
- Lea todas las instrucciones antes de usar
- Veuillez lire les instructions avant utilisation
- Bitte lesen Sie vor dem ersten Gebrauch alle Anweisungen durch
- ご使用前に必ず取扱説明書をご覧ください。