

Includes

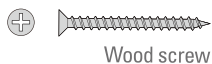


Pedal Hook



Tire Block

x 2



Wood screw

x 6



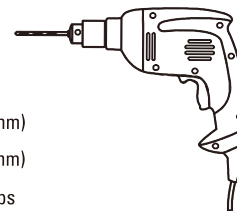
Drywall Anchor

x 4



stainless

Tools

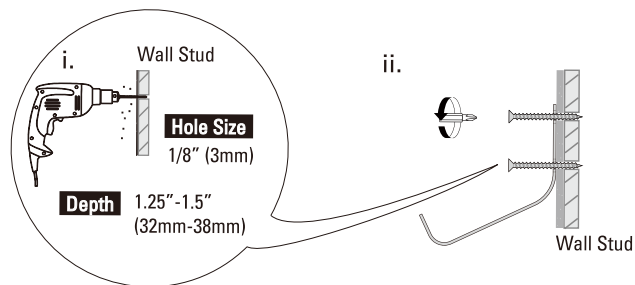


1/8" (3mm)

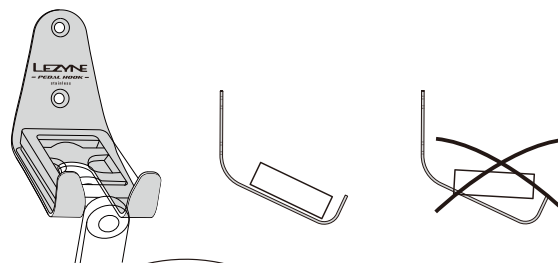
1/4" (6mm)

#2 Philips

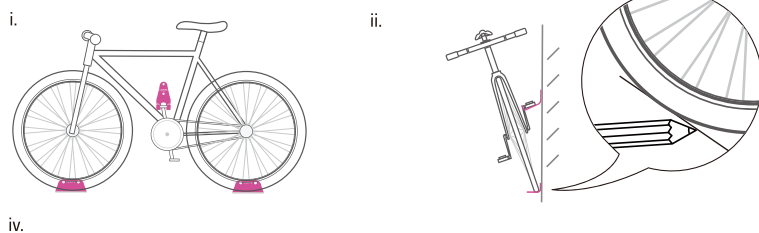
1.



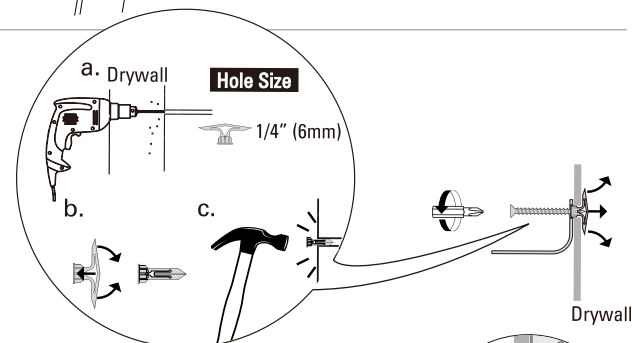
2.



3.



iii.

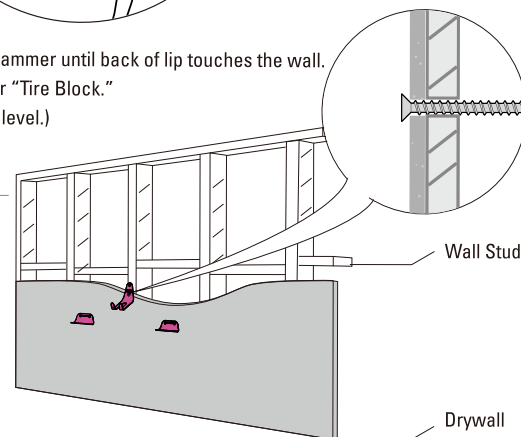


iv.



- A. Place pedal into pedal hook.
- B. Align tire with "Tire Block" and mark the drill location.

- C. * Drill pilot holes.
** Collapse the drywall anchor.
*** Tap the drywall anchors with hammer until back of lip touches the wall.
- D. Repeat step 3-ii & 3-iii for the other "Tire Block."
(Make sure both "Tire Blocks" are level.)



- Please consult a professional if there are any installation questions or issues
- Please check fitment manual at the bottom of box prior to installation
- Max Weight: 70lbs (32kgs)
- Recommended Weight: 50lbs (23kgs) or below